

Accessories

Electrical

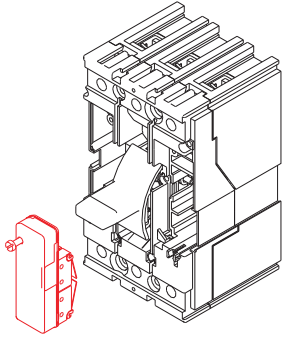
T1-T6

Acc.

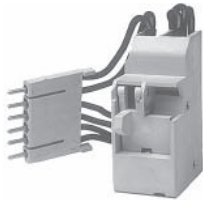
Auxiliary Contacts - AUX ⁽¹⁾

Auxiliary contacts are for indication of the circuit breaker open-closed. Bell alarm contacts (BA) can be used to indicate circuit breaker tripped.

Frame Size		Factory Installation		Field Installation	
		Part Number Suffix	List Price Adder	Part Number	List Price
T1-T2-T3 ⁽²⁾	1 AUX "C" + 1 BA "C" 250VAC/DC	A		KT3AS	
	3 AUX "C" + 1 BA "C" 250VAC/DC	A3		KT3AS3	
T2 ⁽³⁾	2 AUX "C" + 1 BA "C" PR221DS	AE		KT2AS-E	
	1 AUX "C" + 1 BA "C" + 1S51 "C" PR221DS	AE2		KT2AS-E2	
Ts3	2 AUX "C" 250VAC/DC	A		KTs3AS	
	1 AUX "C" + 1 BA "C" 250VAC/DC	BA		KTs3BA	
T4-T5-T6	1 AUX "C" + 1 BA "C" 250VAC/DC	A		KT6AS	
	2 AUX "C" 400VAC	A2		KT6AS2	
	3 AUX "C" + 1 BA "C" 250VAC/DC	A3		KT6AS3	
	3 AUX "C" + 1 BA "C" 24VDC	A3L		KT6AS3L	



T1 with K3TAS



KT3AS

Auxiliary Contact Connector (Required for Ts3) ⁽⁴⁾

Ts3	Fixed Plug-In /Drawout	Not required for factory install	C-AB	
		Not required for factory installed	KTs3C-ABP	

⁽¹⁾ Add suffix to circuit breaker part number. See p.4 for more details.

⁽²⁾ Not compatible for T2 with PR221DS trip unit.

⁽³⁾ For installation on T2 with PR221DS electronic trip unit

⁽⁴⁾ Must be ordered separately for field installation.