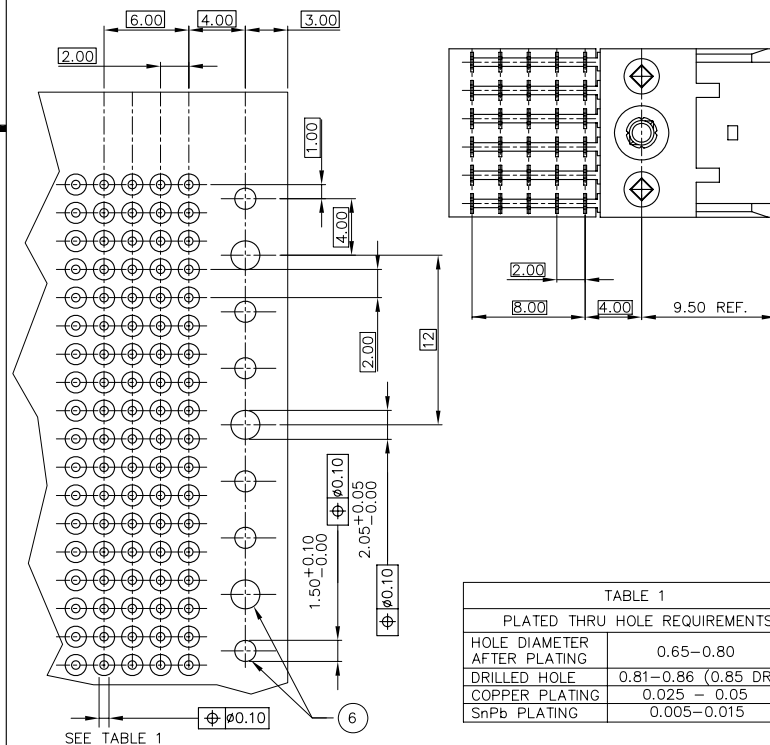
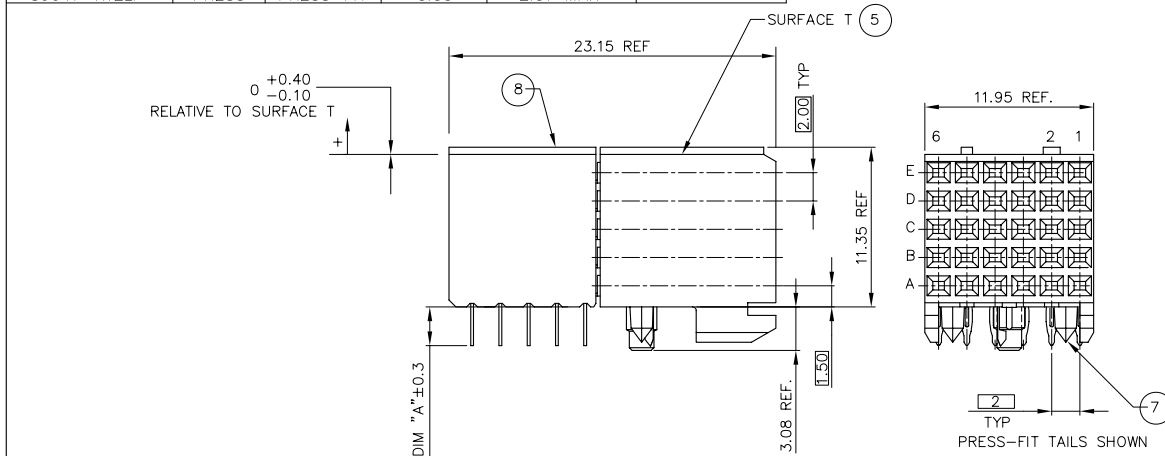


PRODUCT NUMBER	PEG TYPE	TAIL TYPE	TAIL LGTH. DIM "A"	PCB THICKNESS±0.20	LOADING CONFIGURATION
89047-X02	PRESS	PRESS-FIT	2.73	2.57 MAX	FULLY LOADED
89047-X12	PRESS	PRESS-FIT	3.53	2.57 MAX	
89047-X02LF	PRESS	PRESS-FIT	2.73	2.57 MAX	FULLY LOADED
89047-X12LF	PRESS	PRESS-FIT	3.53	2.57 MAX	

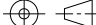
PRODUCT NR:	PLATING CONTACT AREA:	UNDERPLATING
89047-1YY	0.8 µm GOLD	1.3 µm Ni MIN.
89047-2YY	2.0 µm GOLD	1.3 µm Ni MIN.
89047-3YY	1.3 µm GOLD	1.3 µm Ni MIN.
89047-9YY	0.8 µm GXT	1.3 µm Ni MIN.
89047-1YYLF	0.8 µm GOLD	1.3 µm Ni MIN.
89047-2YYLF	2.0 µm GOLD	1.3 µm Ni MIN.
89047-3YYLF	1.3 µm GOLD	1.3 µm Ni MIN.
89047-9YYLF	0.8 µm GXT	1.3 µm Ni MIN.



RECOMMENDED PC BOARD LAYOUT, COMPONENT SIDE.  
(SEE PRINT 58351 FOR ADDITIONAL PCB INFORMATION)

#### NOTES:

- CONNECTOR MATERIALS:  
HOUSING: ~~LCp 430% COMPLAINT~~  
TERMINAL: PHOSPHOR BRONZE ALLOY
- TAIL PLATING:  
89047-XYX = 0.5-1.5µm Sn Pb  
89047-XYXLF = 0.5-1.5µm Sn (LEAD FREE)
- PRODUCT SPECIFICATION:  
GS-12-002
- APPLICATION SPECIFICATIONS:  
BUS-20-060  
GS-20-001  
TA-941
- PRODUCT MARKING: (PART NUMBER & LOT CODE).
- INDICATED HOLES ARE UNPLATED.
- LOCATION PEG FEATURES MAY NOT BE AVAILABLE AS SHOWN FOR ASSYS W/ PRESS PEGS.
- TOP SURFACE OF PRESS BLOCK MAY EXTEND UP TO 0.4MM HIGHER THAN HOUSING. THIS MAY AFFECT THE TAIL LENGTH BEFORE APPLICATION TO A BOARD.
- THESE PRODUCTS WHERE THE PART NUMBER ENDS IN "LF" MEET THE EUROPEAN UNION DIRECTIVES AND OTHER COUNTRY REGULATIONS AS DESCRIBED IN GS-22-008.  
ALL PRODUCTS WILL WITHSTAND EXPOSURE TO 240°C FOR 60 SECONDS IN A CONVECTION, INFRARED OR VAPOR PHASE REFLOW OVEN.
- FOR LEAD FREE PART NUMBERS ADD "LF" SUFFIX. EXAMPLE: 89047-XYXLF.

mat'l. code				tolerances unless otherwise specified				CUSTOMER COPY		A FCI		www.fciconnect.com	
NOTE 1													
ltr	ecn no	dr	date	linear	0.X±0.3				projection	title			
J	V20668	CGD	4/16/02		0.XX±0.13					B SERIES R/A SIGNAL RECEPT ASSY			
K	V21076	CGD	6/18/02		0.XXX±.051					5 ROW, 1 MOD, PF			
L	V03-0722	LP	8/22/03	angles	0°±2°					product family		code	
M	V05-0074	LP	4/12/05	dr	C. DAILY	06/18/02	MM			METRAL		213	
N	V05-0341	DAI	04/18/05	engr	M. GRAY	06/18/02	←→			size		dwg no	
P	V05-0522	DAI	06/08/05	chr	M. GRAY	06/18/02	scale		A	89047		sheet	
R	V05-0874	DAI	09/13/05	appd	M. GRAY	06/18/02	1:1					1 of 1	
sheet index		revision		R									
		sheet		1									

cage code  
22526