

THE INFORMATION CONTAINED HEREIN IS CONSIDERED "PROPRIETARY" TO BEL FUSE INC. AND SHALL NOT BE COPIED, REPRODUCED OR DISCLOSED WITHOUT THE WRITTEN APPROVAL OF BEL FUSE INC.



PATENTED:
THIS PRODUCT IS
COVERED BY U.S.
PATENT 5,736,910

DOCUMENT / PART NO.: SI-30161-F

TITLE : 10/100BT,STACK JACK, SHIELDED

ISSUE	DESCRIPTION OF CHANGE								REVIEWED BY				APPROVED BY				ECN#
A0	Update the mechanical drawing								Bain Liu				Steve Weller				06374

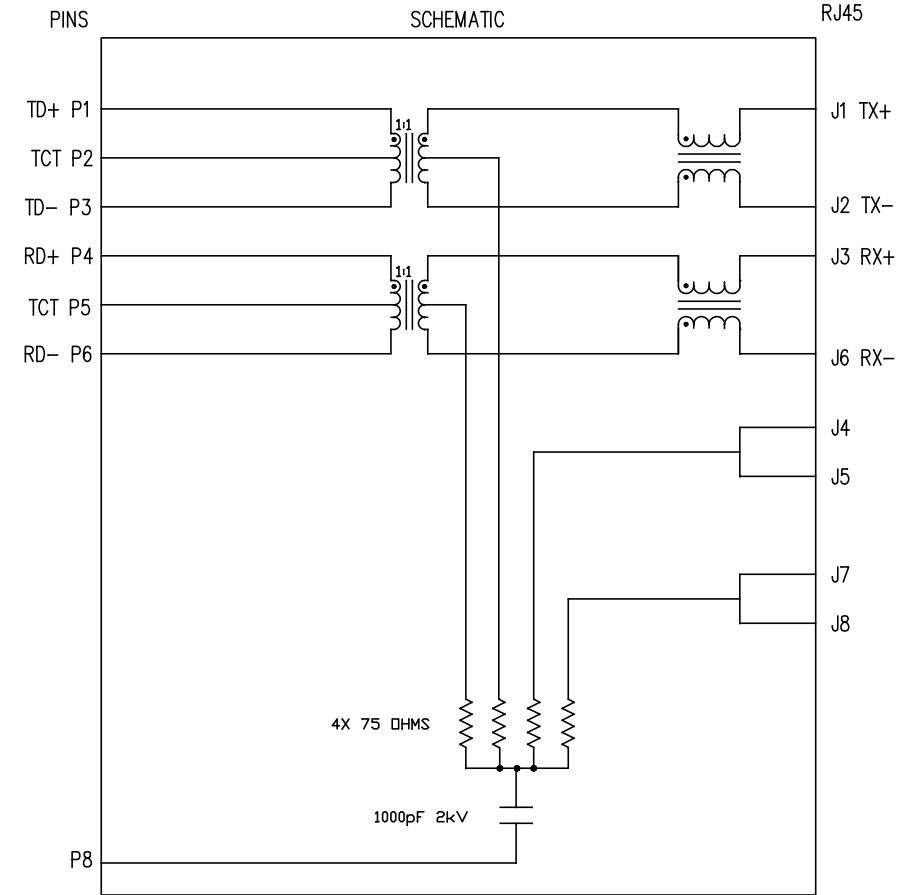


ELECTRICAL CHARACTERISTICS @ 25°C

OPERATING TEMPERATURE RANGE:	: 0°C TO +70°C
1.0 TURNS RATIO(P1-P2-P3) : (J1-J2)	: 1CT : 1 ± 3%
(P4-P5-P6) : (J3-J6)	: 1CT : 1 ± 3%
2.0 INDUCTANCE:(P6-P4)	: 350uH MIN. @ 0.1V,100KHz, 8mA DC Bias
(P3-P1)	: 350uH MIN. @ 0.1V, 100KHz, 8mA DC Bias
3.0 LEAKAGE INDUCTANCE(P6-P4 (WITH J6 AND J3 SHORT)	: 0.3uH MAX. @ 1MHz
P3-P1 (WITH J2 AND J1 SHORT)	: 0.3uH MAX. @ 1MHz
4.0 INTERWINDING CAPACITANCE(P6,P5,P4) TO (J6,J3)	: 30pF TYP @ 1MHz
(P3,P2,P1) TO (J2,J1)	: 30pF TYP @ 1MHz
5.0 DC RESISTANCE:(J6-J3)=(J1-J2)	: 1.5 ohms Max.
(P6-P4)	: 0.7 ohms Max.
(P3-P1)	: 0.7 ohms Max.

RECEIVE

6.0 RETURN LOSS:1MHz TO 30MHz	: 18dB MIN.
60MHz TO 80MHz	: 12dB MIN.
7.0 DIELECTRIC WITHSTANDING(J1, J2) TO (P1, P2)	: 1500 Vrms
(J3, J6) TO (P3, P6)	: 1500 Vrms
8.0 INSERTION LOSS: RS=RL=100 ohms	: 1.1 dB TYP
100KHz TO 100MHz	
9.0 RISE TIME:RS=100 OHMS AND RL = 100 OHMS	: 3.0 nS MAX
OUTPUT VOLTAGE = 1 V peak	: 3.0 nS MAX
PULSE WIDTH= 112nS	
10.0CROSS TALK:1MHz TO 100MHz	: 40 dB TYP
11.0COMMON TO COMMON MODE ATTENUATION:1MHz TO 100MHz	: 35dB TYP



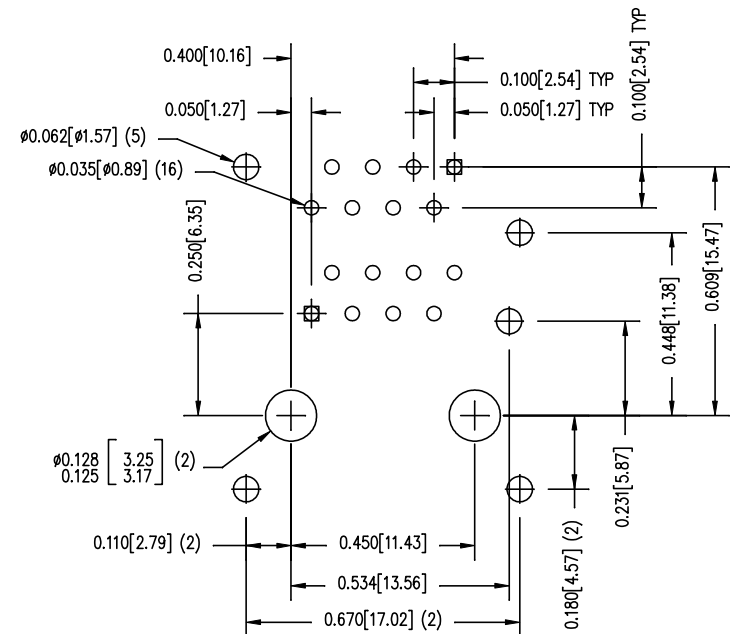
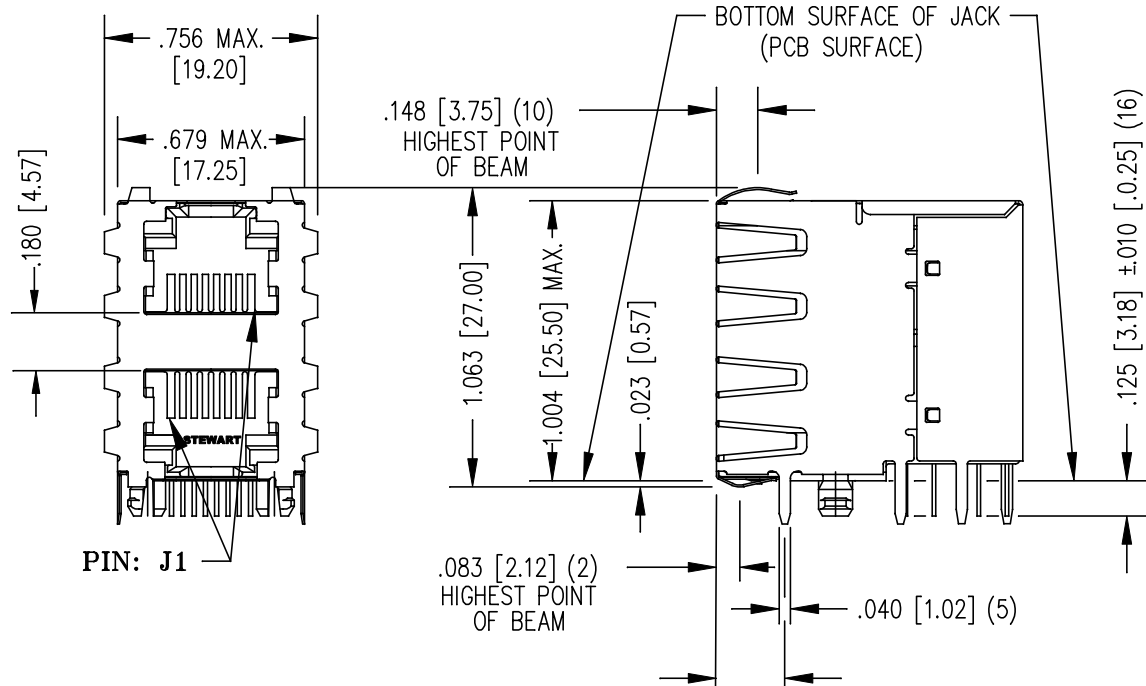
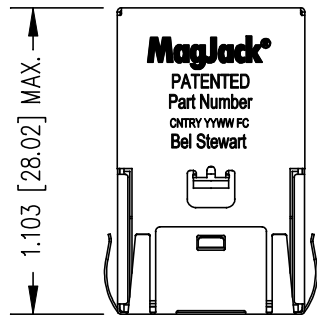
NOTES

1.0 PINS WITHOUT ELECTRICAL CONNECTION ARE OMITTED.

ORIGINATED BY	DATE	TITLE	PART NO. / DRAWING NO.	STANDARD DIM.	[] METRIC DIM. AS REFERENCE		 COMPONENTS OR A CONNECTED PLANET
Zeng Xiao Chun	2011-08-18	MagJack® 10/100BT STACK JACK, SHIELDED PATENTED	SI-30161-F	TOL. IN INCH	UNIT : INCH [mm]	REV. : A0	
DRAWN BY	DATE		FILE NAME	.X	SCALE : N/A	SIZE : A4	
Zhang Ru Sheng	2011-08-18		SI-30161-F.DWG	.XX		PAGE : 2	
				.XXX			

THE INFORMATION CONTAINED HEREIN IS CONSIDERED
"PROPRIETARY" TO BEL FUSE INC. AND SHALL NOT BE
COPIED, REPRODUCED OR DISCLOSED WITHOUT THE
WRITTEN APPROVAL OF BEL FUSE INC.

RoHS



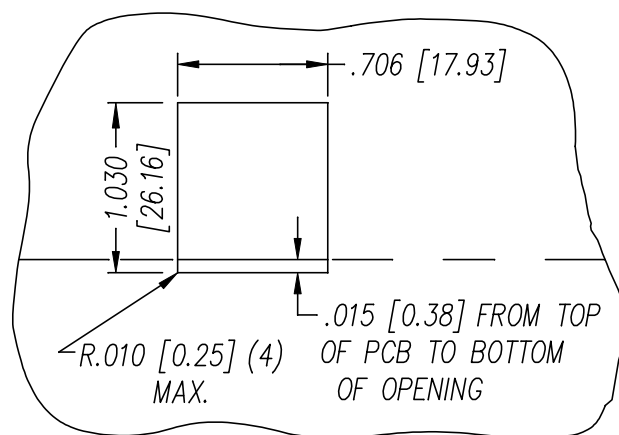
P.C.B. RECOMMENDED HOLE LAYOUT
SEEN FROM COMPONENT SIDE
ALL CENTERLINE DIMENSIONS ARE BASIC

NOTES:

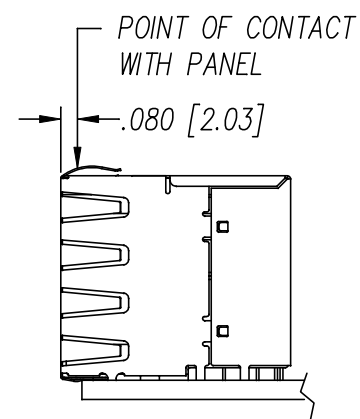
- CONNECTOR MATERIALS:
HOUSING: THERMOPLASTIC UL94 V-0
CONTACT/SHIELD: COPPER ALLOY
SHIELD PLATING: NICKEL OR TIN
CONTACT PLATING: SELECTIVE GOLD,
50 MICRO-INCHES MIN. IN CONTACT AREA.
- PIN NOT ELECTRICALLY CONNECTED MAYBE OMITTED.
SEE ELECTRICAL DRAWING FOR OMITTED PINS.
- TOLERANCES COMPLY WITH F.C.C. DIMENSION REQUIREMENTS.
- ALL TOLERANCES NOT OTHERWISE SPECIFIED TO BE ± 0.005 [0.13]
- WAVE SOLDER COMPATIBLE - PREHEAT 125° C/90SECS.

ORIGINATED BY	DATE	TITLE	PART NO. / DRAWING NO.	STANDARD DIM.	[] METRIC DIM. AS REFERENCE	
Zeng Xiao Chun	2011-08-18	MagJack® 10/100BT STACK JACK, SHIELDED PATENTED	SI-30161-F	TOL. IN INCH	UNIT : INCH [mm]	REV. : A0
DRAWN BY	DATE		FILE NAME	.X	SCALE : N/A	SIZE : A4
Zhang Ru Sheng	2011-08-18		SI-30161-F.DWG	.XX		PAGE : 3
				.XXX		





SUGGESTED PANEL OPENING
(N.T.S.)



1. THE SUGGESTED PANEL OPENING IS INTENDED TO GIVE THE USER THE ABILITY TO HAVE REASONABLE JACK / PANEL CLEARANCES YET MAINTAIN RELIABLE GROUNDING CAPABILITY.
2. ALL TOLERANCES NOT OTHERWISE SPECIFIED TO BE ± 0.005 [0.13]

ORIGINATED BY	DATE	TITLE	PART NO. / DRAWING NO.	STANDARD DIM.	[] METRIC DIM. AS REFERENCE		
Zeng Xiao Chun	2011-08-18	MagJack® 10/100BT STACK JACK, SHIELDED PATENTED	SI-30161-F	TOL. IN INCH	UNIT : INCH [mm]	REV. :	A0
DRAWN BY	DATE		FILE NAME	.X	SCALE : N/A	SIZE :	A4
Zhang Ru Sheng	2011-08-18		SI-30161-F.DWG	.XX		PAGE :	4
				.XXX			