

54LS/74LS247 ✓**BCD TO 7-SEGMENT DECODER/DRIVER**
(With Open-Collector Outputs)

DESCRIPTION — The 'LS247 has active LOW open-collector outputs guaranteed to sink 12 mA (Military) or 24 mA (Commercial). It has the same electrical characteristics and pin connections as the 'LS47. The only difference is that the 'LS247 will light the top bar (segment a) for numeral 6 and the bottom bar (segment d) for numeral 9. For detailed description and specifications please refer to the 'LS47 data sheet.

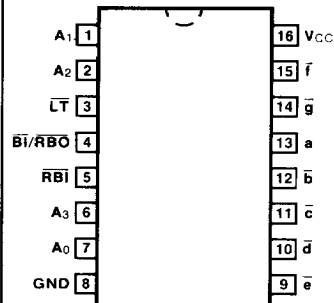
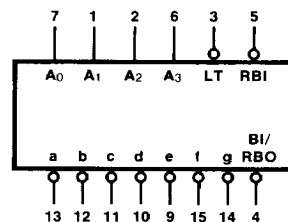
ORDERING CODE: See Section 9

PKGS	PIN OUT	COMMERCIAL GRADE	MILITARY GRADE	PKG TYPE
		$V_{CC} = +5.0\text{ V} \pm 5\%$, $T_A = 0^\circ\text{C to } +70^\circ\text{C}$	$V_{CC} = +5.0\text{ V} \pm 10\%$, $T_A = -55^\circ\text{C to } +125^\circ\text{C}$	
Plastic DIP (P)	A	74LS247PC		9B
Ceramic DIP (D)	A	74LS247DC	54LS247DM	6B
Flatpak (F)	A	74LS247FC	54LS247FM	4L

INPUT LOADING/FAN-OUT: See Section 3 for U.L. definitions

PIN NAMES	DESCRIPTION	54/74LS (U.L.) HIGH/LOW
$A_0 - A_3$	BCD Inputs	0.5/0.25
$\overline{\text{RBI}}$	Ripple Blanking Input (Active LOW)	0.5/0.25
$\overline{\text{LT}}$	Lamp Test Input (Active LOW)	0.5/0.25
$\overline{\text{BI/RBO}}$	Blanking Input (Active LOW) or Ripple Blanking Output (Active LOW)	0.5/0.25 1.25/2.0
$\bar{a} - \bar{g}$	Segment Outputs (Active LOW)	(1.0) OC*/15 (7.5)

*OC — Open Collector

CONNECTION DIAGRAM
PINOUT A**LOGIC SYMBOL**

V_{CC} = Pin 16
GND = Pin 8