

BL0106-15-29

### Features

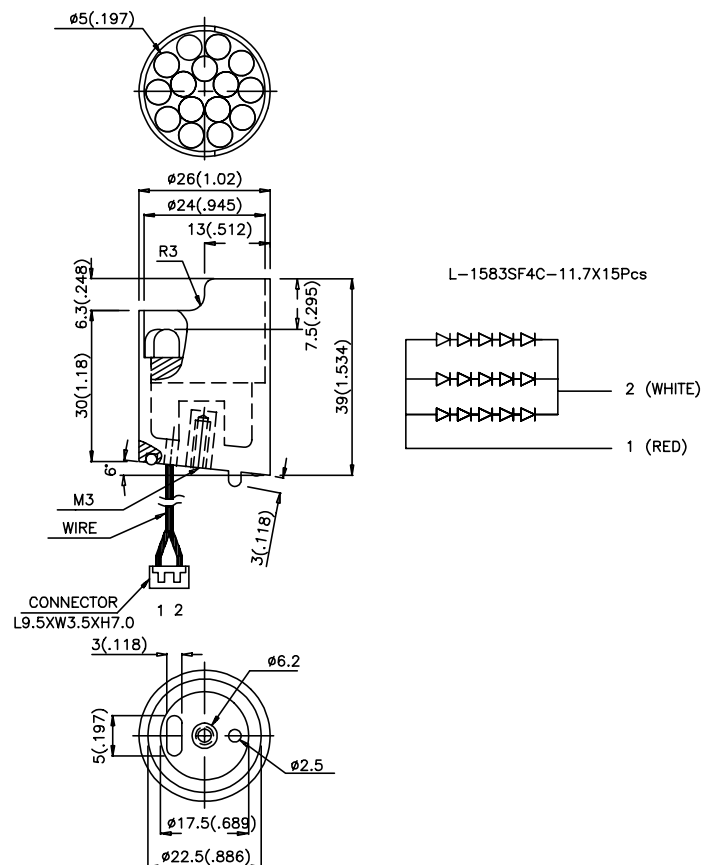
- NO. OF BUILT-IN 5mm LED LAMPS: L-1583SF4C 15PCS.
- WATERPROOF PACKAGE WITH HOOD SUITABLE FOR OUTDOOR AND INDOOR INFORMATION BOARDS.

### Description

The Super Bright Red source color devices are made with Gallium Aluminum Arsenide Red Light Emitting Diode.

The Super Bright Green color devices are made Gallium Phosphide Green Light Emitting Diode.

### Package Dimensions



#### Notes:

1. All dimensions are in millimeters (inches).
2. Tolerance is  $\pm 0.25$  (0.01") unless otherwise noted.
3. Lead spacing is measured where the lead emerge package.
4. Specifications are subjected to change without notice.

## Electrical / Optical Characteristics at T<sub>A</sub>=25°C

Symbol	Parameter	Device	Min.	Typ.	Max.	Units	Test Conditions
R <sub>i</sub>	Radiant Intensity	BL0106-15-29	8		-	mw/cm <sup>2</sup>	IF=60mA
V <sub>F</sub>	Forward Voltage		-	7	7.4	V	IF=60mA
λ <sub>peak</sub>	Peak Wavelength		-		880	nm	IF=60mA
Δλ <sub>1/2</sub>	Spectral Line Halfwidth		-		20	nm	IF=60mA
I <sub>R</sub>	Reverse Current		-		100	μA	VR =18V
F <sub>c</sub>	Response Frequency			8		MHz	

## Absolute Maximum Ratings at T<sub>A</sub>=25°C

Parameter	BL0106-15-29	Units
Power dissipation	0.9	W
DC Forward Current	90	mA
Reverse Voltage	5	V
Operation Temperature	-25 to +60	°C
Storage Temperature	-30 to +90	°C