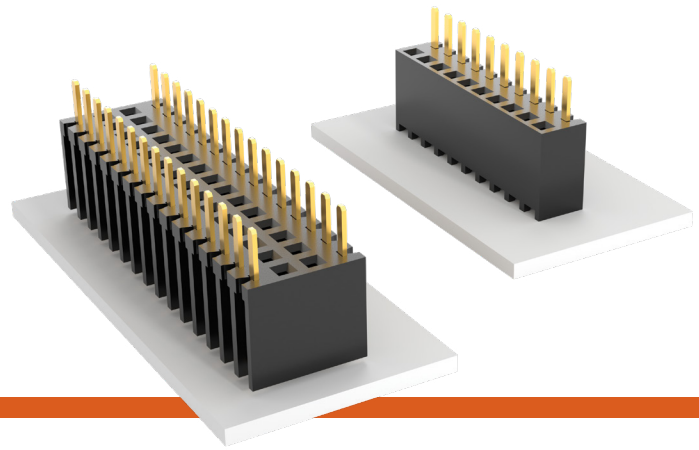


BOTTOM MOUNT SOCKET STRIPS

(2.54 mm) .100" PITCH • BSW SERIES



BSW

Mates:

TSW, MTSW, HTSW,
MTLW, TSM, EW, ZW,
HW, DW, PHT

FEATURES

- Bottom mount socket strips accept .025" SQ terminals.
- Ideal for soldering and plugging from the same side of the board.
- For low profile connections and high temperature soldering.

SPECIFICATIONS

Insulator Material:

Black Thermoplastic

Insulation Resistance:

5000 MΩ min

Contact Material:

Phosphor Bronze

Plating:

Au or Sn over

50 μ" (1.27 μm) Ni

Operating Temp Range:

-55 °C to +125 °C with Gold

-55 °C to +105 °C with Tin

Withstanding Voltage:

1000 VRMS @ 60 Hz

Insertion Depth:

(3.68 mm) .145" to

(6.35 mm) .250"

plus board thickness

PROCESSING

Lead-Free Solderable:

Wave only

ALSO AVAILABLE

MOQ Required

Other Platings

BSW	-	1	-	NO. PINS PER ROW	-	LEAD STYLE	-	PLATING OPTION	-	ROW OPTION
-----	---	---	---	---------------------	---	---------------	---	-------------------	---	---------------

02 thru 36

-04
= Standard
Lead

-24
= Low
Insertion Force

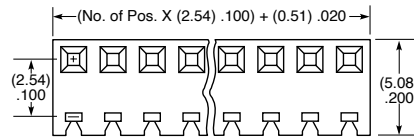
-L
= 10 μ" (0.25 μm)
Gold contact,
Matte Tin on tail

-G
= 20 μ" (0.51 μm)
Gold contact,
Gold Flash on tail

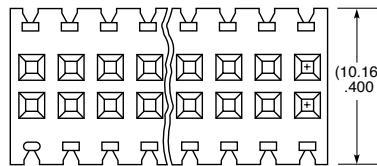
-T
= Matte Tin
(Not available with
Low Insertion Force)

-S
= Single Row

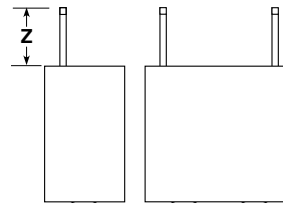
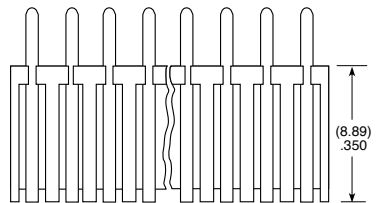
-D
= Double Row



-S



-D

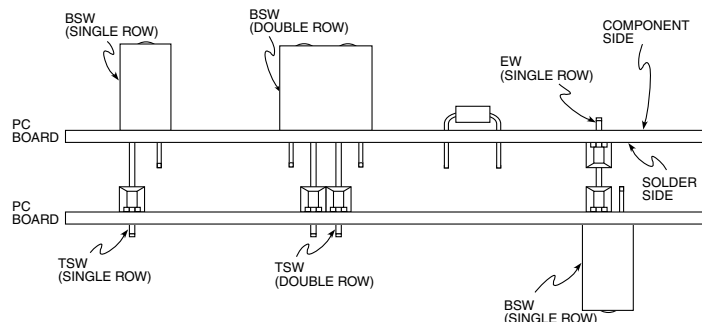


-S

-D

ROW OPTION	Z
-S	(4.31) .170
-D	(4.32) .170

APPLICATIONS



Note:

Some lengths, styles and
options are non-standard,
non-returnable.