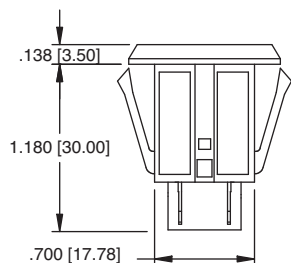
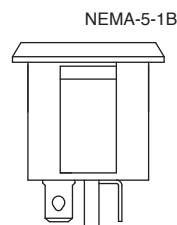
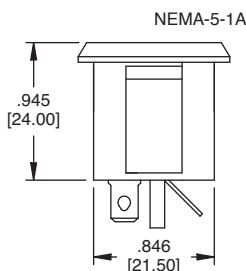


PANEL THICKNESS	DIM. A
.031 [0.80]	.945 [24.00]
.039 [1.00]	.968 [24.60]
.047 [1.20]	.992 [25.20]
.063 [1.60]	1.031 [26.20]

**NEMA-5-1  
UNIVERSAL  
PANEL SNAP**



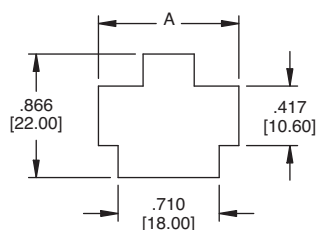
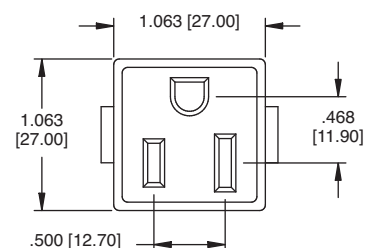
**Recommended Panel Cut-Out For  
1.50mm Panel Thickness**



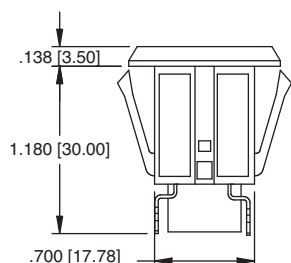
OPTIONAL STRAIGHT GROUND



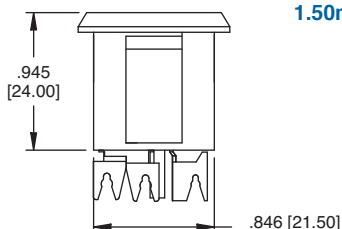
**NEMA-5-1**



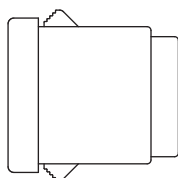
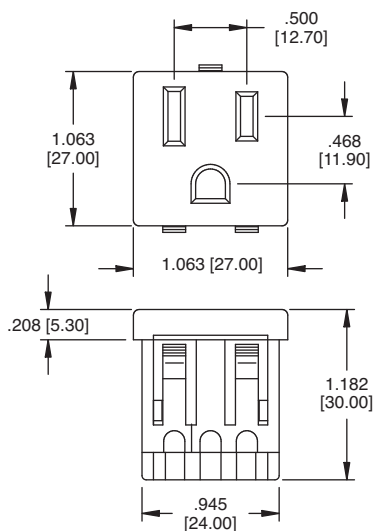
**NEMA-5-2  
UNIVERSAL  
PANEL SNAP  
12-14 Awg**



**Recommended  
Panel Cut-Out For  
1.50mm Panel Thickness**



**NEMA-5-2**



**NEMA-5-3  
UNIVERSAL  
PANEL SNAP**

**Recommended Panel Cut-Out For  
Panel 0.8mm - 1.50mm**



**NEMA-5-3**

# Mouser Electronics

Authorized Distributor

Click to View Pricing, Inventory, Delivery & Lifecycle Information:

[ADAM TECH:](#)

[NEMA-5-1-A](#)