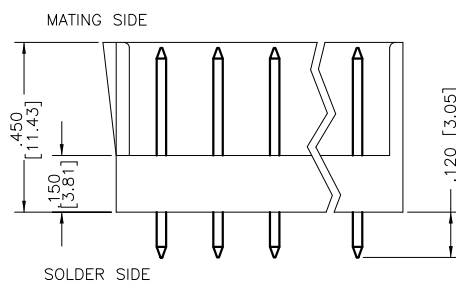
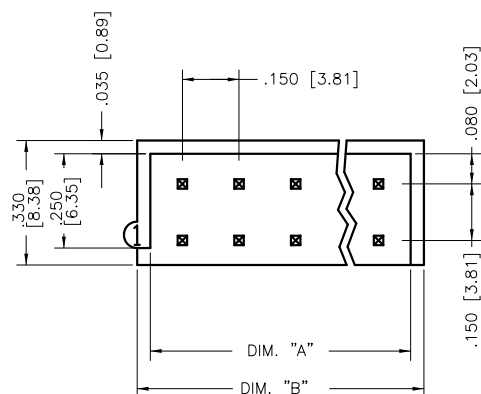


PRODUCT NUMBER

SEE TABLE



## FEATURES:



- \* STRAIGHT SHROUDED .025" [.64mm] SQUARE PINS
- \* POLARIZATION FEATURE ON BODY
- \* SELECTIVELY PLATED GOLD CONTACT AREA (SEE TABLE)
- \* TIN/LEAD PLATED CONTACT AREA (SEE TABLE)
- \* TIN PLATED CONTACT AREA (SEE TABLE)
- \* Ni UNDERPLATE SUITABLE FOR NO-CLEAN OPERATION
- \* TIN/LEAD OR TIN PLATED TAILS FOR SOLDERABILITY
- \* INTENDED FOR USE WITH .062" [1.57mm] THICK PCB

## SPECIFICATIONS—MECHANICAL:

- \* DURABILITY: 200 CYCLES
- \* OPERATING TEMPERATURE: -55°C TO +85°C

## SPECIFICATIONS—ELECTRICAL:

- \* CURRENT RATING(CONTINUOUS): 2 AMP/CONTACT MAX
- \* INSULATION RESISTANCE: 5000 MEGOHMS MIN
- \* DIELECTRIC WITHSTAND VOLTAGE: 500V RMS

mat'l. code SEE NOTE 1				surface ASME Y14.5 ✓		tolerance ASME Y14.5		projection 		product family NORCON									
ltr	ecn no	dr	date	tolerances unless otherwise specified						title									
B	V06-0052	HTB	2006-01-19	angles	fr to	XXX+.005/XX+.13		INCH/MM	2 ROW SHROUDED HEADER QPF22 - .150" [3.81] GRID										
C	V06-0662	JRV	2006-07-11																
D	V06-1209	HTB	2006-12-18					scale N.T.S.	dwg no sheet 1 of 2 54360 A										
E	V07-0624	HTB	2007-10-03	dr	T. BREWBAKER	2006-01-19													
F	V09-0115	HTB	2009-03-23	engr	T. BREWBAKER	2006-01-19													
				chr	T. BREWBAKER	2006-01-19													
				appd	T. BREWBAKER	2006-01-19	type CUSTOMER Drawing												
sheet index		revision sheet		F	F														
		1 2																	



PRODUCT NUMBER	ENG. CODE	DESCRIPTION	DIM "A"	DIM "B"	CONTACT AREA PLATING	TAIL AREA PLATING	NOTES	
A0245923	QPF22B	16 POS.(2x8)	1.220" [30.99]	1.290" [32.77]	GOLD	TIN/LEAD		OBSOLETE
A0245923LF	—	16 POS.(2x8)	1.220" [30.99]	1.290" [32.77]	GOLD	TIN	3 AND 4	
A0245924	QPF22A	10 POS.(2x5)	.770" [19.56]	.840" [21.34]	GOLD	TIN/LEAD		OBSOLETE
A0245924LF	—	10 POS.(2x5)	.770" [19.56]	.840" [21.34]	GOLD	TIN	3 AND 4	OBSOLETE
A0260871	QPF22C	10 POS.(2x5)	.770" [19.56]	.840" [21.34]	TIN/LEAD	TIN/LEAD		OBSOLETE
A0260871LF	—	10 POS.(2x5)	.770" [19.56]	.840" [21.34]	TIN	TIN	3 AND 4	OBSOLETE

## NOTES:

- ①. HOUSING MATERIAL: 30% GLASS FILLED PBT, FLAME RETARDENT PER UL 94V-0, COLOR: BLACK  
 TERMINAL MATERIAL: CA510 ALLOY  
 GOLD CONTACT AREA FINISH: 30μ" / 0.76μ Au  
 TIN/LEAD CONTACT AREA FINISH: 100μ" / 2.54μ SnPb  
 TIN CONTACT AREA FINISH: 100μ" / 2.54μ Sn  
 CONTACT UNDERPLATE: 100μ" / 2.54μ Ni  
 SOLDER TAIL FINISH: 100μ" / 2.54μ SnPb  
 LF SOLDER TAIL FINISH: 100μ" / 2.54μ Sn  
 OVERALL UNDERPLATE: 20μ" / 0.51μ Ni
2. PACKAGED IN ANTI-STATIC TRAYS
- ③. PART NUMBERS WITH AN LF SUFFIX MEET EUROPEAN UNION DIRECTIVES AND OTHER COUNTRY REGULATIONS AS DESCRIBED IN GS-22-008.
- ④. THE HOUSING WILL WITHSTAND EXPOSURE TO 260°C PEAK TEMPERATURE FOR 10 SECONDS IN A WAVE SOLDER APPLICATION WITH A .062" [1.57mm] THICK CIRCUIT BOARD.

mat'l. code SEE NOTE 1				surface ASME Y14.5	tolerance ASME Y14.5	projection	product family NORCON
ltr	ecn no	dr	date	tolerances unless otherwise specified		INCH/MM scale N.T.S.	title 2 ROW SHROUDED HEADER QPF22 - .150" [3.81] GRID
F				angles	XXX+.005/XX+.13		dwg no 54360
				dr	T. BREWBAKER 2006-01-19		sheet 2 of 2 size A4
				engr	T. BREWBAKER 2006-01-19		
				chr	T. BREWBAKER 2006-01-19		
				appd	T. BREWBAKER 2006-01-19		type CUSTOMER Drawing
sheet index	revision sheet						