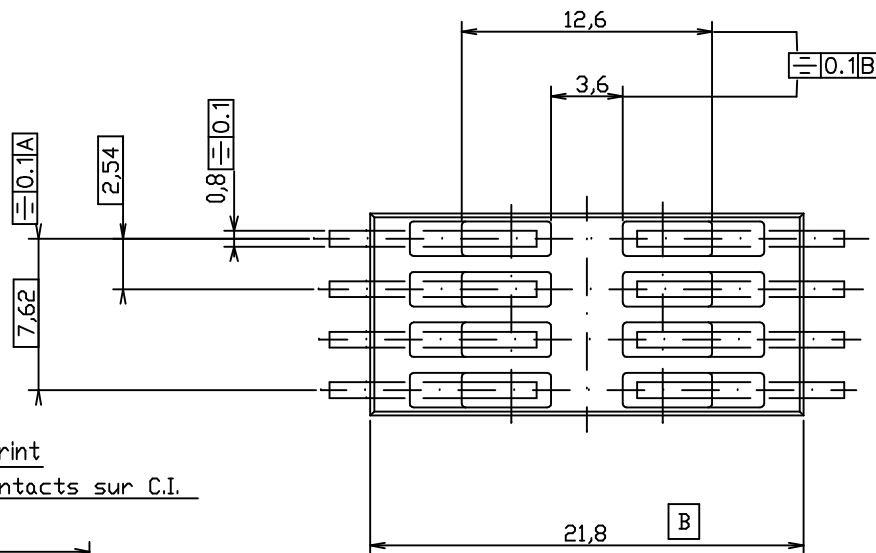
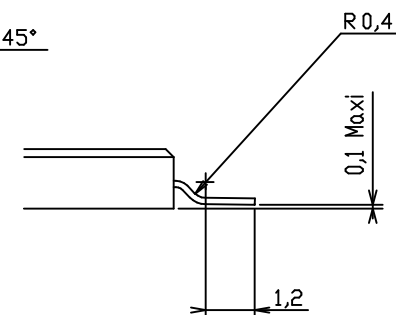
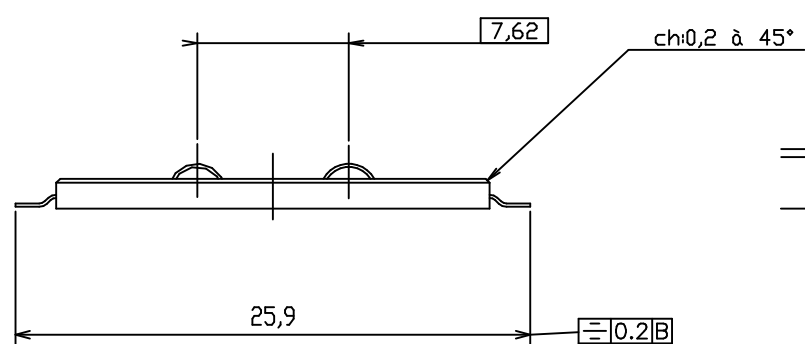
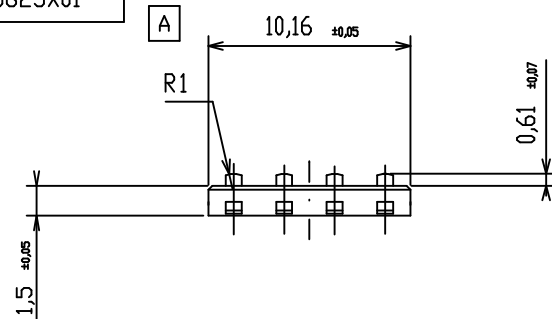
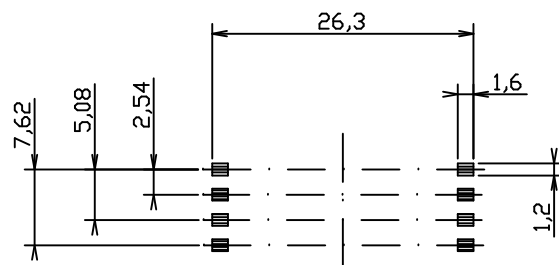


CATALOGUE NUMBER



7111S0625X01



PCB footprint
Surface d'appui des contacts sur C.I.



Tol.Gén: 0mm à 10mm ±0,1mm
10 à 30mm ±0,15mm
30 à 60mm ±0,2mm
60mm et plus ±0,3mm

Dessiné / Drawn JB BERNARDET	Verifié / Checked G.PERROT	Approuvé / Approved E.OOIC	-	-
ECHELLE/SCALE 2-4	Dossier/ File: VXX 27869		-	-
	Type: S06		-	-
	CONNECTEUR DE CARTE		-	-
	FRAMATOME CONNECTORS PONTARLIER Rue Claude CHAPPE BP19 25301 PONTARLIER CEDEX - FRANCE		-	-
	COMMUNICATION, REPRODUCTION, UTILISATION INTERDITES SAUF AUTORISATION ECRITE. NO PART OF THIS DOCUMENT MAY BE COMMUNICATED, REPRODUCED OR USED WITHOUT PRIOR WRITTEN PERMISSION.		-	-
PAGE/PAGE	VJW 53713		EDITION/ISSUE	02 24-01-01 01 15-12-97

Mouser Electronics

Authorized Distributor

Click to View Pricing, Inventory, Delivery & Lifecycle Information:

FCI:

[7111S0625X01LF](#)