

SPECIFICATION DETAILS:				
STANDARD:	<div>13</div>			
CONSTRUCTION:				
ENCLOSURE DESIGN	HERMETIC SEAL			
CONTACT MATERIAL & CONFIGURATION	SILVER			
CIRCUIT CONFIGURATION	SEE CIRCUIT DIAGRAM			
TERMINATION	SEE DRAWING			
WEIGHT				
EXPOSED METALS	CORROSION RESISTANT STAINLESS STEEL			
ELECTRICAL CHARACTERISTICS:				
CONTACT ARRANGEMENT	S.P.N.C.			
ELECTRICAL RATINGS	LOAD	28 VDC	SEA LEVEL	70,000 FT
			115 VAC, 400 CPS	28 VDC
	RESISTIVE	4 AMP	2 AMP	4 AMP
	INDUCTIVE	2 AMP	2 AMP	2 AMP
-SEA LEVEL	LAMP	1 AMP	.5 AMP	1 AMP
DIELECTRIC STRENGTH & INSULATION RES (BASIC SWITCH)	DIELECTRIC STRENGTH		INSULATION RESISTANCE	
	(≈ 60 Hz FOR 5 SECONDS)		(500 VDC ±10%)	
	1000 V Rms, 500 μ A (MAX LEAKAGE)		1000 Megohm MIN	
	1000 V Rms, 500 μ A (MAX LEAKAGE)		1000 Megohm MIN	
-BETWEEN TERMINALS AND EXPOSED NON-CURRENT CARRYING METAL	1000 V Rms, 500 μ A (MAX LEAKAGE)		1000 Megohm MIN	
-BETWEEN TERMINALS OF MUTUALLY INSULATED CIRCUITS				
-BETWEEN ALL UNCONNECTED TERMINALS OF THE SAME POLE				
SWITCH RESISTANCE	N/A			
RECOMMENDATION OR USE IN APPL LESS THAN .5 amps AND/OR 12 volts	N/A	<div>14</div>		
MECHANICAL CHARACTERISTICS:				
OPERATING FORCE	9 OZ MAX			
RELEASE FORCE	2 OZ MIN			
DIFFERENTIAL TRAVEL	.030 MAX			
OVERTRAVEL	.030 MIN			
MOUNTING STRENGTH	N/A			
LIFE:	<div>13</div>			
MECHENICAL LIFE	25,000 MIN			
ELECTRICAL LIFE AT FULL RATED LOAD	25,000 MIN			
ENVIRONMENTAL:				
TEMPERATURE RANGE	-65°F TO +250°F			
ALTITUDE RANGE	SEA LEVEL TO 70,000 FT			
SHOCK <div>13</div>	PER MIL-S-8805 SYMBOL M-100g			
VIBRATION <div>13</div>	PER MIL-S-8805 SYMBOL 2 - 10-2000 Hz & 15g PEAK			
MOISTURE RESISTANCE <div>13</div>	PER MIL-S-8805			
THERMAL SHOCK <div>13</div>	PER MIL-S-8805			
SALT SPRAY <div>13</div>	PER MIL-S-8805			

38HM45

5

ISSUE

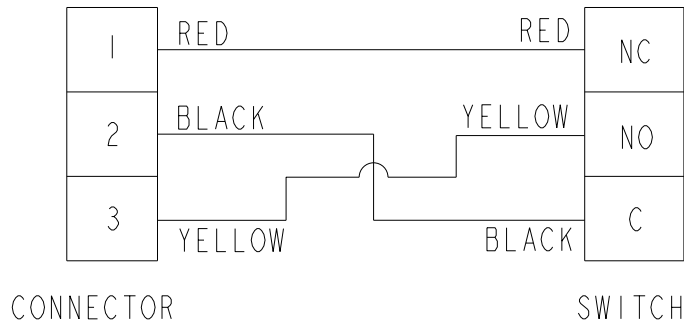
OF

1

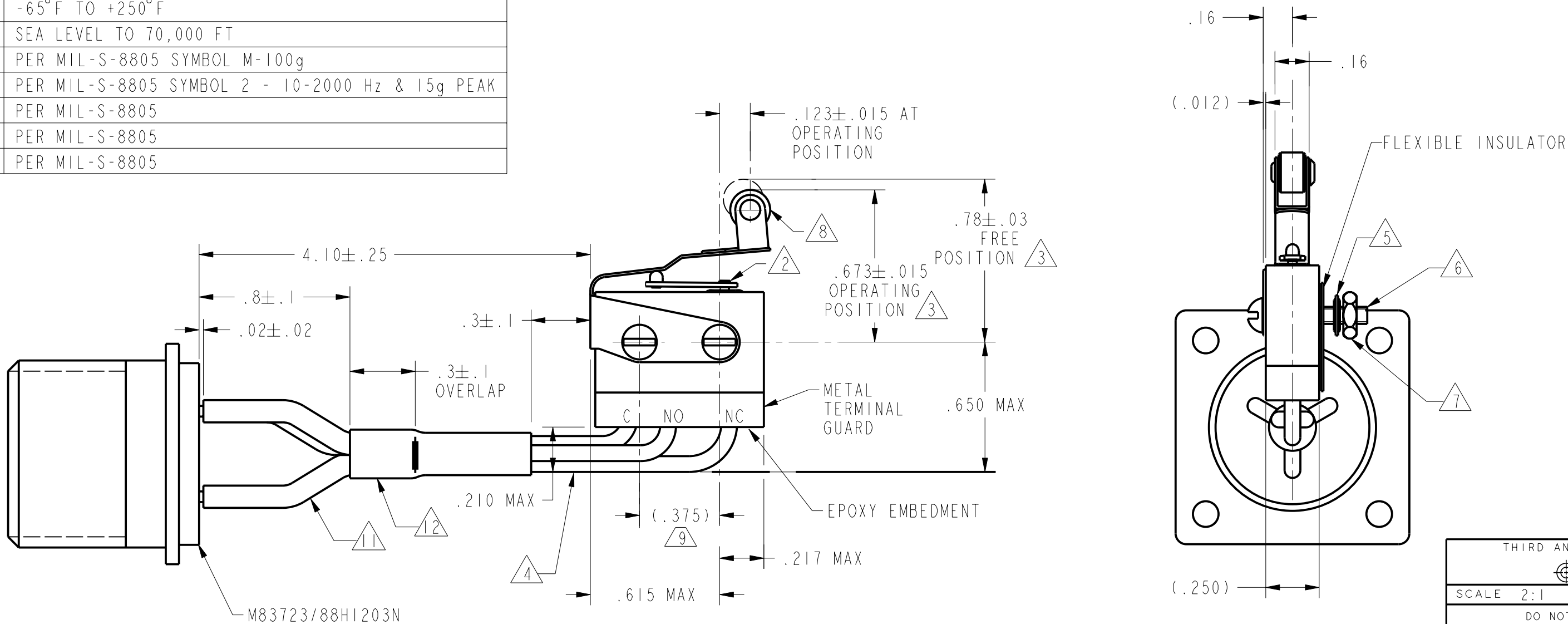
REPLACES

RELEASE NO PR-22237

X100922-HM



- NOTES
- 1 - UNIT INCLUDES 2HM SERIES TYPE BASIC SWITCH WITH ACTUATOR ASSEMBLED
- 2 - ADJUSTMENT CAUTION: DO NOT ALLOW ACTUATOR LEAF TO COME IN CONTACT WITH FIXED END OF HM LEVER, SEAL DAMAGE MAY OCCUR
- 3 - LEAF ACTUATOR ADJUSTED TO MEET SPECIFIED OPERATING POSITION PRIOR TO DELIVERY. DISASSEMBLY AND SUBSEQUENT REASSEMBLY MAY ALTER THIS CONDITION
- 4 - 3X NO. 18 WIRE LEAD PER MIL-W-22759/11 (RED N.C., BLACK COM. YELLOW N.O.)
- 5 - 2X CORROSION RESISTANT STEEL LOCKWASHER
- 6 - 2X 2-56 UNC X .500 CORROSION RESISTANT STEEL ROUND HEAD MACHINE SCREW
- 7 - 2X 2-56 UNC CORROSION RESISTANT STEEL HEX NUT
- 8 - Ø.19 X .12 WIDE CORROSION RESISTANT STEEL ROLLER (CONCENTRICITY .005 FIM)
- 9 - HOLES THROUGH ACTUATOR WILL SIMULTANEOUS ACCEPT Ø.087 MIN PINS ON .375±.002 CENTERS
- 10 - INSULATION RESISTANCE BETWEEN EITHER PIN AND CONNECTOR SHELL MUST BE 100 MEGOHMS MIN AT 500 VDC
- 11 - 3X HEAT SHRINK TUBING PER M23053/12-312-C OR EQUIVALENT
- 12 - HEAT SHRINK TUBING PER M23053/12-325-C OR EQUIVALENT
- 13 - BASIC SWITCH IS CATEGORY II DEVICE PER MIL-S-8805/8
- 14 - CONTACT HONEYWELL/MICRO SWITCH IF ADDITIONAL INFORMATION ON LOW ENERGY LOADS IS REQUIRED OR FOR HELP WITH SPECIFIC APPLICATIONS



38HM45	
X100922-HM	
REPLACES	
PAGE 1 OF 1	
RELEASE NO. PR-22237	
DRAWING NUMBER	
5	
ISSUE	
REVISIONS	
A 207497	
C S L	
21 FEB 03	
B 207593	
L J B	
6 MAR 03	
CHECK	
SAV	
21 FEB 03	
CHECK	
CSL	
21 FEB 03	
CHECK	
DRAWN	
21 FEB 03	
CHECK	
PTC/CAD	
20	

THIS DRAWING COVERS A PROPRIETARY ITEM AND IS THE PROPERTY OF MICRO SWITCH, A DIVISION OF HONEYWELL. THIS DRAWING IS NOT TO BE COPIED OR USED WITHOUT THE APPROVAL OF MICRO SWITCH.		
MICRO SWITCH a Honeywell Division	SWITCH AND CONNECTOR ASSEMBLY	CATALOG LISTING 38HM45
FED. MFG. CODE 91929		

M		38HM45
THIRD ANGLE PROJECTION		
SCALE 2:1		
DO NOT SCALE PRINT		
UNLESS OTHERWISE SPECIFIED TOLERANCES ARE		
ONE PLACE	(.0)	±.030
TWO PLACES	(.00)	±.015
THREE PLACES	(.000)	±.005
ANGLES		±
WEIGHT		

Mouser Electronics

Authorized Distributor

Click to View Pricing, Inventory, Delivery & Lifecycle Information:

[Honeywell:](#)

[38HM45](#)