

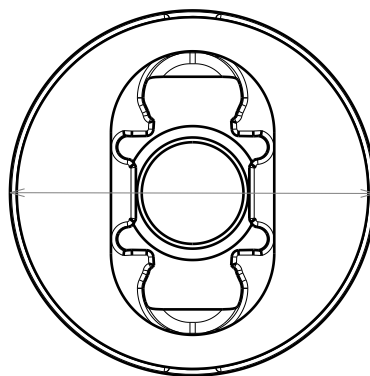
D

C

B

A

4

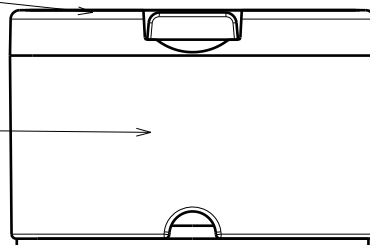
 $\varnothing 16.1$

3

Lens

Holder

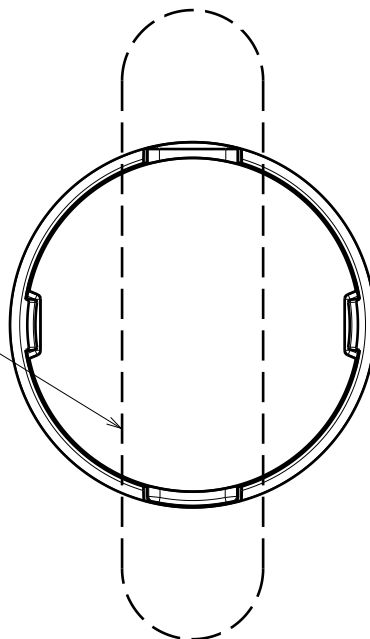
Tape 0.4mm



10.47

2

Oval beam direction
(0-90 is turned 90 degree)



MATERIALS
Lens: PMMA
Holder: PC
Tape: PU Foam

4

3

2

This drawing is our property.
It can't be reproduced
or communicated without
our written agreement.



Ledil Oy
Salorankatu 10
FIN-24100 SALO
Finland

DRAWING TITLE

DRAWN BY

ah

DATE

16.5.2012

Datasheet Tina2-CLL

CHECKED BY

DATE

16.5.2012

SIZE

A4

DRAWING NUMBER

REV

1

DESIGNED BY

ah

DATE

18.10.2011

SCALE

3:1

WEIGHT (g)

-

SHEET

1/1

D

A

1

Mouser Electronics

Authorized Distributor

Click to View Pricing, Inventory, Delivery & Lifecycle Information:

Ledil:

[CA12400_TINA2-D](#)