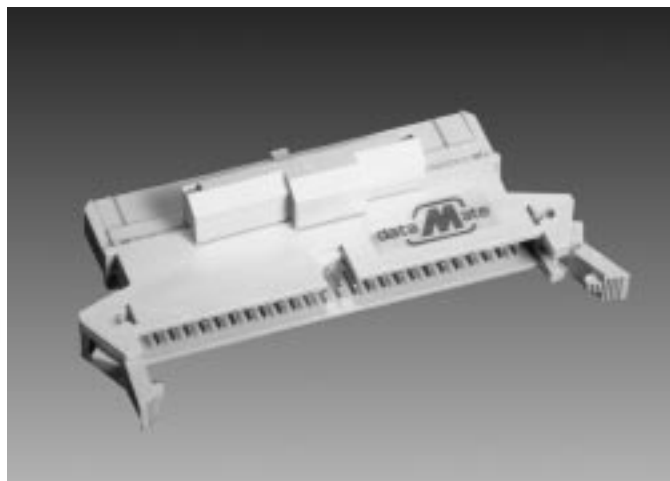


# Internal Terminators



## DM500 50 Position (Narrow)

Part Number	Circuit
DM500 - 05 - 0	= Differential
06 - 0	= Single-Ended, Passive
06 - C	= Single-Ended, Passive with Capacitor
06 - R	= Single-Ended, Active
06 - SK	= Single-Ended, Passive with SLICK Circuit
06 - RSK	= Single-Ended, Active with SLICK Circuit
06 - FPT	= Single-Ended, Forced Perfect
06 - ADR	= Single-Ended, Active Deassertion

### Specifications

#### Contact Material:

Phosphor bronze, plated gold over nickel

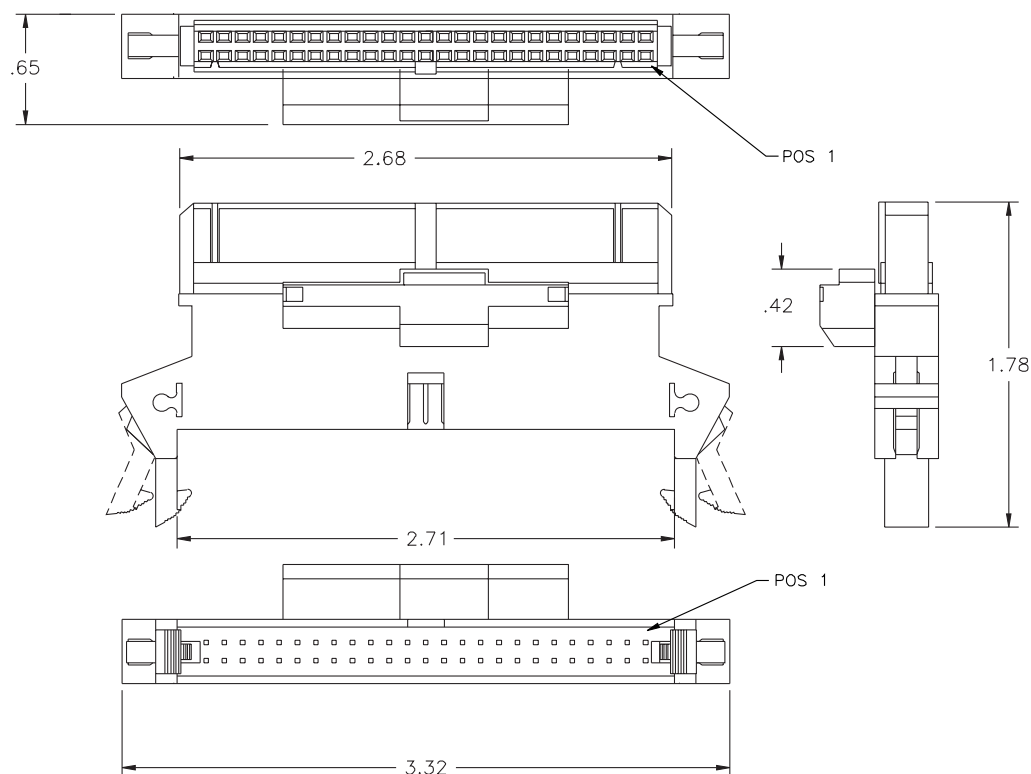
#### Housing & Insulator Material:

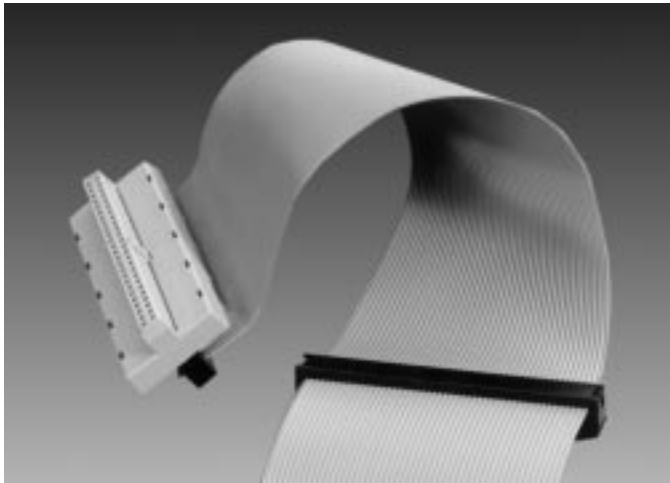
Reinforced thermoplastic, rated UL 94V-0

#### Printed Circuit Board:

FLGPN B2B MIL-P-13949, rated UL 94V-0

**Note:** All terminators are Internal Feed Through, .100".





## DM525 50 Position (Narrow)

### Specifications

#### Contact Material:

Phosphor bronze, plated gold over nickel

#### Housing & Insulator Material:

Reinforced thermoplastic, rated UL 94V-0

#### Printed Circuit Board:

FLGPN B2B MIL-P-13949, rated UL 94V-0

### Part Number

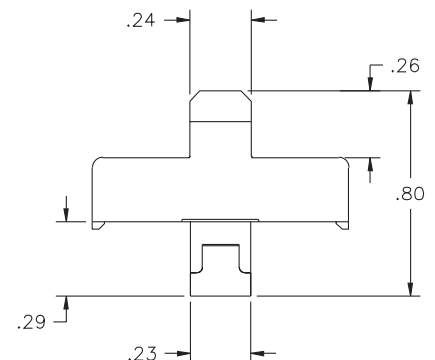
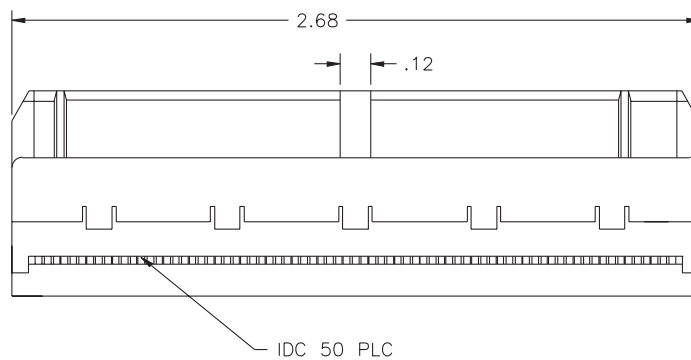
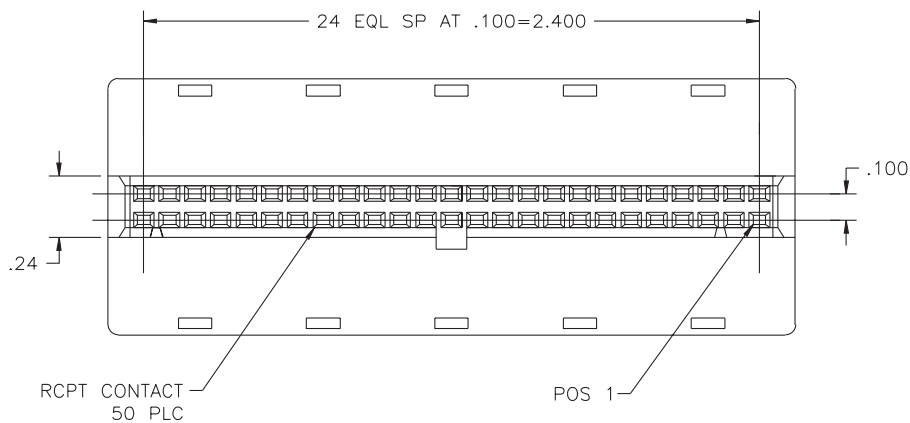
### Circuit

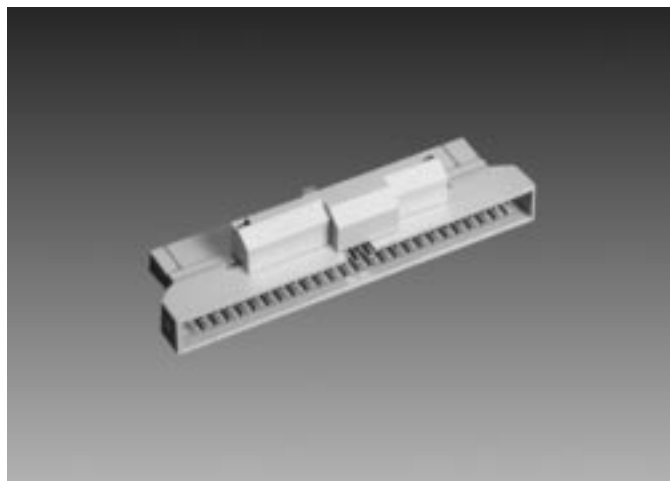
DM525 - 06 - RSK

= Single-Ended, Active with SLICK Circuit

06 - ADRF20

= Single-Ended, Fast 20





## DM550 50 Position (Narrow)

Part Number	Circuit
DM550 - 05 - 0	= Differential
06 - 0	= Single-Ended, Passive
06 - C	= Single-Ended, Passive with Capacitor
06 - R	= Single-Ended, Active
06 - SK	= Single-Ended, Passive with SLICK Circuit
06 - RSK	= Single-Ended, Active with SLICK Circuit
06 - FPT	= Single-Ended, Forced Perfect
06 - ADR	= Single-Ended, Active Deassertion

**Note:** All terminators are Internal Feed Through, .100".

### Specifications

#### Contact Material:

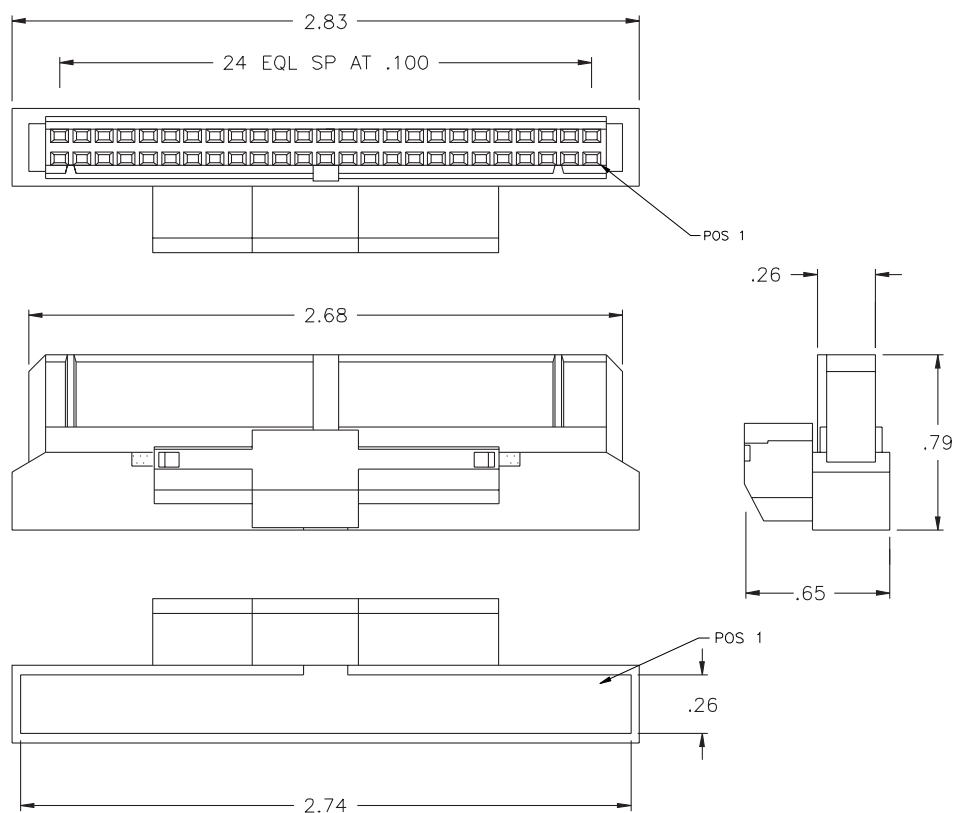
Phosphor bronze, plated gold over nickel

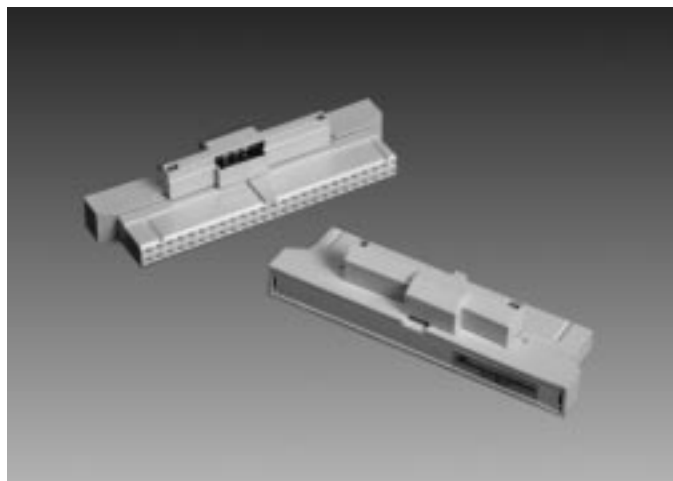
#### Housing & Insulator Material:

Reinforced thermoplastic, rated UL 94V-0

#### Printed Circuit Board:

FLGPN B2B MIL-P-13949, rated UL 94V-0





## DM650 50 Position (Narrow)

### Specifications

#### Contact:

Phosphor bronze, plated gold over nickel

#### Housing & Insulator:

Reinforced thermoplastic, rated UL 94V-0

#### Printed Circuit Board:

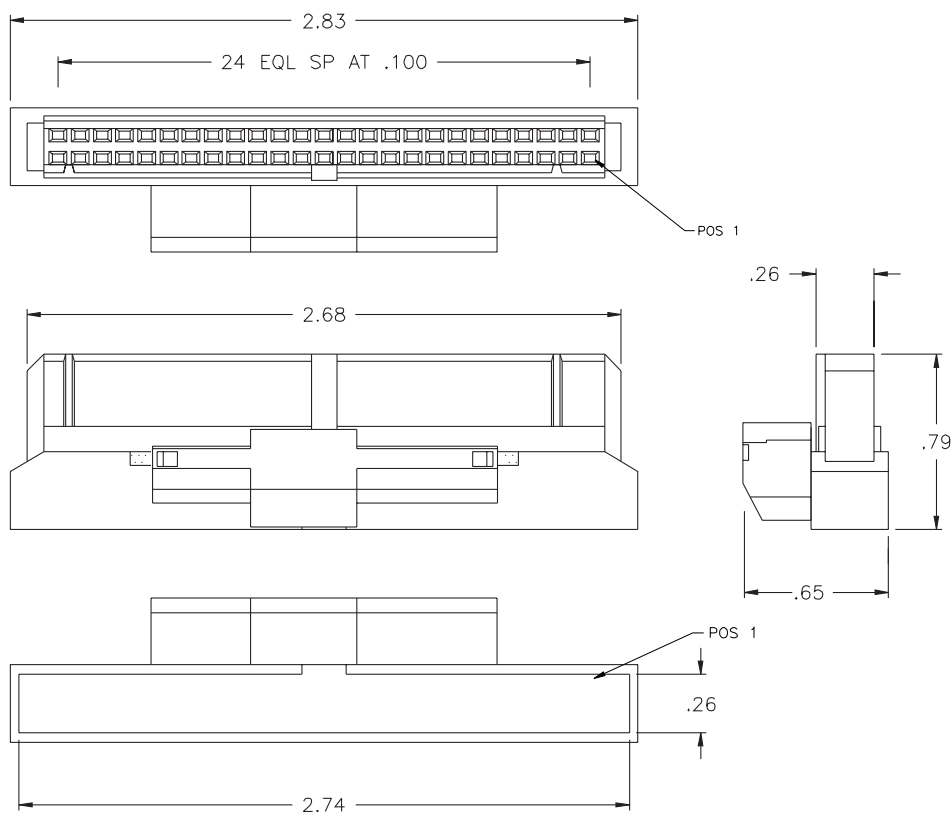
FLGFN B2B MIL-P-13949, rated UL 94V-0

### Part Number

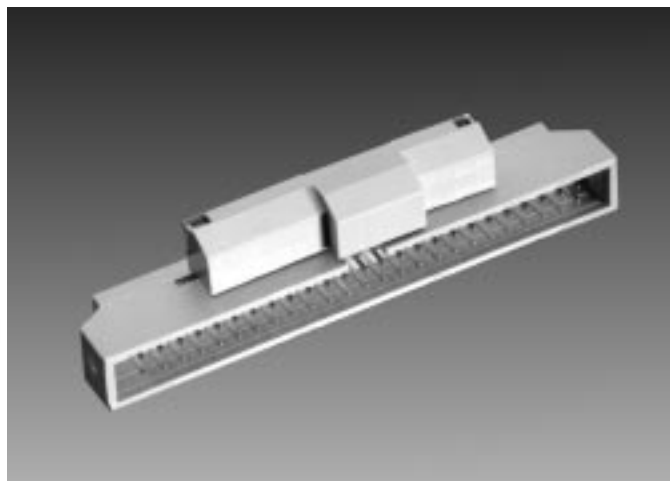
### Circuit

<b>DM650 -</b>	05 - 0	= Differential
	06 - 0	= Single-Ended, Passive
	06 - C	= Single-Ended, Passive with Capacitor
	06 - R	= Single-Ended, Active
	06 - SK	= Single-Ended, Passive with SLICK Circuit
	06 - RSK	= Single-Ended, Active with SLICK Circuit

**Note:** All terminators are Internal Female, .100".



## DM1050 50 Position (Narrow)



Part Number	Circuit
DM1050 - 01 - 0	= Differential
02 - 0	= Single-Ended, Passive
02 - C	= Single-Ended, Passive with Capacitor
02 - R	= Single-Ended, Active
02 - SK	= Single-Ended, Passive with SLICK Circuit
02 - RSK	= Single-Ended, Active with SLICK Circuit
02 - ADR	= Single-Ended, Active Deassertion

### Specifications

#### Contact Material:

Phosphor bronze, plated gold over nickel

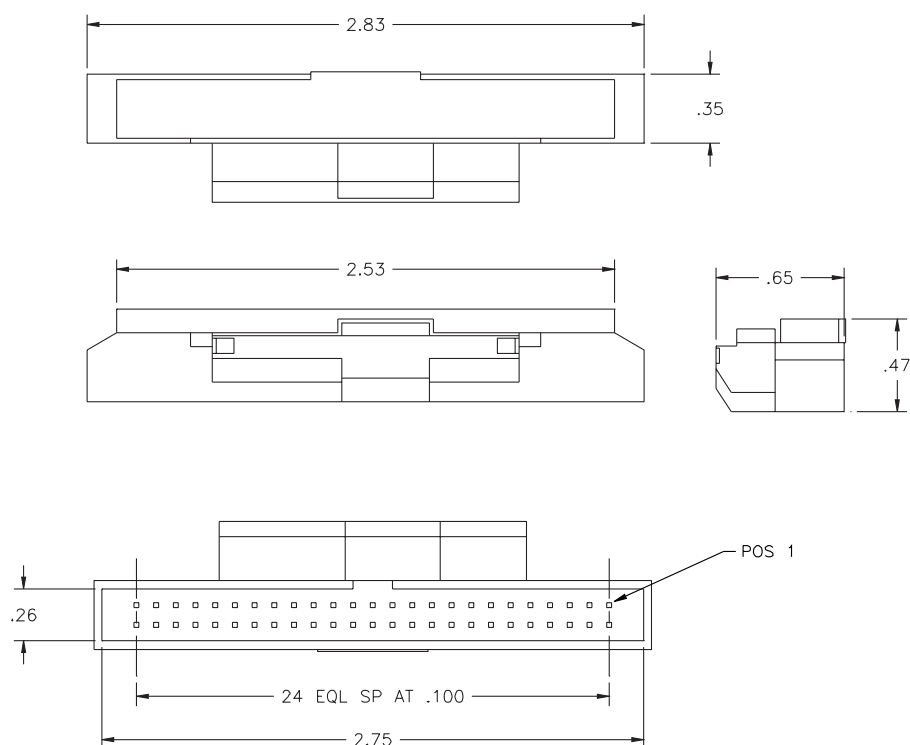
#### Housing & Insulator:

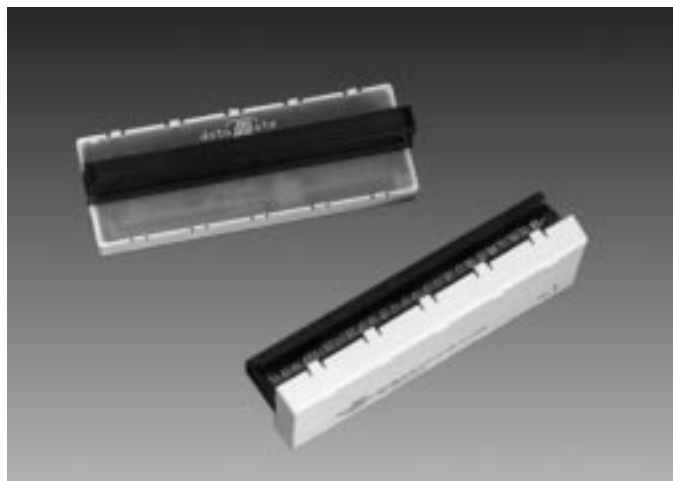
Reinforced thermoplastic, rated UL 94V-0

#### Printed Circuit Board:

FLGPN B2B MIL-P-13949, rated UL 94V-0

**Note:** All terminators are Internal Male, .100" (Mates with Female IDC Connector)





## DM1250 50 Position (Narrow)

### Specifications

#### Contact Material:

Phosphor bronze, tin plated

#### Housing & Insulator Material:

Reinforced thermoplastic, rated UL 94V-0

#### Printed Circuit Board:

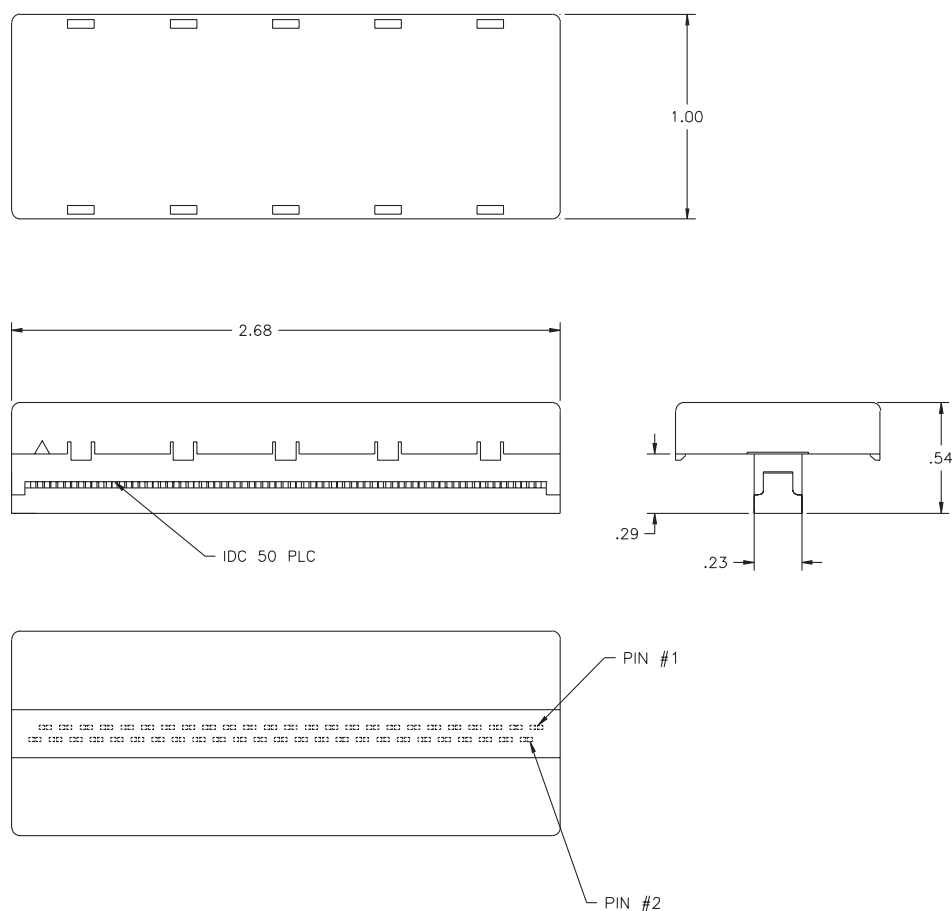
FLGFN B2B MIL-P-13949, rated UL 94V-0

**Note:** All terminators are Internal IDC, .050" Cable.

### Part Number

### Circuit

<b>DM1250 - 02 - 0</b>	= Single-Ended, Passive
02 - R	= Single-Ended, Active
06 - FPT	= Single-Ended, Forced Perfect
02 - RSK	= Single-Ended, Active with SLICK Circuit
02 - ADR	= Single-Ended, Active Deassertion



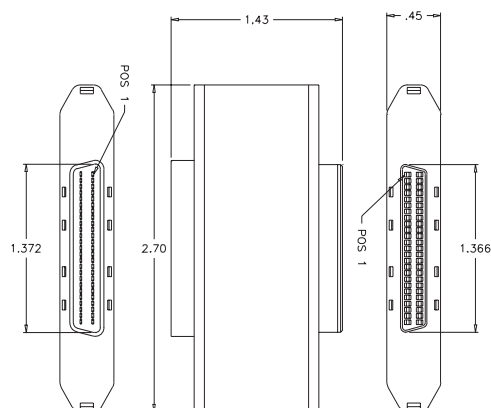


## DM6100 50 Position (Narrow) & 68 Position (Wide)

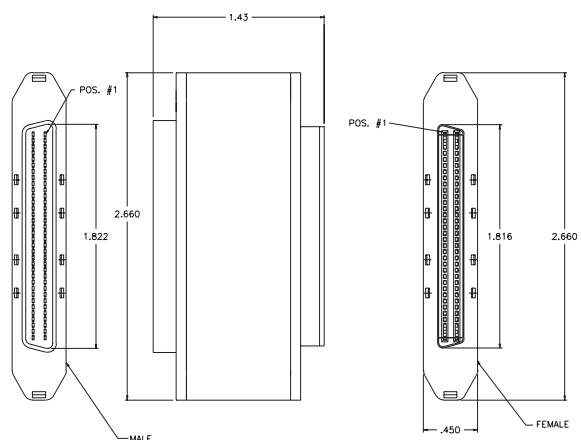
Part Number	Circuit
DM6100 - 01 - 68	= Differential
02 - 68R	= Single-Ended, Active
02 - 68ADR	= Single-Ended, Active Deassertion
5050 - R	= Single-Ended, Active

**Note:** All terminators are 50 or 68 Position Male, .050", to 68 Position Female, .050".

**50 Position**



**68 Position**



### Specifications

#### Contact Material:

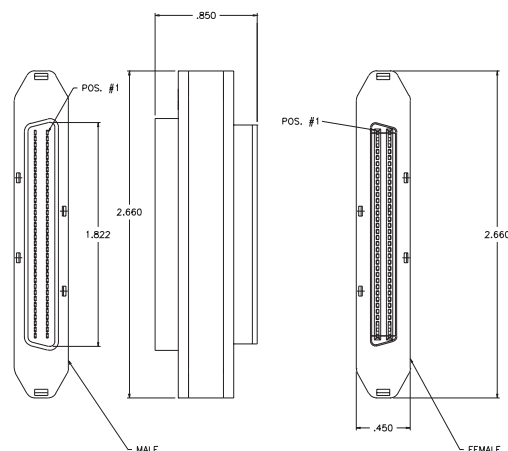
Phosphor bronze, plated gold over nickel

#### Housing & Insulator:

Reinforced thermoplastic, rated UL 94V-0

#### Printed Circuit Board:

FLGFN B2B MIL-P-13949, rated UL 94V-0







## DM1175 68 Position (Wide)

### Specifications

#### Contact:

Phosphor bronze, tin plated

#### Housing & Insulator:

Reinforced thermoplastic, rated UL 94V-0

#### Printed Circuit Board:

FLGFN B2B MIL-P-13949, rated UL 94V-0

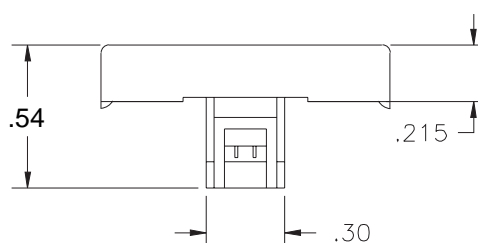
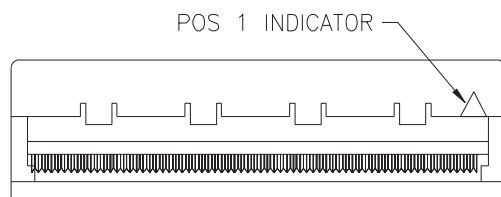
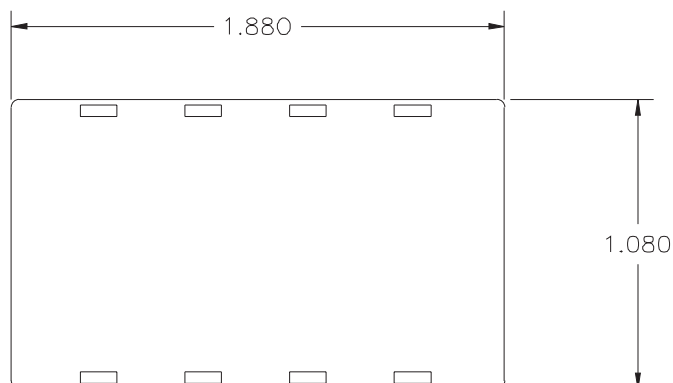
### Part Number

### Circuit

<b>DM1175 -01 - 0</b>	= Differential
01 - LVD - SE	= Multimode*
02 - 0	= Single-Ended, Passive
02 - C	= Single-Ended, Passive with Capacitor
02 - R	= Single-Ended, Active
02 - SK	= Single-Ended, Passive with SLICK Circuit
02 - RSK	= Single-Ended, Active with SLICK Circuit
02 - F40	= Single-Ended, FAST 40

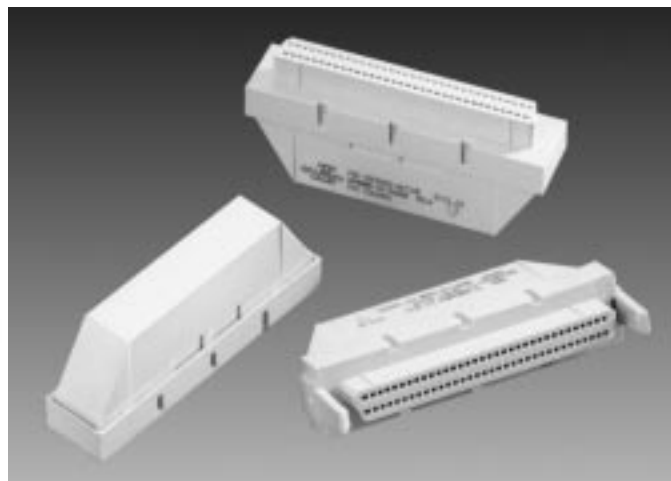
**Note:** All terminators are Internal IDC, .025" Cable.

\* Connector offset, consult factory for drawing



## DM4000 & DM4075

68 Position - Wide



Part Number	Circuit
<b>DM4000</b> - 01 - 68	= Differential
<b>or</b> 02 - 68	= Single-Ended, Passive
<b>DM4075</b> 02 - 68C	= Single-Ended, Passive with Capacitor
02 - 68R	= Single-Ended, Active
02 - 68SK	= Single-Ended, Passive with SLICK Circuit
02 - 68RSK	= Single-Ended, Active with SLICK Circuit
U2 - 68ADR	= Single-Ended, Active Deassertion
02 - 68FPT	= Single-Ended, Forced Perfect
02 - 68F40	= Single-Ended, FAST 40

**Note:** All terminators are Internal High Density Female, .050".

### Specifications

#### Contact Material:

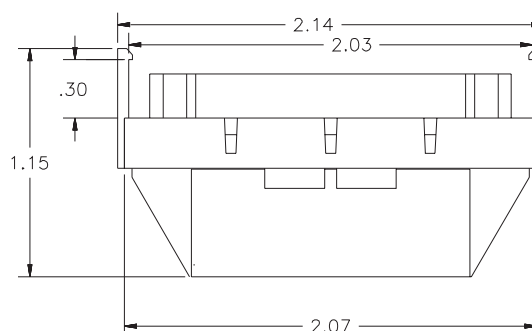
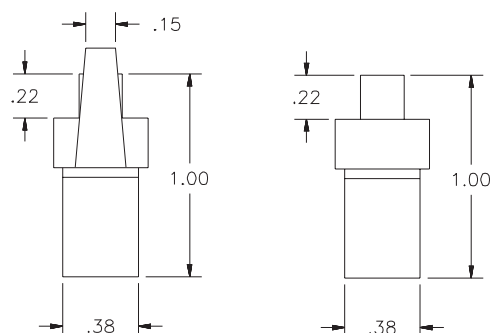
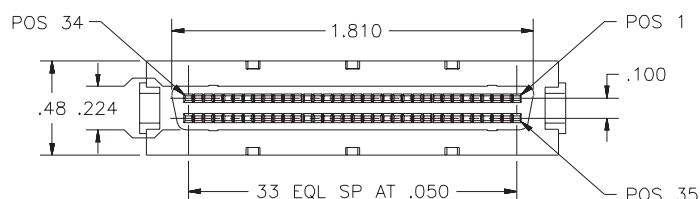
Phosphor bronze, plated gold over nickel

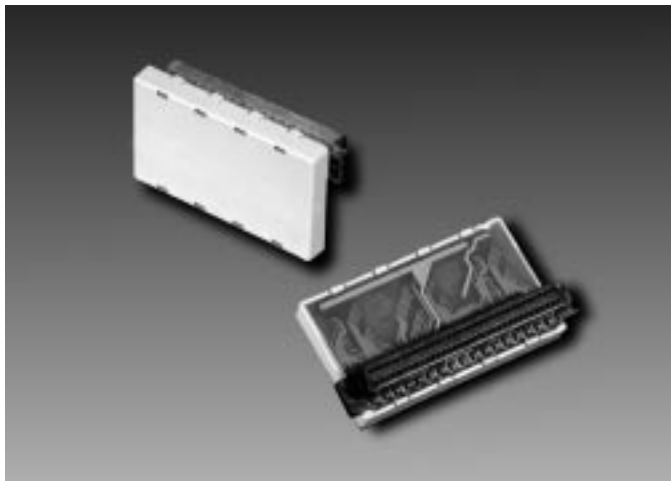
#### Housing & Insulator:

Reinforced thermoplastic, rated UL 94V-0

#### Printed Circuit Board:

FLGPN B2B MIL-P-13949, rated UL 94V-0





## DM4500 68 Position (Wide)

### Specifications

#### Contact Material:

Phosphor bronze, selective gold over nickel plated

#### Insulator Material:

Reinforced thermoplastic, rated UL 94V-0

#### Housing Material:

Reinforced thermoplastic, rated UL 94V-0

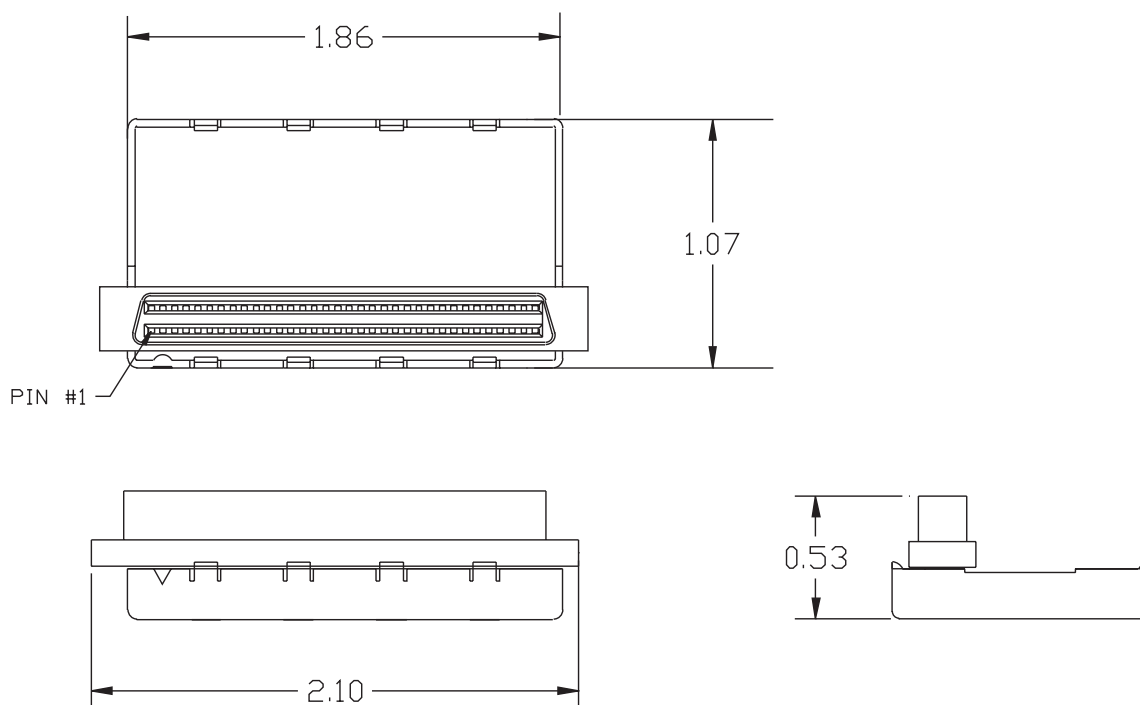
#### PCB:

FLGFN B2B per MIL-P-13949, rated UL 94V-0

### Part Number

### Circuit

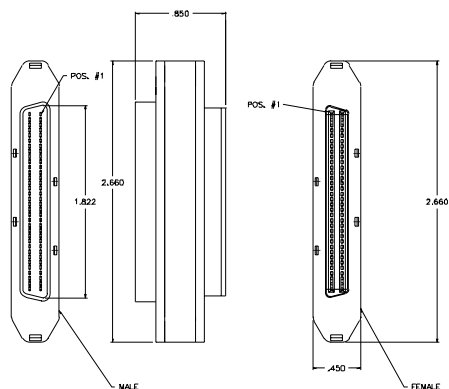
DM4500 - 01 - LVD - SE = Multimode



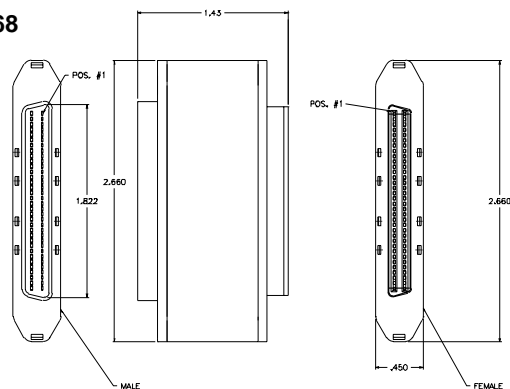
## DM6100 High Density Feed Thru Wide and Narrow

Part Number	Circuit
DM6100 - 5050 - R	= Single-Ended, Active
5050 - RSK	= Single-Ended, Active with SLICK Circuit
02 - 68	= Single-Ended, Passive
01 - 68	= Differential
02 - 68R	= Single-Ended Active
02 - 68RSK	= Single-Ended, Active with SLICK Circuit
02 - 68ADR	= SINGLE-ENDED, ACTIVE DEASSERTION
6868 - F40	= Single-Ended Fast 40
6868 - F40SK	= Single-Ended, Active with SLICK Circuit, FAST40

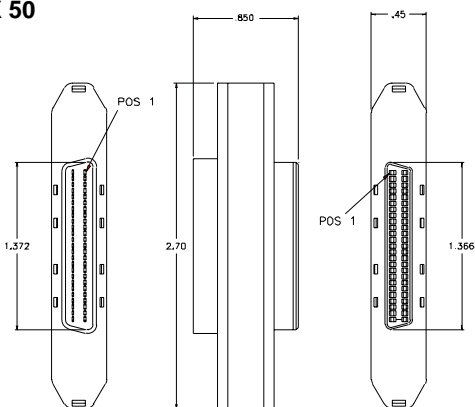
68 X 68



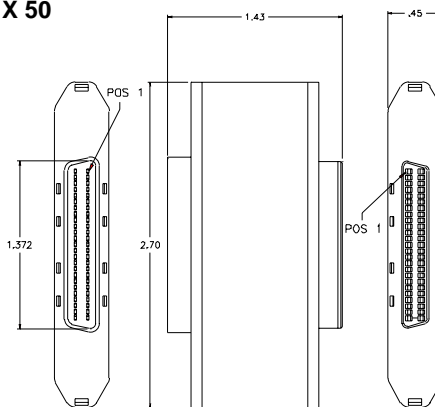
68 X 68



50 X 50



50 X 50



### Specifications

#### Contact Material:

Phosphor bronze, selective gold over nickel plated

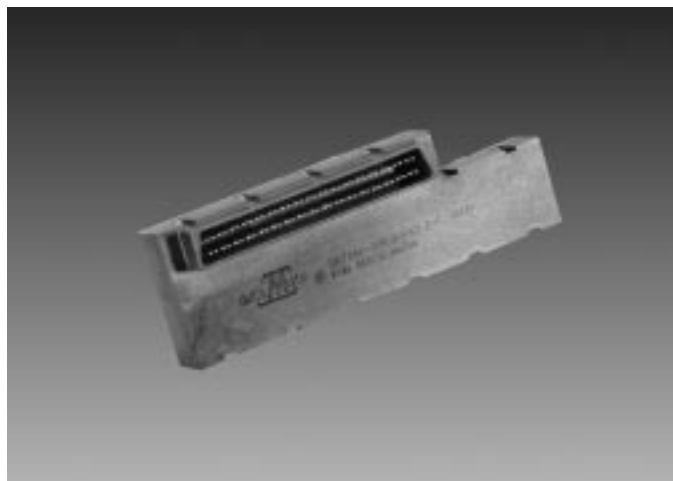
#### Insulator Material:

Reinforced thermoplastic, rated 94V-0

#### D-Shape Housings and Cover:

Reinforced thermoplastic, rated 94V-0





## DM7100 68 Position (Wide)

### Specifications

#### Contact Material:

Phosphor bronze, plated gold over nickel

#### Housing & Insulator Material:

Reinforced thermoplastic, rated UL 94V-0

#### Printed Circuit Board:

FLGFN B2B MIL-P-13949, rated UL 94V-0

### Part Number

### Circuit

<b>DM7100 - 6868 - F40</b>	= Single-Ended, FAST 40
<b>6868 - 02R</b>	= Single-Ended, Active
<b>6868 - 02ADR</b>	= Single-Ended, Active Deassertion

**Note:** All terminators are Feed Through, .050".

