

SAW Components

Preliminary Data Sheet B4057

Data Sheet

A large, stylized, 3D-rendered logo for "EPCCOS". The letters are white with a metallic, reflective texture and are arranged in a curved, overlapping fashion. The background is dark and features a faint, glowing globe with latitude and longitude lines.

SAW Components

B4057

Low Loss Filter

1228.0 MHz

Preliminary Data Sheet



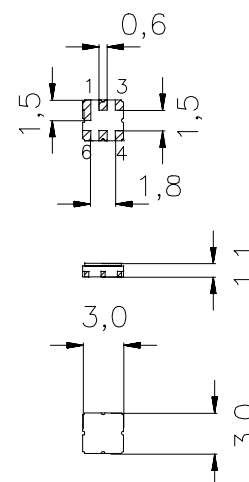
Ceramic package DCC6D

Features

- Low loss RF filter for GPS receivers
- Usable passband 20 MHz
- Low insertion attenuation, low amplitude ripple
- Unbalanced to balanced operation
- Ceramic package for **Surface Mounted Technology (SMT)**

Terminals

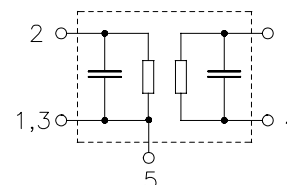
- Ni, gold-plated



Dimensions in mm, approx. weight 0,037 g

Pin configuration

- | | |
|---------|-------------------|
| 2 | Input, unbalanced |
| 4, 6 | Output, balanced |
| 1, 3, 5 | To be grounded |
| 1, 3, 5 | Case ground |



Type	Ordering code	Marking and Package according to	Packing according to
B4057	B39122-B4057-U510	C61157-A7-A68	F61074-V8089-Z000

Electrostatic Sensitive Device (ESD)

Maximum ratings

Operable temperature range	T	-40 / +85	°C	
Storage temperature range	T_{stg}	-40 / +85	°C	
DC voltage	V_{DC}	0	V	
Source power	P_S	0	dBm	source impedance 50 Ω

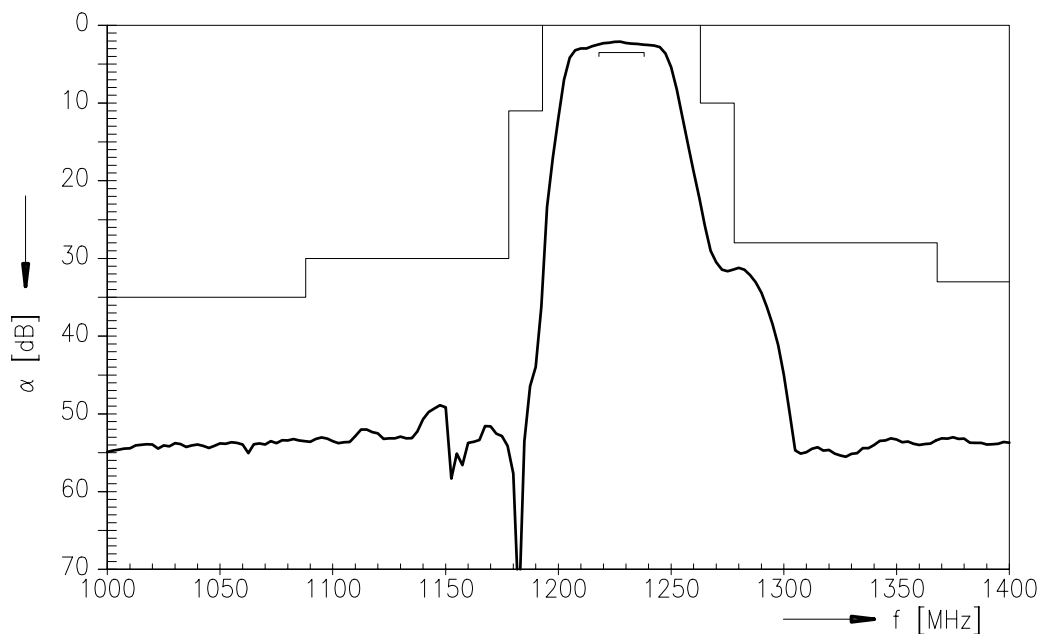
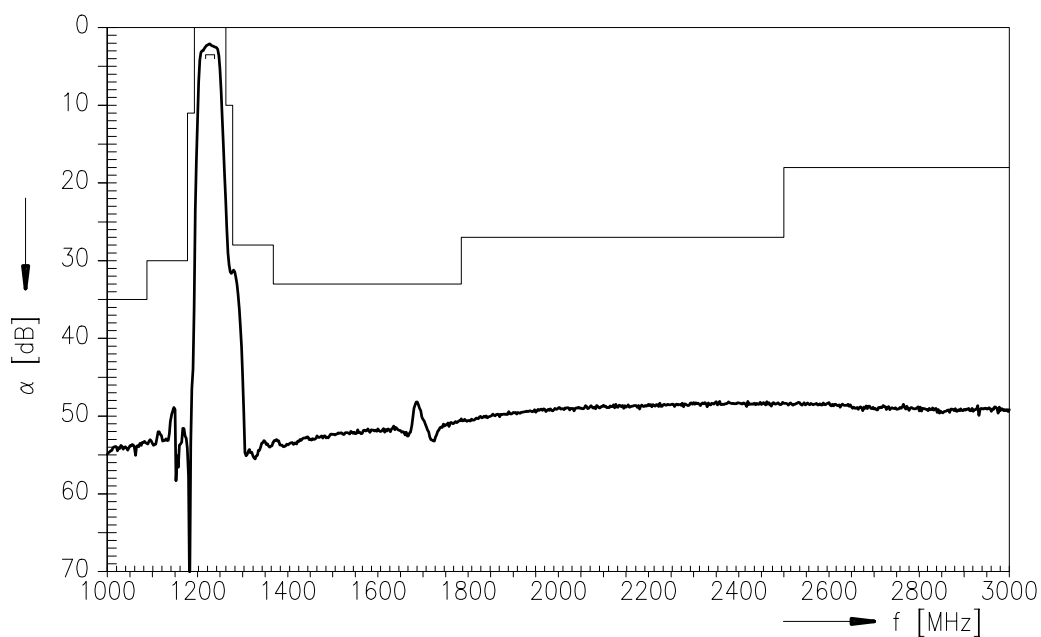
SAW Components
B4057
Low Loss Filter
1228.0 MHz

Preliminary Data Sheet


Characteristics

Operating temperature range: $T = -40\text{ °C to }+85\text{ °C}$
 Terminating source impedance: $Z_S = 50\ \Omega$
 Terminating load impedance: $Z_L = 50\ \Omega$ (balanced)

			min.	typ.	max.	
Center frequency	f_c		—	1228,0	—	MHz
Maximum insertion attenuation	α_{\max}					
	1218,0 ... 1238,0 MHz		—	3,0	3,5	dB
Amplitude ripple (p-p)	$\Delta\alpha$					
	1218,0 ... 1238,0 MHz		—	1,0	1,5	dB
Absolute attenuation	α					
	0,0 ... 1088,0 MHz		35,0	53,0	—	dB
	1088,0 ... 1178,0 MHz		30,0	48,0	—	dB
	1178,0 ... 1193,0 MHz		11,0	30,0	—	dB
	1263,0 ... 1278,0 MHz		10,0	23,0	—	dB
	1278,0 ... 1368,0 MHz		28,0	31,0	—	dB
	1368,0 ... 1785,0 MHz		33,0	48,0	—	dB
	1785,0 ... 2500,0 MHz		27,0	48,0	—	dB
	2500,0 ... 4000,0 MHz		18,0	28,0	—	dB

Transfer function

Transfer function (wide band)


SAW Components**B4057****Low Loss Filter****1228.0 MHz**

Preliminary Data Sheet

**Published by EPCOS AG****Surface Acoustic Wave Components Division, SAW MC IS PD WL****P.O. Box 80 17 09, D-81617 München**

© EPCOS AG 2000. All Rights Reserved.

As far as patents or other rights of third parties are concerned, liability is only assumed for components per se, not for applications, processes and circuits implemented within components or assemblies.

The information describes the type of component and shall not be considered as assured characteristics.

Terms of delivery and rights to change design reserved.

For questions on technology, prices and delivery please contact the sales offices of EPCOS AG or the international representatives.

Due to technical requirements components may contain dangerous substances. For information on the type in question please also contact one of our sales offices.

Mouser Electronics

Authorized Distributor

Click to View Pricing, Inventory, Delivery & Lifecycle Information:

[EPCOS:](#)

[B39122B4057U510](#)