



FCIconnect.com

Copyright FCI

PRODUCT NUMBER
SEE TABLE

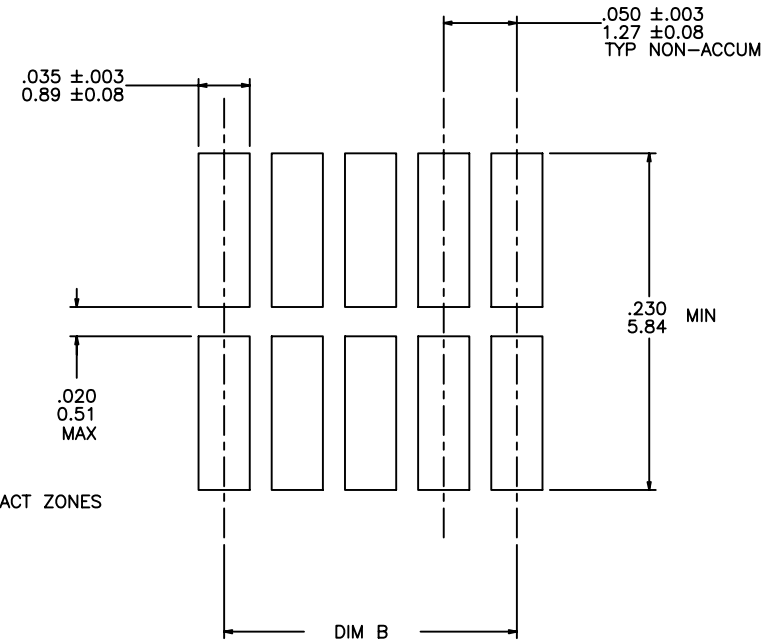
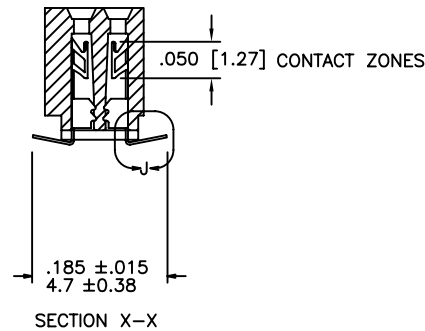
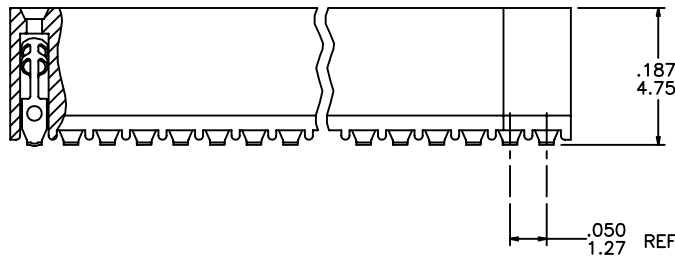
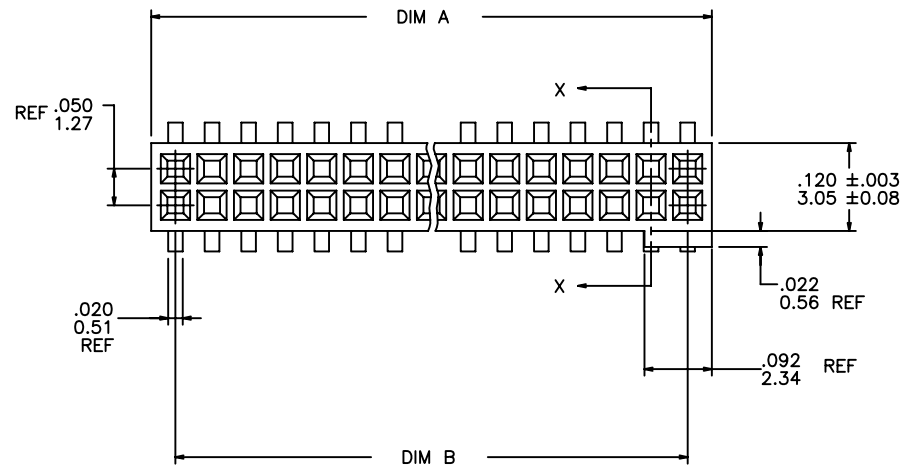
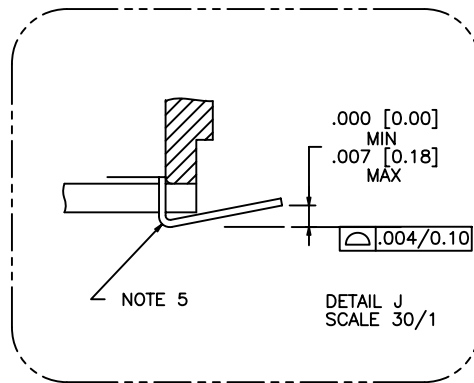




FIGURE "A"
RECOMMENDED PCB
MOUNTING PAD PATTERN



mat'l. code —					surface ISO 1302 ✓		tolerance ISO 406 ISO 1101		projection 		product family RIBCAGE										
ltr	ecn no	dr	date		tolerances unless otherwise specified						title										
AC	ELX-N-16109	GM	10/15/13		angles linear	.XXX±.01/0.3						INCH/MM .050 CC VERT. C.C. ASS'Y. SUR. MOUNT—POL.									
V	M05—0123	MHT	06/06/05			.XXX±.005/0.13															
W	M06—0225	ERE	06/12/06			.XXX±.0020/0.051															
X	M06—0370	MHT	09/26/06		dr	D. SHEAFFER		12/6/88		scale 4:1 		dwg no				sheet 1 of 3		size			
Y	M08—0053	MHT	02/27/08		enrg	J. OSWALD		12/6/88				87022				A3					
AA	M09—0058	CMR	4/06/09		chr	J. OSWALD		12/6/88				type				Product		Customer		Drawing	
AB	ELX-N-010200	YO	02/07/12		appd	J. OSWALD		12/6/88													
sheet	revision	AC	AC	AC																	
index	sheet	1	2	3																	

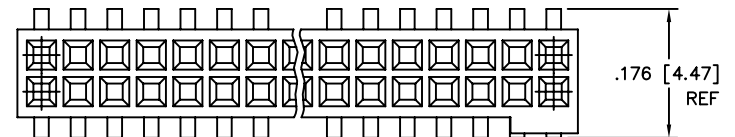
PRODUCT NO. NOTE 3, 9	SIZE	DIM A	DIM B	SPECIAL PACKAGING	TAPE WIDTH PITCH	PCS. PER REEL
87022-X05	2 X 5	.266/6.76	.200/5.08	NOTE 7	24mm 12mm	750
-X10	2 X 10	.516/13.11	.450/11.43	NOTE 7	24mm 12mm	750
-X15	2 X 15	.766/19.46	.700/17.78	NOTE 7	44mm 12mm	500
-X20	2 X 20	1.016/25.81	.950/24.13	NOTE 7	44mm 12mm	500
-X25	2 X 25	1.266/32.16	1.200/30.48	NOTE 7	44mm 12mm	500
-X30	2 X 30	1.516/38.51	1.450/36.83	NO	—	—
-X35	2 X 35	1.766/44.86	1.700/43.18	NO	—	—
-X40	2 X 40	2.016/51.21	1.950/49.53	NO	—	—
-X45	2 X 45	2.266/57.56	2.200/55.88	NO	—	—
87022-X50	2 X 50	2.516/63.91	2.450/63.23	NO	—	—
87022-X25 MIL.	2 X 25	1.266/32.16	1.200/30.48	NO	—	—

NOTE 6

NOTES :

- HOUSING MATERIAL :
LCP GLASS FILLED . FLAME RETARDANT PER UL94V-0.
COLOR : NATURAL
- TERMINAL MATERIAL : BeCu
- TERMINAL PLATING :
3.1 87022-6XX
30u"/.76u MIN GOLD OR GXT OVER Ni ON CONTACT ZONES.
100u"/2.54u MIN Sn. OVER Ni IN SOLDERING ZONES.
OTHERWISE GOLD FLASH OR UNPLATED. MATTE TIN FINISH
AT SOLDERING ZONE.
3.2 87022-1XX
30u"/.76u MIN GOLD OVER Ni ON CONTACT ZONES.
GOLD FLASH OVER Ni IN OTHER ALL ZONES.
- APPLICATION INFORMATION:
A. RECOMMENDED MOUNTING PAD PATTERN IS
SHOWN IN FIGURE "A".
B. MATING PINS TO BE .0176/0.447 TO .0181/0.459 DIA.
C. MATING PIN TIPS TO BE IN TRUE POSITION TO MATING
GRID WITHIN .008/0.20 DIA.
D. SUGGESTED MATING PIN LENGTH .130/3.30
±.010/0.25.

- LEAD TIPS TO BE ABOVE HEEL, UP TO .007/0.18 MAX.
COPLANARITY TO BE MEASURED AT LOWEST POINT (HEEL).
- SOLDERTAIL SHALL BE FINISHED IN ACCORDANCE WITH MIL-STD-1276.
HOT SOLDER DIP (FINISH 51) OR FUSED (REFLOWED) TIN LEAD PLATE
(FINISH 34). 100u"/2.54u MIN.



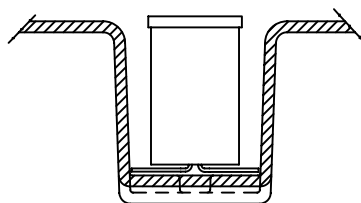
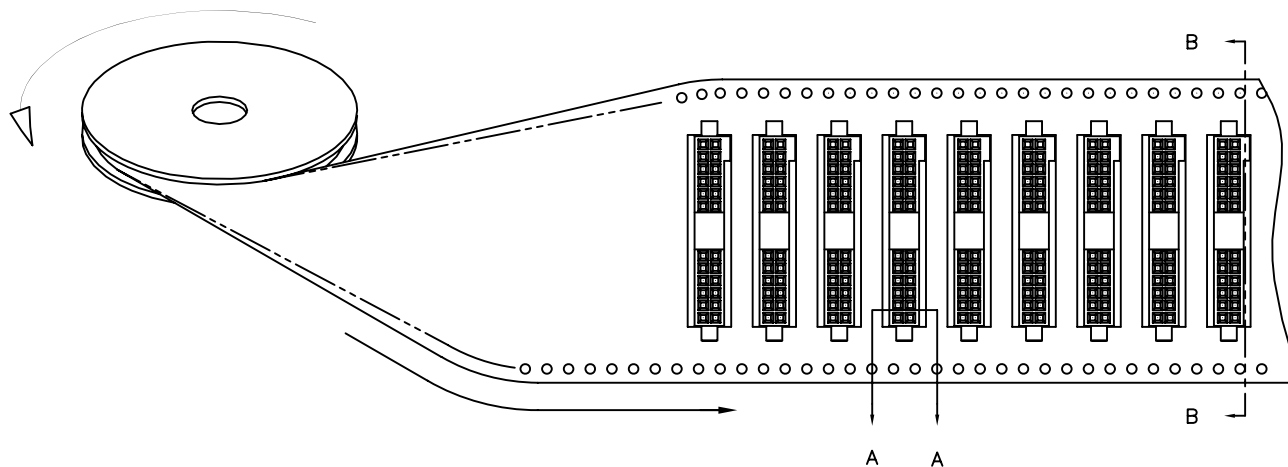
- ADD "TR" TO END OF DASH NUMBER FOR TAPE AND REEL PACKAGING
WITH CAP. TOOLED ONLY FOR NOTED CONNECTORS.
- ADD "CT" TO END OF DASH NUMBER FOR CONNECTOR WITH
VACUUM CAP IN TUBE.
- ADD "LF" SUFFIX AT THE END OF PART NUMBER FOR LEAD FREE OPTION.
- THIS PRODUCT MEETS EUROPEAN UNION DIRECTIVES AND OTHER
COUNTRY REGULATION AS DESCRIBED IN GS-22-008.
- THE HOUSING WILL WITHSTAND EXPOSURE TO 260°C PEAK TEMPERATURE
FOR 20 SECONDS IN A CONVECTION, INFRA-RED OR VAPOR PHASE REFLOW
OVEN. SEE APPLICATION NOTES/PROCEDURES IF THEY ARE AVAILABLE.
- PRODUCT SPEC PER BUS-12-087.

mat'l. code				surface		tolerance	projection	product family		
—				ISO 1302 ✓		ISO 406 ISO 1101		RIBCAGE		
ltr	ecr	no	dr	date	angles	linear	INCH/MM scale 4:1	title		
AC						.XX±.01/0.3		.050 CC VERT. C.C. ASS'Y.		
						.XXX±.005/0.13		SUR. MOUNT-POL.		
					0'±2'	.XXX±.0020/0.051		dwg no		
					dr	D. SHEAFFER	12/6/88	sheet 2 of 3		size
					enr	J. OSWALD	12/6/88	87022		A3
					chr	J. OSWALD	12/6/88	type Product Customer Drawing		
					app	J. OSWALD	12/6/88			
sheet	revision									
index	sheet									

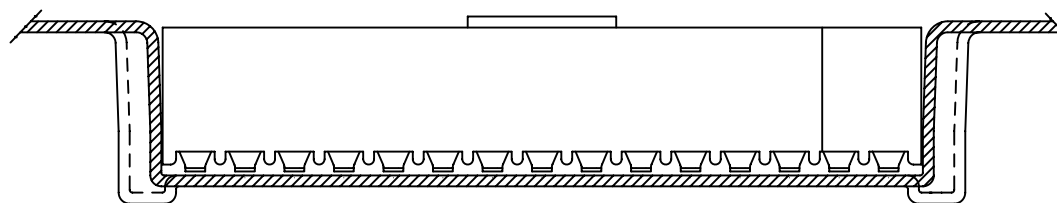
SEE TABLE

REFERENCE ONLY




TAPE WIDTH'S 32mm AND ABOVE HAS BOTH FEED TRACKS,
BELOW 32mm HAS TOP FEED TRACK ONLY.

UNREELING
DIRECTION

SECTION A-A



SECTION B-B

mat'l. code -				surface ISO 1302 ✓		tolerance ISO 406 ISO 1101		projection 		product family RIBCAGE			
ltr	ecn	no	dr	date		tolerances unless otherwise specified				title			
AC						angles 0°±2°	linear	.XX±.01/0.3		INCH/MM 	.050 CC VERT. C.C. ASS'Y. SUR. MOUNT-POL.		
					.XXX±.005/0.13								
					.XXX±.0020/0.051								
						dr	D. SHEAFFER	12/6/88			dwg no		
						engr	J. OSWALD	12/6/88			sheet 3 of 3 size		
						chr	J. OSWALD	12/6/88			87022		
						appd	J. OSWALD	12/6/88			A3		
sheet index		revision sheet									type Product Customer Drawing		

Mouser Electronics

Authorized Distributor

Click to View Pricing, Inventory, Delivery & Lifecycle Information:

FCI:

87022-630LF