

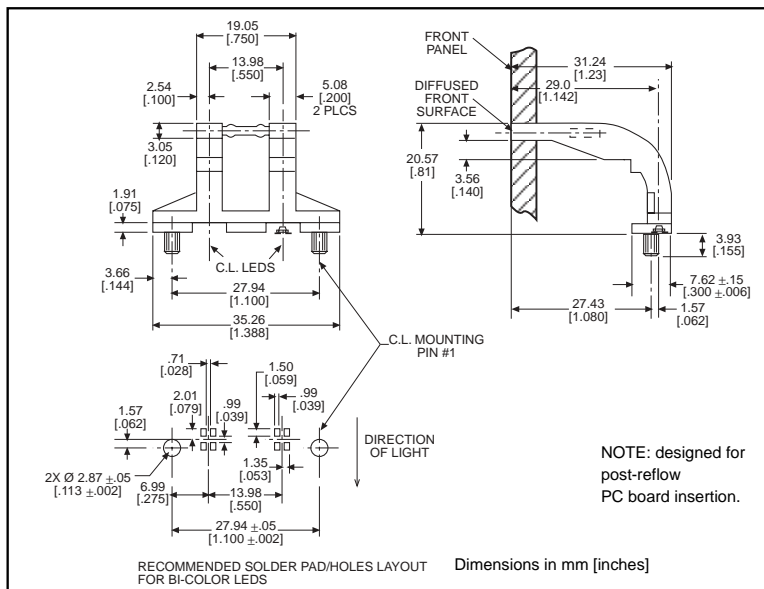
# 3 x 5mm Rectangular

**microLED® Optopipe™**

Optical Light Pipe, 2 Array (RJ45 Jack)

**Dialight**

**515-1070**



## Features

- Complements Dialight's 515-1022 Four Array Optopipe Light Pipe
- Allows indicators to be positioned above corresponding RJ45 jack or D-Subminiature
- High transmissivity polycarbonate material
- UL94V-0 compliance
- ESD protection (circuit isolation from front panel)
- Wide viewing angle
- Arrays reduce insertion costs
- Secures to PCB by press-fit

## Dialight Optopipe Light Pipe Description

This light pipe's two 3 x 5mm rectangular light emitting surfaces appear bright and are optically well isolated. The light pipe is reliably held in place by 2 press-fit pins located at either end of the light pipe array. This Optopipe™ functions as a through-the-case indicator by conducting the light over the top of connectors or switches. A textured finish on the 2 light emitting surfaces maximizes the viewing angle. The recommended light sources are Dialight's 597 Series PLCC-2 or PLCC-4 Type SMT LEDs. The LEDs are mounted in a straight line on an 0.550" pitch. The light pipe material is water clear transmissive polycarbonate rated UL94-V0, and has a 35% oxygen index.

Dialight can provide custom Optopipe™ solutions for your applications.

## Recommended MicroLED SMT LEDs for use with 515-1070

| PART NO.     | COLOR        | PAGE # |
|--------------|--------------|--------|
| 597-3001-1xx | Red          | 1-19   |
| 597-3111-1xx | AlGaAs Red   | 1-19   |
| 597-3111-5xx | AlGaAs Red   | 1-30   |
| 597-3211-1xx | Orange       | 1-19   |
| 597-3211-5xx | Orange       | 1-30   |
| 597-3301-1xx | Green        | 1-19   |
| 597-3301-5xx | Green        | 1-30   |
| 597-3401-1xx | Yellow       | 1-19   |
| 597-3401-5xx | Yellow       | 1-30   |
| 597-7701-1xx | Red/Green    | 1-20   |
| 597-7701-5xx | Red/Green    | 1-31   |
| 597-7721-1xx | Yellow/Green | 1-20   |
| 597-7721-5xx | Yellow/Green | 1-31   |
| 597-7731-1xx | Red/Yellow   | 1-20   |

## LED Data

For absolute maximum ratings and other electrical and optical data on the recommended LEDs, refer to LED data sheets.

## Operating/Storage Temperature

-30°C to +100°C