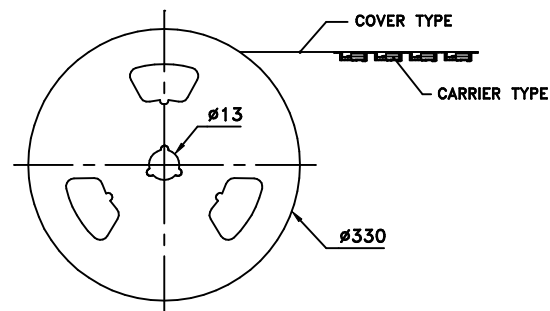
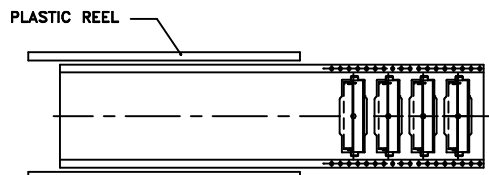
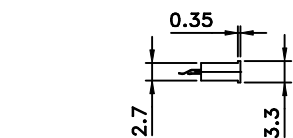
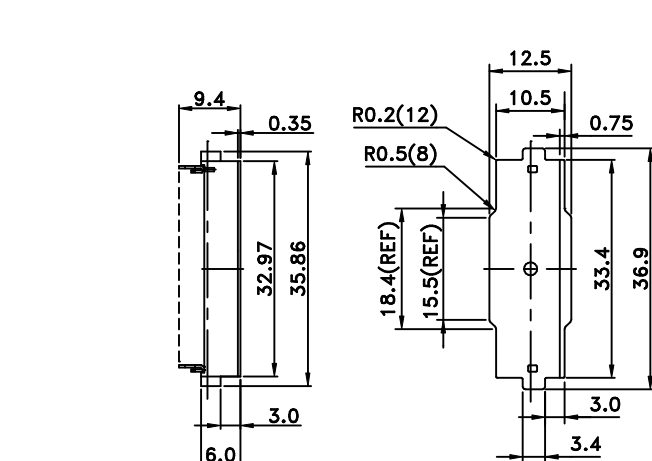


Tous droits strictement reserves. Reproduction ou communication a des tiers Interdite sous quelque forme que ce soit sans autorisation ecrite du proprietaire. Propriete de c FCI. Droits de reproduction FCI.

A **FCI**

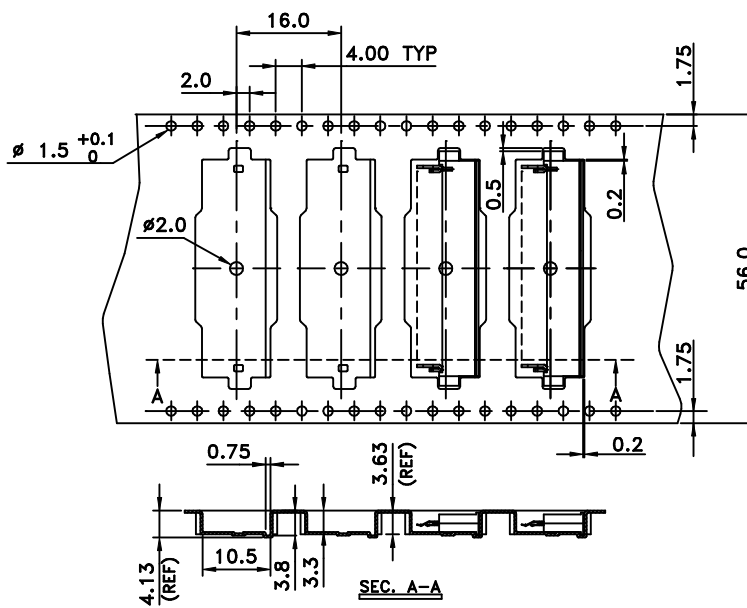
All rights strictly reserved. Reproduction or issue to third parties in any form whatever is not permitted without written authority from the proprietor. Property of FCI. Copyright FCI.

A



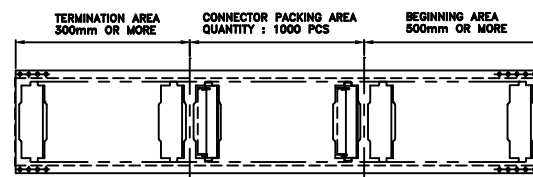
NOTES:

1. CARRIER TYPE : PS , t=0.33mm.
2. COVER TYPE : PE.
3. PLASTIC REEL : PS.



SCALE 1.5:1

IN THE DIRECTION OF PULLING



IN THE DIRECTION OF PULLING

COMPOSITION OF PACKING

mat'l. code				tolerances unless otherwise specified		CUSTOMER COPY		FCI		www.fciconnect.com	
ltr	ecn no	dr	date	linear	.X ±.38	projection	title	product family	CF	code	sheet
A					.XX ±.25						
					.XXX ±.10						
				angles	0° ±2°	MM	A4	10014748	SMT 2 ROWS	2 of 2	
				dr	JASON HSU 7/7/03'						
				enr	JASON HSU 7/7/03'						
				chr	JASON HSU 7/7/03'	scale	N/A				
				appd	STERLING LIN 7/7/03'						
sheet index	revision sheet										

cage code 22526

ACAD

PDM: Rev:A

STATUS: Released

Printed: Oct 10, 2008