

## Autotransformer AT3 10-38/42-4



Picture shows AT3 2-20/21-4

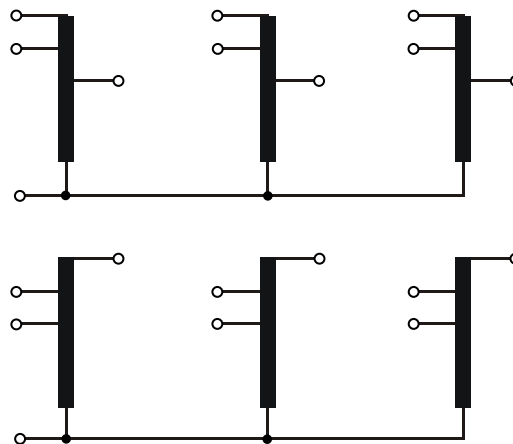
### Advantages

Low weight and small size (compared to isolating transformers)
Very high efficiency
Inverse operation possible
Patented assembly technology to lower heat losses
Very good corrosion protection and low noise thanks to BLOCKIMPEX vacuum impregnation
Fixed, contact protected screw connection terminals complying with UVV BGV A3
Multifunctional fixing rails with 12 oval slots
Enlarged fixing rail for easy installation from above
Integrated crane eyes

### Applications

Autotransformer for adjustment of the voltage on the input and output sides with no requirement for electrical isolation.

### Sample application



### Standards

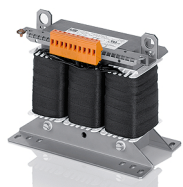


Autotransformer  
to: VDE 0570 Teil 2-13, DIN EN 61558-2-13, EN 61558-2-13,  
IEC 61558-2-13, UL 5085-1/-2, CSA 22.2 No.66

### Approvals



UL 5085-1/-2, CSA 22.2 No.66



# Autotransformer AT3 10-38/42-4



## Electrical data

Type	AT3 10-38/42-4
Input	
Rated input voltage	3 x 380/415 Vac
Rated frequency	50 - 60 Hz
Output	
Rated output voltage	3 x 400 Vac
Rated Power	10000 VA
Vector group	YNΔ0
Efficiency	84 %
Approvals	
Approvals	cURus
Environment	
Ambient temperature max.	40 °C
Safety and protection	
Type	open type
Class of Insulation System	F
Protection index	IP 00
Safety class (prepared)	I
Short circuit strength	non-short-circuit proof
Test voltage	4000 Vac, 50 Hz
Order numbers	
Order Number	AT3 10-38/42-4



## Mechanical data

Type	AT3 10-38/42-4
Terminal and mounting	
Fixing method	Fixing rail
Fixing screws	M6
Terminals	Screw-type terminals
Measures and weights	
Weight	7.00 kg
Core type	3 UI 90/31,5

