

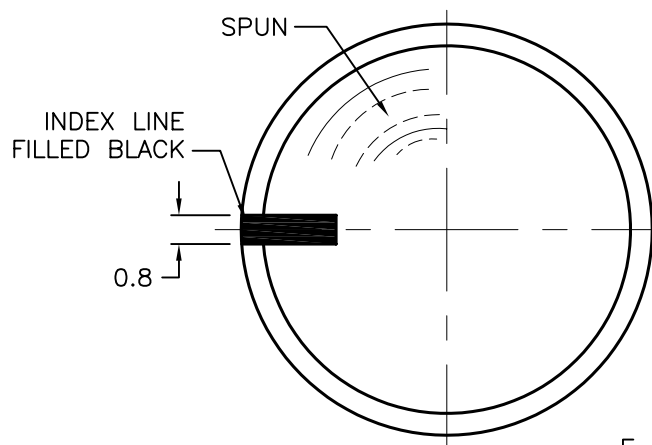
DCP #	REV	DESCRIPTION	DRAWN	DATE	CHECKD	DATE	APPRVD	DATE
1933	A	RELEASED	EO	09/07/06	SA	09/13/06	HO	09/13/06



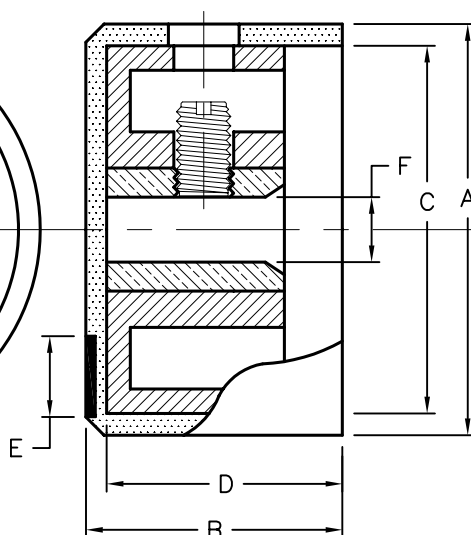
MULTICOMP P/N	DIMENSIONS						Section
	A	B	C	D	E	F	
MC21015	14.0	16.0	12.0	15.0	3.5	6.4	B
MC21016	18.0	12.0	16.0	11.0	4.0	6.4	
MC21017						4.0	
MC21018	22.0	13.0	20.0	12.0	4.0	6.4	
MC21019						4.0	
MC21020	29.0	14.0	27.0	10.0	5.0	6.4	A
MC21021	32.0	14.0	30.0	10.0	6.0	6.4	
MC21022	38.0	16.0	35.5	12.0	6.0	6.4	

Specifications:

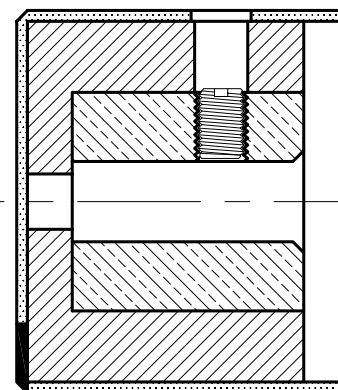
- Material:
 - Shell: Aluminum, Silver Machined Finish
 - Insert: Plastic Black Color
- Set screw: M3 X 1 pc



Section A



Section B



SPC-F004.DWG

TOLERANCES: UNLESS OTHERWISE SPECIFIED, DIMENSIONS ARE FOR REFERENCE PURPOSES ONLY.	DRAWN BY:	DATE:	DRAWING TITLE:			
	EKLAS ODISH	09/07/06	Dial Type Knobs, Plain Sides, Aluminum Shell w/Plastic Insert			
	CHECKED BY:	DATE:	SIZE	DWG. NO.	ELECTRONIC FILE	REV
	SAMI ALNADI	09/13/06	A	TA-793	TA-793.DWG	A
	APPROVED BY:	DATE:	SCALE: NTS		SHEET: 1 OF 1	
	HISHAM ODISH	09/13/06	U.O.M.: MILLIMETERS			

ALL RIGHTS RESERVED. NO PORTION OF THIS PUBLICATION, WHETHER IN WHOLE OR IN PART CAN BE REPRODUCED WITHOUT THE EXPRESS WRITTEN CONSENT OF SPC TECHNOLOGY. DISCLAIMER: ALL STATEMENTS AND TECHNICAL INFORMATION CONTAINED HEREIN ARE BASED UPON INFORMATION AND/OR TESTS WE BELIEVE TO BE ACCURATE AND RELIABLE. SINCE CONDITIONS OF USE ARE BEYOND OUR CONTROL, THE USER SHALL DETERMINE THE SUITABILITY OF THE PRODUCT FOR THE INTENDED USE AND ASSUME ALL RISK AND LIABILITY WHATSOEVER IN CONNECTION THEREWITH.