

STAR-KNOBS

Modern illuminated tuning knobs

Our STAR-KNOBS are designed for menu driven interfaces, click rotation and click push-in for 'OK'. This reduces the number of knobs and controls required on the front panel. The illumination is a visual highlight and enhances user operation of the equipment.

- innovative design for flush fitting or surface mounting
- the flush-fitting version represents an attractive transition between the knob and the front of the device; the knob can be illuminated, that is, a ring lights up between the recess and the knob cover
- with the surface-mounted version, the knob design makes a great impression thanks to the slight inclination of the body towards the inner axis, thus allowing ergonomically comfortable operation; the knob is mounted on an approx. 3 mm high ring, which can be illuminated if required
- illumination possible with modern, energy-saving SMD LED technology for power supply units with 5 V: either white backlight for the colors diamond, ruby, emerald and sapphire or RGB backlight for individual colors as accessory
- knob with or without knurls
- cover with or without finger recess for fine adjustments
- tried and tested collet fixture system with secure fit on the axle
- max. torques: assembly = 1.5 Nm, function = 1.2 Nm

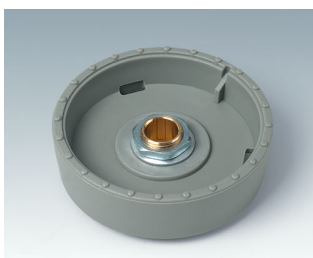
knob sizes boreholes

∅ 33 mm 6 mm, 1/4"

∅ 41 mm 6 mm, 8 mm

Minimum Components for 1 STAR-KNOB:

1 knob, 1 cover, 1 assembly kit



STAR-KNOBS

Applications and Examples

For rotary potentiometers or rotary pulse generators with round shaft ends in accordance with DIN 41591, including touch function.

- Measuring and control technology
- Health Care
- Heating and air conditioning
- Communication devices
- Building management
- Smart Factory



Control unit for photovoltaic solar installations



Heater for blood, blood substitutes and infusion solutions



Multiple analytical resonance system

View Customizing Options

What do you still need for your own very personal product? We can supply enclosures and tuning knobs with all necessary modifications for fitting your electronic components. Customizing options for Star-Knobs



Machining



Lacquering



Printing

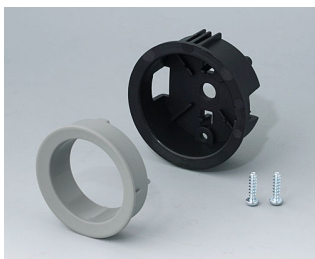


Laser marking



Installation / Assembly of accessories

Select Versions



B8733118
Assembly kit 33, flush fitting version
PA 6
volcano



B8733119
Assembly kit 33, flush fitting version
PA 6
nero



B8733201
Assembly kit 33, surface-mounted version
PC (UL 94 HB)
diamond



B8733203
Assembly kit 33, surface-mounted version
PC (UL 94 HB)
ruby

STAR-KNOBS



B8733205
 Assembly kit 33, surface-mounted version
 PC (UL 94 HB)
 emerald



B8733206
 Assembly kit 33, surface-mounted version
 PC (UL 94 HB)
 sapphire



B8733218
 Assembly kit 33, surface-mounted version
 PA 6
 volcano



B8733219
 Assembly kit 33, surface-mounted version
 PA 6
 nero



B8741118
 Assembly kit 41, flush fitting version
 PA 6
 volcano



B8741119
 Assembly kit 41, flush fitting version
 PA 6
 nero



B8741201
 Assembly kit 41, surface-mounted version
 PC (UL 94 HB)
 diamond



B8741203
 Assembly kit 41, surface-mounted version
 PC (UL 94 HB)
 ruby



B8741205
 Assembly kit 41, surface-mounted version
 PC (UL 94 HB)
 emerald



B8741206
 Assembly kit 41, surface-mounted version
 PC (UL 94 HB)
 sapphire



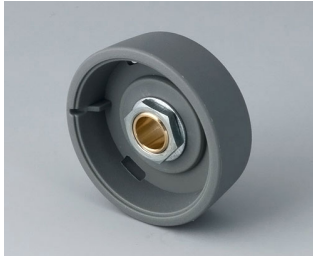
B8741218
 Assembly kit 41, surface-mounted version
 PA 6
 volcano



B8741219
 Assembly kit 41, surface-mounted version
 PA 6
 nero

STAR-KNOBS

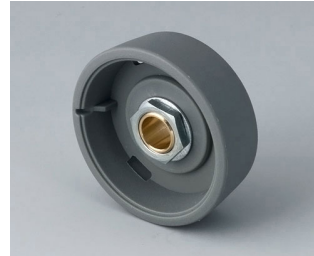
System components to complete



B8033068
STAR-KNOBS 33
PA 6
volcano
33x14mm 6mm



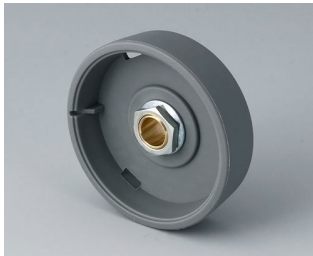
B8033069
STAR-KNOBS 33
PA 6
nero
33x14mm 6mm



B8033638
STAR-KNOBS 33
PA 6
volcano
33x14mm 1/4"



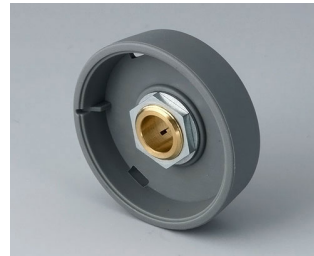
B8033639
STAR-KNOBS 33
PA 6
nero
33x14mm 1/4"



B8041068
STAR-KNOBS 41
PA 6
volcano
41x14mm 6mm



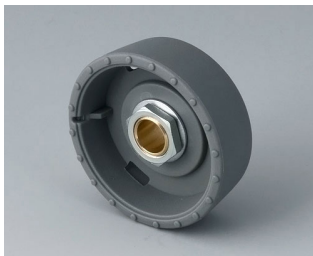
B8041069
STAR-KNOBS 41
PA 6
nero
41x14mm 6mm



B8041088
STAR-KNOBS 41
PA 6
volcano
41x14mm 8mm



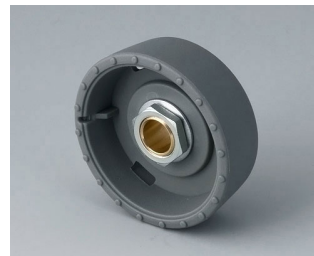
B8041089
STAR-KNOBS 41
PA 6
nero
41x14mm 8mm



B8133068
STAR-KNOBS 33, with knurls
PA 6
volcano
33x14mm 6mm



B8133069
STAR-KNOBS 33, with knurls
PA 6
nero
33x14mm 6mm



B8133638
STAR-KNOBS 33, with knurls
PA 6
volcano
33x14mm 1/4"



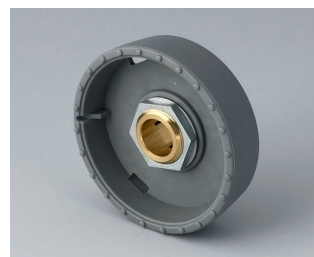
B8133639
STAR-KNOBS 33, with knurls
PA 6
nero
33x14mm 1/4"



B8141068
STAR-KNOBS 41, with knurls
PA 6
volcano
41x14mm 6mm



B8141069
STAR-KNOBS 41, with knurls
PA 6
nero
41x14mm 6mm



B8141088
STAR-KNOBS 41, with knurls
PA 6
volcano
41x14mm 8mm



B8141089
STAR-KNOBS 41, with knurls
PA 6
nero
41x14mm 8mm

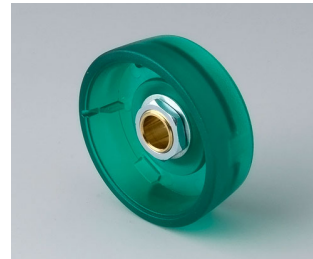
STAR-KNOBS



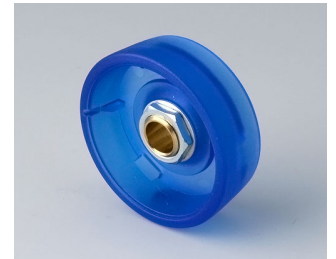
B8233061
 STAR-KNOBS 33
 PC (UL 94 HB)
 diamond
 33x14mm 6mm



B8233063
 STAR-KNOBS 33
 PC (UL 94 HB)
 ruby
 33x14mm 6mm



B8233065
 STAR-KNOBS 33
 PC (UL 94 HB)
 emerald
 33x14mm 6mm



B8233066
 STAR-KNOBS 33
 PC (UL 94 HB)
 sapphire
 33x14mm 6mm



B8233631
 STAR-KNOBS 33
 PC (UL 94 HB)
 diamond
 33x14mm 1/4"



B8233633
 STAR-KNOBS 33
 PC (UL 94 HB)
 ruby
 33x14mm 1/4"



B8233635
 STAR-KNOBS 33
 PC (UL 94 HB)
 emerald
 33x14mm 1/4"



B8233636
 STAR-KNOBS 33
 PC (UL 94 HB)
 sapphire
 33x14mm 1/4"



B8241061
 STAR-KNOBS 41
 PC (UL 94 HB)
 diamond
 41x14mm 6mm



B8241063
 STAR-KNOBS 41
 PC (UL 94 HB)
 ruby
 41x14mm 6mm



B8241065
 STAR-KNOBS 41
 PC (UL 94 HB)
 emerald
 41x14mm 6mm



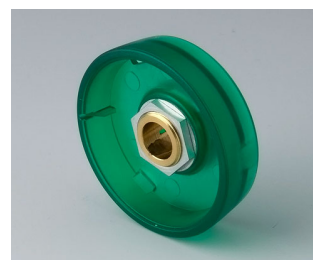
B8241066
 STAR-KNOBS 41
 PC (UL 94 HB)
 sapphire
 41x14mm 6mm



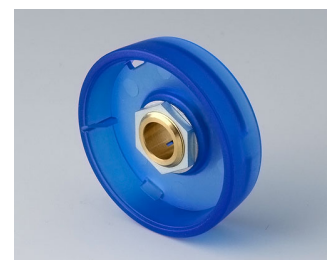
B8241081
 STAR-KNOBS 41
 PC (UL 94 HB)
 diamond
 41x14mm 8mm



B8241083
 STAR-KNOBS 41
 PC (UL 94 HB)
 ruby
 41x14mm 8mm



B8241085
 STAR-KNOBS 41
 PC (UL 94 HB)
 emerald
 41x14mm 8mm



B8241086
 STAR-KNOBS 41
 PC (UL 94 HB)
 sapphire
 41x14mm 8mm

STAR-KNOBS



B8333061
 STAR-KNOBS 33, with knurls
 PC (UL 94 HB)
 diamond
 33x14mm 6mm



B8333063
 STAR-KNOBS 33, with knurls
 PC (UL 94 HB)
 ruby
 33x14mm 6mm



B8333065
 STAR-KNOBS 33, with knurls
 PC (UL 94 HB)
 emerald
 33x14mm 6mm



B8333066
 STAR-KNOBS 33, with knurls
 PC (UL 94 HB)
 sapphire
 33x14mm 6mm



B8333631
 STAR-KNOBS 33, with knurls
 PC (UL 94 HB)
 diamond
 33x14mm 1/4"



B8333633
 STAR-KNOBS 33, with knurls
 PC (UL 94 HB)
 ruby
 33x14mm 1/4"



B8333635
 STAR-KNOBS 33, with knurls
 PC (UL 94 HB)
 emerald
 33x14mm 1/4"



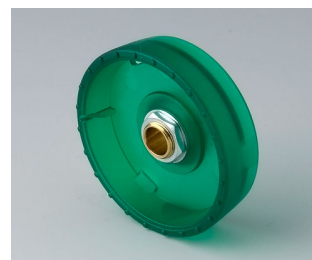
B8333636
 STAR-KNOBS 33, with knurls
 PC (UL 94 HB)
 sapphire
 33x14mm 1/4"



B8341061
 STAR-KNOBS 41, with knurls
 PC (UL 94 HB)
 diamond
 41x14mm 6mm



B8341063
 STAR-KNOBS 41, with knurls
 PC (UL 94 HB)
 ruby
 41x14mm 6mm



B8341065
 STAR-KNOBS 41, with knurls
 PC (UL 94 HB)
 emerald
 41x14mm 6mm



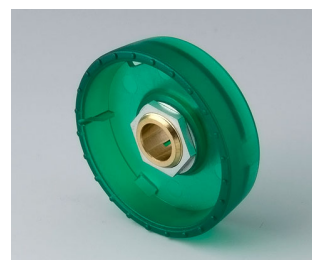
B8341066
 STAR-KNOBS 41, with knurls
 PC (UL 94 HB)
 sapphire
 41x14mm 6mm



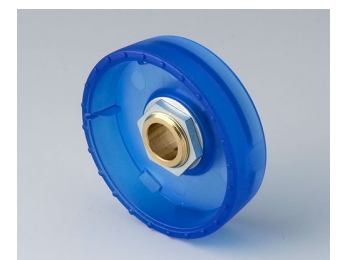
B8341081
 STAR-KNOBS 41, with knurls
 PC (UL 94 HB)
 diamond
 41x14mm 8mm



B8341083
 STAR-KNOBS 41, with knurls
 PC (UL 94 HB)
 ruby
 41x14mm 8mm



B8341085
 STAR-KNOBS 41, with knurls
 PC (UL 94 HB)
 emerald
 41x14mm 8mm



B8341086
 STAR-KNOBS 41, with knurls
 PC (UL 94 HB)
 sapphire
 41x14mm 8mm

STAR-KNOBS



B8633008
 Cover 33
 PA 6
 volcano



B8633009
 Cover 33
 PA 6
 nero



B8633108
 Cover 33, with finger recess
 PA 6
 volcano



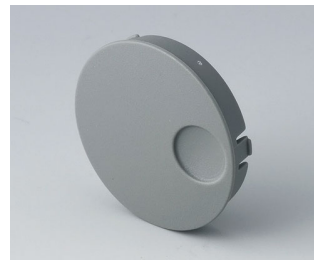
B8633109
 Cover 33, with finger recess
 PA 6
 nero



B8641008
 Cover 41
 PA 6
 volcano



B8641009
 Cover 41
 PA 6
 nero



B8641108
 Cover 41, with finger recess
 PA 6
 volcano

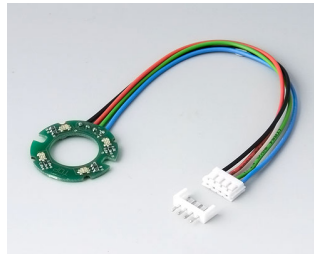


B8641109
 Cover 41, with finger recess
 PA 6
 nero

Accessory "illumination"



B8733000
 LED illumination



B8733002
 LED illumination (RGB backlight)

Accessory



A6207009
 Round nut M7 x 0.75



A6210009
 Round nut M10 x 0.75



A6295009
 Round nut 3/8"-32G



A6300000
 Spanner

STAR-KNOBS



B8733001
Assembly support 33
ABS (UL 94 HB)
green



B8741001
Assembly support 41
ABS (UL 94 HB)
green

Subject to technical modification without notice. © by OKW Gehäusesysteme, Buchen/Germany.