

18x16x08 Inch Weatherproof Enclosure with Power Saver Solid State Fan Controller Model: NB181608-10FSX

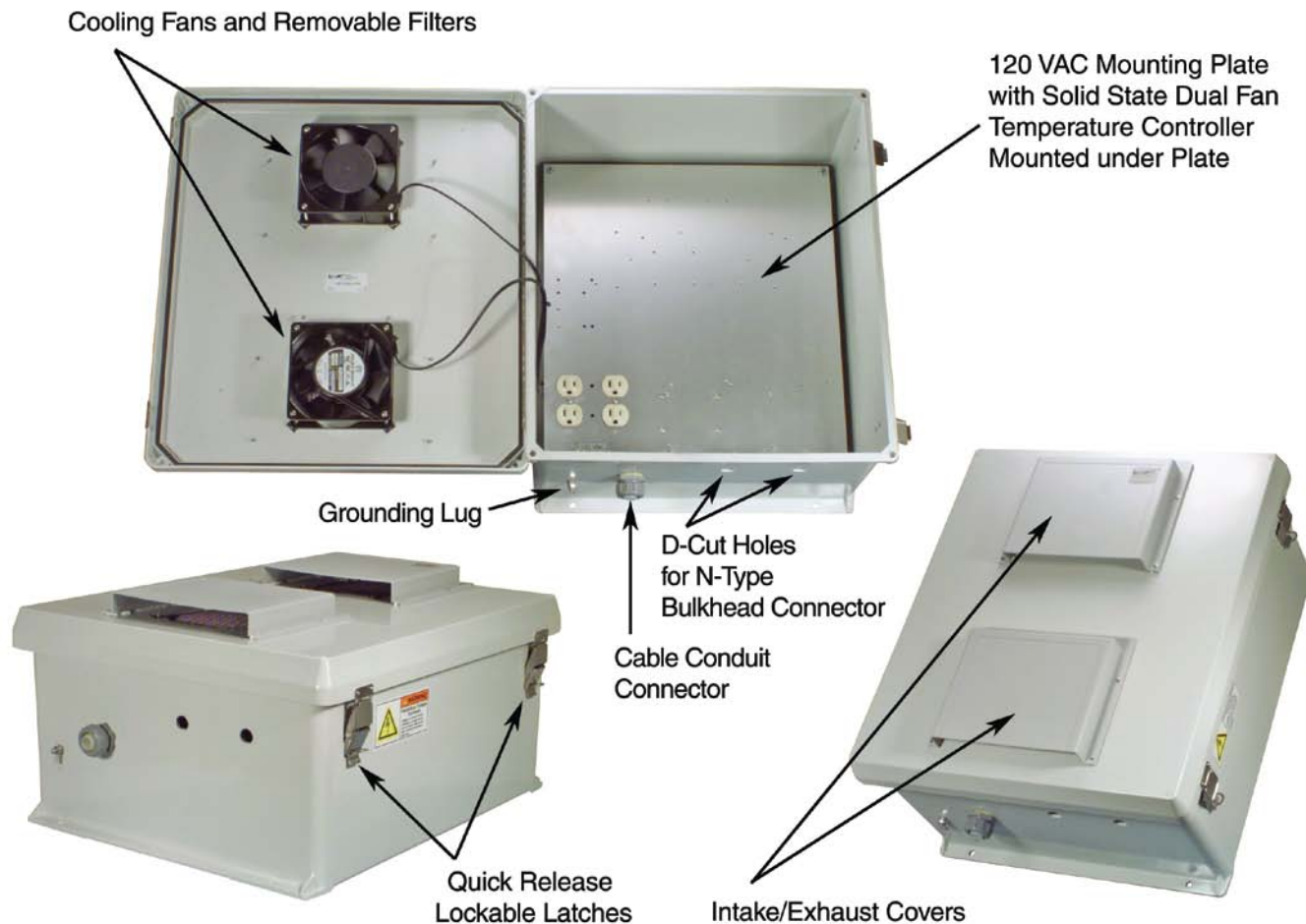
Applications and Features

Features:

- Molded Fiberglass Reinforced Polyester (FRP) industrial Enclosure
- Stainless steel quick release latches with padlock hasps
- NEMA Type 3R, 3RX / IP24 rated
- Fully gasketed raised Vented lid with removable filters & integral mounting flange
- Features aluminum mounting plate with surge protected duplex 120 VAC outlets & Solid State Controlled Cooling System
- **Power Saver Version: Dual-Fan Control, each fan set to different temperature settings**

Applications:

- Remote Wireless LAN WiFi equipment installations
- Indoor and outdoor installations
- Rapid Deployment Installations
- Corrosive environments & hotspot applications
- Protection of equipment from theft or damage



Product Description

Start with the Box...

The NB181608-10FSX is designed to protect sensitive equipment from the elements and supply it with proper airflow. The unit features two high flow 120 VAC fans featuring ball bearings. The fans are independently controlled by HyperLink's exclusive twin fan Solid State temperature controller to minimize power consumption and noise. The unit features provisions for connecting AC power, data or RF cables to the enclosure. Additional holes can be added to the enclosure for custom orders.

The Enclosure is a rugged weatherproof design that is ideal for both indoor and outdoor applications. Constructed from molded fiberglass reinforced polyester, it is well suited for wide temperature extremes or installations subjected to driven rain or snow. The integral mounting flange allows mounting on any flat surface. When used with its optional mounting brackets, the unit can mount to a pole or column. The raised lid features a continuous stainless steel hinge and quick release stainless steel latches with padlock hasps. The raised lid features a full gasket to block water intrusion. The enclosure material is UV stabilized and comes in machine tool gray.

Mounting Plate

The aluminum plate features a large unobstructed area to mount equipment. Standard are four 120 VAC outlets to power internal equipment. A convenient terminal strip provides a point to connect the AC line. The mounting plate also has provisions to mount WLAN equipment from Cisco®, Symbol®, D-Link®, HyperLink and more. With the optional HGX-AMOUNT02 bracket, a wide array of HyperLink Power-Over-Ethernet (PoE) products and Power Supplies can be mounted as well. Two of these brackets can be mounted side by side. Also available is the HGX-NMOUNT03 Universal Mounting Shelf that can be attached to the mounting plate and can accommodate additional equipment to be placed in the enclosure.

Lightning Protection

Surge protection is provided as a standard feature on the internal AC outlets. In addition, the unit can accept up to two optional bulkhead-mount N-Type lightning protectors to protect the coaxial cable runs. Additional N-Type lightning protectors can be added on custom orders. Mounted to the optional HGX-AMOUNT02 bracket, the HGLN-CAT5 lightning protector can be used with Power-over-Ethernet applications.

Enclosure with Dual Fan Solid State Controller

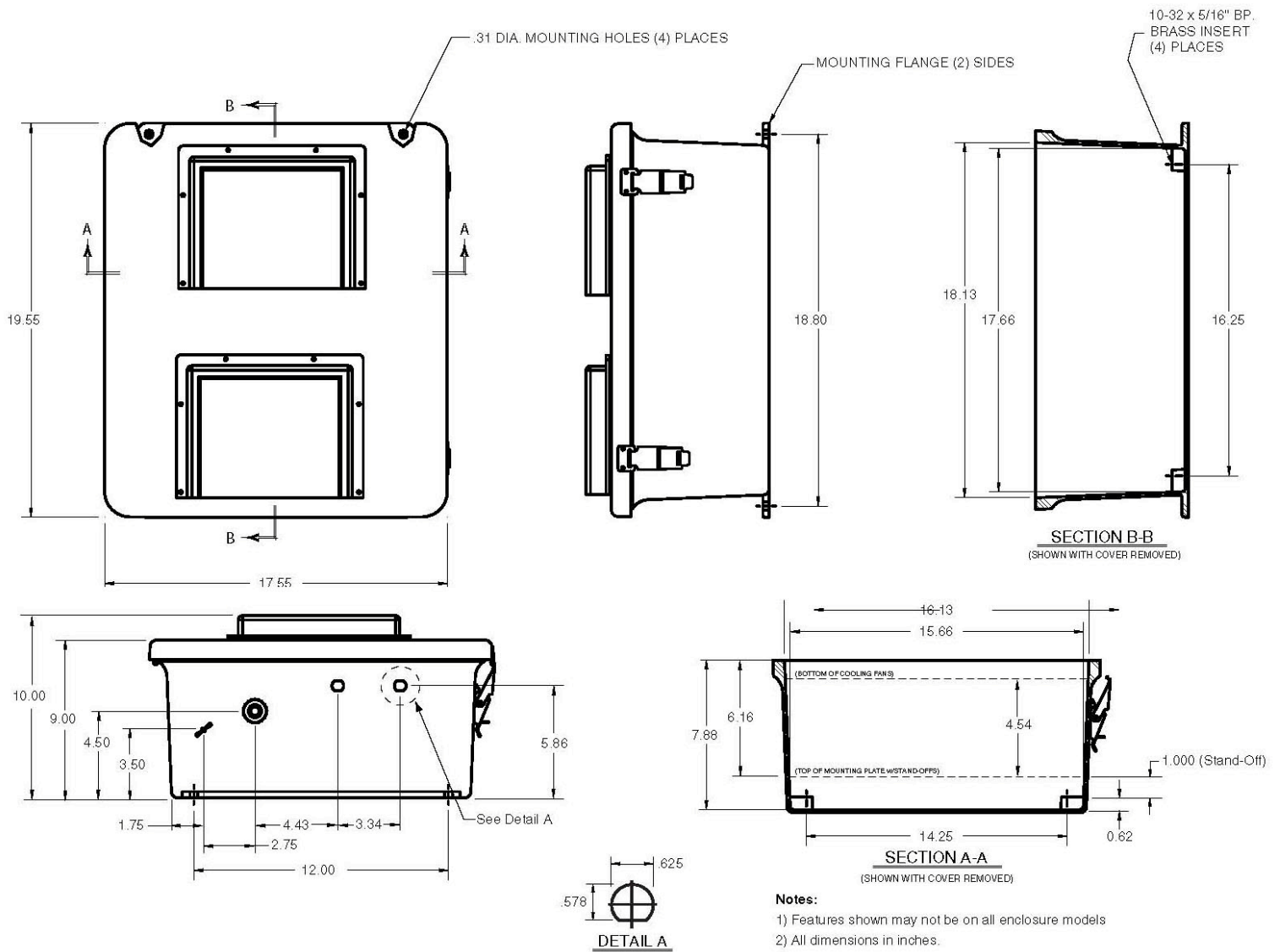
The NB181608-10FSX comes with two independently controlled 120 VAC cooling fans installed. The fans are controlled by HyperLink's exclusive dual fan Solid State Controller. The top fan has a turn-on temperature of +90° F (+32° C). If the temperature continues to climb to +100° F (+37.8° C), the lower fan turns on. When the temperature drops back to +91° F (+32.7° C), the lower fan turns off. When the temperature drops to +81° F (+27.2° C), the top fan turns off. (A minimum order quantity is required for custom fan setpoints and other configurations.)

The dual fan design offers inherent redundancy. The Solid State Controller features improved temperature set-point accuracy and can be factory modified for other temperature set-points. The fans are controlled by integral Solid State AC relays. The relays feature Zero Cross Detection for EMI reduction. No extra room for the controller is required since it is mounted underneath the plate.

Specifications

Enclosure Material	Fiberglass Reinforced Polyester
Enclosure Color	Machine Tool Gray
Voltage	120 VAC
Fan Power	12 Watts each (24 Watts total)
Mounting Plate Material	.10 in. (2.5mm) Thick Anodized Aluminum
Mounting Plate Dimensions	16.8 x 14.8 inches (42.6 x 37.5 cm)
Weight	20.3 lbs (9.2 kg)
Outside Dimensions (max)	19.5 x 17.5 x 10 inches (49.5 x 44.4 x 25.4 cm)
Inside Dimensions	17.7 x 15.7 x 8.5 inches (44.9 x 39.9 x 21.6 cm)
Flame Rating	UL 94-5V
Cable Feed	1/2" Cable Conduit Connector
RoHS Compliant	Yes
Ratings*	NEMA Type 3R, 3RX / IP24
Temperature Controller Specification	
Top/Bottom Fan Setpoint Temperature	+32° C (+90° F) top & +37.8° C (+100 F°) bottom
Hysteresis Window	5° C (9° F)

Enclosure Dimensions



Mounting Plate Details

