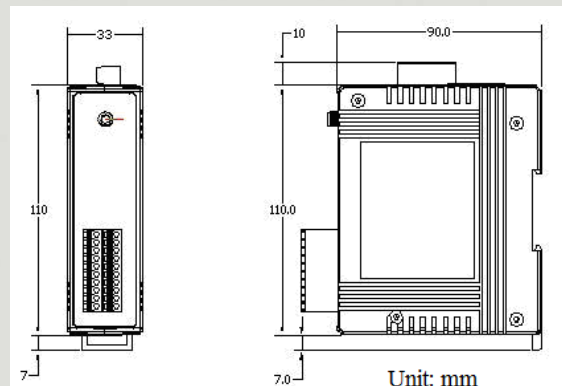




Wi-Fi Data Acquisition I/O Module (8DI / 8DO)



WF-2055

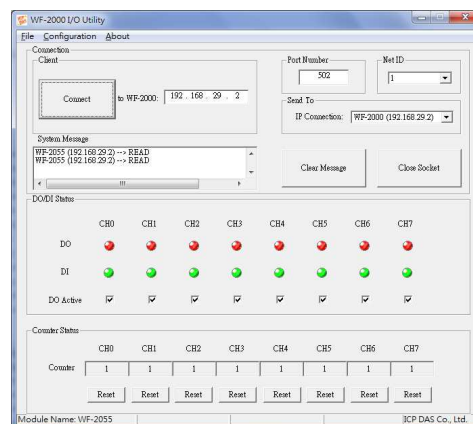


Dimensions

The WF-2055 is an 8-channel isolated digital input with 32-bit counters and 8-channel sink type isolated digital output module and it is one of the members of the WF-2000 wireless product family. In addition, the WF-2055 has WLAN connection complies with the IEEE802.11b/g standards. With the popularity of 802.11 network infrastructure, the WF-2055 makes an easy way to incorporate wireless connectivity into monitoring and control systems. The WF-2055 also supports Modbus/TCP and UDP protocols and the network encryption configuration, which makes perfect integration to SCADA software and offer easy and safe access for users from anytime and anywhere.

Features

- Support sink type digital outputs
- Support sink / source type digital inputs
- Compatible with IEEE 802.11b/g standards
- Support infrastructure and ad hoc modes for wireless networks
- Support WEP, WPA and WPA2 wireless encryption
- Support Modbus/TCP and UDP protocols
- Support pair connection mode
- Support DO power on value & safe value Mechanism
- Built-in Watchdog



Utility Features

WF-2000 I/O Utility provides a simple way to easily test and instant acquire data for all ICP DAS Wi-Fi I/O series modules without programming

- Easily and quickly configure and test Wi-Fi I/O modules
- Provide I/O monitor screen
- Provide parameter storage interface
- Provide encryption configuration for wireless LAN

Wire Connection

Input	ON	OFF
Relay Contact (Dry)	Relay Close	Relay Open
Open Collector (Dry)	ON	OFF
Relay Contact (Wet)	Relay Close	Relay Open
NPN Output (Wet)	ON	OFF
Output	ON	OFF
Drive Relay		
Resistance Load		

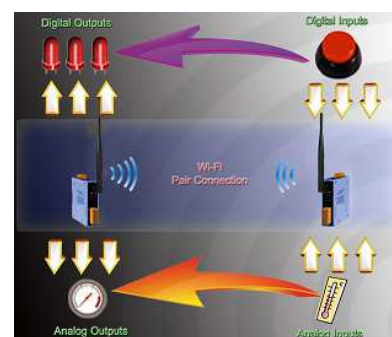
Hardware Specifications

Digital Input		
Channels		8
Input Type		Dry Contact: Source, Wet Contact: Sink / Source
Dry Contact Level		Off Voltage Level: OpenOn Voltage Level: Close to GND
Wet Contact Level		Off Voltage Level: +4V max.On Voltage Level: +10 V ~ +50 V
Counters	Channels	8
	Max. Counts	32-bit (4294967295)
	Max. Input Frequency	10K Hz
Photo-Isolation		3750 VDC
Digital Output		
Channels		8, Sink(NPN)
Output Voltage		+3.5 ~ +50 V
Output Current		700mA per channel
Intra-module Isolation, Field to Logic		3750 VDC
Overvoltage Protection		60 VDC
Wi-Fi Interface		
Antenna		5 dBi (Omni-Directional)
Standard Supported		IEEE 802.11b/g
Wireless Mode		Infrastructure & Ad-hoc
Encryption		WEP, WPA and WPA2
Transmission Range		100 meters (LOS)
Power		
Input Voltage Range		10V ~ 30V
Power Consumption		1.9W
Mechanism		
Installation		DIN-Rail
Dimensions		110mm x 90mm x 33mm (H x W x D)
Environment		
Operating Temperature		-25℃ ~ +75℃
Storage Temperature		-30℃ ~ +80℃
Humidity		10% ~ 90%

Applications



Connection architecture



I/O Pair Connection

Ordering Information

WF-2055 CR

Wi-Fi I/O Module with 8-channel Isolated Digital Input and 8-channel Sink Type Isolated Digital Output (RoHS)