



HP15-36-P1P

4.6 m | 15 ft High Performance Parabolic Shielded Antenna, single-polarized, 3.600–4.200 GHz, CPR229G, gray antenna, standard white radome with flash, non-standard pack—two-piece reflector

General Specifications

| | |
|------------------------|--|
| Antenna Type | HP - High Performance Parabolic Shielded Antenna, single-polarized |
| Diameter, nominal | 4.6 m 15 ft |
| Packing | Non-standard pack |
| Radome Color | White |
| Radome Material | Standard |
| Reflector Construction | Two-piece reflector |
| Antenna Input | CPR229G |
| Antenna Color | Gray |
| Antenna Type | HP - High Performance Parabolic Shielded Antenna, single-polarized |
| Diameter, nominal | 4.6 m 15 ft |
| Flash Included | Yes |
| Polarization | Single |

Electrical Specifications

| | |
|--------------------------|-------------------|
| Operating Frequency Band | 3.600 – 4.200 GHz |
| Electrical Compliance | ETSI Class 2 |
| Operating Frequency Band | 3.600 – 4.200 GHz |

Mechanical Specifications

| | |
|-------------------------------|--------------------|
| Fine Azimuth Adjustment | ±5° |
| Fine Elevation Adjustment | ±3.6° |
| Mounting Pipe Diameter | 115 mm 4.5 in |
| Net Weight | 499 kg 1100 lb |
| Side Struts, Included | 1 inboard |
| Side Struts, Optional | 2 outboard |
| Wind Velocity Operational | 110 km/h 68 mph |
| Wind Velocity Survival Rating | 200 km/h 124 mph |

Wind Forces At Wind Velocity Survival Rating

| | |
|-----------------------------|--------------------|
| Angle α for MT Max | 110 ° |
| Axial Force (FA) | 39672 N 8919 lbf |
| Force on Inboard Strut Side | 35233 N 7921 lbf |
| Side Force (FS) | 19652 N 4418 lbf |

Product Specifications

HP15-36-P1P



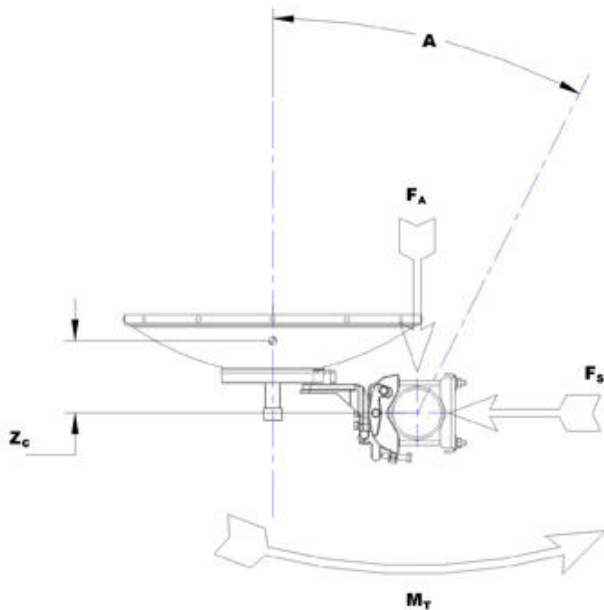
| | |
|---------------------------------------|------------------|
| Twisting Moment (MT) | 29828 N•m |
| Weight with 1/2 in (12 mm) Radial Ice | 952 kg 2099 lb |
| Zcg with 1/2 in (12 mm) Radial Ice | 1372 mm 54 in |
| Zcg without Ice | 1306 mm 51 in |

HP15-36-P1P

POWERED BY



Wind Forces At Wind Velocity Survival Rating Image



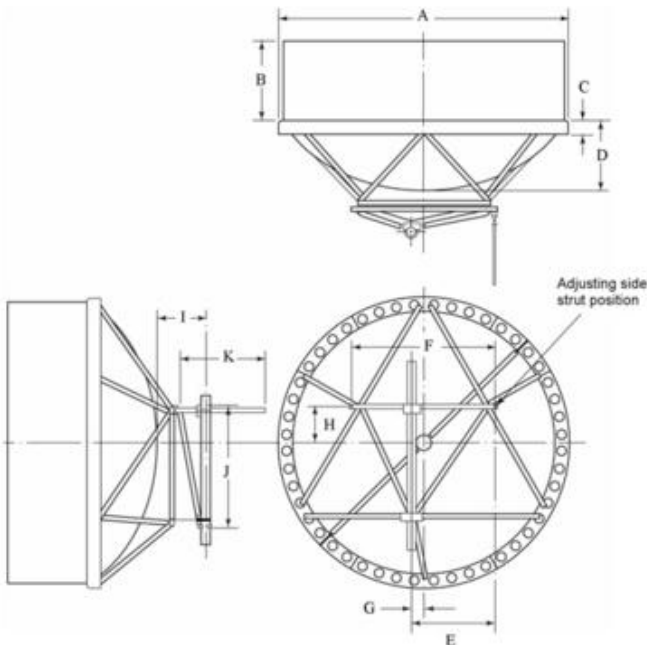
Packed Dimensions

Note Non-standard packing option—contact 1-800-255-1479 (North America), 1-800-873-2307 (International), or an Andrew representative

HP15-36-P1P



Antenna Dimensions And Mounting Information



| ANTENNA DIMENSIONS | | | |
|-------------------------------|--------------|---|-------------|
| All dimensions in mm (inches) | | | |
| A | 4685 (184.5) | G | 200 (8) |
| B | 1245 (49.0) | H | 595 (23.5) |
| C | 135 (5.3) | I | 595 (23.5) |
| D | 865 (34.0) | J | 1930 (76.0) |
| E | 1310 (51.5) | K | 1240 (108) |
| F | 2210 (87) | | |

Regulatory Compliance/Certifications

| Agency | Classification |
|---------------|--|
| ISO 9001:2008 | Designed, manufactured and/or distributed under this quality management system |

* Footnotes

| | |
|--------------------------|---|
| Axial Force (FA) | Maximum forces exerted on a supporting structure as a result of wind from the most critical direction for this parameter. The individual maximums specified may not occur simultaneously. All forces are referenced to the mounting pipe. |
| Operating Frequency Band | Bands correspond with CCIR recommendations or common allocations used throughout the world. Other ranges can be accommodated on special order. |
| Packing | Andrew standard packing is suitable for export. Antennas are shipped as standard in totally recyclable cardboard or wire-bound crates (dependent on product). For your convenience, Andrew offers heavy duty export packing options. |
| Side Force (FS) | Maximum side force exerted on the mounting pipe as a result of wind from the most critical direction for this parameter. The individual maximums specified may not occur simultaneously. All forces are referenced to the mounting pipe. |
| Twisting Moment (MT) | Maximum forces exerted on a supporting structure as a result of wind from the most critical |

HP15-36-P1P

POWERED BY



direction for this parameter. The individual maximums specified may not occur simultaneously. All forces are referenced to the mounting pipe.

Wind Velocity Operational

The wind speed where the antenna deflection is equal to or less than 0.1 degrees. In the case of ValuLine antennas, it is defined as a maximum deflection of 0.3 x the 3 dB beam width of the antenna.

Wind Velocity Survival Rating

The maximum wind speed the antenna, including mounts and radomes, where applicable, will withstand without permanent deformation. Realignment may be required. This wind speed is applicable to antenna with the specified amount of radial ice.