

— WHEN REQUIRED, ADD SUFFIX LETTER "LF"
INDICATES THE PRODUCT IS RoHS
COMPATIBLE, SEE NOTE 7

— TOTAL NB OF POSITIONS, 8 TO 50

— PACKAGING TYPE, NOTE 3

1=0.76 μ m GOLD/GXT ON CONTACT AREA
3.81 μ m TIN-LEAD ON TAIL

4=3.81 μ m TIN-LEAD ON CONTACT AREA
AND ON TAIL

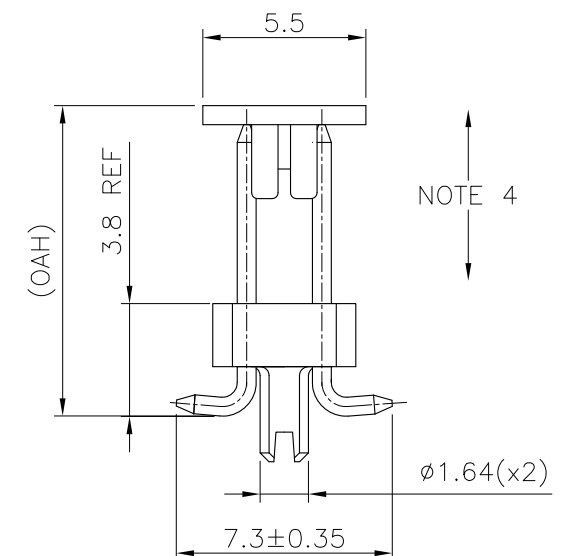
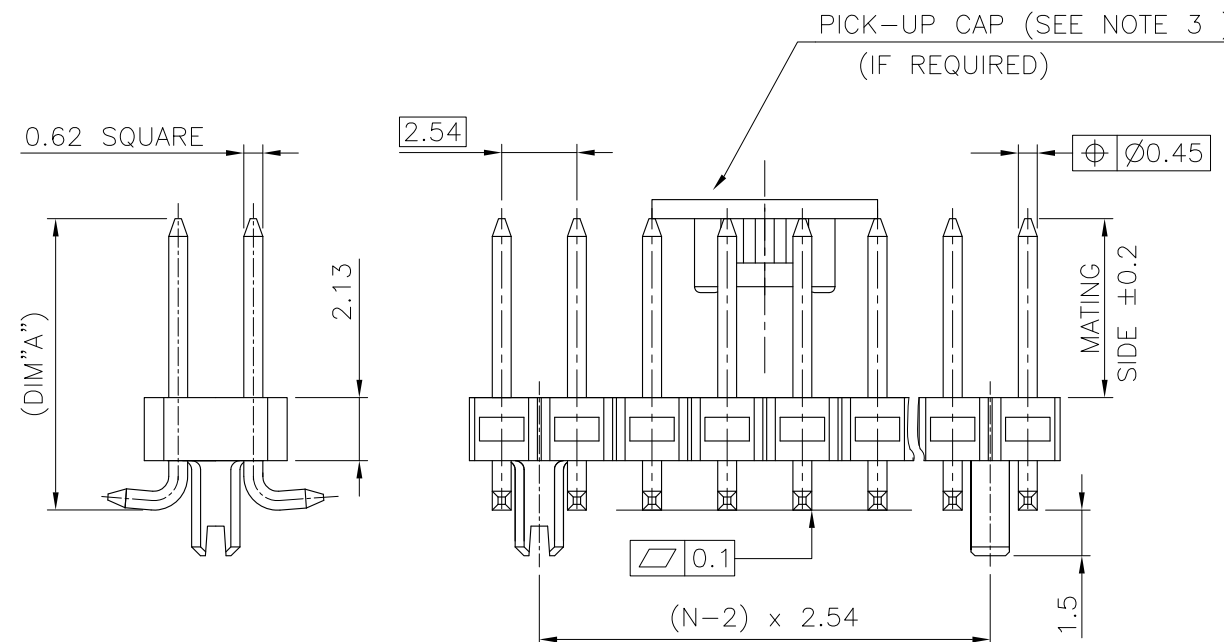
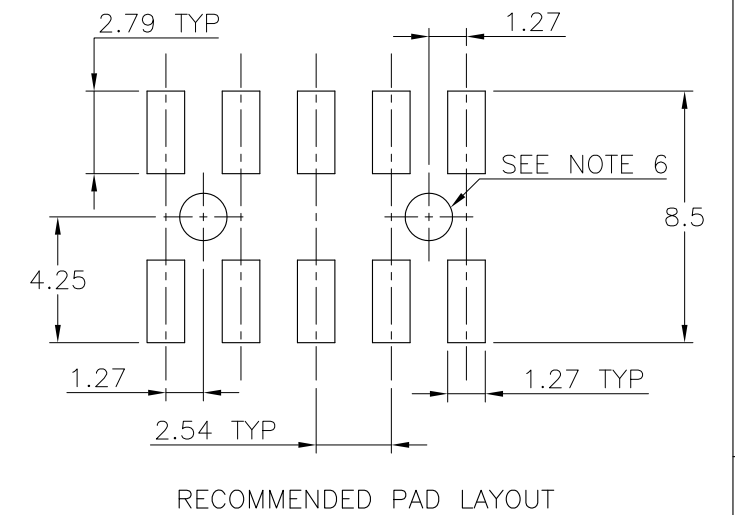
8=0.38 μ m GOLD/GXT ON CONTACT AREA
3.81 μ m TIN-LEAD ON TAIL

PIN STYLE	MATING	DIM"A"	OAH
01	5.84	9.6	10.2
02	8.08	11.8	12.4
03	13.00	16.8	17.4
06	10.50	14.3	14.9
07	14.50	18.3	18.9

NOTES:

1. HOUSING MAT'L : HIGH TEMPERATURE THERMOPLASTIC. UL94V-0 COLOR: BLACK
2. PIN MATERIAL : PHOSPHOR BRONZE
3. PACKAGING
 - = POLY BAGS
 - A = TAPE & REEL WITH PICK UP CAP
(SEE TA840 FOR PRODUCT AVAILABILITY)
 - TV = TUBE WITHOUT PICK UP CAP FOR VALEO
 - K = TARE & REEL WITHOUT PICK-UP CAP.
4. 9N MIN RETENTION IN EITHER DIRECTION
5. TO DETERMINE DIMENSIONS :
N = NUMBER OF POSITIONS PER ROW
EXAMPLE : 8 POS $N \times 2.54 = 20.32\text{mm}$
6. HOLE DIMENSION TO BE $\phi 1.6 \pm 0.03$ FOR INTERFERENCE FIT APPLICATIONS.
HOLE DIMENSIONS TO BE $\phi 1.95 \pm 0.05$ FOR LOCATION APPLICATION WITH AUTOMATIC PICK AND PLACE MACHINES.
7. RoHS COMPATIBLE PRODUCT SPECIFICATIONS

-
- Technical drawing of a multi-pin connector. The drawing shows a top-down view of a rectangular connector with multiple pins. The dimensions are as follows:
- Overall width: $N \times 2.54$ MAX
 - Pin pitch (distance between adjacent pins): $(N-1) \times 2.54$
 - Pin diameter: 2.54
 - Pin spacing (distance between the center of one pin and the center of the next pin): 1.145
 - Pin length (distance from the base of the pin to the tip): 7.62
 - Pin height (distance from the base of the pin to the top of the pin): 4.83

[illegible]

Mouser Electronics

Authorized Distributor

Click to View Pricing, Inventory, Delivery & Lifecycle Information:

FCI:

[98401-801-20LF](#)