

Parallel Style Air Gripper Standard Type/With Dust Cover

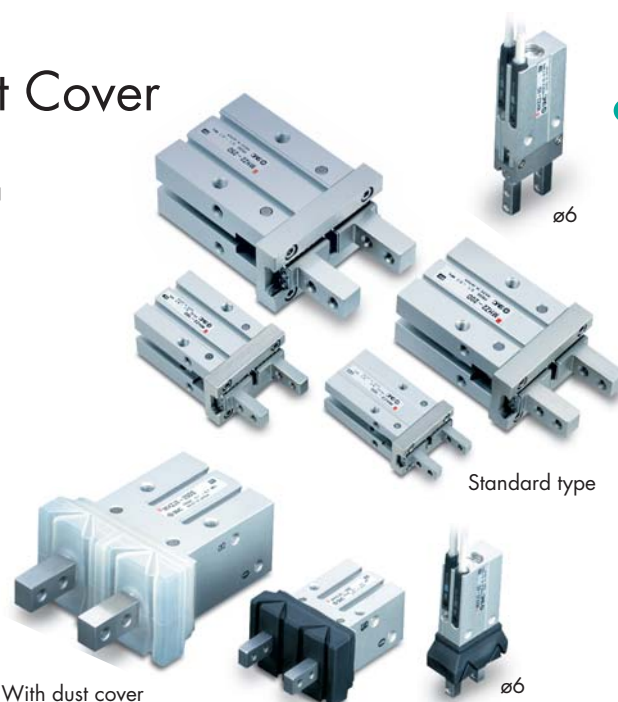
Series **MHZ2/MHZJ2**

Size MHZ2: 6, 10, 16, 20, 25, 32, 40

Size MHZJ2: 6, 10, 16, 20, 25

Features

- Autoswitches can be added.
- Single and double acting design.
- MHZ2: General purpose compact grippers with integral linear guide that provides high rigidity and high accuracy.
- MHZJ2: Air grippers with dust-protected and drip-proof construction. Interchangeable in mounting dimensions with the standard models.
A wider selection of dust cover materials is available to suit your application, please refer to Best Pneumatics catalogue.



Specifications

Fluid		Air
Operating pressure	Double acting	$\phi 6$: 0.15 to 0.7 MPa $\phi 10$: 0.2 to 0.7 MPa $\phi 16$ to $\phi 40$: 0.1 to 0.7 MPa
	Single acting	Normally open: $\phi 6$: 0.3 to 0.7 MPa $\phi 10$: 0.35 to 0.7 MPa Normally closed: $\phi 16$ to $\phi 40$: 0.25 to 0.7 MPa
Ambient and fluid temperature		-10 to 60°C
Repeatability		$\phi 6$ to $\phi 25$: ± 0.01 mm $\phi 32$, $\phi 40$: ± 0.02 mm
Max. operating frequency		$\phi 6$ to $\phi 25$: 180 c.p.m. $\phi 32$, $\phi 40$: 60 c.p.m.
Lubrication		Not required
Action		Double acting/Single acting
Auto switch (Option) ^{Note}		Solid state switch (3-wire, 2-wire)

How to Order

MHZ		2	—	16	D
Options				Bore size	
Nil	Standard			6	6mm
J	Dust Cover ($\phi 6$ to $\phi 25$) Chloroprene rubber, (CR)			10	10mm
				16	16mm
				20	20mm
				25	25mm
				32	32mm
				40	40mm
Number of fingers		2		2	2 fingers
Action					
D	Double acting				
S	Single acting (Normally open)				
C	Single acting (Normally closed)				

* Note) Further finger and body options available, refer to Best Pneumatics.

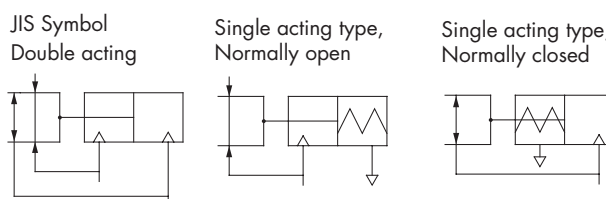
Auto Switch Specifications
Refer to switch section.

Model

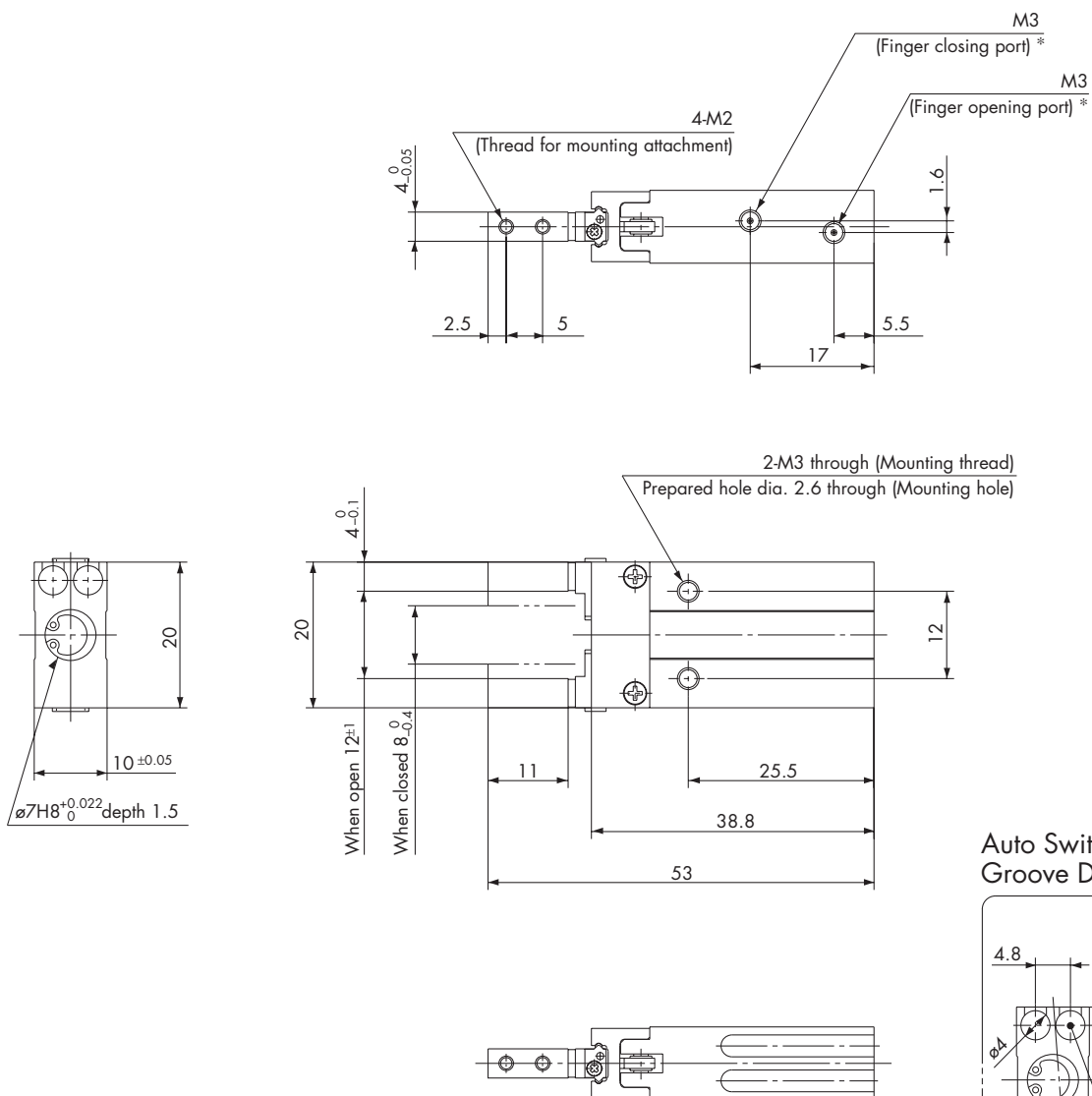
Action		Model	Bore size (mm)	Gripping force ⁽¹⁾		Opening/ Closing stroke (Both sides) (mm)
				Gripping force per finger Effective value (N)		
				External	Internal	
Double acting		MHZ□2-6D	6	3.3	6.1	4
		MHZ□2-10D	10	11	17	4
		MHZ□2-16D	16	34	45	6
		MHZ□2-20D	20	42	66	10
		MHZ□2-25D	25	65	104	14
		MHZ2-32D	32	158	193	22
		MHZ2-40D	40	254	318	30
Single acting	Normally open	MHZ□2-6S	6	1.9	—	4
		MHZ□2-10S	10	7.1		4
		MHZ□2-16S	16	27		6
		MHZ□2-20S	20	33		10
		MHZ□2-25S	25	45		14
		MHZ2-32S	32	131		22
		MHZ2-40S	40	217		30
	Normally closed	MHZ□2-6C	6	—	3.7	4
		MHZ□2-10C	10		13	4
		MHZ□2-16C	16		38	6
		MHZ□2-20C	20		57	10
		MHZ□2-25C	25		83	14
		MHZ2-32C	32		161	22
		MHZ2-40C	40		267	30

Note 1) Values based on pressure of 0.5 MPa, gripping point L = 20 mm, at center of stroke.

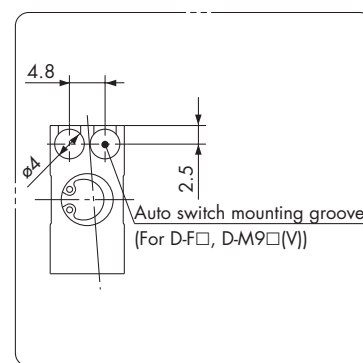
Note 2) Except auto switch.



Dimensions: MHZ2-6□ Double acting/Single acting. Basic type



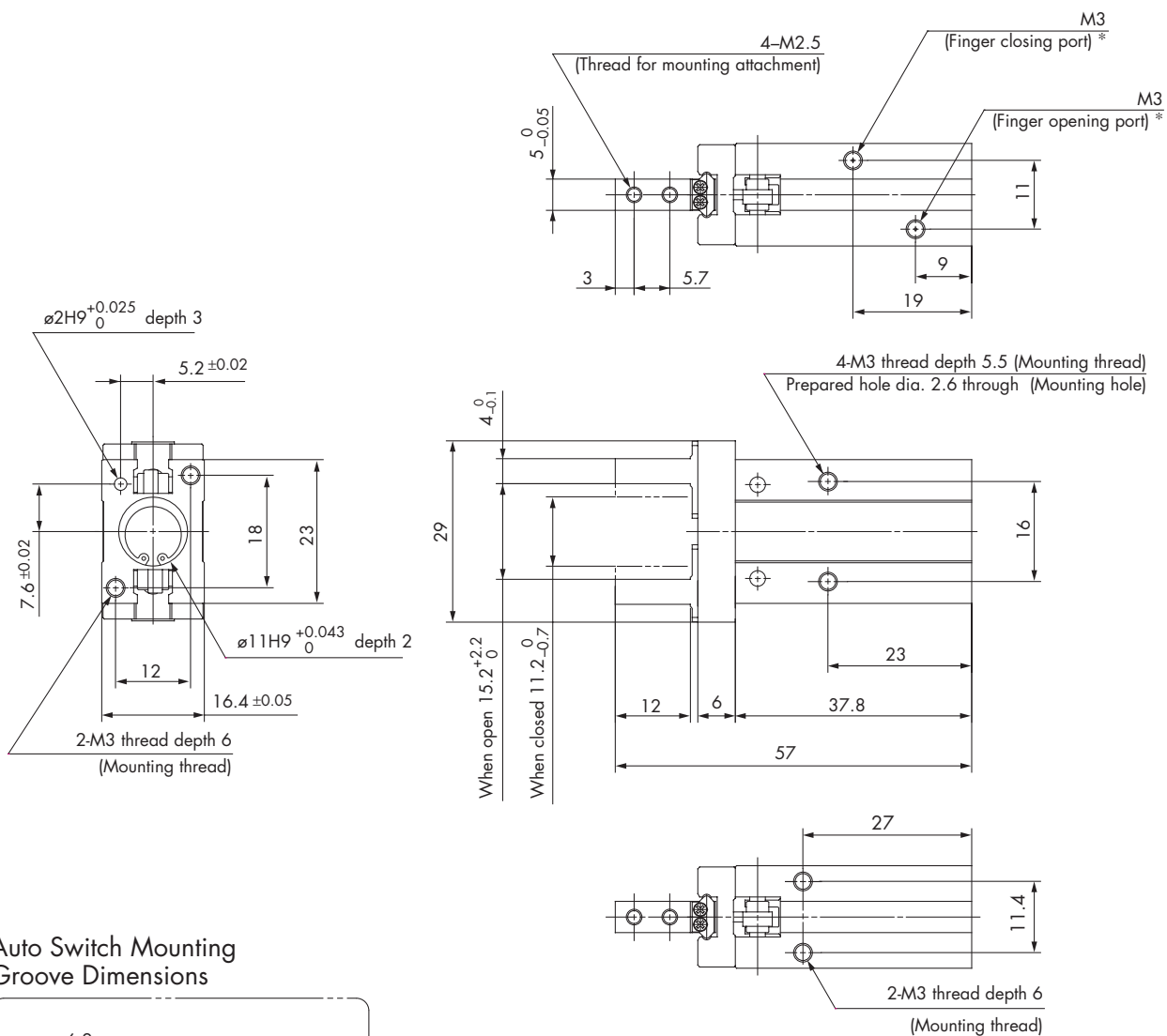
Auto Switch Mounting
Groove Dimensions



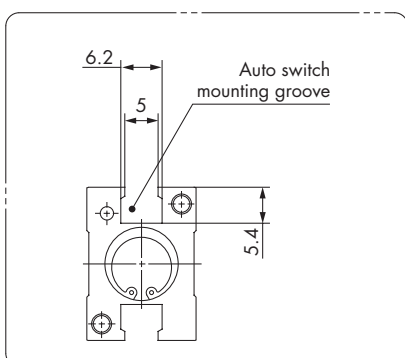
* For single action, the port on one side is a breathing hole.



Dimensions: MHZ2-10□ Double acting/Single acting. Basic type



Auto Switch Mounting Groove Dimensions

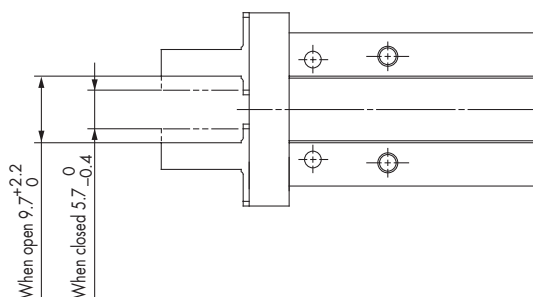


Note) When using D-Y59, D-Y69 and D-Y7 type auto switches, through-hole mounting is not possible.

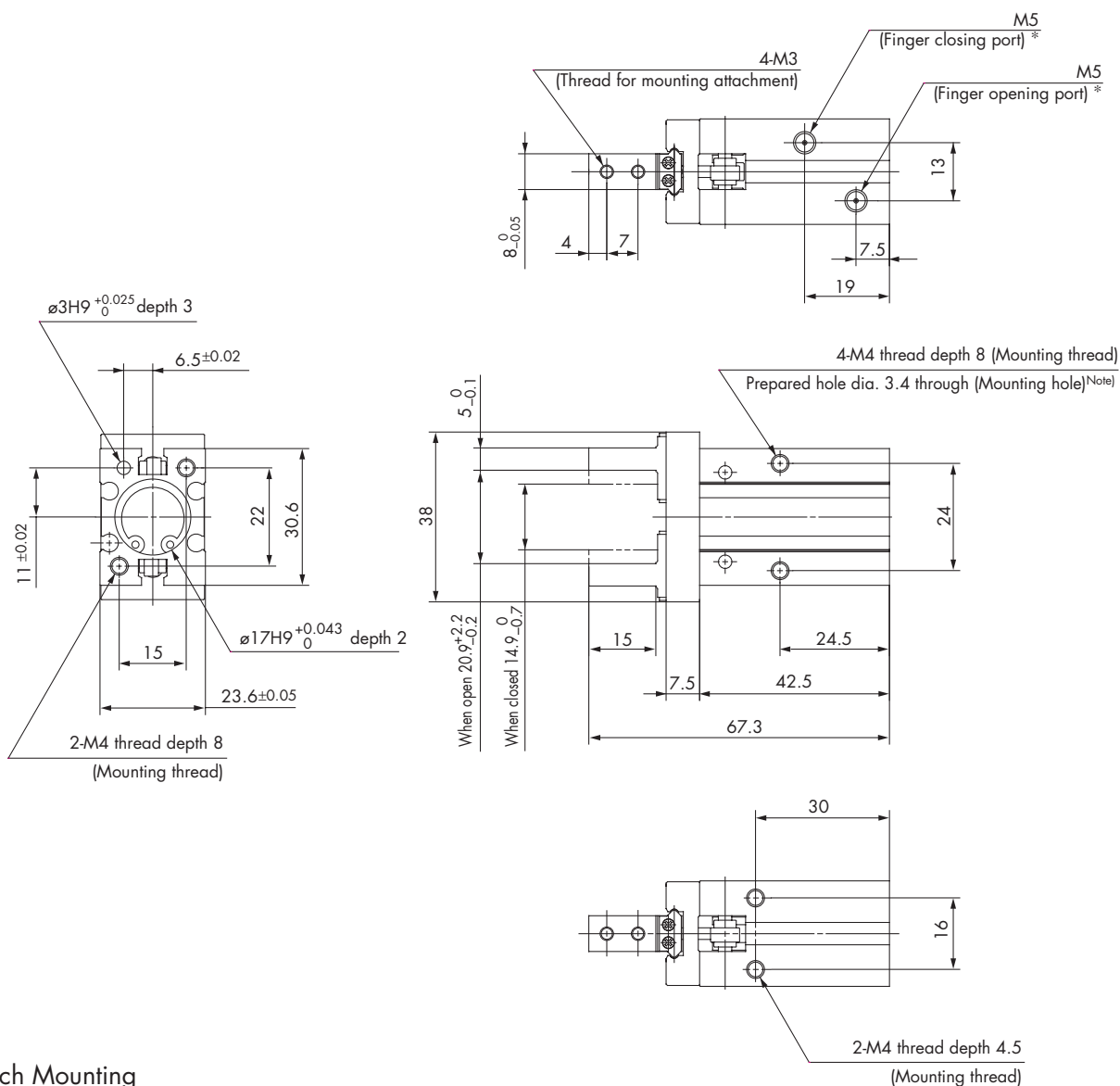
* For single action, the port on one side is a breathing hole.

Finger Position/Narrow Type

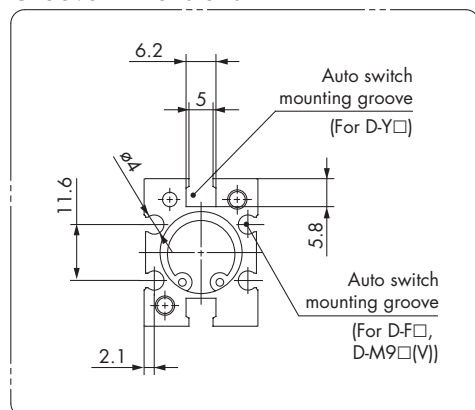
MHZ2-10□N



Dimensions: MHZ2-16□ Double acting/Single acting. Basic type



Auto Switch Mounting Groove Dimensions

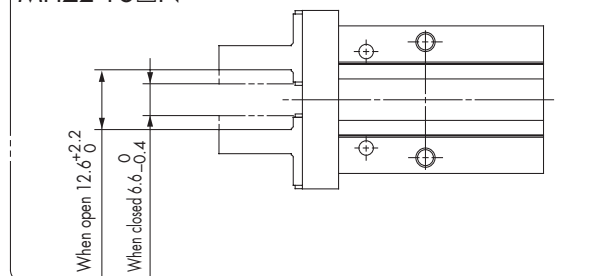


Note) When using D-Y59, D-Y69 and D-Y7 type auto switches, through-hole mounting is not possible.

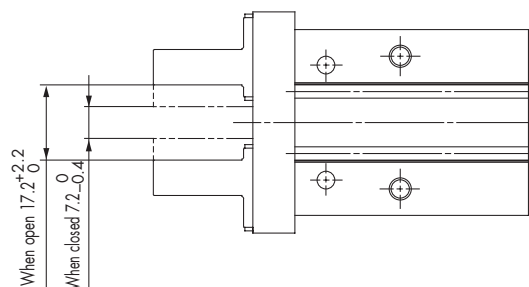
* For single action, the port on one side is a breathing hole.

Finger Position/Narrow Type

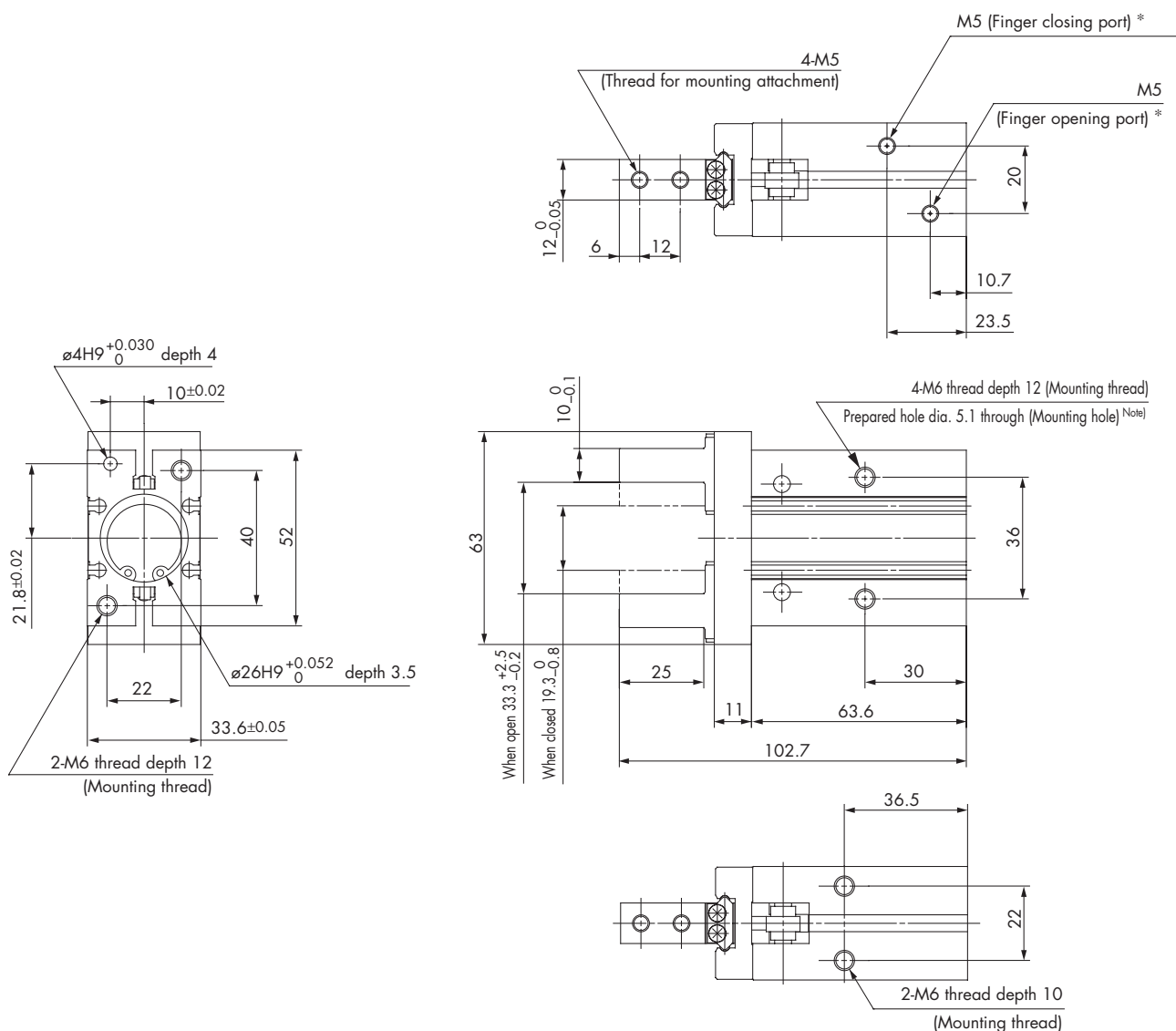
MHZ2-16□N



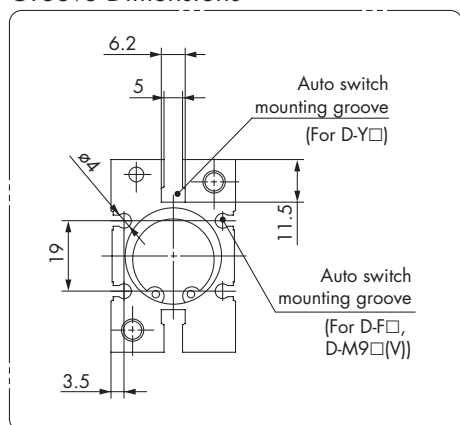
Grippers



Dimensions: MHZ2-25□ Double acting/Single acting. Basic type



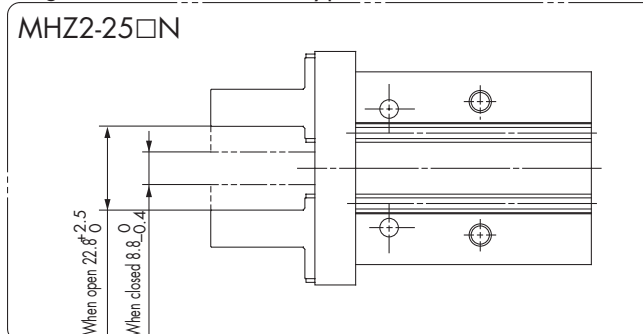
Auto Switch Mounting Groove Dimensions



Note) When using D-Y59, D-Y69 and D-Y7 type auto switches, through-hole mounting is not possible.

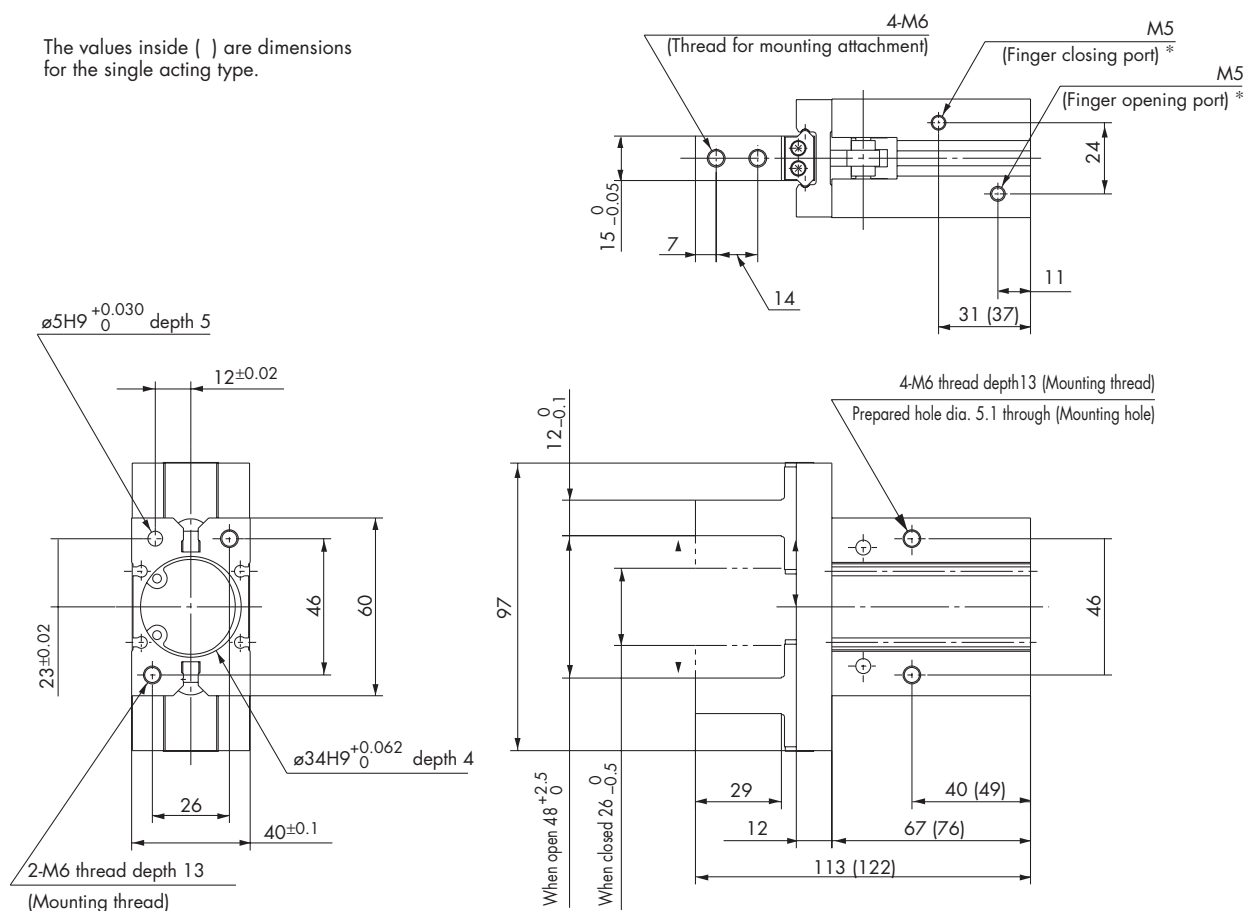
* For single action, the port on one side is a breathing hole.

Finger Position/Narrow Type

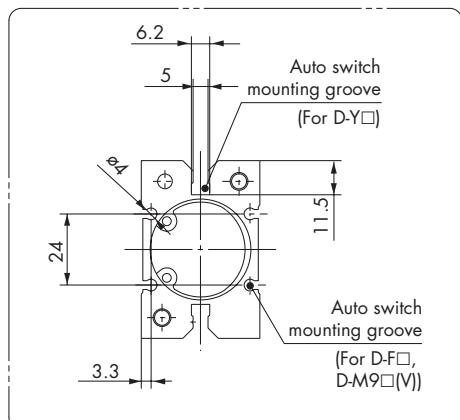


Dimensions: MHZ2-32□ Double acting/Single acting. Basic type

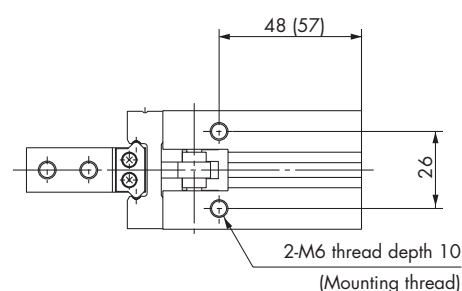
The values inside () are dimensions for the single acting type.



Auto Switch Mounting
Groove Dimensions



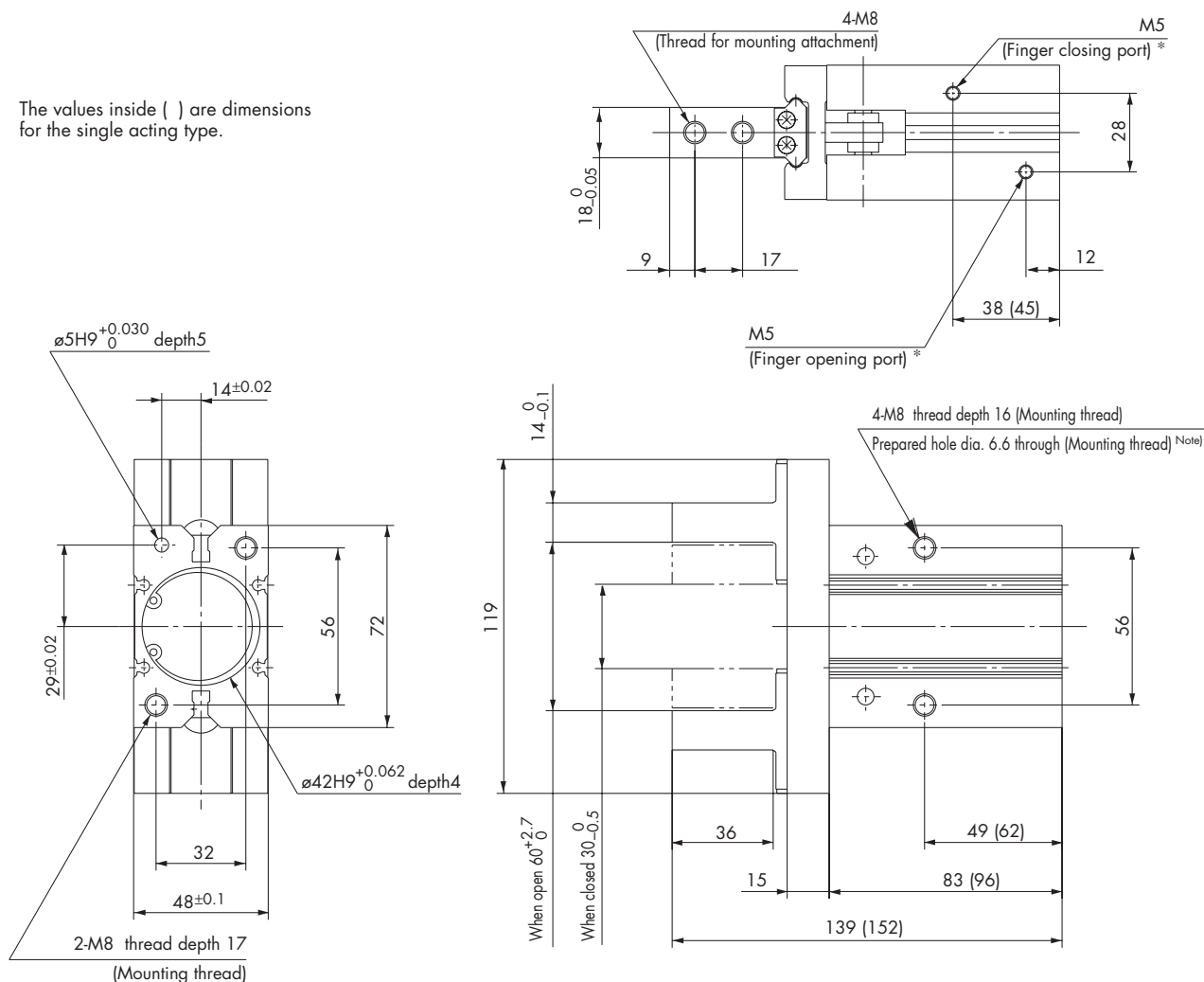
Note) When using D-Y59, D-Y69 and D-Y7 type auto switches, through-hole mounting is not possible.



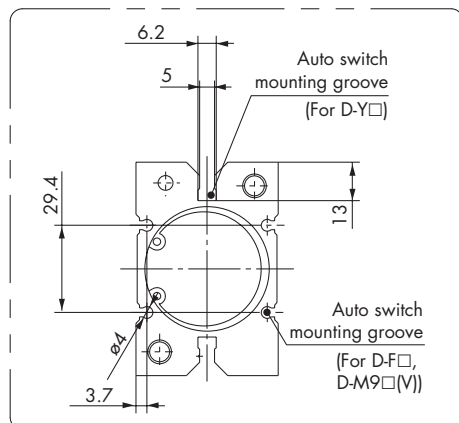
* For single action, the port on one side is a breathing hole.

Dimensions: MHZ2-40 □ Double acting/Single acting. Basic type

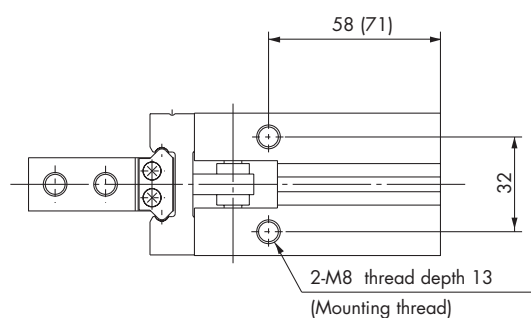
The values inside () are dimensions for the single acting type.



Auto Switch Mounting Groove Dimensions

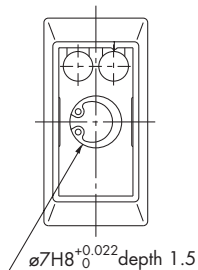
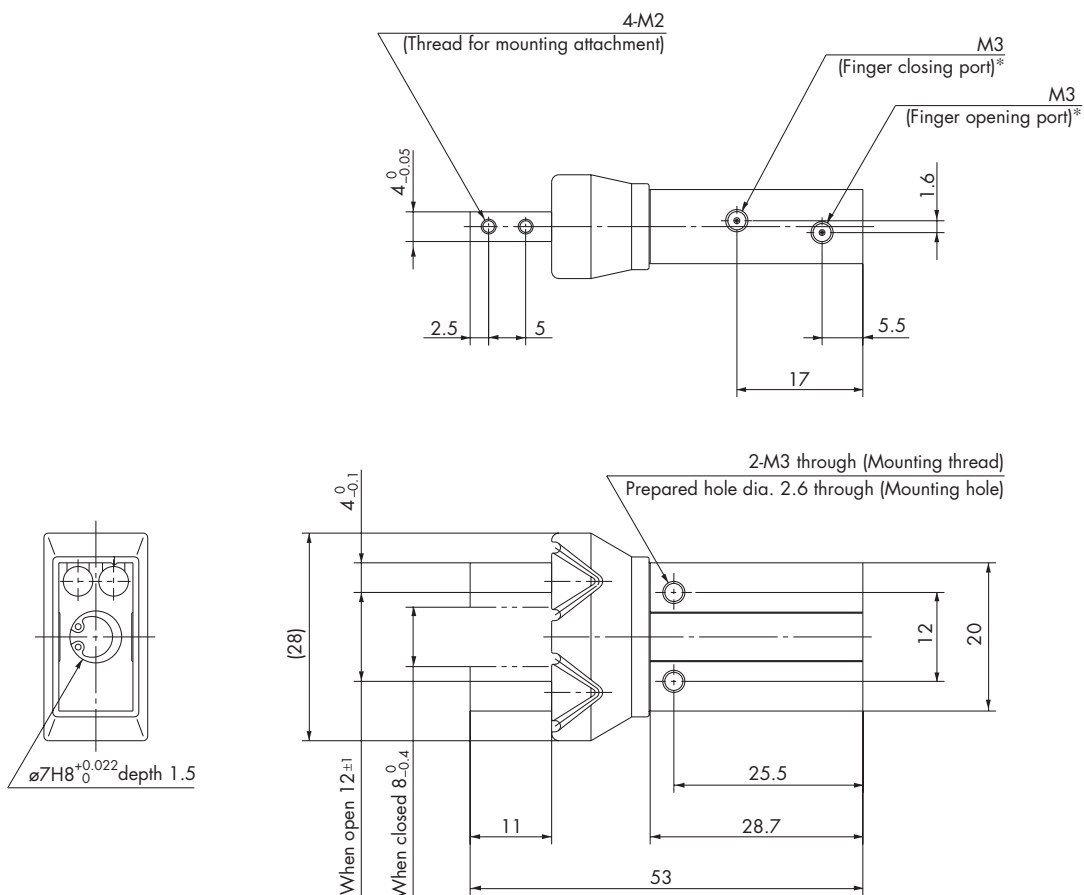


Note) When using D-Y59, D-Y69 and D-Y7 type auto switches, through-hole mounting is not possible.

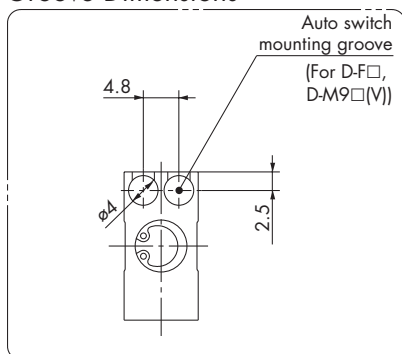


* For single action, the port on one side is a breathing hole.

Dimensions: MHZJ2-6□ Double acting/Single acting. Basic type
With Dust Cover

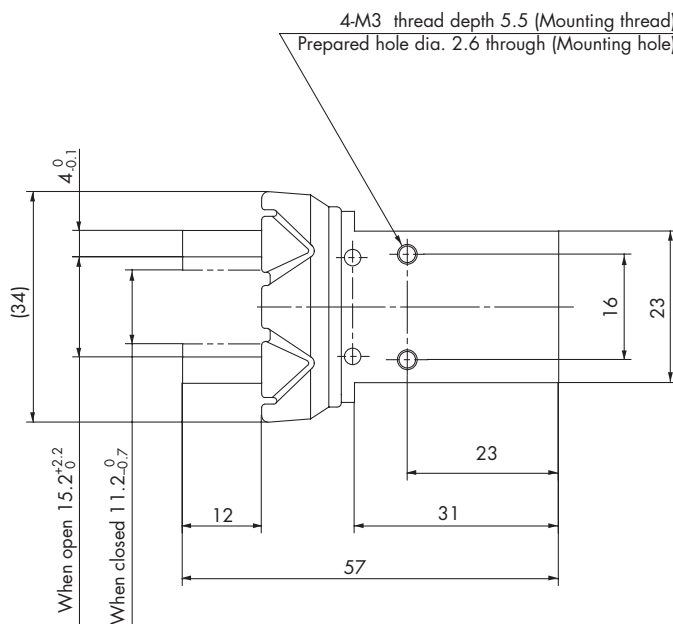
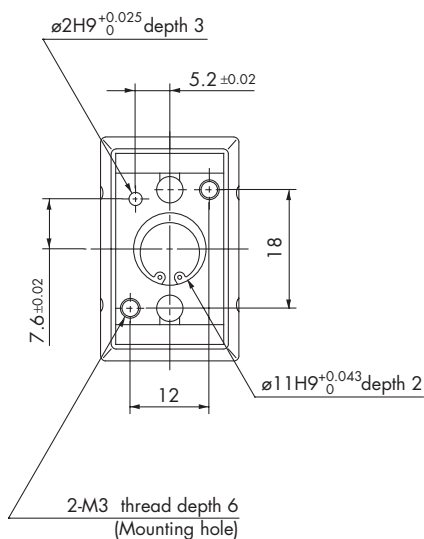
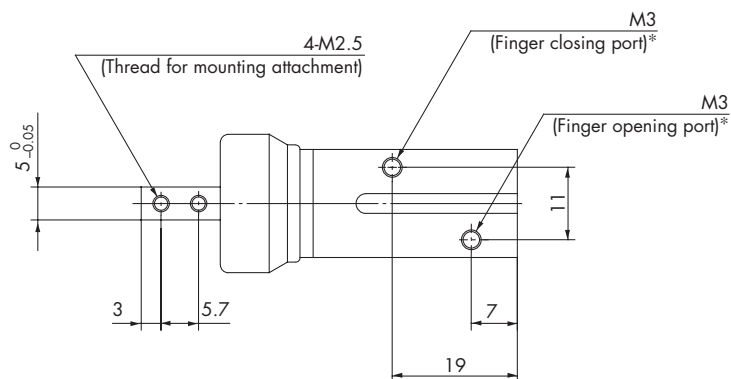


Auto Switch Mounting Groove Dimensions

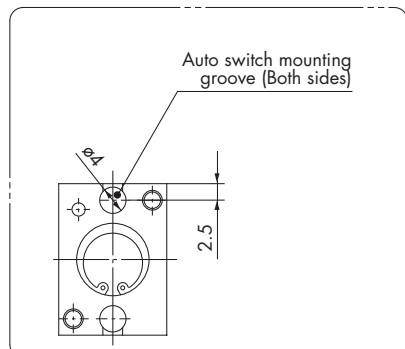


* For single action, the port on one side is a breathing hole.

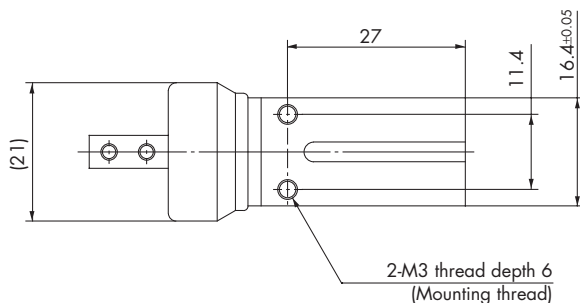
Dimensions: MHZJ2-10□Double acting/Single acting. Basic type
With Dust Cover



Auto Switch Mounting Groove Dimensions



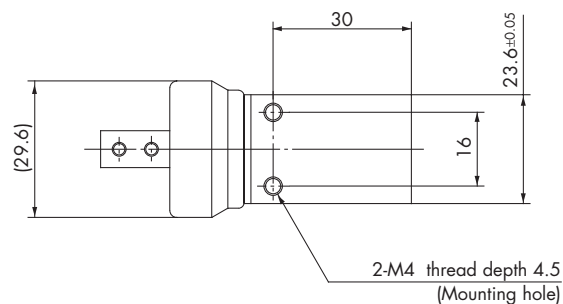
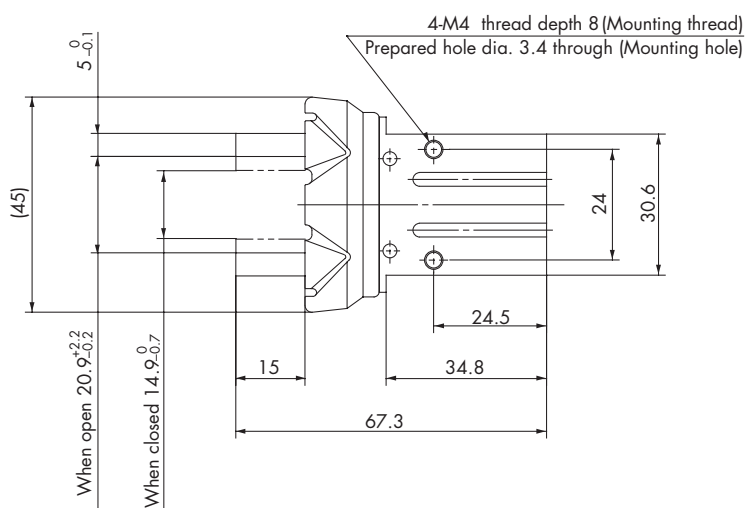
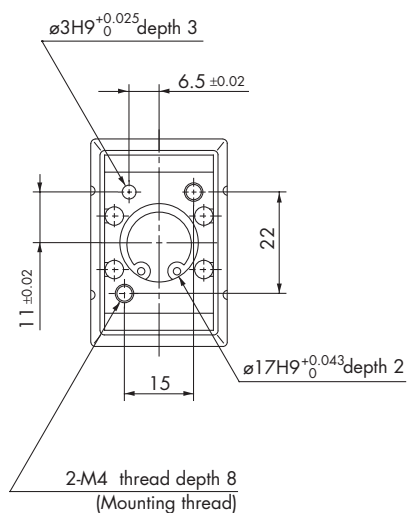
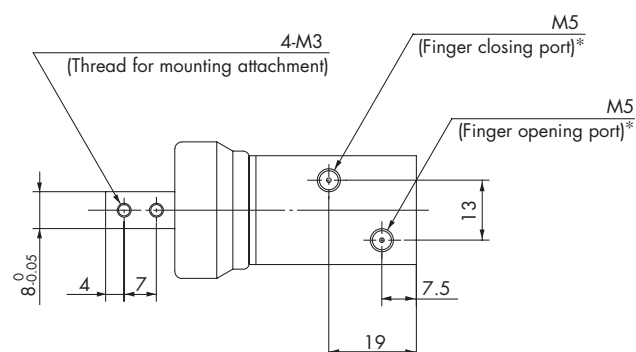
Note) When using auto switches, through-hole mounting is not possible.



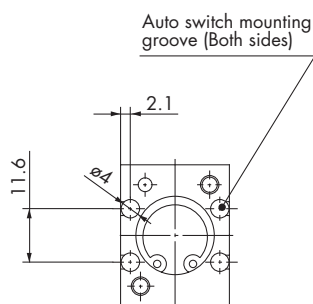
* For single action, the port on one side is a breathing hole.

Dimensions: MHZJ2-16□ Double acting/Single acting. Basic type

With Dust Cover

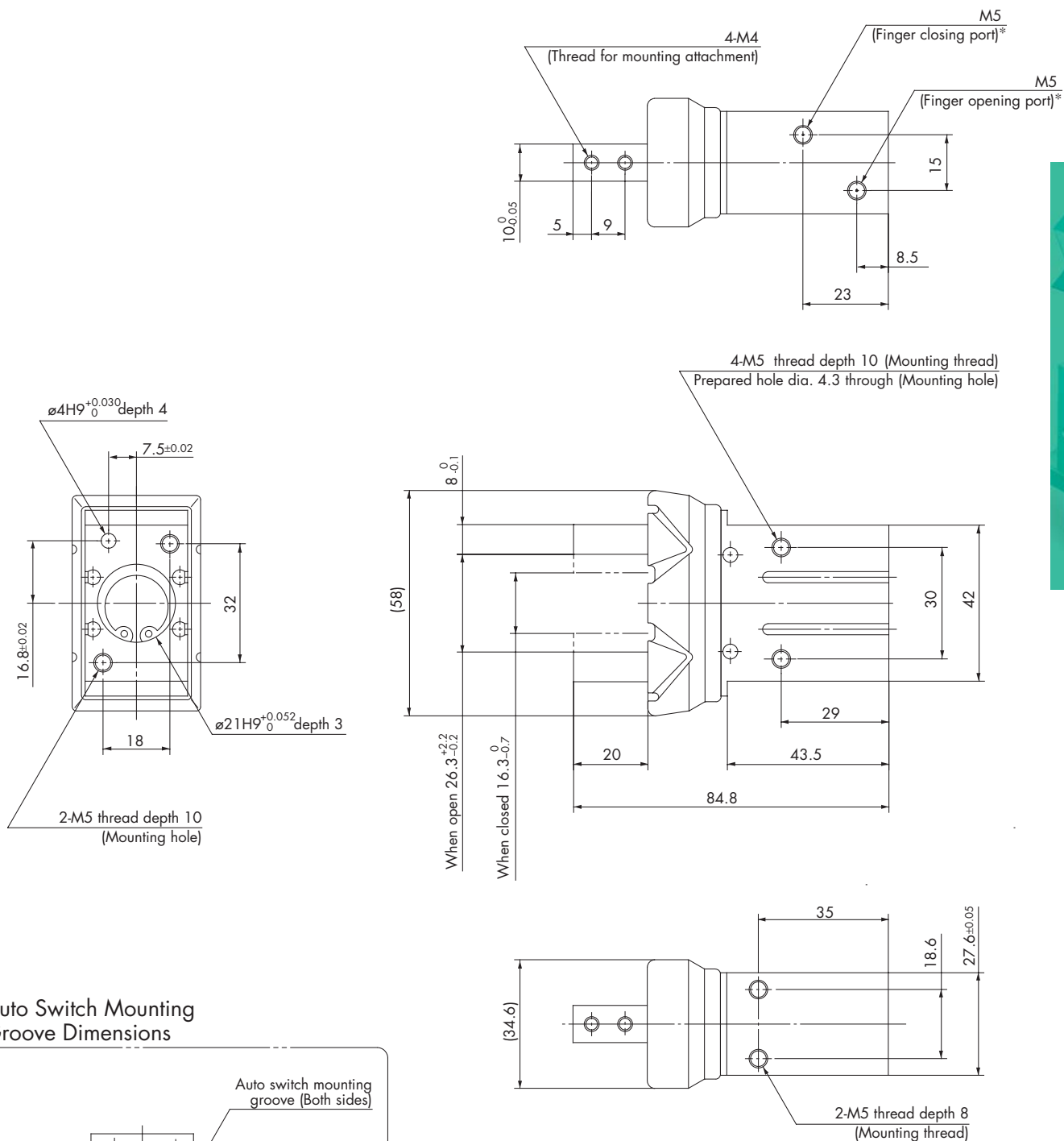


Auto Switch Mounting Groove Dimensions



* For single action, the port on one side is a breathing hole.

Dimensions: MHZJ2-20□ Double acting/Single acting. Basic type
With Dust Cover



* For single action, the port on one side is a breathing hole.

Grippers

