



EXCITING AND VERSATILE

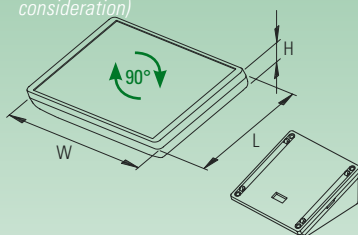
Protection class IP 54

With sealings (accessories).

Max. size of PCB (L x W in mm)

	bottom	cover	station
S	124 x 162	120 x 176	84 x 95
M	154 x 196	150 x 210	112 x 126
L	180 x 257	180 x 256	143 x 155

(cutouts of pillars not taken into consideration)



THE PRODUCT

The growing demand in the field of data visualisation calls for innovative products tailor-made to meet the requirements of today's users.

The new INTERFACE-TERMINAL meets all of the requirements of a modern man-machine interface. Here the user himself decides whether he would like to use the device as a mobile or as a stationary unit.

APPLICATIONS

Unique variety of applications:
Mobile – desk-top – wall mounted

Peripheral and interface equipment.
Office applications.
Communications technology.

Safety engineering. Biometrics.

Medical and laboratory technology.
Health sector.

Automation. Measuring/regulating/
controlling.



detailed drawings see our website
www.okw.com

INTERFACE-TERMINAL MOBILE/BASE

Order data on pages 146-147

OKW
GEHÄUSE
SYSTEME



CONTACT-FRIENDLY



MOBILE

Maximum mobility and independence.

With/without battery compartment (5 x AA), accessible from the outside, incl. protection against incorrect insertion as well as anti-rotation device.

User-friendly design with attractive flat styling in the handle area. Finger recesses on the underside ensure a secure grip.

Available with either flat or high bottom part for individual installation configurations, interfaces, cable inputs and outputs etc.

CHARGING / TRANSMITTING

Easy transmission of data and charging current. Contacts as accessories.

Case available either to hang in position (desktop application) or NEW: base with snap-in mechanism for secure desktop and wall mounted applications. A flat wall suspension element as a base or for contacts is now also available.

Operating panel can be mounted either vertically or horizontally.

The base offers adequate space for the electronics.

Max. display sizes

S 6.4" / 16 cm
M 8.4" / 21 cm
L 10.4" / 26 cm

The INTERFACE-TERMINAL provides sufficient space for large-area touch screen displays. Thus allowing simple, intuitive and interactive operation of the controls on the touch screen. The advantage is a perfect navigation experience.



EASY TO OPERATE

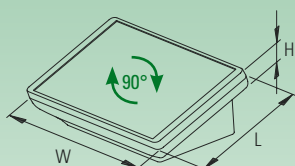
Protection class IP 54

With sealings (accessories).

Max. size of PCB (L x W in mm)

	bottom	cover	station
S	124 x 162	120 x 176	84 x 95
M	154 x 196	150 x 210	112 x 126
L	180 x 257	180 x 256	143 x 155

(cutouts of pillars not taken into consideration)



ERGONOMIC

Operating panel inclined by 20°. Ergonomically ideal for operating and reading – whether vertically or horizontally mounted.

Rubber feet are included in the kit to ensure non-slip desktop positioning.

BASE-MOUNTED VARIANTS

Individual desktop cases can be assembled from different components to match the component configuration.

Case can also be screwed to the base (desk). Assembly screws hidden on the underside.

Alternatively, the case snaps onto the base (desk/wall). If required, the unit can be secured by a latch lock.

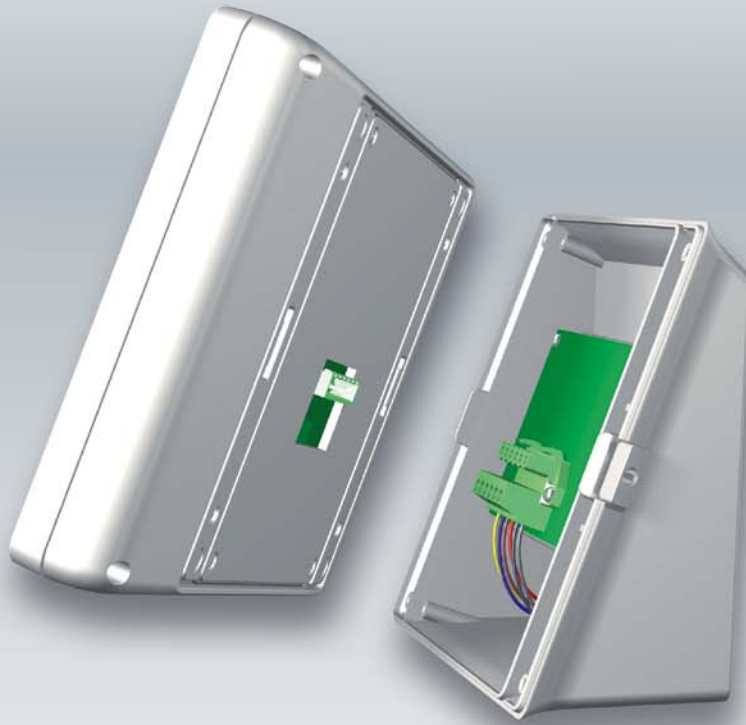


detailed drawings see our website
www.okw.com

INTERFACE-TERMINAL WALL

Order data on pages 146-147

OKW
GEHÄUSE
SYSTEME



INTERFACE PROFESSIONAL



EFFICIENT

Unique "interface" between a stationary and a mobile component.

Assembly can be significantly simplified by predefined, snap-in interfaces.

You can also benefit from the ease of assembly when equipping and connecting up the interfaces; plug-in connectors also prevent wiring errors whenever servicing is required.

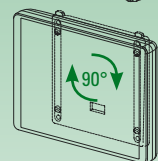
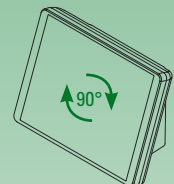
WALL MOUNTING

Direct wall mounting.
The ergonomically inclined base offers plenty of space for connectors, electronics as well as wiring.

Separate wall suspension element for low-profile wall mounting, suitable for cases without base.
The wall suspension element is prepared for contacts (accessories) for transmitting data and current.

Rational wall mounting

The case can be mounted on the wall as a closed unit.





NEW



ELEGANT DESIGN FRAMES

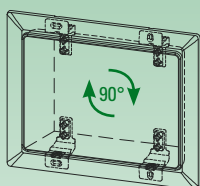
Protection class IP 54

With sealings (accessories).

Max. size of PCB (L x W in mm)

	bottom	cover
S	124 x 162	120 x 176
M	154 x 196	150 x 210
L	180 x 257	180 x 256

(cutouts of pillars not taken into consideration)



DESIGNS

If the architectural standards are particularly high, or in historically valuable buildings, INTERFACE-TERMINAL enclosures can also be harmoniously integrated in walls or front panels. Installation in plant and machinery is also possible.

Our speciality: individual colours and a wide choice of finishes. Please select the relevant Part-No. and tell us your colour or the standard finish you requirements.

INSTALLATION

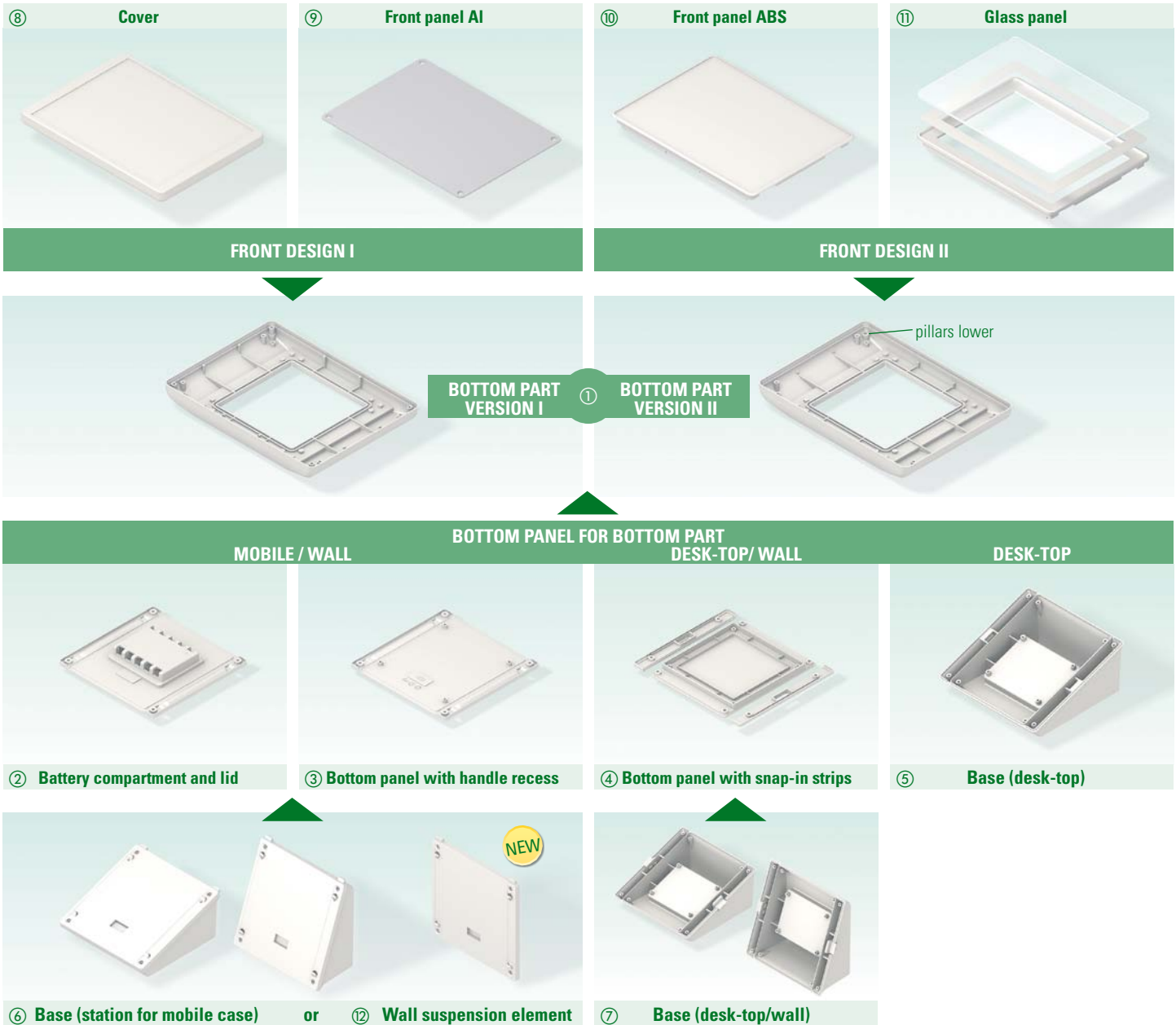
Easy installation: Mount holders on the fully assembled enclosure. Place the enclosure with holders in the wall/front panel and align it. Mark and drill mounting holes. Then bolt the enclosure with the holders from the front and push on the design frame.

Depending on requirements, there are different installation options: enclosures with top part, glass panel or ABS front panel. In the raised top part, special functions can be integrated laterally, for example openings for acoustics.



detailed drawings see our website
www.okw.com

SYSTEM COMPONENTS



YOUR APPLICATION / MINIMUM COMPONENTS REQUIRED

Mobile with
battery compartment 5 x AA.

① ② ①

Mobile without
battery compartment.

① ③ ①

Mobile with station and
battery compartment 5 x AA.
Contacts as accessory.

① ② ⑥ ①

Mobile with station
without battery compartment.

① ③ ⑥ ①

Mobile with battery compartment
5 x AA and wall suspension element
as base. Also ideal for flat wall
applications.

Contacts as accessory.

① ② ⑫ ①

Mobil without battery compart-
ment and wall suspension element
as base. Also ideal for flat wall
applications.

① ③ ⑫ ①

Desk-top / Wall.

Case snaps into base. If required,
unit can be secured by latch lock.

① ④ ⑦ ①

Installation.

For the installation in walls, in
front panels, machines or systems.

① ④ ⑫ ①

(④ not strictly necessary)

Desk-top.

Case screwed to base.

① ⑤ ①

① choice of front designs (separate article ⑧ - ⑪)

Note: Assembly of the operating panel vertically or horizontally, depending on the application;
when deciding on the assembly orientation, take account of the battery compartment (②) / bottom panel (③, ④), see assembly instruction on our website www.okw.com.

Subject to technical modification without notice. Typographical and other errors do not justify any claim for damages. Stand: 10/12e Copyright © 2012 OKW Gehäusesysteme

INTERFACE-TERMINAL

Enclosure (for the difference between vers. I and II see front design options)
 ABS (UL 94 HB), off-white RAL 9002, dim. in mm (L x W x H)

		Part-No. INTERFACE-TERMINAL S		Part-No. INTERFACE-TERMINAL M		Part-No. INTERFACE-TERMINAL L	
		I	II	I	II	I	II
① Bottom part	flat	B 40 42 707 (135 x 190 x 24.5)	B 40 42 717 (135 x 190 x 24.5)	B 40 44 707 (165 x 225 x 25.5)	B 40 44 717 (165 x 225 x 25.5)	B 40 46 707 (195 x 275 x 26.5)	B 40 46 717 (195 x 275 x 26.5)
	high	B 40 42 757 (135 x 190 x 34.5)	B 40 42 767 (135 x 190 x 34.5)	B 40 44 757 (165 x 225 x 35.5)	B 40 44 767 (165 x 225 x 35.5)	B 40 46 757 (195 x 275 x 36.5)	B 40 46 767 (195 x 275 x 36.5)

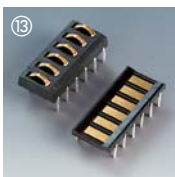
Bottom panel for bottom part required depending on the application ABS (UL 94 HB), off-white, dim. in mm (L x W x H)

	S	M	L
② Battery compartment and lid, contacts tin-plated 5 x AA	B 41 42 047	B 41 44 047	B 41 46 047
③ Bottom panel with handle recess	B 41 42 167	B 41 44 167	B 41 46 167
④ Bottom panel with snap-in strips	B 41 42 257	B 41 44 257	B 41 46 257
⑤ Base (desk-top) with covers, for combinations with open bottom part ① (for screw-type connection* ¹)	B 40 42 827 (123 x 123 x 53)	B 40 44 827 (153 x 153 x 63)	B 40 46 827 (183 x 183 x 73)
⑥ Base (station for mobile case) with base covers, for combinations ① with ② or ③ (for hanging in position/snap-in connection* ²)	B 40 42 837 123 x 123 x 60	B 40 44 837 153 x 153 x 70	B 40 46 837 (183 x 183 x 80)
⑦ Base (desk-top/wall) with clips and latch-lock, for combination ① with ④ (snap-in connection)	B 40 42 847 (123 x 123 x 53)	B 40 44 847 (153 x 153 x 63)	B 40 46 847 (183 x 183 x 73)
⑫ Wall suspension element with snap-in connection, for combinations ① with ② or ③, not suitable for case with base	B 41 42 247	B 41 44 247	B 41 46 247

Front design		suitable for bottom part S		suitable for bottom part M		suitable for bottom part L	
		I	II	I	II	I	II
⑧ Cover ABS (UL 94 HB), off-white RAL 9002	outside dim. in mm max. dim. keypad in mm	B 40 42 407 135 x 190 x 12 123 x 162	—	B 40 44 407 165 x 225 x 12 153 x 197	—	B 40 46 407 195 x 275 x 12 183 x 247	—
⑨ Front panel Al, matt anodised	outside dim. in mm	B 41 42 106 131.5 x 186.5 x 2	—	B 41 44 106 161.5 x 221.5 x 2	—	B 41 46 106 191.5 x 271.5 x 2	—
⑩ Front panel ABS (UL 94 HB) off-white RAL 9002	outside dim. in mm max. dim. keypad in mm	—	B 41 42 107 131.7 x 186.7 x 3 184.0 x 128.9	—	B 41 44 107 161.7 x 221.7 x 3 218.8 x 158.7	—	B 41 46 107 191.7 x 271.7 x 3 269.0 x 188.8
⑪ Glass panel without printing* ³	outside dim. in mm	—	B 41 42 203 128.7 x 183.7 x 4	—	B 41 44 203 158.7 x 218.7 x 4	—	B 41 46 203 188.7 x 268.7 x 4

INTERFACE-TERMINAL ACCESSORIES

Article	S	M	L
⑬ Contact, male for ⑥, 6-pole* ¹ Contact, female for ② or ③, 6-pole* ¹	A 91 78 007 A 91 78 008	A 91 78 007 A 91 78 008	A 91 78 007 A 91 78 008
⑭ Sealing, bottom part - front	B 41 42 005	B 41 44 005	B 41 46 005
⑮ Sealing, bottom part - base/bottom panel/battery comp.	B 41 42 006	B 41 44 006	B 41 46 006
⑮ Sealing, base - base cover (⑥)	B 41 42 006	B 41 44 006	B 41 46 006
⑯ Installation assembly kit "flat"* ⁴ off-white, RAL 9002 individual colour of your choice (lacquering) with standard decor of your choice (water transfer printing)	B 41 42 587 B 41 42 58L B 41 42 58W	B 41 44 587 B 41 44 58L B 41 44 58W	B 41 46 587 B 41 46 58L B 41 46 58W
⑯ Installation assembly kit "high"* ⁴ off-white, RAL 9002 individual colour of your choice (lacquering) with standard decor of your choice (water transfer printing)	B 41 42 597 B 41 42 59L B 41 42 59W	B 41 44 597 B 41 44 59L B 41 44 59W	B 41 46 597 B 41 46 59L B 41 46 59W



*¹ holes required, for assembly instruction please refer to our website www.okw.com

*² snap-in installation advisable for wall mounted use and for use of contacts (accessories)

*³ kit with adhesive foil and mounting frame; display window with individual printing adapted to your visible display cutout as well as to cover the area of adhesive foil, on demand.

*⁴ for the installation of the enclosure in walls, in front panels, machines or systems; holders suitable for bottom part "flat" / "high" (can only be used in conjunction with bottom panel ④ or open rear side of enclosure); push on design frame – suitable for front designs I and II; assembly instruction on our website www.okw.com; if you wish an individual colour or standard decor please let us know your required colour resp. standard decor (see our website www.okw.com)