

Technical drawing of a 24-pin D-sub connector. The drawing shows a side view of the connector with dimensions in millimeters and inches. Key features include 24 pins arranged in two rows of 12, a central key, and a locking mechanism. Dimensions include overall length (41.15 mm), pin pitch (0.635 mm), and various mounting and contact dimensions. Labels include 'POS. #1', 'CONTACTS', 'REF', 'TAP M2.0', and 'Ø1.6 (Ø0.063)'.

PDM: Rev:S STATUS: Released Printed: Jul 22, 2010 6



4.FRAME : 100μ" OVERALL COPPER.



**PDM: Rev:S**

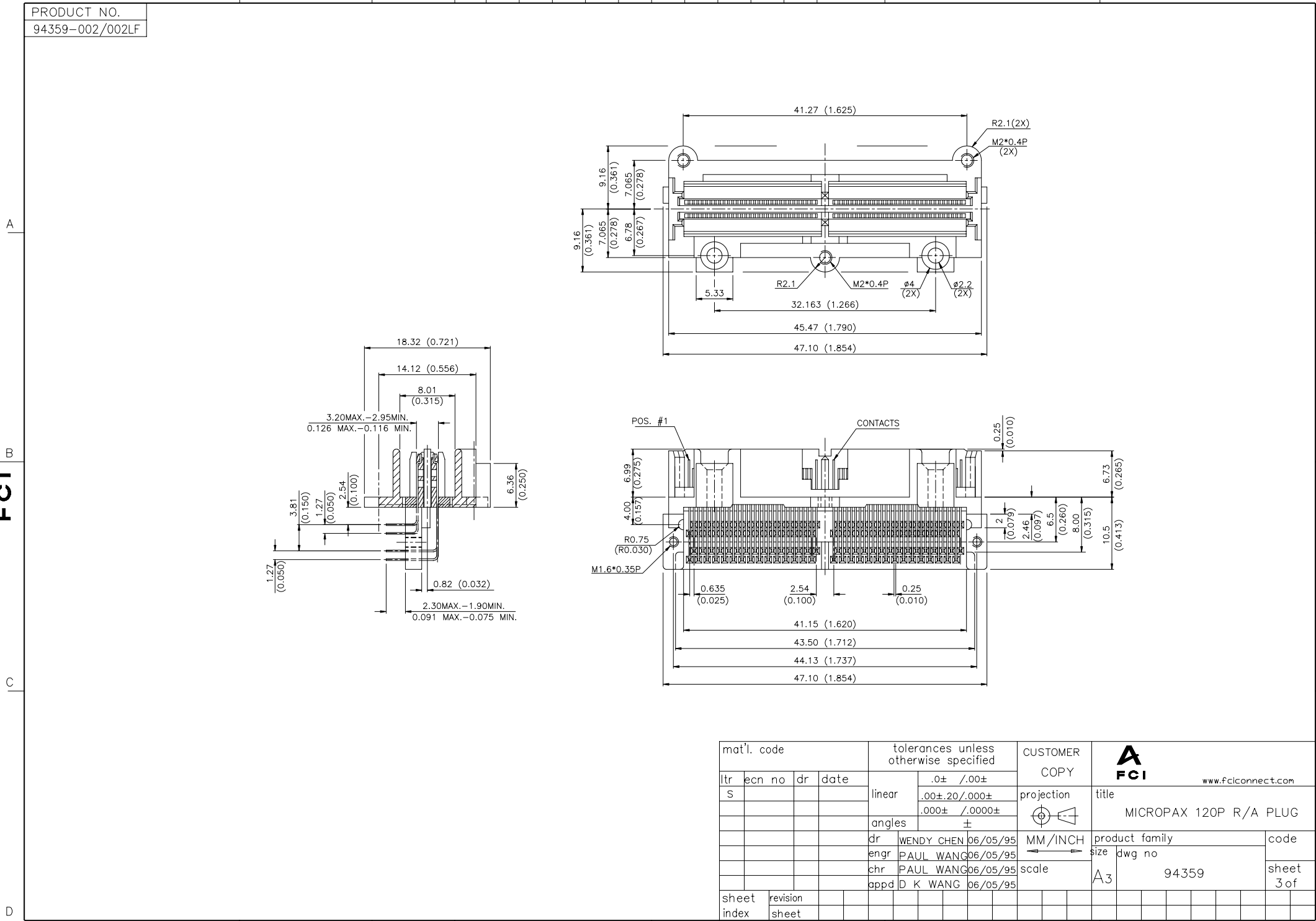
STATUS: Released


Printed: Jul 22, 2010

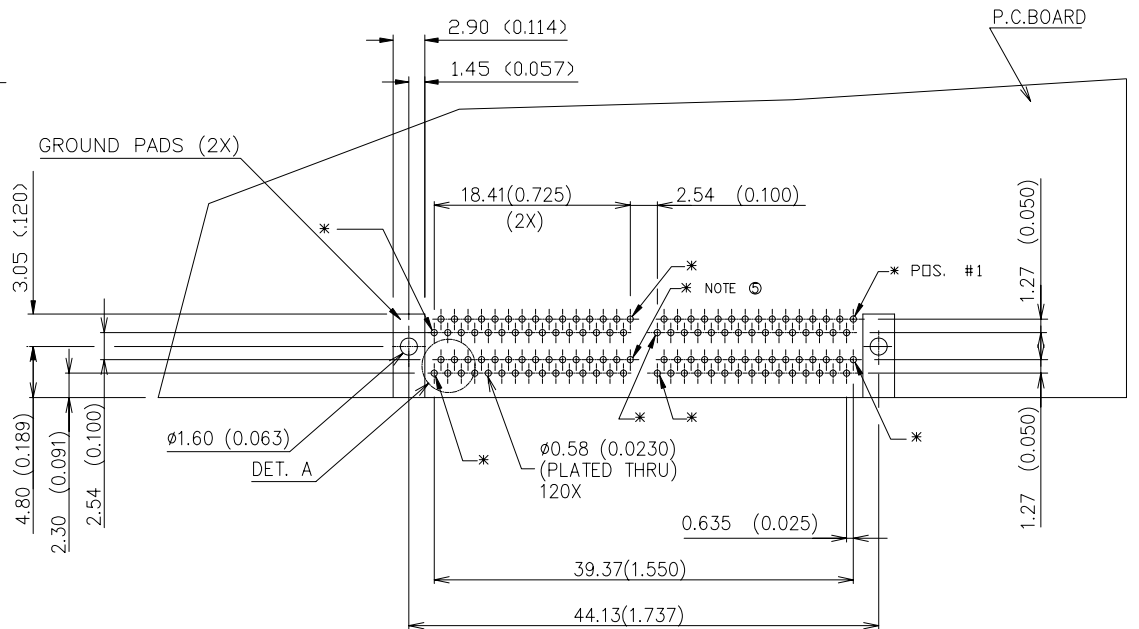
Tous droits strictement reserves. Reproduction ou communication a des tiers interdite sous quelque forme que ce soit sans autorisation ecrite du Propriete de c FCI. Droits de reproduction FCI.

FCI

All rights strictly reserved. Reproduction or issue to third parties in any form whatever is not permitted without written authority from the proprietor.



mat'l. code				tolerances unless otherwise specified		CUSTOMER COPY	 www.fciconnect.com	
litr	ecn no	dr	date	linear	.0± / .00± .00±.20 / .000± .000± / .0000±			
S				angles	±	projection	title	
				dr	WENDY CHEN 06/05/95	MM/INCH	MICROPAX 120P R/A PLUG	
				enr	PAUL WANG 06/05/95	scale	product family	
				chr	PAUL WANG 06/05/95		size dwg no	
				appd	D K WANG 06/05/95		A3 94359	
sheet index	revision sheet						code	
							sheet 3 of	



NOTE:

- 1.ALL BOARD HOLES ARE  $\varnothing 0.15/0.006"$
- 2.MATERIAL :
- METAL FRAME : ZINC ALLOY#3
  - INSULATOR : HIGH TEMPERATURE ENGINEERING PLASTIC
  - CONTACT : BeCu -THK-.254 (.0100)
- 3.PLATING :
- SOLDER TAILS :  $150 \mu"/3.81\mu\text{m}$  SNPB FOR 94359-002  
 $150 \mu"/3.81\mu\text{m}$  PURE TIN FOR 94359-002LF
  - CONTACT PLATING : UNDERPLATING NICKEL  $50\mu"$  OVERALL  
GXT IN CONTACT AREA  $30\mu"/.76\mu\text{m}$
- 4.FRAME :  $100\mu"$  OVERALL COPPER.
5. "\*" REPRESENT LONG PIN AT FMLB FEATURE.

[illegible]



C

C

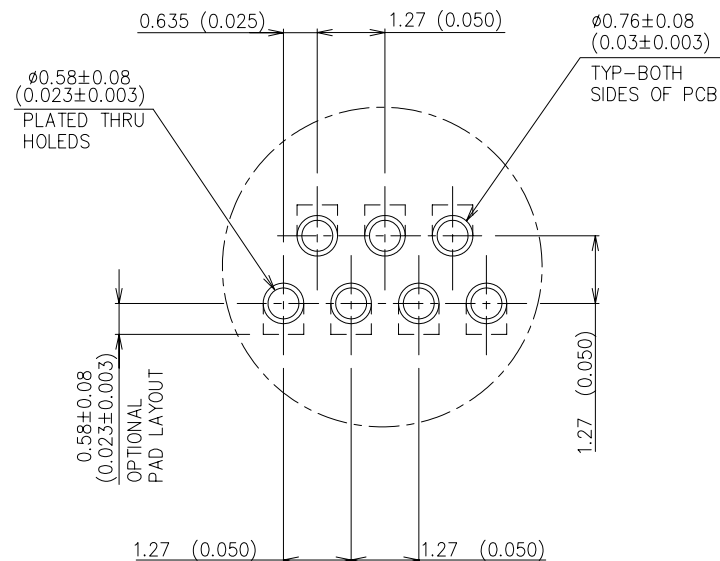
A

B

C

D

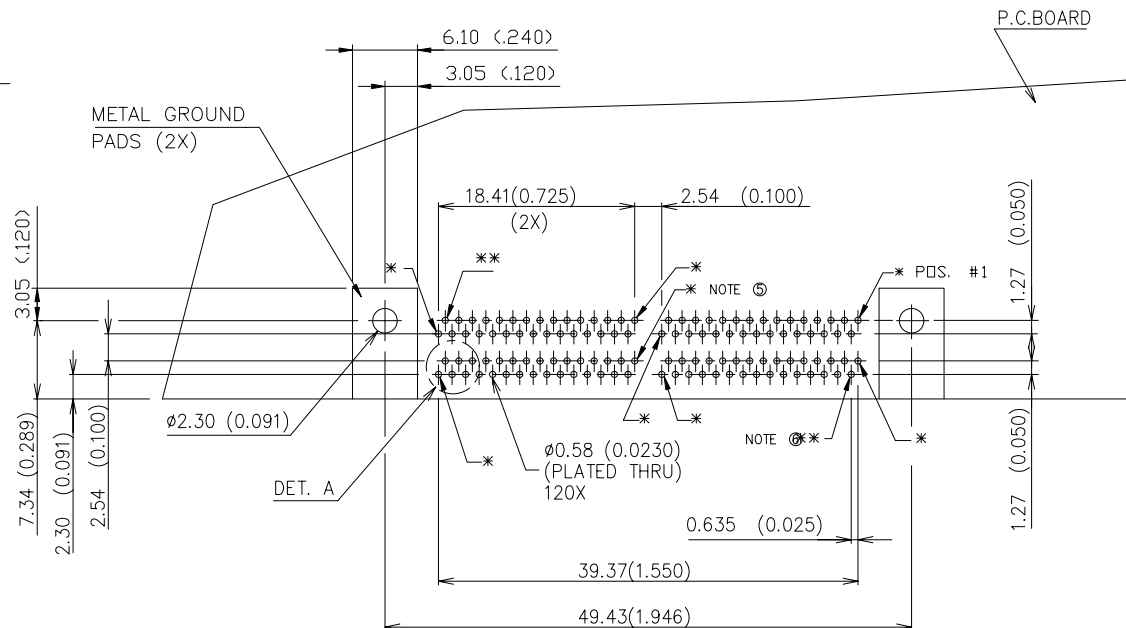
PRODUCT NO.  
94359-003/003LF



DET. A

NOTE:

1. ALL BOARD HOLES ARE  $\phi 0.15 / 0.006$
2. MATERIAL :
  - METAL FRAME : ZINC ALLOY #3
  - INSULATOR : HIGH TEMPERATURE ENGINEERING PLASTIC
  - CONTACT : BeCu -THK-.254 (.0100)
3. PLATING :
  - SOLDER TAILS : 150  $\mu$ "/3.81 $\mu$ m SNPB FOR 94359-003  
150  $\mu$ "/3.81 $\mu$ m PURE TIN FOR 94359-003LF
  - CONTACT PLATING : UNDERPLATING NICKEL 50 $\mu$ " OVERALL  
GXT IN CONTACT AREA 30 $\mu$ "/.76 $\mu$ m
4. FRAME : 100 $\mu$ " OVERALL COPPER.
5. "\*" REPRESENT LONG PIN LOCATION.
6. "\*\*\*" REPRESENT SHORT PIN LOCATION, THE OTHERS ARE MIDUIM PIN LOCATION AT FMLB FEATURE.


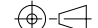



A

B

C

D

mat'l. code				tolerances unless otherwise specified		CUSTOMER COPY		  www.fciconnect.com		
ltr	ecn no	dr	date	linear	.0± / .00±	projection	title			
S					.00±.12 / .000±		MICROPAX 120P R/A PLUG			
				angles	.000± / .0000±					
				dr	WENDY CHEN 02/01/96	MM/INCH	product family		code	
				enrg	PAUL WANG 02/01/96		size dwg no			
				chr	PAUL WANG 02/01/96	scale	A3 94359		sheet 6 of	
				appd	JENN TSAO 02/01/96					
sheet index	revision sheet									

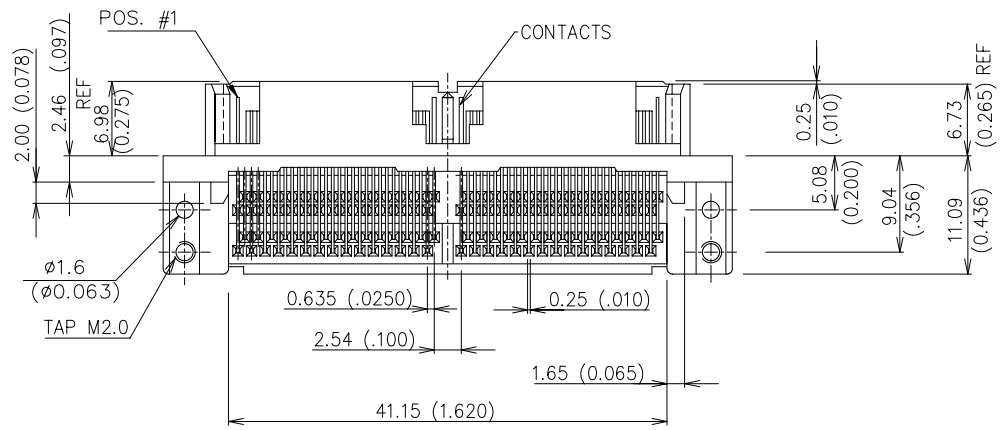
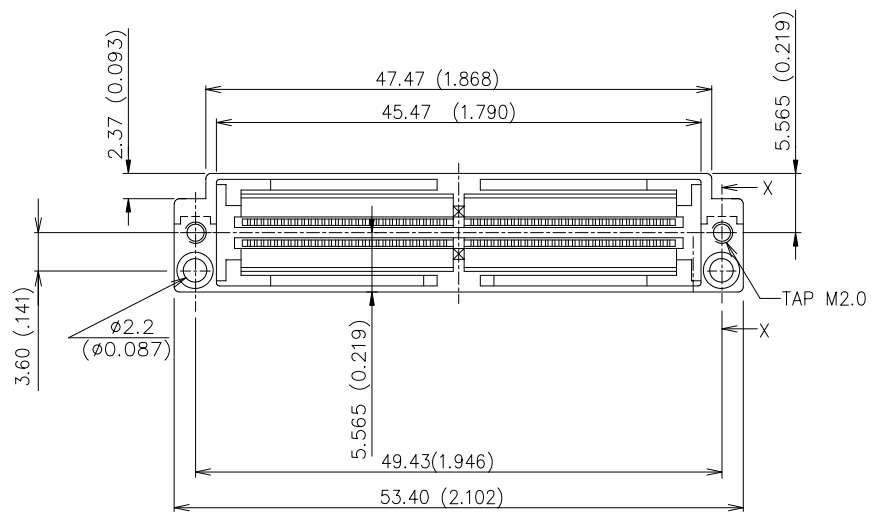
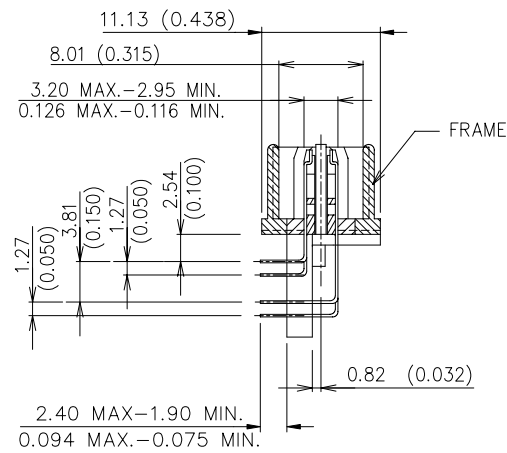
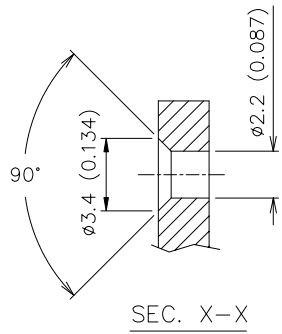
Tous droits strictement reserves. Reproduction ou communication a des tiers interdite sous quelque forme que ce soit sans autorisation ecrite du Propriete de c FCI. Droits de reproduction FCI.



FCI

All rights strictly reserved. Reproduction or issue to third parties in any form whatever is not permitted without written authority from the proprietor.

D

PRODUCT NO.  
94359-004/004LF



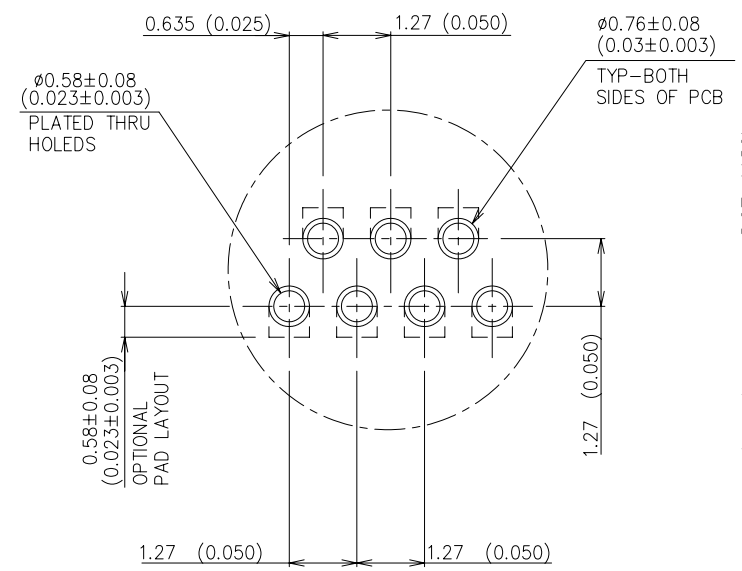
mat'l. code				tolerances unless otherwise specified		CUSTOMER COPY	 www.fciconnect.com	
ltr	ecn no	dr	date	linear	.0± / .00±			
S					.00±.20 / .000±	projection		
				angles	.000± / .0000±			
				dr	SHIRLEY HSU 09/16/96	MM/INCH	product family	
				enr	PAUL WANG 09/16/96		size	
				chr	PAUL WANG 09/16/96	scale	dwg no	
				appd	JENN TSAO 09/16/96		A3	
sheet	revision							
index	sheet							

Tous droits strictement reserves. Reproduction ou communication a des tiers interalite sous quelque forme que ce soit sans autorisation ecrite du Propriete de c FCI. Droits de reproduction FCI.

FCI

All rights strictly reserved. Reproduction or issue to third parties in any form whatever is not permitted without written authority from the proprietor.

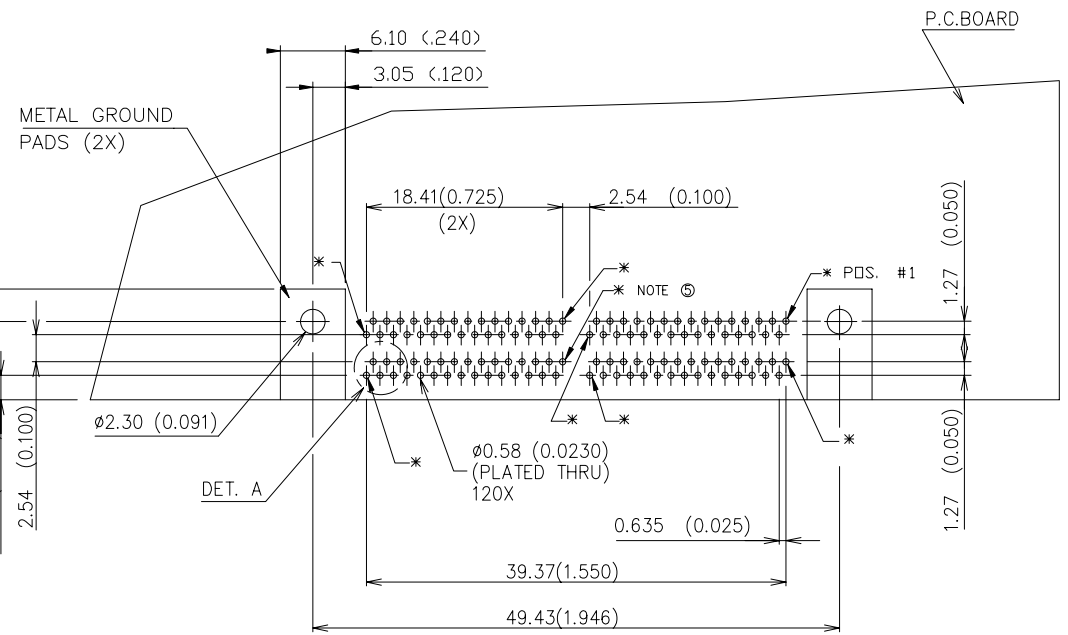
PRODUCT NO.  
94359-004/004LF



DET. A

NOTE:

- 1.ALL BOARD HOLES ARE  $\varnothing 0.15/0.006"$
- 2.MATERIAL :
  - METAL FRAME : ZINC ALLOY#3
  - INSULATOR : HIGH TEMPERATURE ENGINEERING PLASTIC
  - CONTACT : BeCu -THK-.254 (.0100)
- 3.PLATING :
  - SOLDER TAILS : 150  $\mu$ "/3.81 $\mu$ m SNPB FOR 94359-004  
150  $\mu$ "/3.81 $\mu$ m PURE TIN FOR 94359-004LF
  - CONTACT PLATING : UNDERPLATING NICKEL 50 $\mu$ " OVERALL  
GXT IN CONTACT AREA 30 $\mu$ "/.76 $\mu$ m
- 4.FRAME : 100 $\mu$ " OVERALL COPPER.
5. "\*" REPRESENT LONG PIN LOCATION.



mat'l. code				tolerances unless otherwise specified		CUSTOMER COPY		<b>FCI</b> www.fciconnect.com	
ltr	ecn no	dr	date	linear	.0± / .00± .00±.12 / .000± .000± / .0000±	projection	title	MICROPAX 120P R/A PLUG	
S				angles	±				
				dr	SHIRLEY HSU 09/16/96	MM/INCH	product family	code	
				enr	PAUL WANG 09/16/96		size	dwg no	
				chr	PAUL WANG 09/16/96	scale	A3	94359	
				appd	JENN TSAO 09/16/96			sheet 8 of	
sheet index	revision sheet								

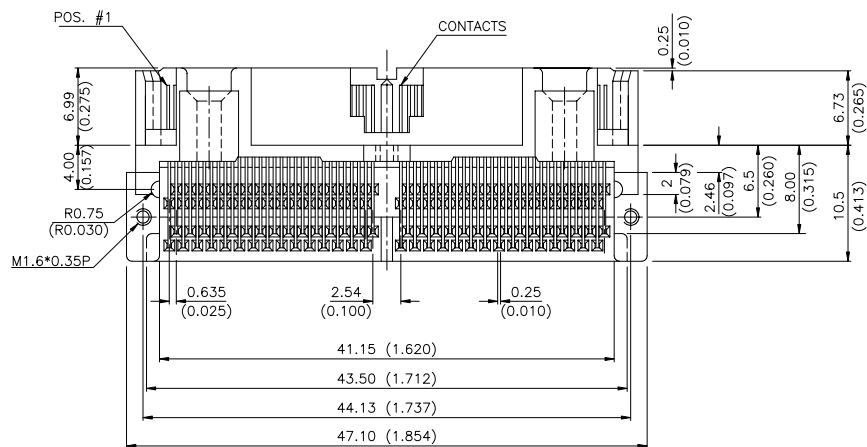
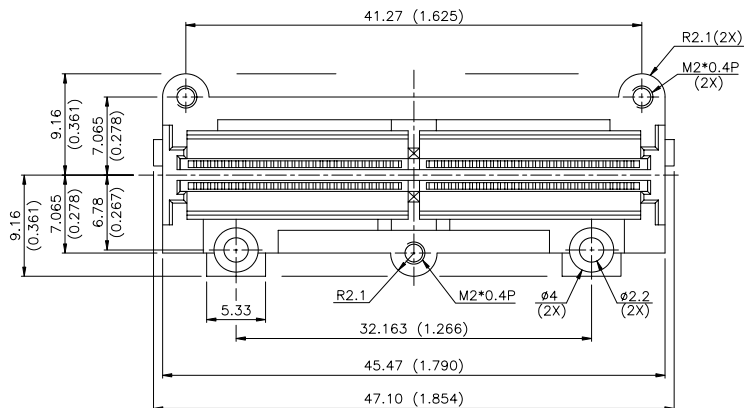
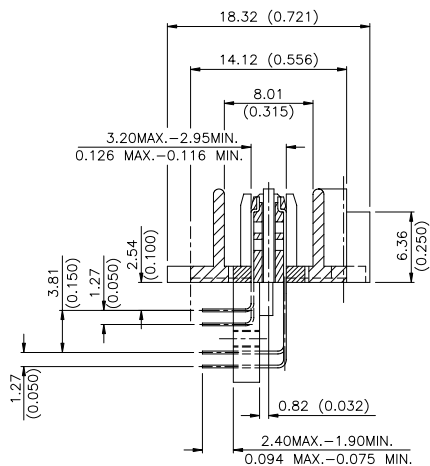


Tous droits strictement reserves. Reproduction ou communication a des tiers interdite sous quelque forme que ce soit sans autorisation ecrite du Propriete de c FCI. Droits de reproduction FCI.

FCI

All rights strictly reserved. Reproduction or issue to third parties in any form whatever is not permitted without written authority from the proprietor.

PRODUCT NO.  
94359-005/005LF



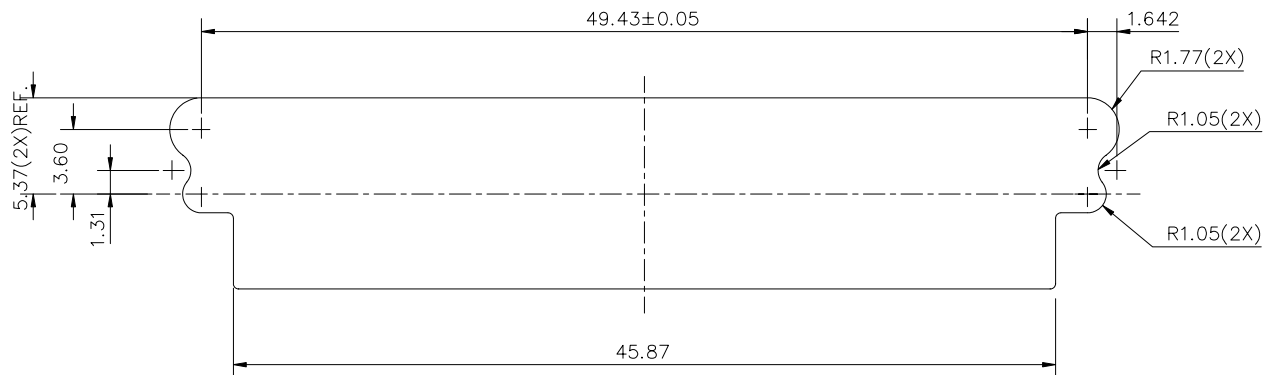
mat'l. code				tolerances unless otherwise specified		CUSTOMER COPY		FCI		www.fciconnect.com	
litr	ecn no	dr	date	linear	.0± / .00±	projection	title				
S					.00±.20/.000±		MICROPAX 120P R/A PLUG				
				angles	.000± / .0000±						
				dr	SHIRLEY HSU 10/09/96	MM/INCH	product family			code	
				enrg	H C LIO 10/09/96		size	dwg no		sheet	
				chr	PAUL WANG 10/09/96	scale	A3	94359		9 of	
				appd	JEEN TSAO 10/09/96						
sheet	revision										
index	sheet										

Tous droits strictement reserves. Reproduction ou communication a des tiers interdite sous quelque forme que ce soit sans autorisation ecrite du Propriete de c FCI. Droits de reproduction FCI.



FCI

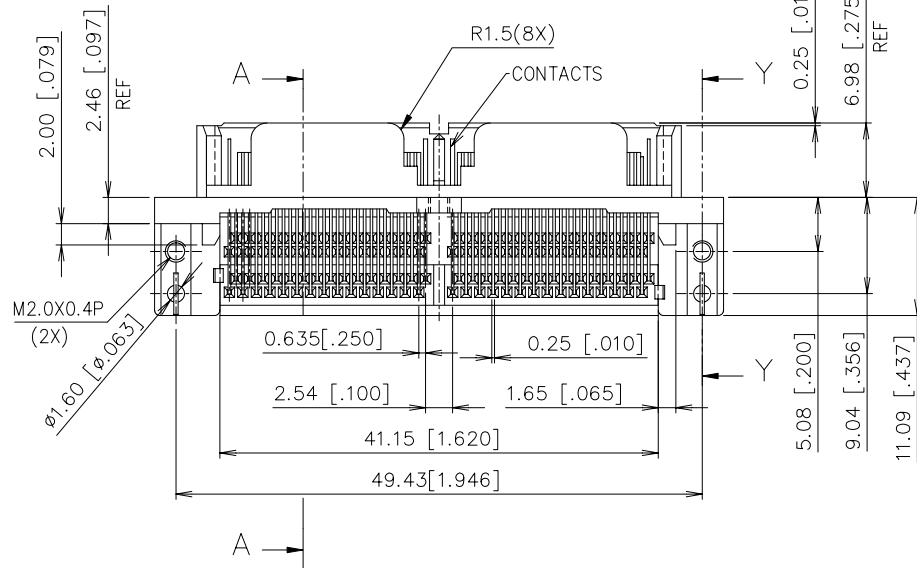
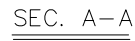
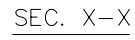
All rights strictly reserved. Reproduction or issue to third parties in any form whatever is not permitted without written authority from the proprietor.

PRODUCT NO.  
94359-004/004LF

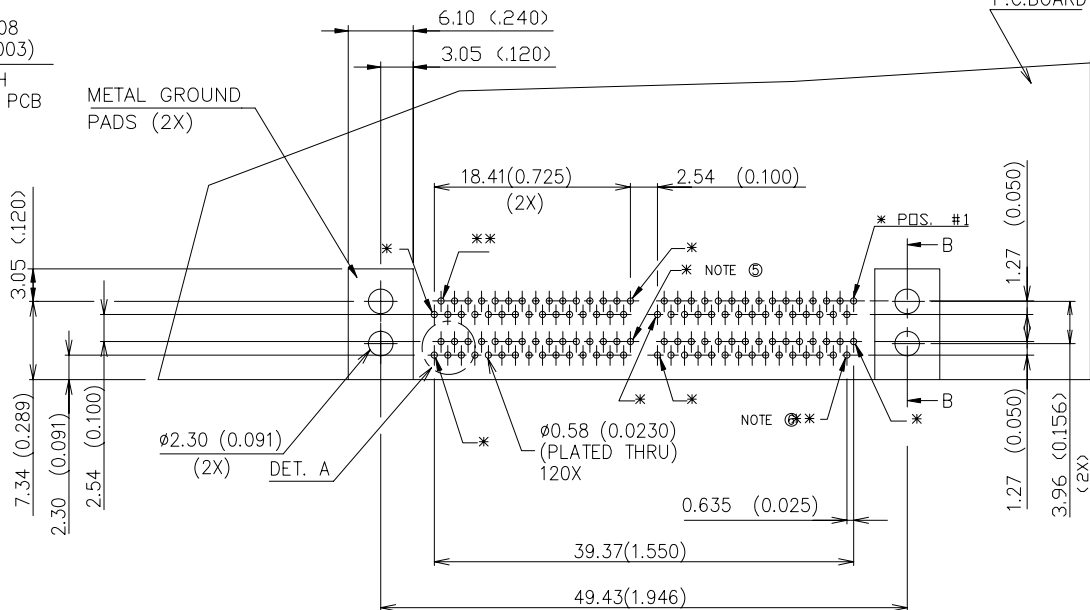


RECOMMENDED OPENING FOR MOUNTING BRACKET FOR 94359-004/004LF PLUG

mat'l code				tolerance unless otherwise specified			CUSTOMER COPY		<div> www.fciconnect.com</div>				
rev.	ecn	no.	dr	date	linear	.0 ± 0.20	projection 	title MOUNTNG BRACKET FOR MICROPAX PLUG 94359-004					
S				.00 ± 0.10									
				.000± 0.05									
					angles	± 2°							
				dr	SHIRLEY HSU	10/15/96	unit	product family			code		
				engr	PAUL WANG	10/15/96	mm /inch	size			dwg no.		
				chr	PAUL WANG	10/15/96	scale	A3			94359		
				appd	JEEN TSAO	10/15/96					sheet 10 OF		
sheet	revision												
index	sheet												



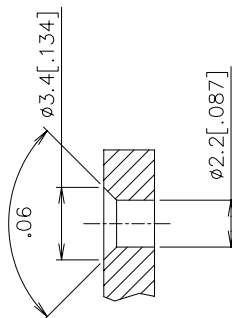
All rights strictly reserved. Reproduction or issue to third parties in any form whatever is not permitted without written authority from the proprietor.



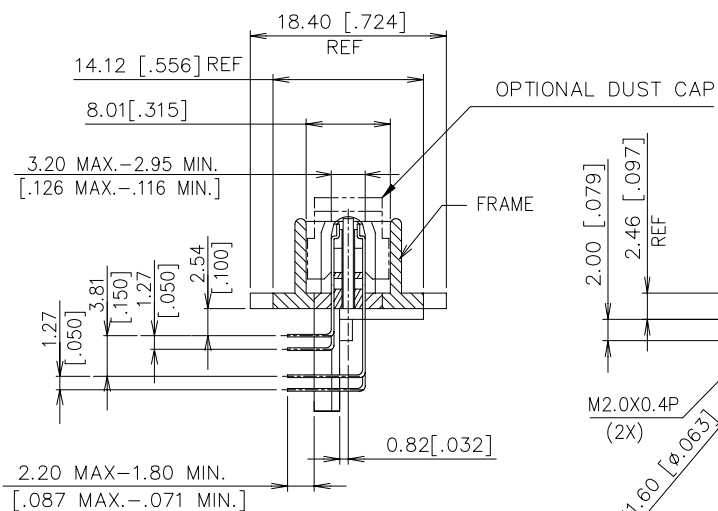
6. "\*" REPRESENT SHORT PIN LOCATION, THE OTHERS ARE MEDIUM PIN LOCATION AT FMLB FEATURE.

PDM: Rev:S STATUS: Released

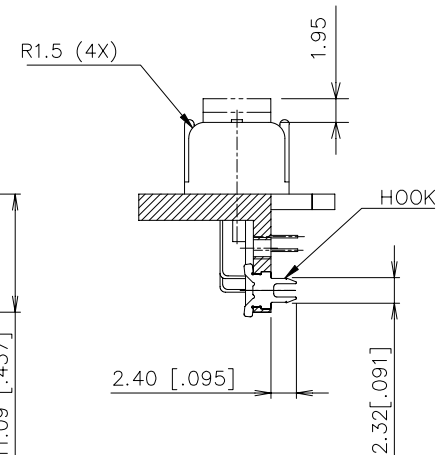
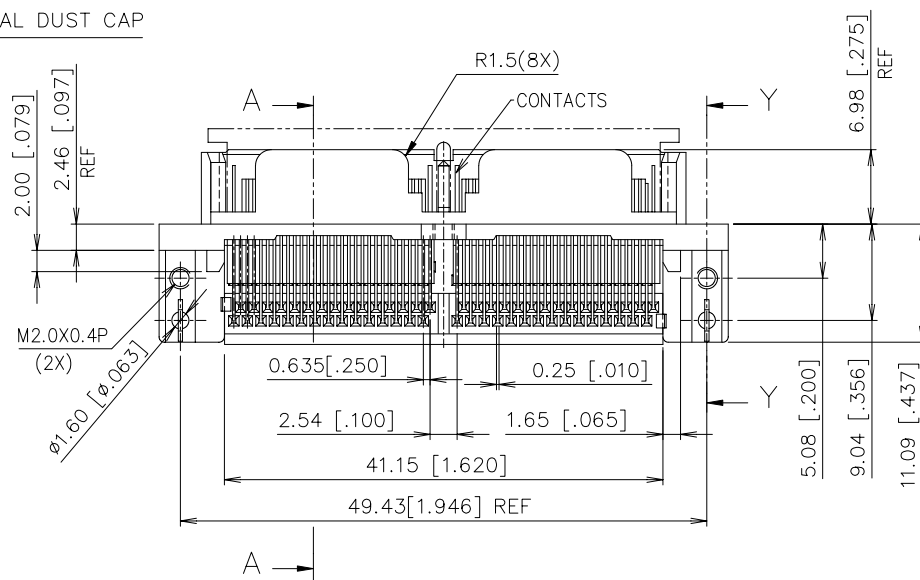
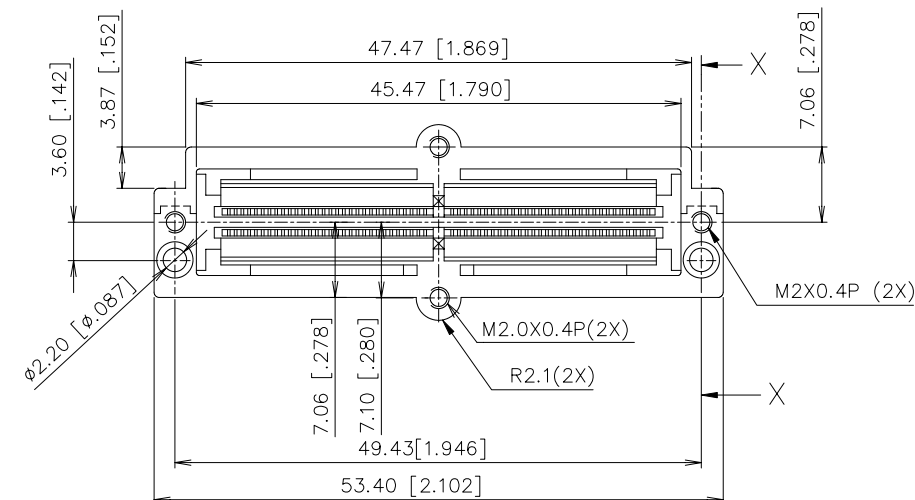
PRODUCT NO.	DUST CAP
94359-006/006LF	NO
94359-006A/006ALF	YES



SEC. X-X



SEC. A-A



SEC. Y-Y

[illegible]

Tous droits strictement reserves. Reproduction ou communication a des tiers interdite sous quelque forme que ce soit sans autorisation ecrite du Propriete de c FCI. Droits de reproduction FCI.



All rights strictly reserved. Reproduction or issue to third parties in any form whatever is not permitted without written authority from the proprietor.

PRODUCT NO.  
94359

NOTES:

- 1. P/N'S WITH SUFFIX "LF" ARE LEAD FREE P/N'S
- 2. PACKING STANDARD GS-14-920 WILL BE APPLIED FOR LEAD FREE P/N'S
- 3. FOR LEAD FREE P/N, THE PRODUCT MEET EUROPEAN UNION DIRECTIVES AND OTHER COUNTRY REGULATION AS DESCRIBED IN GS-22-008
- 4. FOR LEAD FREE P/N, THE HOUSING WILL WITHSTAND EXPOSURE TO 260°C PEAK TERMERATURE FOR 40 SECONDS IN A CONVECTION, INFRO-RED OR VAPOR PHASE REFLOW OVEN.

mat'l. code				tolerances unless otherwise specified				CUSTOMER COPY				www.fciconnect.com			
litr	ecr no	dr	date	linear	.00±.13/.000±.005				projection	title MICROPAX 120P R/A PLUG					
S					.000±.051/.0000±.0020										
					angles	0°±2°									
				dr	BENNY CHEN	06/30/98	MM/INCH		product family MICROPAX	code					
				enr	BENNY CHEN	06/30/98	←→			size dwg no		sheet			
				chr	H C LIOU	06/30/98	scale			A3 94359		14of			
				appd	JENN TSAO	06/30/98									
sheet index		revision sheet													