

Ordering number FP13030_LISA2-M-CLIP

Family	Lisa2	FWHM	(simulated) 27
Type	Assembly	Efficiency	(simulated) 0 %
LED	XT-E	cd/Im	-
Color	Black	Gerber File	Available
Diameter	9.9 mm		
Height	6.8 mm		
Style	Round		
Optic Material	PMMA		
Holder Material	PC		
Fastening	Clips, glue		
Status	Ready		

Ordering number FP13028_LISA2-M-PIN

Family	Lisa2	FWHM	(simulated) 27
Type	Assembly	Efficiency	(simulated) 0 %
LED	XT-E	cd/Im	-
Color	Black	Gerber File	Available
Diameter	9.9 mm		
Height	6.8 mm		
Style	Round		
Optic Material	PMMA		
Holder Material	PC		
Fastening	Pin, glue		
Status	Ready		

Ordering number FP13031_LISA2-W-CLIP

Family	Lisa2	FWHM	32 degrees
Type	Assembly	Efficiency	84 %
LED	XT-E	cd/Im	2.200
Color	Black	Gerber File	Available
Diameter	9.9 mm		
Height	6.8 mm		
Style	Round		
Optic Material	PMMA		
Holder Material	PC		
Fastening	Clips, glue		
Status	Ready		

Ordering number FP13025_LISA2-W-PIN

Family	Lisa2	FWHM	32 degrees
Type	Assembly	Efficiency	84 %
LED	XT-E	cd/Im	2.200
Color	Black	Gerber File	Available
Diameter	9.9 mm		
Height	6.8 mm		
Style	Round		
Optic Material	PMMA		
Holder Material	PC		
Fastening	Pin, glue		
Status	Ready		

**Ordering number FP13029_LISA2-WW-CLIP**

Family	Lisa2	FWHM	47 degrees
Type	Assembly	Efficiency	84 %
LED	XT-E	cd/Im	1.100
Color	Black	Gerber File	Available
Diameter	9.9 mm		
Height	6.8 mm		
Style	Round		
Optic Material	PMMA		
Holder Material	PC		
Fastening	Clips, glue		
Status	Ready		

Ordering number FP13026_LISA2-WW-PIN

Family	Lisa2	FWHM	47 degrees
Type	Assembly	Efficiency	84 %
LED	XT-E	cd/Im	1.100
Color	Black	Gerber File	Available
Diameter	9.9 mm		
Height	6.8 mm		
Style	Round		
Optic Material	PMMA		
Holder Material	PC		
Fastening	Pin, glue		
Status	Ready		

NOTE: The typical divergence will be changed by different color, chip size and chip position tolerance. The typical total divergence is the full angle measured where the luminous intensity is half of the peak value.



PRODUCT DATASHEET

Lisa2 series

last update 7/9/2012

GENERAL INFORMATION

- Product series especially designed & optimized for XT-E series of LEDs.
- Special care taken to make light distribution as uniform as possible.
- Lens material optical grade PMMA with high UV and temperature resistance (105 degrees of Celcius / 220 degrees of Fahrenheit). Allows use of high current and temperature conditions.

Please find more information about used material from below:

http://ledil.fi/sites/default/files/Documents/Technical/Material/PMMA%20N%20UL94_Yellow%20Card.pdf

<http://ledil.fi/sites/default/files/Documents/Technical/Material/PMMA%20N%20PLEXIGLAS-Datasheet.pdf>

- Optic holder molded by high quality PC material (120 dergees of Celcius / 248 degrees of Fahrenheit).

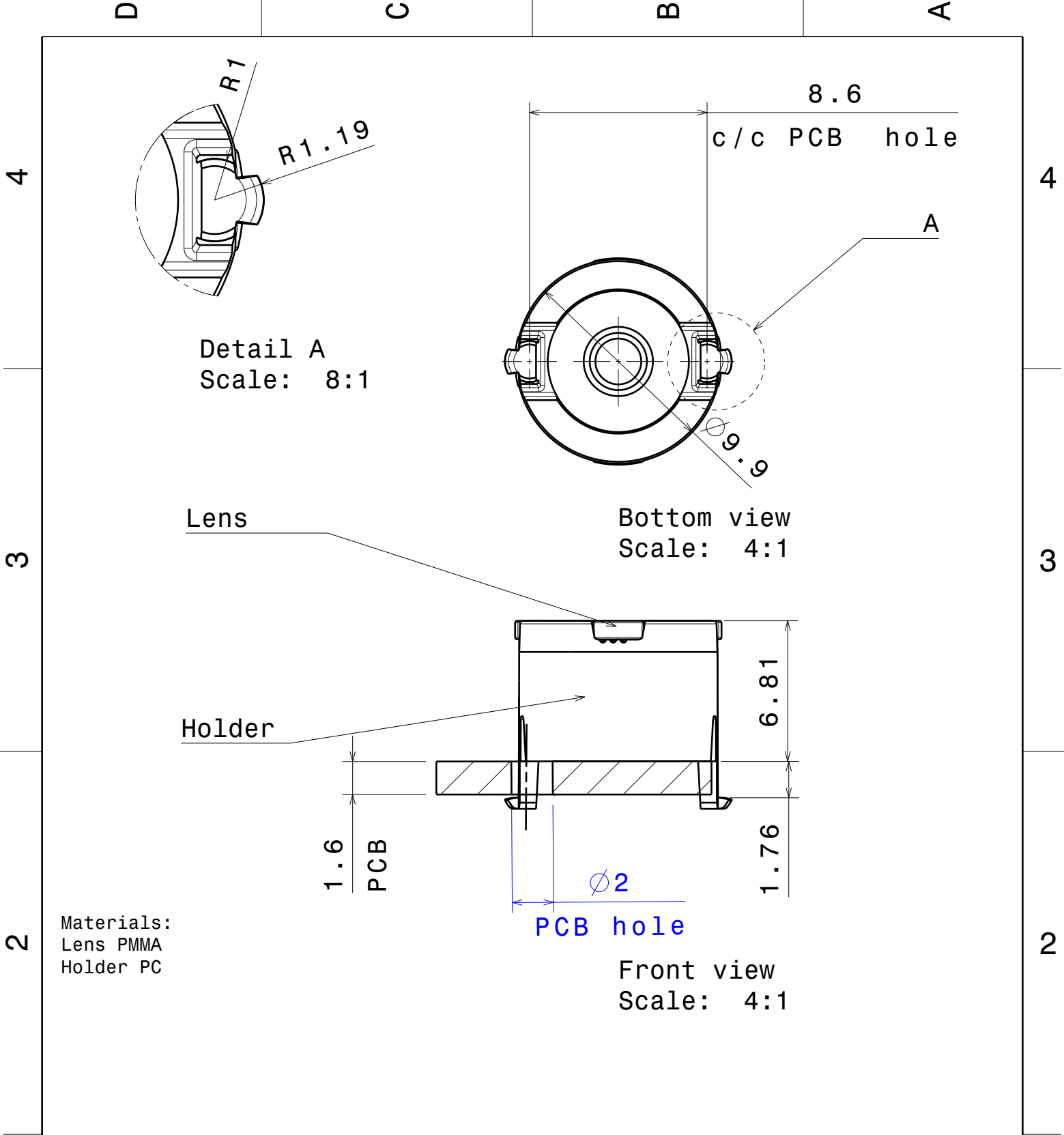
- Fastening to PCB with appropriate adhesive. By clicking link below you can find Ledil recommended glue options.

http://www.ledil.com/datasheets/DataSheet_GLUES.pdf

NOTE 1: We advise customer to ensure the suitability and sufficiency of the bond in the end product. For example, mechanical stress, vibration and holes on the surface of the circuit board weaken the strength of the glue.

NOTE 2: All surfaces where glue is applied must be clean, dry and free from grease and dirt. If cleaning of PCB surfaces is needed, please follow strictly the cleaning instructions of your LED manufacturer -this is important as cleaning shall under no circumstances damage LEDs or other electronics components on the PCB.

Further note that optical components shall not be cleaned with any chemicals - only micro fiber cloth may be used to remove fingerprints or other traces from handling.



This drawing is our property.
It can't be reproduced
or communicated without
our written agreement.



Ledil Oy
Salorankatu 10
FIN-24240 SALO
Finland

DRAWING TITLE

Datasheet Lisa2-clip16-XT series Assy

DRAWN BY
pl

DATE
20.06.2012

CHECKED BY
sn

DATE
20.7.2011

SIZE
A4

DRAWING NUMBER

REV
1

DESIGNED BY
pl

DATE
20.06.2012

SCALE

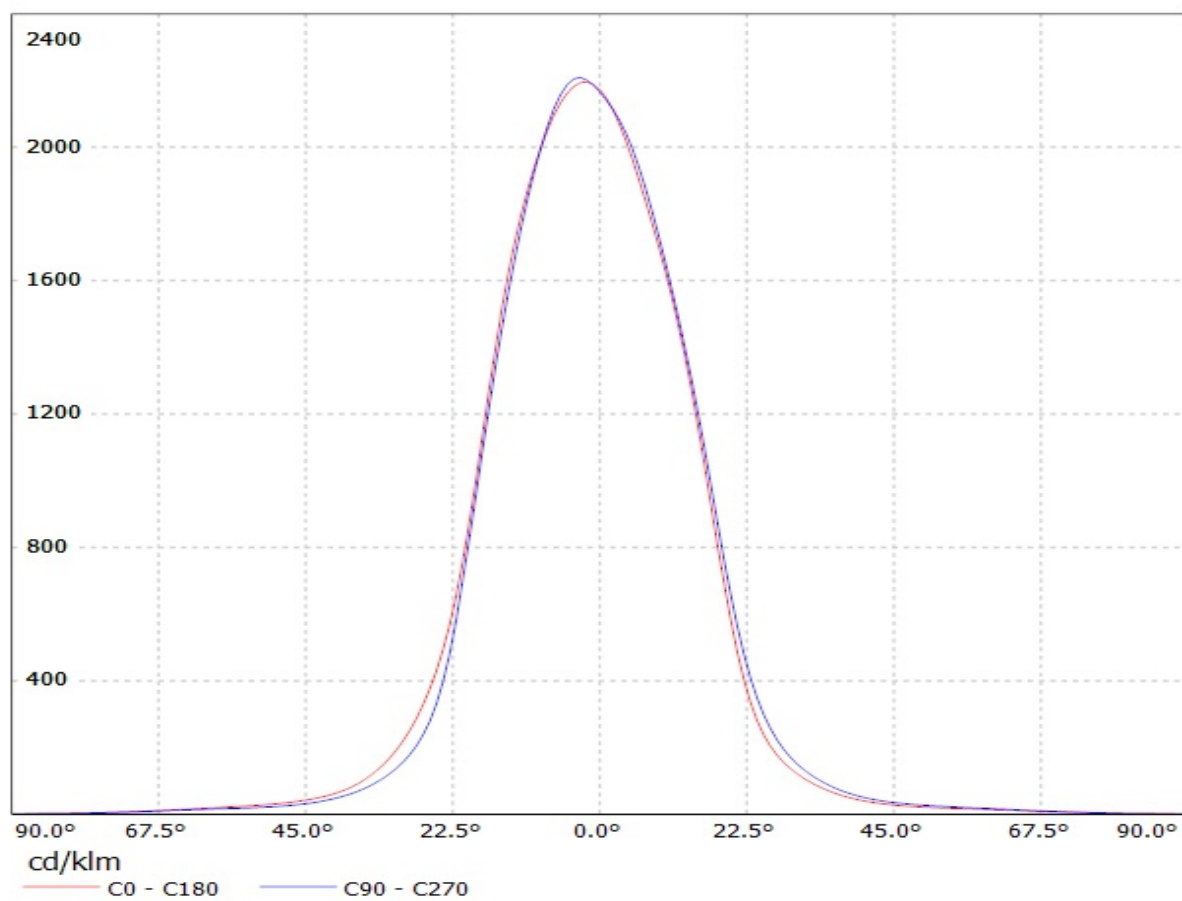
4:1

WEIGHT (g)

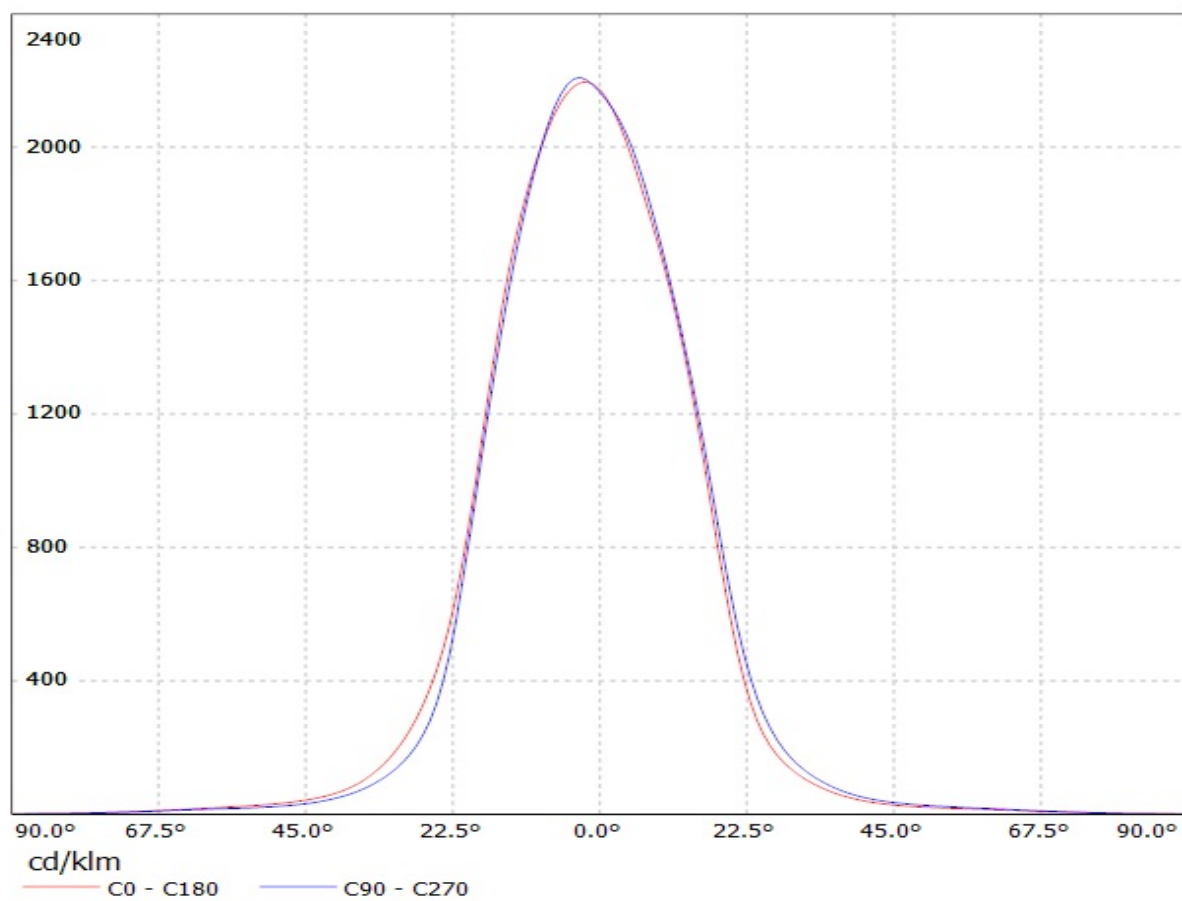
SHEET

1 / 1

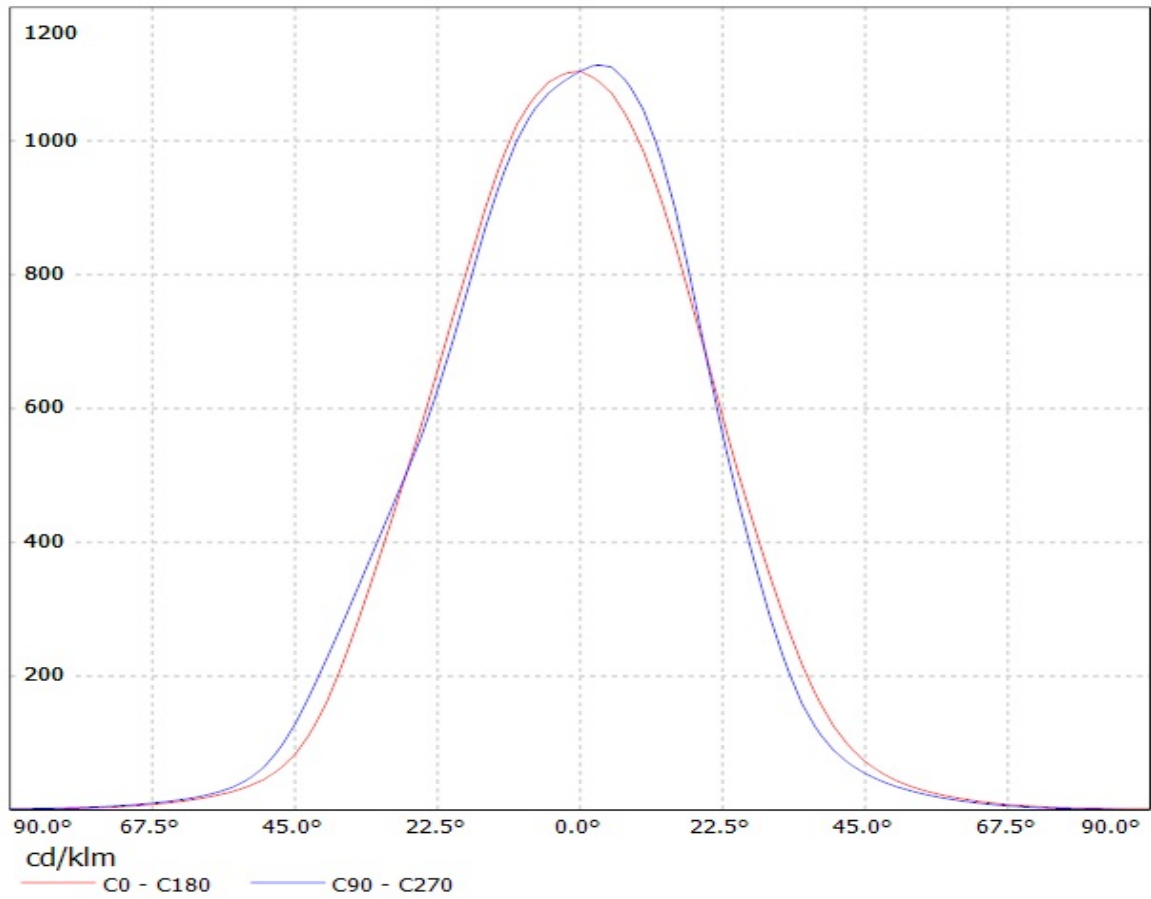
Luminaire: LEDIL OY FP13025_LISA2-W-PIN & FP13031_LISA2-W-CLIP-XTE (Cree XT-E 98lm @ 250mA) Efficiency=84%
Lamps: 1 x CREE XT-E (98.9lm)



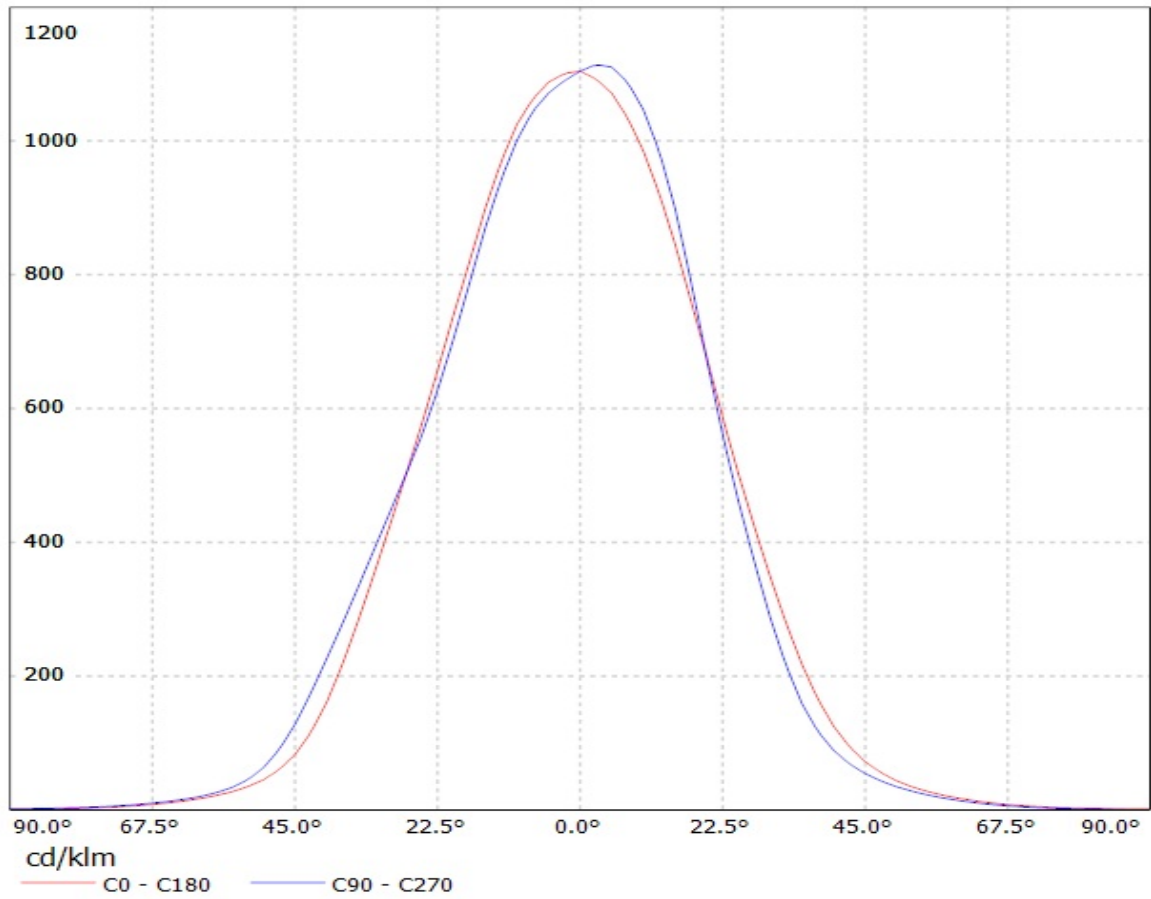
Luminaire: LEDIL OY FP13025_LISA2-W-PIN & FP13031_LISA2-W-CLIP-XTE (Cree XT-E 98lm @ 250mA) Efficiency=84%
Lamps: 1 x CREE XT-E (98.9lm)



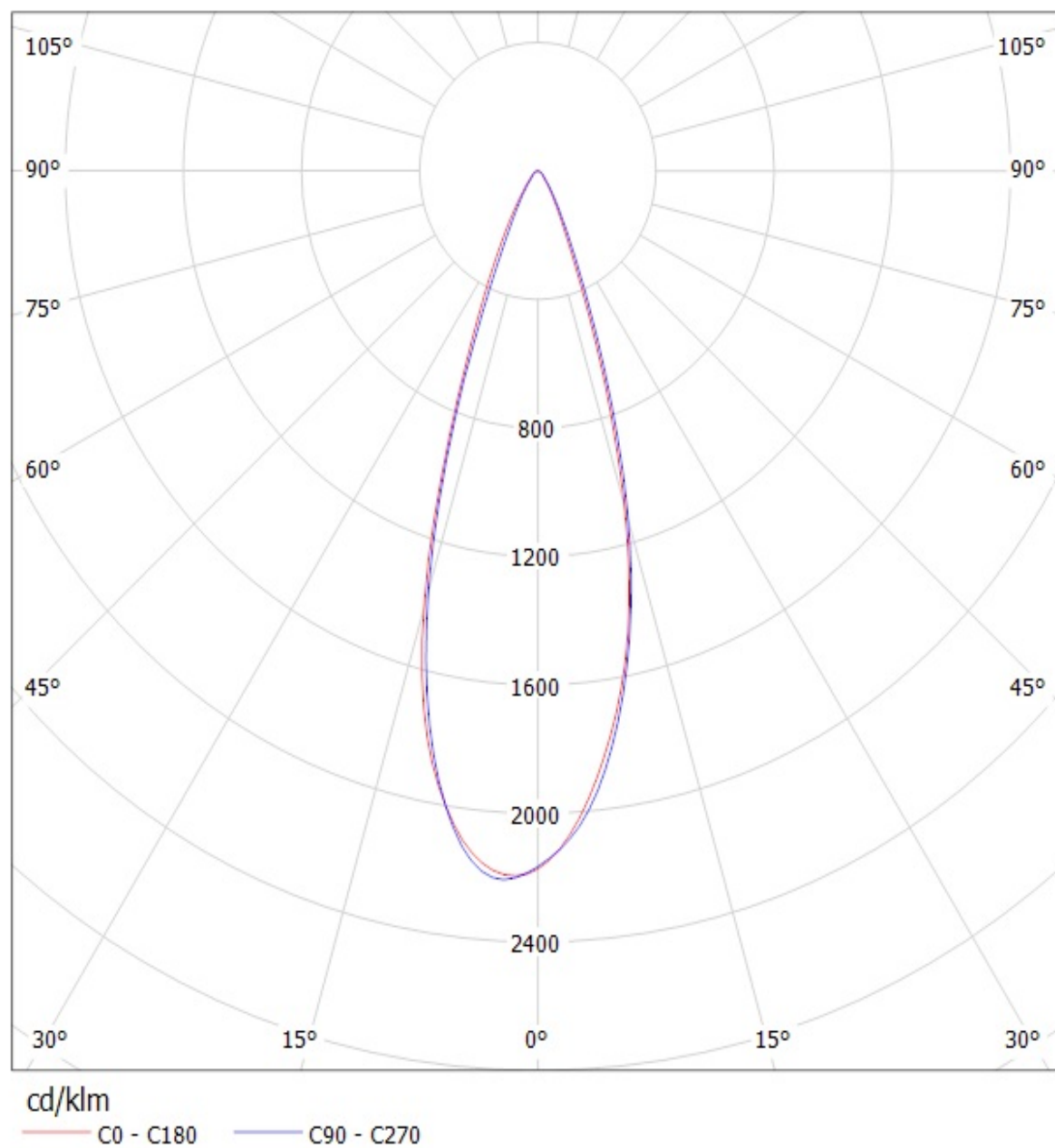
Luminaire: LEDIL OY FP13026_LISA2-WW-PIN & FP13029_LISA2-WW-CLIP-XTE (Cree XT-E 98lm @ 250mA) Efficiency=84%
Lamps: 1 x CREE XT-E (98.9lm)



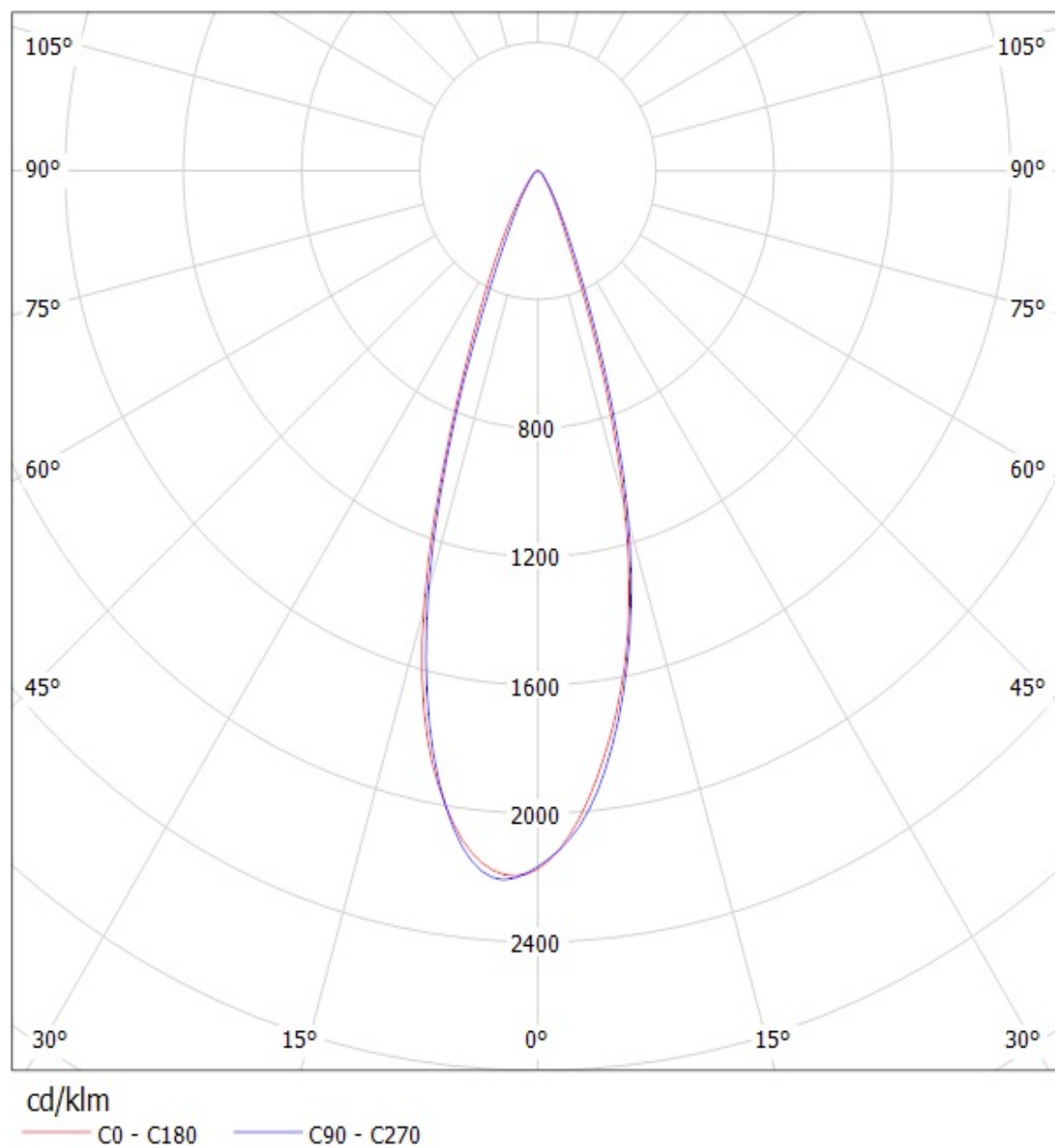
Luminaire: LEDIL OY FP13026_LISA2-WW-PIN & FP13029_LISA2-WW-CLIP-XTE (Cree XT-E 98lm @ 250mA) Efficiency=84%
Lamps: 1 x CREE XT-E (98.9lm)



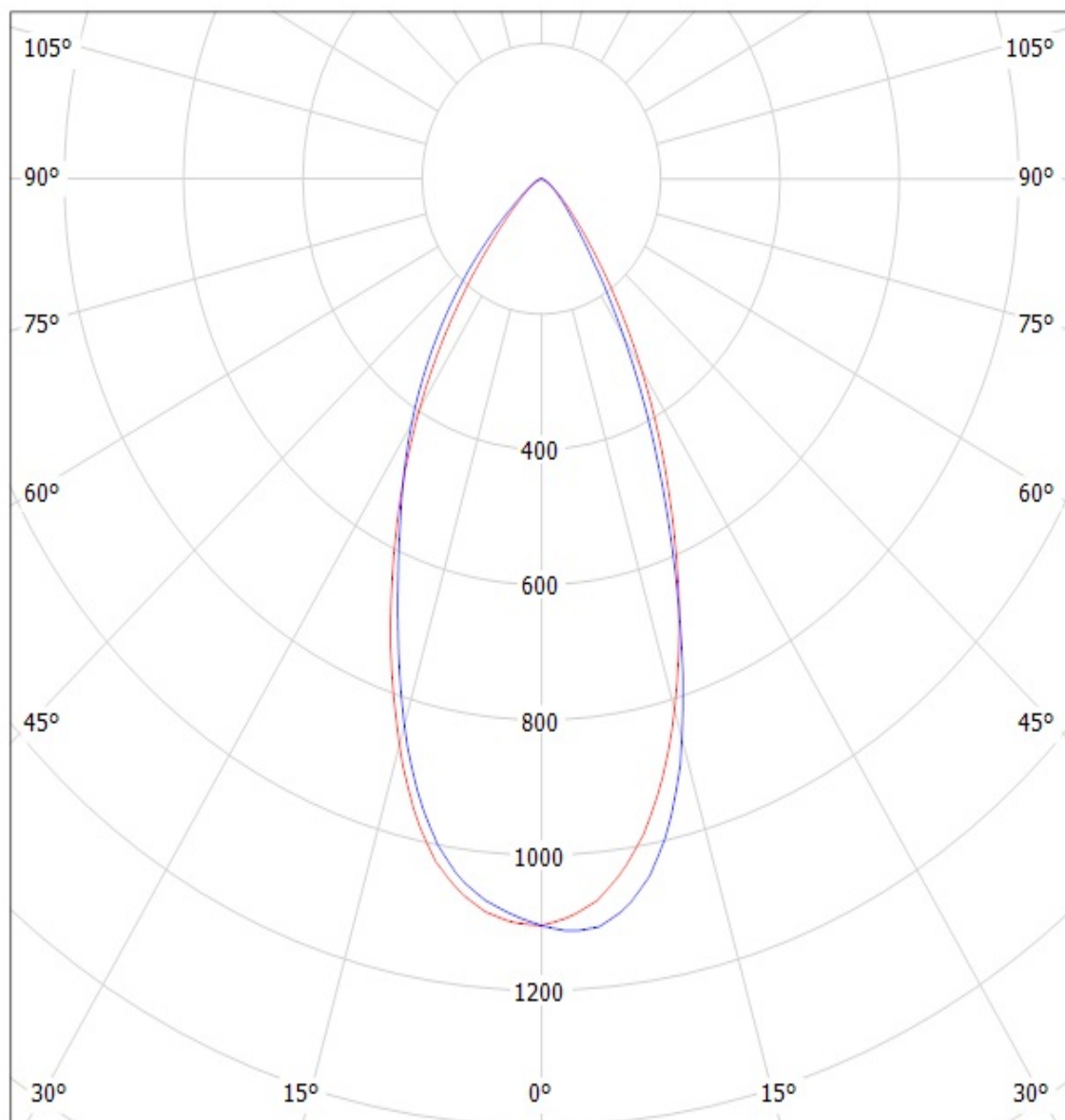
Luminaire: LEDIL OY FP13025_LISA2-W-PIN & FP13031_LISA2-W-CLIP-XTE (Cree XT-E 98lm @ 250mA) Efficiency=84%
Lamps: 1 x CREE XT-E (98.9lm)



Luminaire: LEDIL OY FP13025_LISA2-W-PIN & FP13031_LISA2-W-CLIP-XTE (Cree XT-E 98lm @ 250mA) Efficiency=84%
Lamps: 1 x CREE XT-E (98.9lm)



Luminaire: LEDIL OY FP13026_LISA2-WW-PIN & FP13029_LISA2-WW-CLIP-XTE (Cree XT-E 98lm @ 250mA) Efficiency=84%
Lamps: 1 x CREE XT-E (98.9lm)

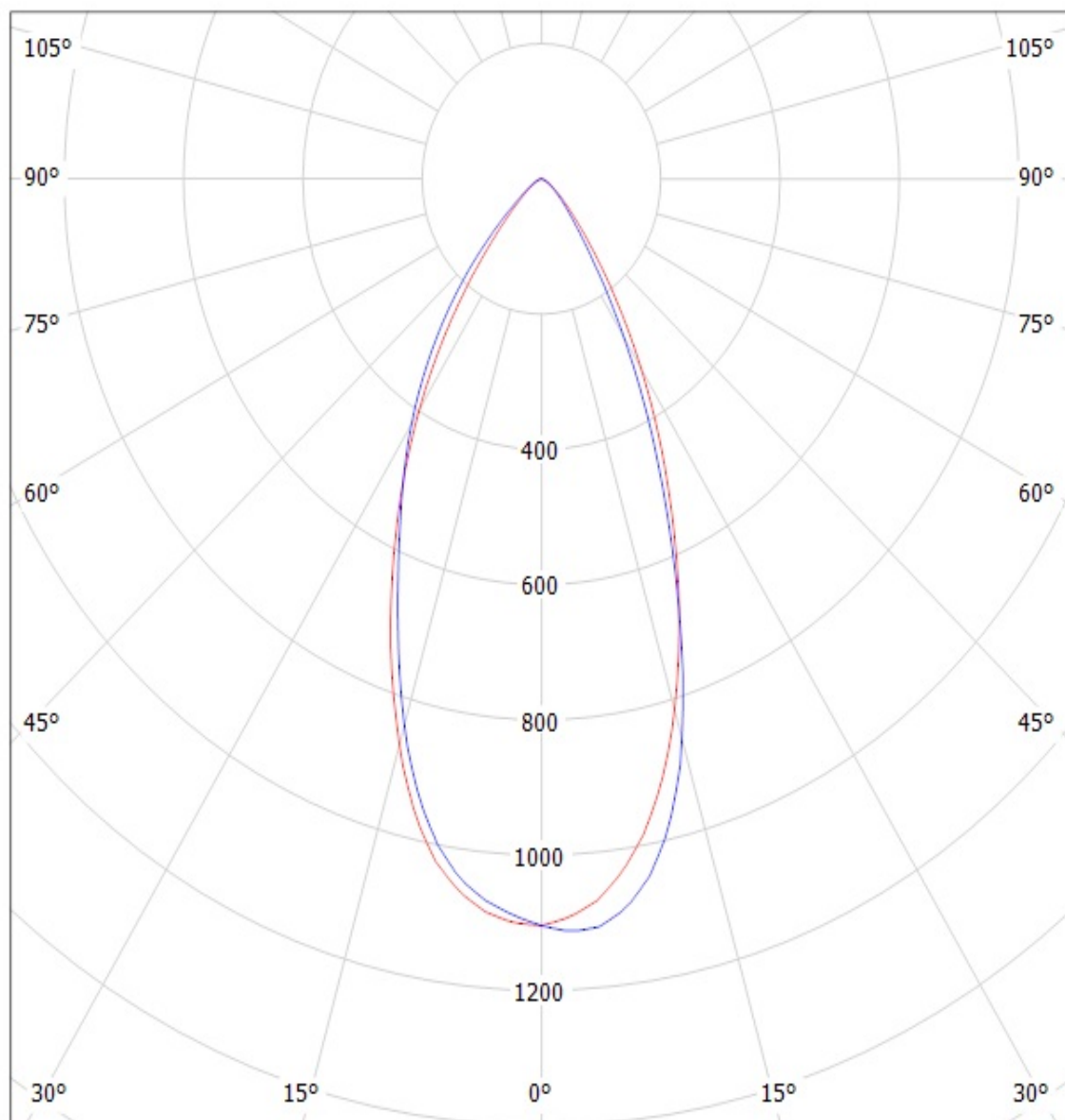


cd/klm

— C0 - C180

— C90 - C270

Luminaire: LEDIL OY FP13026_LISA2-WW-PIN & FP13029_LISA2-WW-CLIP-XTE (Cree XT-E 98lm @ 250mA) Efficiency=84%
Lamps: 1 x CREE XT-E (98.9lm)



cd/klm

— C0 - C180

— C90 - C270