



520

-

530

# LED - Product family CODIX 520-530

Pulse counters, Positioning displays, Tachos, Time Meters and combinations, Digital display with analogue inputs

- LED Display with very high luminosity and 8 mm height
- DIN housing 48 x 24 mm
- 6 digit display
- Easy programming with only 2 buttons



3.97.3  
(ed. 04.98)



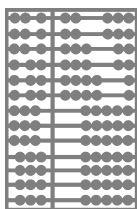
# Always the right choice...

Our family principle: The right device for almost every application



## Highlights:

- 48 x 24 mm DIN Housing (with bezel for panel cut-out 50 x 25 mm)
- 6 digit LED-display with very high luminosity (529 and 530 only 5 digits)
- Character height: 8 mm
- Easy programming with only 2 buttons
- Connection with screw terminal
- IP 65 (front)
- Input pulse-shape variable (Schmitt Trigger characteristics)



how many....

### **CODIX 520**

#### **Simple Totaliser**

- Display range 0..999 999 with leading zero blanking
- Overflow condition will be indicated by displaying the count value without leading zero blanking
- Count frequency up to 10 kHz (can be damped to 30 Hz in set up)
- SET-key resets the counter to zero (can be disabled in set up)
- one count input
- one reset input
- **Order code:**  
6.520.012.300

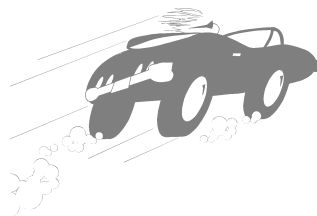


where is....

### **CODIX 521**

#### **Totaliser and Position indicator**

- Display range -199 999..0..999 999 with leading zero blanking
- Overflow condition will be indicated by flashing of the displayed count value with a frequency of 1 Hz (up to one decade over- or under-flow won't cause pulse losses)
- Count frequency up to 10 kHz (can be damped to 30 Hz in set up)
- SET-key resets the counter to set value (can be disabled in set up)
- 2 count inputs
- one reset input
- Scaling factor (0.00001...99.9999)
- Option: optocoupler output if count value  $\leq 0$
- Counting with direction input, differential counting, counting with quadrature input (also with pulse doubling)
- **Order code:**  
6.521.011.300 (with optocoupler output)  
6.521.012.300 (without optocoupler output)

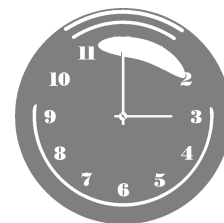


how fast is....

### **CODIX 522**

#### **Frequency meter and Tachometer**

- Display range 0..999 999 with leading zero blanking
- Indication in 1/s or 1/min (programmable)
- Overflow condition will be indicated by flashing of the displayed count value with a frequency of 1 Hz
- Count frequency up to 10 kHz (can be damped to 30 Hz in set up)
- 1 count input
- Operating principle: period duration measurement (average value at high frequencies)
- Option: optocoupler output if frequency  $f=0$  (e.g. *no operation* indicator)
- Scaling factor (0.00001...99.9999)
- **Order code:**  
6.522.011.300 (with optocoupler output)  
6.522.012.300 (without optocoupler output)



how long takes....

### **CODIX 523**

#### **Time meter**

- Display range 0..999 999 with leading zero blanking
- Active counting will be indicated by flashing of the lowest digit's decimal point.
- Timing in s, min, h or h.min.s (programmable)
- Decimal point fixes the resolution
- Resolution: 0.001 s !
- SET-key resets the counter to zero (can be disabled in the set up)
- Gate, Start and Stop via two inputs (programmable)
- one reset input
- Operating mode: hour meter or short-time meter (depending on resolution)
- Option: optocoupler output (e.g. *operation* indicator)
- **Order code:**  
6.523.011.300 (with optocoupler output)  
6.523.012.300 (without optocoupler output)

**CODIX 525****Totaliser and Rate meter**

- Display range 0..999 999 with leading zero blanking
- Overflow condition of the rate meter will be indicated by flashing of the displayed count value with a frequency of 1 Hz; overflow condition of the totaliser will be indicated by displaying the count value without leading zero blanking
- Indication in 1/s or 1/min (programmable)
- Count frequency up to 10 kHz
- SET-key resets the totaliser to zero when displayed (can be disabled in set up)
- 2. key to switch over between the two functions
- One count input
- One reset input
- Separate scaling factors for counter and rate meter (0.00001...99.9999)
- Operating mode:  
Rate meter: period duration measurement (average value at high frequencies)
- **Order code:**  
6.525.012.300

**CODIX 526****Two Totalisers**

- Display range 0..999 999 with leading zero blanking
- Overflow condition will be indicated by displaying the count value without leading zero blanking
- Count frequency up to 10 kHz
- SET-key resets the counter to zero (can be disabled in the set up for each totaliser separately)
- 2. key for switching between counter 1 and 2
- One count input
- One reset input (programmable for each totaliser separately in set up)
- Scaling factor
- **Order code:**  
6.526.012.300

**CODIX 527****Totaliser and Time meter**

- Display range 0..999 999 with leading zero blanking
- Active counting will be indicated by flashing of the lowest digit's decimal point; overflow condition will be indicated by displaying the count value without leading zero blanking
- Totaliser: Decimal point only optical function
- Time meter: Timing in s, min, h or h.min.s (programmable) Decimal point fixes the resolution
- SET-key resets the counter to zero (can be disabled for each channel separately in set up)
- 2. key for switching between totaliser and time meter
- Count frequency up to 10 kHz
- One count input
- Gate, Start and Stop via two inputs (programmable)
- One reset input (can be disabled in set up)
- Scaling factor
- **Order code:**  
6.527.012.300

**CODIX 528****Two Time meters**

- Display range 0..999 999 with leading zero blanking
- Active counting will be indicated by flashing of the lowest digit's decimal point.
- Timing in s, min, h or h.min.s (programmable) Decimal point fixes the resolution
- SET-key resets the counter to zero (can be disabled in set up)
- 2. key for switching between time meter 1 and 2
- Gate, Start and Stop via two inputs (programmable)
- One reset input (programmable for each counter separately in set up)
- **Order code:**  
6.528.012.300

**CODIX 524****Multipurpose device**

- 521-523 in just one device. Operating mode can be programmed
- **Order code:**  
6.524.011.300 (with opto-coupler output)  
6.524.012.300

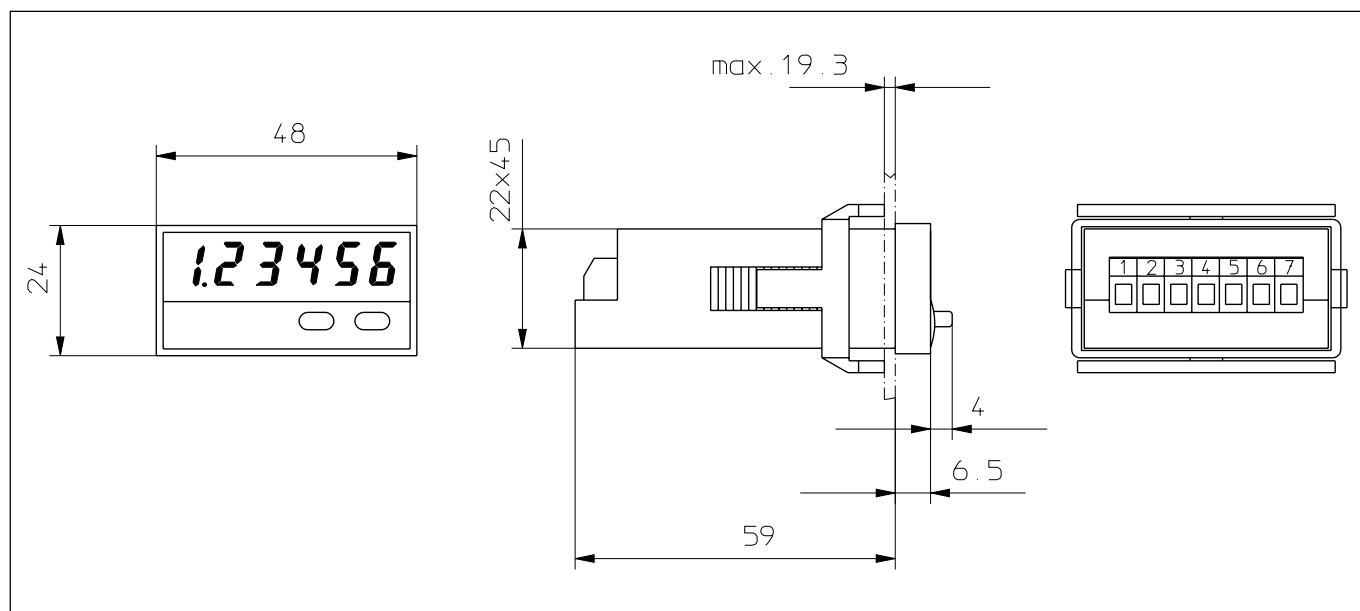
**CODIX 529****Digital Display with analogue inputs**

- Suitable for all areas where analogue measurement values have to be displayed, e.g. pressure, temperature, voltage, current...
- Display range  
-19 999..0..99 999 with leading zero blanking
  - Resolution 14 Bit
  - 5 digit display
  - Four input ranges  
(0..20 mA; 4..20 mA; 0..10 V or 2..10 V)
  - Input for voltage measuring
  - Input for current measuring
  - Programmable characteristic
  - Automatic storage of max. and min. value (can be disabled in set up)
  - Input to activate storing of displayed value (Latch)
  - **Order code:**  
6.529.012.300

**CODIX 530****Digital Display with analogue inputs and integrated totaliser**

- Example Flow-metering: displays current flow and total amount.
- Digital display to indicate analogue values and total with programmable factor
  - Display range  
-19 999..0..99 999 with leading zero blanking
  - Resolution 14 Bit
  - 5 digit display
  - Four input ranges  
(0..20 mA; 4..20 mA; 0..10 V or 2..10 V)
  - Input for voltage measuring
  - Input for current measuring
  - Programmable characteristic
  - Programmable input for either storing of displayed value (Latch) or reset for totaliser
  - Programmable hum eliminator (50/60 Hz)
  - **Order code:**  
6.530.012.300

## Dimensions:



## Electrical characteristics:

- 10...30 VDC supply voltage
- Data retention with EEPROM (1 mio. memory cycles or 10 years)
- Noise immunity acc. to EN 50081-2; EN 55011 class B; EN 50082-2
- Ambient temperature -10 °C ... +50 °C
- Input sensitivity: low: 0 VDC...0.2 x supply voltage  
high: 0.6 x supply voltage...30 VDC
- Input resistance 10 kΩ
- Max. switching capacity of optocoupler output: 10 mA at 30 VDC
- Polarity of inputs: programmable for all inputs in common
- Accuracy of tachometer: 0.1%
- Accuracy of time meter: 50 ppm