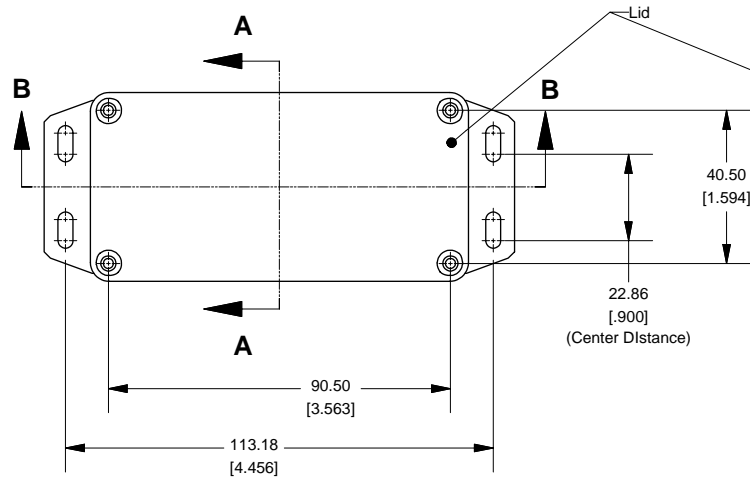
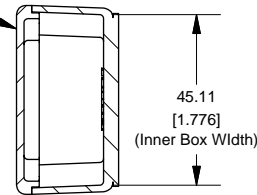


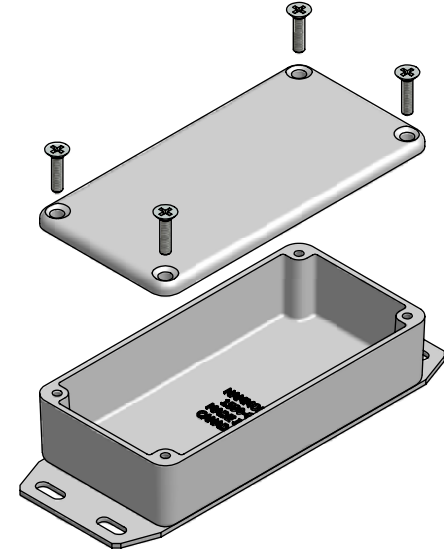
Top View of Assembly



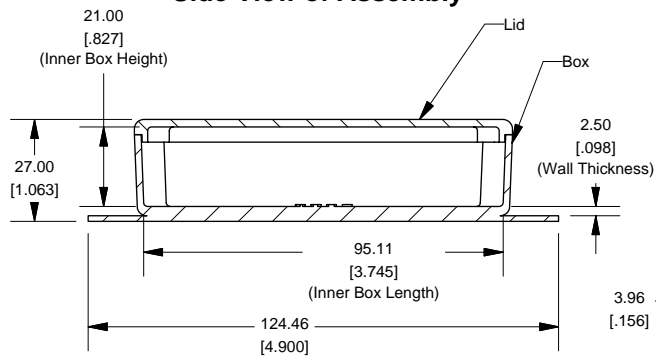
SECTION A-A
End View of Assembly



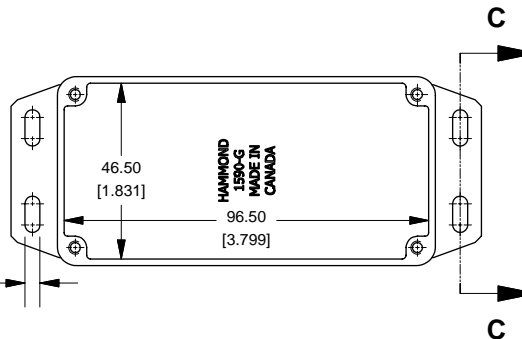
Series 1590GFL (Flanged Lid)



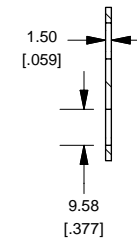
SECTION B-B
Side View of Assembly



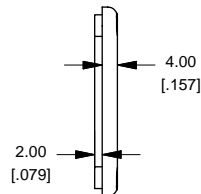
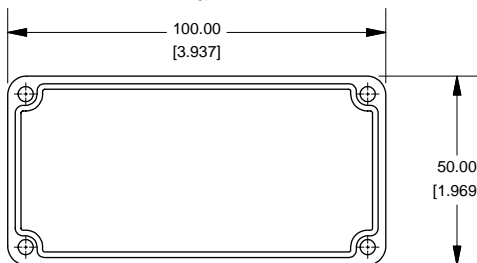
Top View Looking Inside Box



SECTION C-C
Side View of Slot



Lid



NOTE

Purchased assembly includes box, lid and 4 cover screws.
Box and lid are made from Diecast Aluminum Alloy (alloy type 360.1).
Flanges are made from Stamped Aluminum 5052-H32

PART NUMBERS

1590GF Enclosure	
Unfinished	1590GF
Black Textured Powder Paint	1590GFBK
1590GF Liquid Resistant Enclosure (Silicon Factory Installed Gasket)	
Unfinished	1590WGF
Black Textured Powder Paint	1590WGFBK
ACCESSORIES	
Unfinished	
Cover Screws (Pkg 100)	
[6-32 x 1/2" Nickel Plated Screws]	1590MS100
Black Textured Powder Paint	
Cover Screws (Pkg 50)	
[6-32 x 1/2" Stainless Steel Black Screws]	1590MS50BK



www.hammondmfg.com