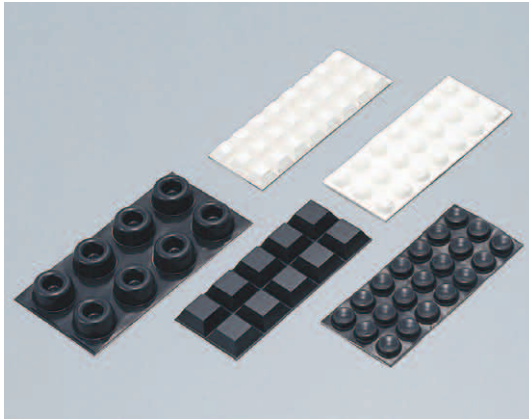


# TM-166 Non Skid Bumper

PRODUCT



## Characteristic

1. High friction coefficient to make it an excellent abrasive.
2. No crack or hardening since it is made of elastic material having excellent durability.
3. Excellent on abrasion-resistance.
4. It has shock buffer and shock damping effects
5. Fixing is as easy as just peeling the separate film off since rubber pressure sensitive adhesive is put on the base.

## Application

Measuring instruments / Telecommunication devices / Computers /  
Office automation appliances / Home appliances / Furniture / Toys / Medical instruments, etc.

Model No.	A	B	Color	Net Weight (g)	Code No.	
TM-166-3	φ 11.2	5.1	Black	0.4	5831	
TM-166-12	φ 12.7	3.6		0.5	5832	
TM-166-27	φ 16	7.9		1.3	5833	
TM-166-17	φ 19.1	9.7		2.1	5834	
TM-166-9	φ 22.4	10.2		4.1	5835	
TM-166-8	□ 12.7	3		0.6	5836	
TM-166-18		5.8		0.8	5837	
TM-166-23	□ 20.6	7.6		3.1	5838	
TM-166-514		13.2		4.8	5839	
TM-166-3W	φ 11.2	5.1	White	0.4	5847	
TM-166-8W	□ 12.7	3		0.6	5848	
TM-166-12W	φ 12.7	3.6		0.5	5849	
TM-166-18W	□ 12.7	5.8		0.8	5850	
TM-166-701	φ 12.7	3.6	Black	0.5	5761	
TM-166-7	□ 10.4	2.5		0.3	5762	
TM-166-705	□ 32.4	6.4		6.9	5763	
TM-166-23W	□ 20.6	7.6	White	3.1	5764	

## Product Construction and Its Specification

Base	Polyurethane
Pressure Sensitive Adhesive	Rubber
Allowance	±0.5

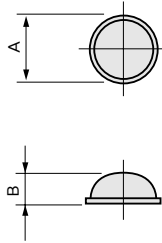
## Typical Physical Properties

Property	Test Method	Test Result
Hardness, Shore A	ASTM D 2240	70
Kinetic Coefficient of Friction	ASTM D 1894	
	Stainless Steel	1.3
	Glass	1.3
	Phenol Plywood	1.2
	Vinyl Floor Tile	0.9
	Wood	0.8
Dielectric Strength	ASTM D 1000	200V/0.025mm
Abrasion Resistance	ASTM C 501 Tabor H18 1kg	1.8g/1000 Cycles
Tensile Strength	ASTM D 412 (DieA)	400N/cm <sup>2</sup> (40.8kgf/cm <sup>2</sup> )
Elongation	ASTM D 412 (DieA)	150%
Stain Resistance	JIS K 6403 (1981) Appendix 3.3.1	48 hours. None observed.
Stain Transfer Resistance	JIS K 6403 (1981) Appendix 3.3.2	48 hours. None observed.

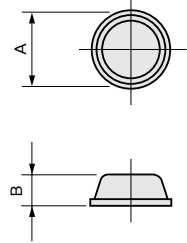
## Adhesive Shear Strength with Various Surfaces

Material	N/cm <sup>2</sup> (kgf/cm <sup>2</sup> )
Stainless Steel	39 (3.98)
Aluminum	33 (3.36)
Glass	41 (4.18)
Acrylic Resin	
High Density Polystyrene	24 (2.45)
Polyethylene	34 (3.47)
ABS	33 (3.36)
Polypropylene	
Polycarbonate	38 (3.87)

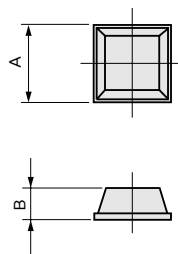
TM-166-3,3W



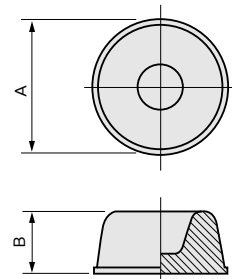
TM-166-12,12W



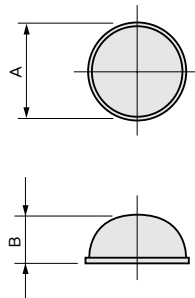
TM-166-8,8W  
TM-166-18,18W  
TM-166-23,23W



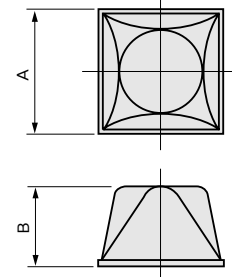
TM-166-9



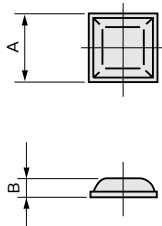
TM-166-17  
TM-166-27



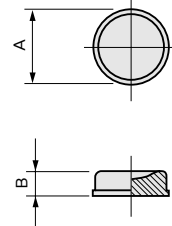
TM-166-514



TM-166-7  
TM-166-705



TM-166-701



Test Method: After 24 hours leaving of 25mm square cut TM-182-808 onto the test plate surface pressed by 2kg roller with one round trip, the peeling off strength toward shear direction was measured with speed of 300mm/min and the value was converted into unit of cm<sup>2</sup>. The same adhesive is used for TM-182-808 and TM-166.