

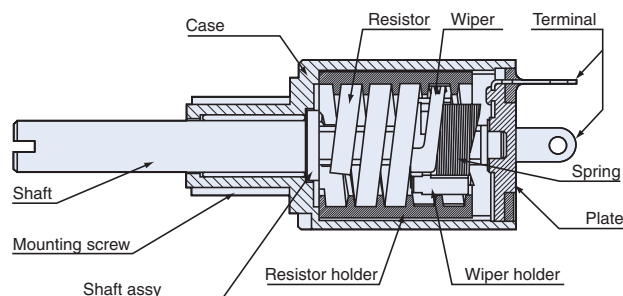
## CONDUCTIVE PLASTIC 3 TURNS TYPE

## MC series

RoHS compliant



## Basic construction



## Conductive plastic 3 turns type

## FEATURES

- Compact size
- Fine setting is possible
- Long life
- High following characteristics
- High resolution (Essentially infinite)

## PART NUMBER DESIGNATION

MC1003-000-502

Series name

Nominal resistance value ( $\Omega$ )

502 : 5 k  
 103 : 10 k  
 203 : 20 k

## LIST OF PART NUMBERS

Nominal resistance value ( $\Omega$ )	Part number
5 k	MC1003-000-502
10 k	MC1003-000-103
20 k	➡ MC1003-000-203

Verify the above part numbers when placing orders.

The products indicated by ➡ mark are manufactured upon receipt of order basis.

## ■ STANDARD SPECIFICATIONS

## ● Electrical characteristics

Nominal resistance value	5 kΩ, 10 kΩ, 20 kΩ
Resistance tolerance	± 20 %
Resolution	Essentially infinite
Power rating	0.19 W
Independent linearity	± 1 %
Effective electrical angle	1080°
Temp. coefficient resistance	± 400 ppm/°C maximum
Insulation resistance	1000 MΩ (at DC250 V) minimum
Dielectric strength	500 V rms (1 min)

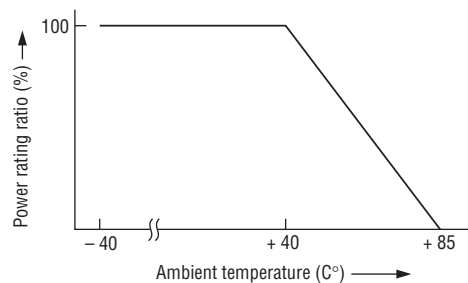
## ● Mechanical characteristics

Mechanical angle	1080° ± 10°
Stop strength	4.41 N·cm {0.45 kgf·cm} maximum
Operating torque	0.294 N·cm {30 gf·cm} maximum
Rotational life	1 million cycles
Tighten screw torque	49 N·cm {5 kgf·cm} maximum

## ● Environmental characteristics

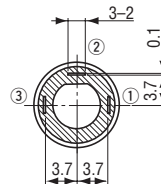
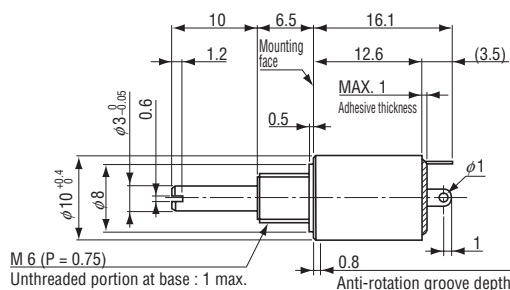
Operating temp. range	-40 ~ 85 °C
Net weight	Approx. 2.5 g

## ■ RATED POWER DERATING CURVE

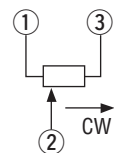


## ■ OUTLINE DIMENSIONS

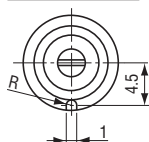
(Unit: mm)



### Wiring diagram



### Anti-rotation details



## <Accessories>

