

ALE

Washable

RoHS Compliant

Standard Lever & Rocker Switches

UL

■ Features

1. High reliability

The twin-contact clip mechanism is employed for the contact section to ensure high reliability.

2. Process sealed structure

All types of the switch feature the completely sealed structure.

3. Designed for dry circuit applications

Since the contacts are gold-plated, the switches are best suited for use in the dry circuit areas.

4. Designed for PC board applications

The terminal pitches are all in inch size (2.54 mm).

5. Improved operability

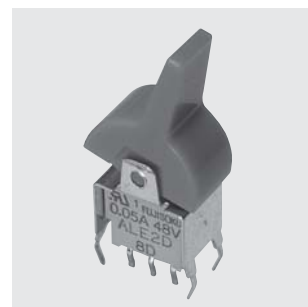
The independent detent structure provides a light operating touch.

6. All models are of UL approved type.

(File No. E42375)

■ Specifications

Rating	Max : 50mA 60VAC/DC Min : 1μA 20mVAC/DC
Initial contact resistance	50mΩ max. (1.5mA 200μVAC)
Dielectric strength	250VAC 1 minute
Insulation resistance	500MΩ min. (500VDC)
Electrical life	10,000 cycles at maximum rating 50,000 cycles at 0.4VA min. (D,E type) 30,000 cycles at 0.4VA min. (F,G,H type)
Operating temperature range	-20~+85°C
Storage temperature range	-40~+85°C



■ Part Numbering

A LE 2 D - 2 M 4 - 10 - Z

Series code	Actuator shape	Number of poles	Switching function	Terminal style	Actuator shape	Bushing style	Clip mechanism
-------------	----------------	-----------------	--------------------	----------------	----------------	---------------	----------------

Code	Type
LE	Lever and rocker type

Fig.	Number of poles
1	1 pole
2	2 poles

Code		Switching function
D	N	ON — ON
E	P	ON—OFF—ON
F	R	ON — (ON)
G	S	(ON)—OFF—(ON)
H	T	ON—OFF—(ON)

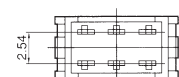
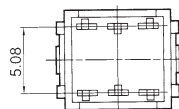
Fig.	Terminal style
2	PC Straight
5	Right angle (0.2inch pitch)

Code	Actuator shape
M	Standard

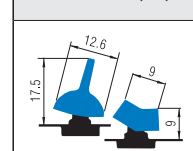
Fig.	Bushing style
4	With bracket

Distance between two terminal rows : 5.08mm (0.2")

Terminal line for double poles are 2.54mm (0.1")



■ Actuator Shape

Standard (**M**)

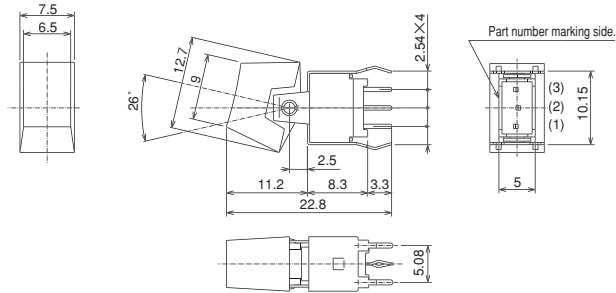
APE (Standard Lever & Rocker Switches)

SPDT

PC Straight



(Mount with **Rocker**)



Terminal numbers are not shown on the bottom of the switch.

Switching function Part No.	Viewed from part No. and rating marking side		
ALD1D-2M4-10-Z	ON	—	ON
☆ALD1E-2M4-10-Z	ON	OFF	ON
☆ALD1F-2M4-10-Z	ON	—	(ON)
☆ALD1G-2M4-10-Z	(ON)	OFF	(ON)
☆ALD1H-2M4-10-Z	ON	OFF	(ON)
Connecting terminals	2-3	—	2-1

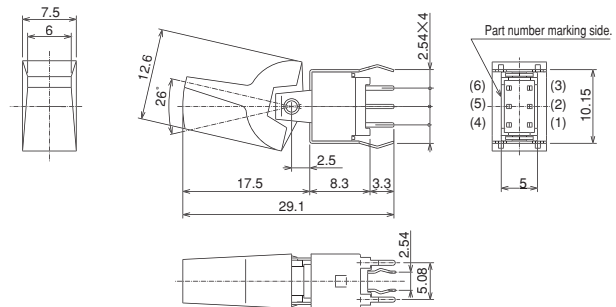
DPDT

PC Straight



(Mount with **Lever**)

Distance between two terminal rows : 2.54 mm

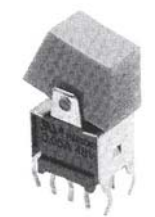


Terminal numbers are not shown on the bottom of the switch.

Switching function Part No.	Viewed from part No. marking side		
☆ALD2D-2M4-10-Z	ON	—	ON
▲ALD2E-2M4-10-Z	ON	OFF	ON
▲ALD2F-2M4-10-Z	ON	—	(ON)
▲ALD2G-2M4-10-Z	(ON)	OFF	(ON)
▲ALD2H-2M4-10-Z	ON	OFF	(ON)
Connecting terminals	2-3 5-6	—	2-1 5-4

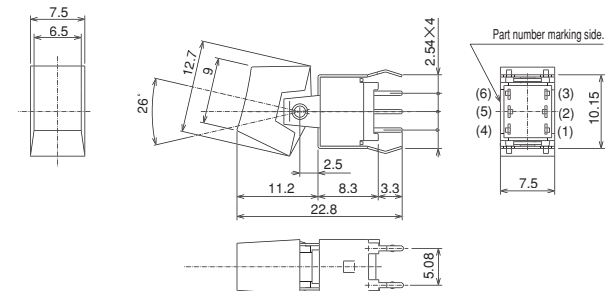
DPDT

PC Straight



(Mount with **Rocker**)

Distance between two terminal rows : 5.08 mm



Terminal numbers are not shown on the bottom of the switch.

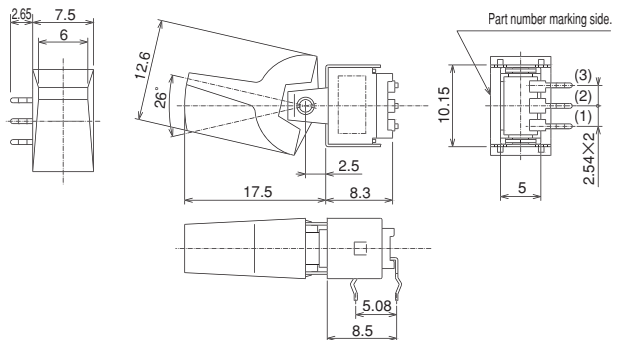
Switching function Part No.	Viewed from part No. marking side		
☆ALD2N-2M4-10-Z	ON	—	ON
▲ALD2P-2M4-10-Z	ON	OFF	ON
☆ALD2R-2M4-10-Z	ON	—	(ON)
☆ALD2S-2M4-10-Z	(ON)	OFF	(ON)
☆ALD2T-2M4-10-Z	ON	OFF	(ON)
Connecting terminals	2-3 5-6	—	2-1 5-4

SPDT

0.2R/A



(Mount with **Lever**)

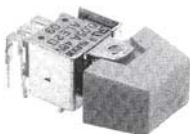


Terminal numbers are not shown on the bottom of the switch.

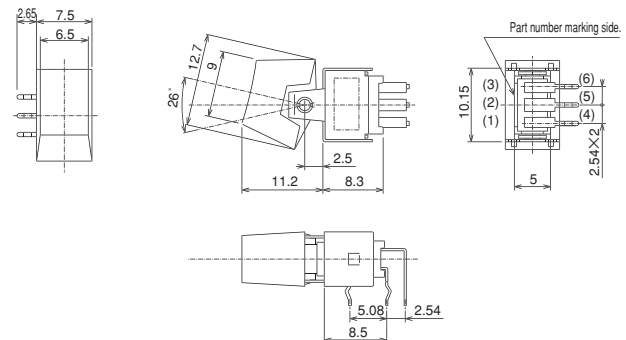
Switching function Part No.	Viewed from part No. marking side		
☆ALD1D-5M4-10-Z	ON	—	ON
▲ALD1E-5M4-10-Z	ON	OFF	ON
▲ALD1F-5M4-10-Z	ON	—	(ON)
▲ALD1G-5M4-10-Z	(ON)	OFF	(ON)
▲ALD1H-5M4-10-Z	ON	OFF	(ON)
Connecting terminals	2-3	—	2-1

DPDT

0.2R/A



(Mount with **Rocker**)



Terminal numbers are not shown on the bottom of the switch.

Switching function Part No.	Viewed from part No. marking side		
☆ALD2D-5M4-10-Z	ON	—	ON
▲ALD2E-5M4-10-Z	ON	OFF	ON
▲ALD2F-5M4-10-Z	ON	—	(ON)
☆ALD2G-5M4-10-Z	(ON)	OFF	(ON)
▲ALD2H-5M4-10-Z	ON	OFF	(ON)
Connecting terminals	2-3 5-6	—	2-1 5-4

(ON) : Momentary

▲ : Inquiry products.

☆ : Semi-standard products.

★ : Made to order products.

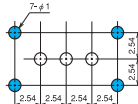
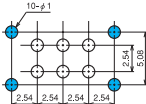
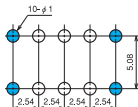
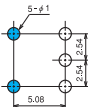
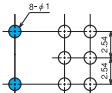
The lever and the rocker are standard accessories. Specify either of the lever or the rocker in part number.

■ PC Hole Layouts



Note: Mount the accessories of knob and lever after the soldering.

(Top view)

PC Straight	1—pole (Compact type)	
	2—poles (Compact type)	
	2—poles (Two terminal rows)	
Right angle terminal	1—pole (Compact type)	
	2—poles (Compact type)	

(2) Cleaning after soldering should be done after the terminal temperature falls to 90°C or below, or after leaving the switch for five minutes or longer at room temperature.

Diagram illustrating the dimensions of the Plastic Pack:

- Length: 231
- Width: 196
- Height: 15

The pack contains two trays, each with a 4x6 grid of wells. The text "FIMBRI-TITE" is visible on the trays.

50 pcs/pack