

4

3

2

1

THIS DRAWING IS UNPUBLISHED.

RELEASED FOR PUBLICATION

© COPYRIGHT

ALL RIGHTS RESERVED.

LOC

DIST


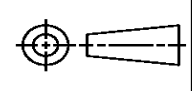
REVISIONS


P	LTR	DESCRIPTION	DATE	DWN	APVD
	C1	ECR-14-001892	13FEB2014	GK	HMR

REPLACED BY OCEAN STYLE APPLICATOR PART
NUMBER 2151456-1

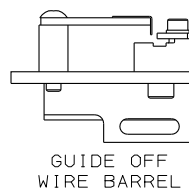
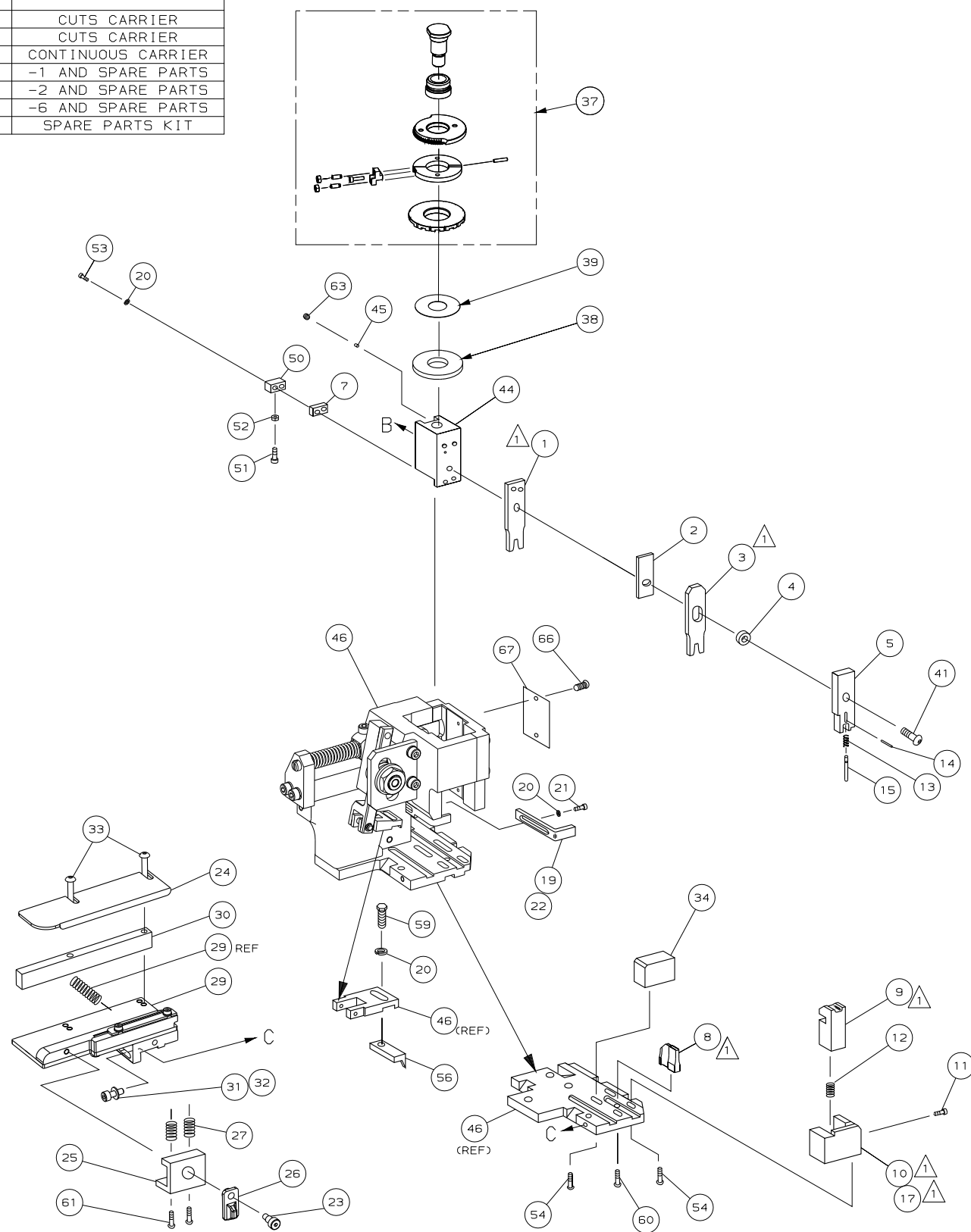
FOR REPLACEMENT PARTS FOR APPLICATOR 1528193
REFER TO ADDITIONAL PAGE(S). SPARE PARTS KIT (IF LISTED)
WILL REMAIN AVAILABLE.

THE REPLACEMENT OCEAN STYLE APPLICATOR HAS THE
SAME TERMINATOR/PRESS INTERFACE AS APPLICATOR
1528193

THIS DRAWING IS A CONTROLLED DOCUMENT.		DWN GOPALAKRISHNA HV		 TE Connectivity			
DIMENSIONS:		CHK RAGHAVENDRA					
		APVD RAGHAVENDRA		NAME FINE ADJ SIDE FD HD-I APPL			
		PRODUCT SPEC					
		APPLICATION SPEC					
MATERIAL		WEIGHT		SIZE A3	CAGE CODE	DRAWING NO C- 1528193	RESTRICTED TO
FINISH		CUSTOMER DRAWING		SCALE		SHEET 1 OF 2	REV C1



1. RECOMMENDED SPARE PARTS.
2. GREASE RAM, CAM, CAM FOLLOWER AND FEED ROD LIGHTLY.
3. LUBRICATE DAILY PER THE APPLICATOR INSTRUCTION SHEET SUPPLIED WITH THE APPLICATOR.



GUIDE OFF
WIRE BARREL

VIEW B ROTATED 180°

POST FEED 40 mm STROKE	POST FEED 30 mm STROKE	PRE FEED 30 mm STROKE	PRE FEED 40 mm STROKE
<p style="text-align: center;">(44) (REF)</p> <p style="text-align: center;">(49)</p> <p style="text-align: center;">(47)</p>	<p style="text-align: center;">(44) (REF)</p> <p style="text-align: center;">(49)</p> <p style="text-align: center;">(47)</p>	<p style="text-align: center;">(44) (REF)</p> <p style="text-align: center;">(49)</p> <p style="text-align: center;">(48)</p>	<p style="text-align: center;">(44) (REF)</p> <p style="text-align: center;">(49)</p> <p style="text-align: center;">(48)</p>

LOC
A
DIST
66

(44) (REF) (49) (47) (48)

* WARNING:

ON INSTALLATION, SET WIRE
DISC TO LARGEST WIRE SIZE
SETTING. USE OF SETTINGS
BELOW MIN REQUIRED CRIMP
HEIGHT SETTING WILL CAUSE
DAMAGE TO CRIMP TOOLING.

	-	1	1	1	1	1	1	1528193	PRINT, APPLICATOR LOG SHEET	73
	-	1	1	1	1	1	1	1338705-3	DOCUMENTATION PACKAGE	72
										71
										70
										69
	-	1	1	1	1	1	1	461264-5	PLATE, IDENTIFICATION	68
	-	2	2	2	2	2	2	21017-2	SCR,DRIVE (#2x.19) ID PLATE	67
										66
										65
										64
	-	1	1	1	1	1	1	3-18031-0	SCR,SKT SET (M6X6) RAM	63
										62
	-	2	2	2	2	2	2	1-18024-5	SCR,BHC (M5X25) DRAG	61
	-	1	1	1	1	1	1	18024-7	SCR,BHC (M4X10) ANVIL	60
	-	1	1	1	1	1	1	5-18022-2	SCR,HEX (M4X8) FEED FINGER	59
										58
										57
	-	1	1	1	1	1	1	1338685-1	PAWL, FEED	56
										55
	-	4	4	4	4	4	4	18024-8	SCR,BHC (M4x12)SHEAR HOLDER	54
	-	2	2	2	2	2	2	1-18023-3	SCR,SHC (M4x16) TERM HLD DWN	53
	-	1	1	1	1	1	1	18030-1	NUT, HEX (M3) HOLD DOWN	52
	-	1	1	1	1	1	1	811242-5	BUMPER, HOLDDOWN	51
	-	1	1	1	1	1	1	690753-2	SPACER, TONKER	50
	-	1	1	1	1	1	1	18024-3	SCR,BHC (M3X10) CAM	49
	-	-	-	-	-	-	-	1338675-1	CAM, PRE FEED 30 & 40 mm ST	48
	-	1	-	1	1	-	1	1338676-1	CAM, POST FEED 30 & 40 mm ST	47
	-	1	1	1	1	1	1	1320999-3	APPLICATOR BASIC SUBASSY	46
	-	1	1	1	1	1	1	690191-1	PLUG, NYLON	45
	-	1	1	1	1	1	1	1338660-1	RAM	44
										43
										42
	-	1	1	1	1	1	1	2-18024-6	SCR,BHC (M8X25) RAM	41
										40
	-	1	1	1	1	1	1	690125-1	SHIM SUBASSY	39
	-	1	1	1	1	1	1	469367-9	SPACER, FINE ADJUST	38
	-	1	1	1	1	1	1	879103-3	FINE ADJUST HEAD SUBASSY	37
										36
										35
	-	1	1	1	1	1	1	1320934-6	SUPPORT, TERMINAL	34
	-	2	2	2	2	2	2	1-18024-0	SCR,BHC (M4X20) STRIP GUIDE	33
	-	1	1	1	1	1	1	18027-2	WASHER, FLAT (M4)	32
	-	1	1	1	1	1	1	1-18023-2	SCR,SKT CAP (M4X12) MOUNT BLOCK	31
	-	1	1	1	1	1	1	1320908-1	SPACER, STRIP GUIDE	30
	-	1	1	1	1	1	1	1633073-1	STRIP GUIDE PLATE ASSY	29
										28
	-	2	2	2	2	2	2	1-22284-0	SPRING, DRAG	27
	-	1	1	1	1	1	1	356835-1	LEVER, DRAG RELEASE	26
	-	1	1	1	1	1	1	240792-1	DRAG, TERMINAL	25
	-	1	1	1	1	1	1	1320928-1	PLATE, STRIP GUIDE	24
	-	1	1	1	1	1	1	980371-4	SCR,SHC SHLD	23
	-	1	-	1	1	-	1	690472-2	STRIPPER	22
	-	1	1	1	1	1	1	1-18023-1	SCR,SHC (M4X10) STRIPPER	21
	-	4	4	4	4	4	4	18025-2	WASHER, LOCK (M4) STRIPPER	20
	-	-	1	-	-	1	-	690472-1	STRIPPER	19</