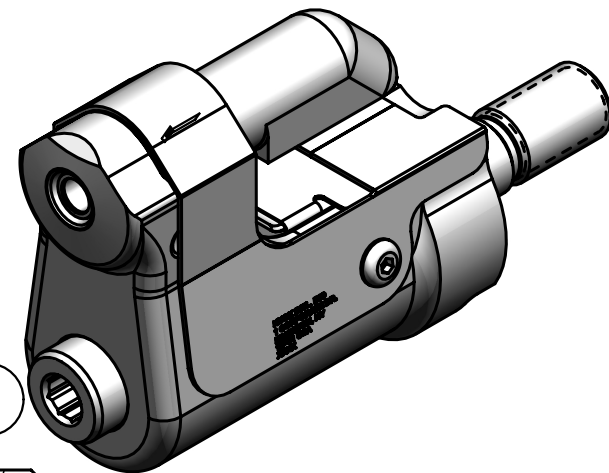
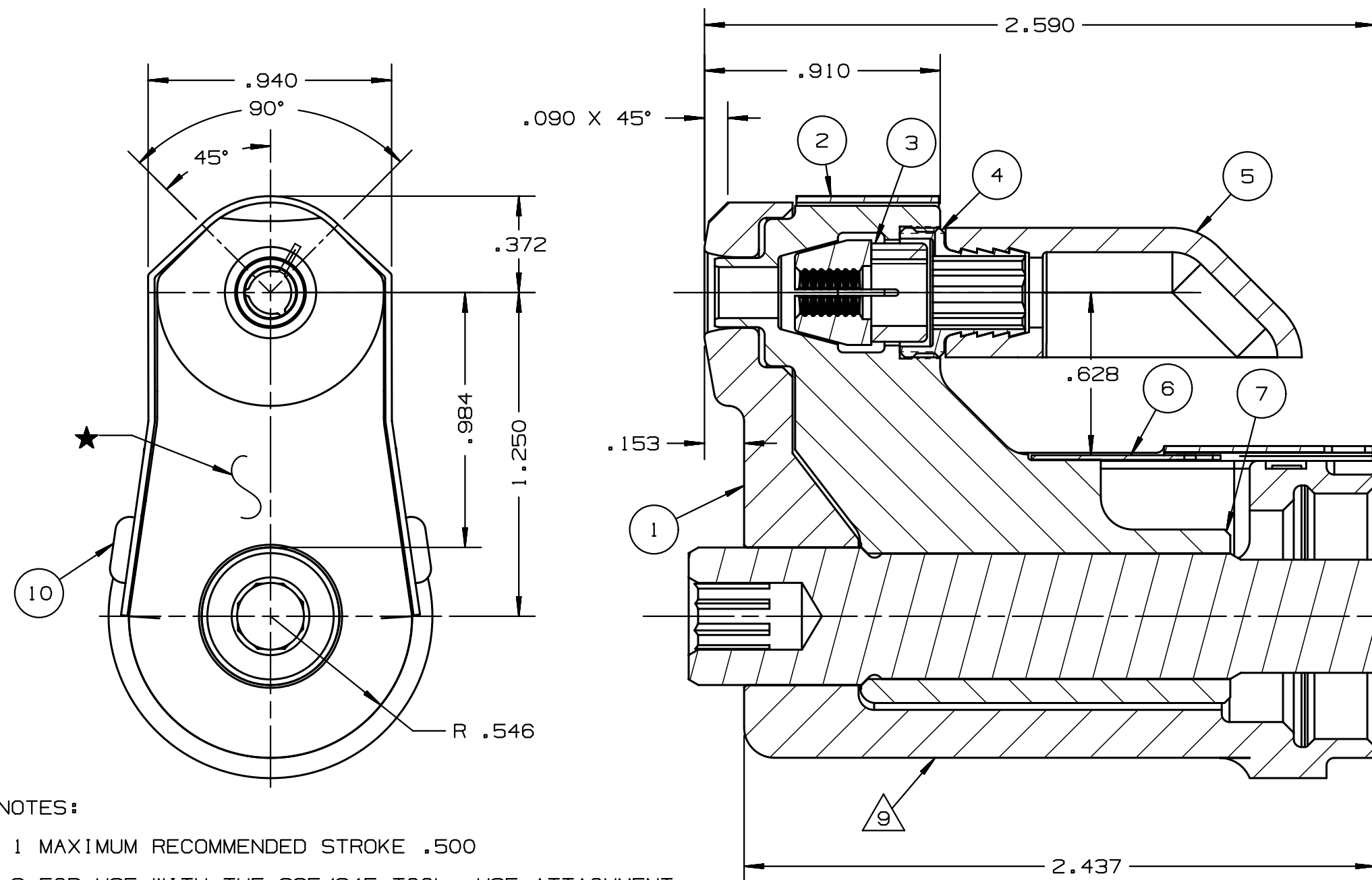


REV	DESCRIPTION	DET	DATE
G	ITEM 3, 130052 WAS 128071	EL	11/10/11
H	128505 WAS 128615, ADDED 128487	JJC	07/18/12
J	ITEM 6 126745 WAS 126746	HKS	2/6/13
K	ADDED 508511, 130322 WAS 126746, 130326 WAS 126745; ADDED VIEW; ADDED PATENT ETCH	NDG	06/03/13



NOTES:

- 1 MAXIMUM RECOMMENDED STROKE .500
- 2 FOR USE WITH THE 225/245 TOOL, USE ATTACHMENT P/N 119400-1 AND STROKE LIMITER 118362
- 3 FOR USE WITH 2500, USE ATTACHMENT P/N 119400-1 AND STROKE LIMITER KIT 119888
- 4 FOR OTHER TOOLS AND/OR OTHER TOOL AND STROKE COMBINATIONS, CONSULT ENGINEERING DEPARTMENT
- 5 SHIP WITH STOP 126747
- 6 SHIP WITH DEFLECTOR 126748-1
- 7 SHIP (2) .030 SHIMS 128290 REFERENCE PB563 FOR PROPER USE.
- 8 128615 ASSEMBLY CONSISTS OF 128505 COLLET AND 128487 DRAWBAR.
- 9 ETCH "U.S. PATENT # 6739170" WHERE SHOWN

(K)	508511	2	#6-32 B.H.C.S.	10
	128487	1	DRAWBAR	9
	126748-1	1	UNITIZED DEFLECTOR	8
(K)	128615	1	COLLET & DRAWBAR ASSY	7
	130326	1	GUARD	6
	120095	1	DEFLECTOR	5
	122912	1	BARBED RETAINER	4
(K)	130052	1	UNITIZED CHUCK JAWS	3
	130322	1	TOP GUARD	2
	127059	1	ANVIL	1
	PART NO.	QTY	DESCRIPTION	ITEM

IDENTIFICATION PER SPEC 42-311: ★ PERMANENT		HUCK INTERNATIONAL, INC., I.S.D 1 CORPORATE DR KINGSTON, NEW YORK 12401	
ITAR/ECCN: EAR99		NOSE ASSEMBLY -06 GP	
SCH B#: 8467.99.0190		FINAL ASSY: FOR USE WITH 206-375	
HTS: 8467.99.0190		ENG: MVM CK: DATE: 9/5/02 SCALE: 2:1	
		B	99-3704