

MICRO SWITCH
a Honeywell Division

FED MFG. CODE 91929

ACTUATOR-SWITCH

CATALOG LISTING

JE-73

JE-73

CATALOG LISTING

PAGE 1 OF 1

REPLACES

RELEASE NO PR-5024

M

ISSUE

6

CHECK

REVISIONS

A	085	069507
	DAW	21 FEB 91
B	RE-IN	PR21936
	J J A	5 JAN 96
C	204294	
	CSL	2 NOV 01

CHECK

8 JAN 96

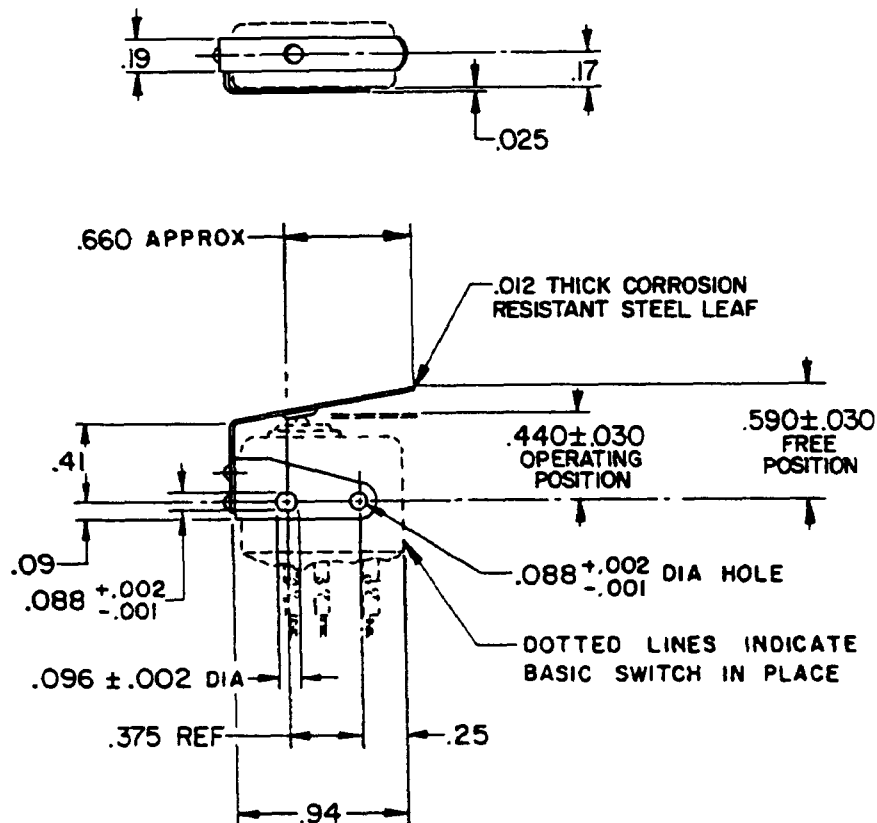
TSM

CHECK

J J A 5 JAN 96

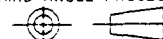
RASTER

DRAWN



THIS DRAWING COVERS A PROPRIETARY ITEM AND IS THE PROPERTY OF MICRO SWITCH A DIVISION OF HONEYWELL THIS DRAWING IS NOT TO BE COPIED OR USED WITHOUT THE APPROVAL OF MICRO SWITCH

THIRD ANGLE PROJECTION



CHARACTERISTICS	ELECTRICAL DATA	SCALE FULL	DO NOT SCALE PRINT
OPERATING FORCE ----- 12 OZ MAX	CONTACT ARRANGEMENT	ONE PLACE (0) ± .030	UNLESS OTHERWISE SPECIFIED TOLERANCES ARE
RELEASE FORCE ----- 2 OZ MIN		TWO PLACE (00) ± .015	
DIFFERENTIAL TRAVEL ---- .025 MAX		THREE PLACE (000) ± .005	
OVERTRAVEL ----- .015 MIN		ANGLES ±	
		WEIGHT	

MICRO SWITCH
a Honeywell Division

FED MFG. CODE 91929

ACTUATOR-SWITCH

CATALOG LISTING

JE-73

CATALOG LISTING
JE-73

PAGE 1 OF 1

REPLACES

RELEASE NO PR-5024

M

ISSUE
5

CHECK

REVISIONS

1	085	AC069507
2	DAW	21 FEB 91
3	RE-IN	PR21936
4	JJA	5 JAN 96

CHECK

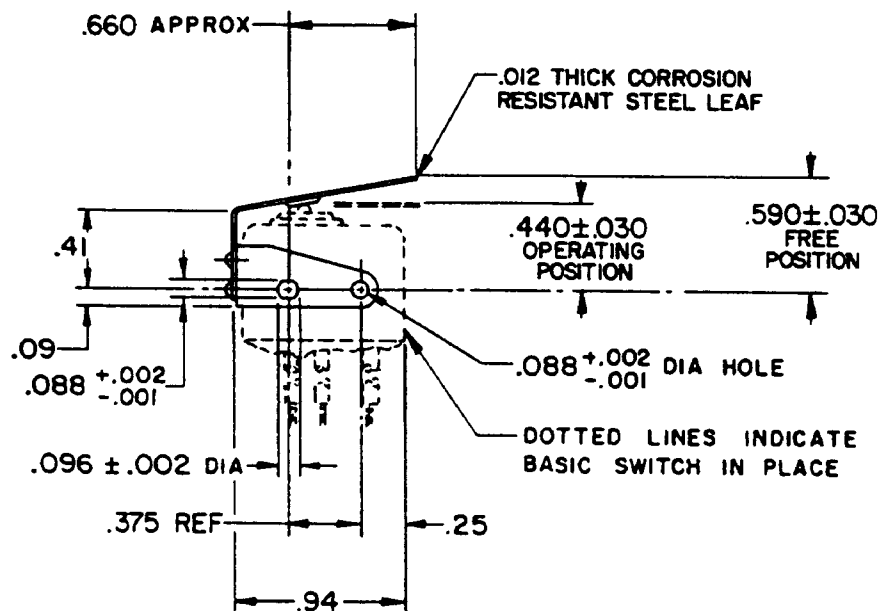
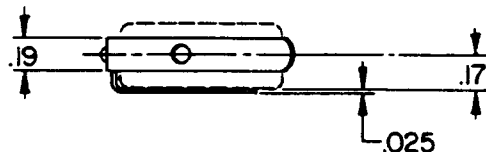
8 JAN 96

75m

CHECK

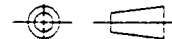
J J A 5 JAN 96

DRAWN



THIS DRAWING COVERS A PROPRIETARY ITEM AND IS THE PROPERTY OF MICRO SWITCH, A DIVISION OF HONEYWELL. THIS DRAWING IS NOT TO BE COPIED OR USED WITHOUT THE APPROVAL OF MICRO SWITCH.

THIRD ANGLE PROJECTION



CHARACTERISTICS

OPERATING FORCE ----- 12 OZ MAX
 RELEASE FORCE ----- **2 OZ MIN**
 DIFFERENTIAL TRAVEL ----- .025 MAX
 OVERTRAVEL ----- .015 MIN

ELECTRICAL DATA

CONTACT ARRANGEMENT

SCALE FULL

DO NOT
SCALE PRINT

**UNLESS OTHERWISE SPECIFIED
TOLERANCES ARE**

ONE PLACE (0) $\pm .030$

TWO PLACE (00) $\pm .015$

THREE PLACE (000) $\pm .005$

ANGLES \pm

WEIGHT

Mouser Electronics

Authorized Distributor

Click to View Pricing, Inventory, Delivery & Lifecycle Information:

[Honeywell:](#)

[JE-73](#)