

# Reversible motor driver

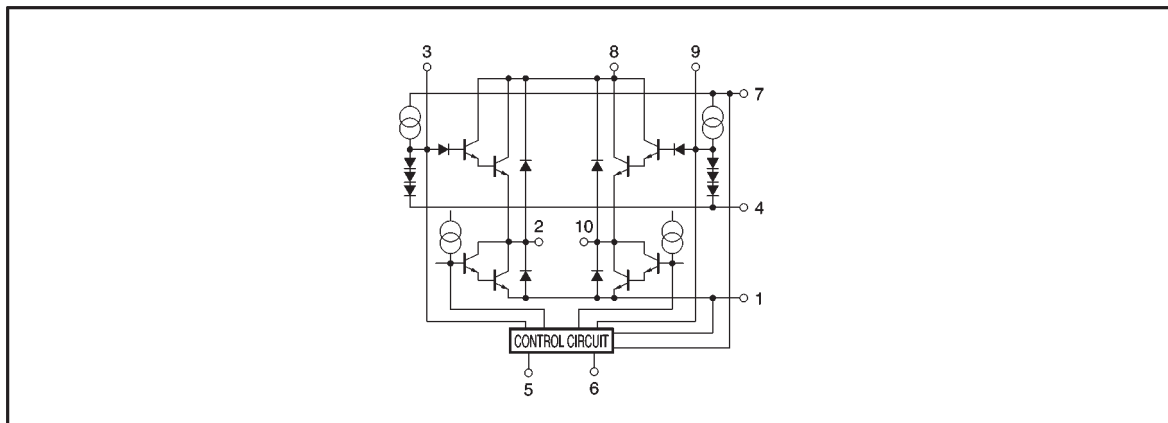
## BA6229

The BA6229 is a monolithic IC used for driving reversible motors. The ICs contain a logic section by which brake and open modes can be set and an output power transistor by which forward and reverse operations are controlled.

### ●Features

- 1) Built-in power transistor for motor driving (1.2A Max.).
- 2) Low quiescent current. ( $V_{CC}=12V$ ,  $I_Q=1mA$ )
- 3) Wide range of operating supply voltage (8 ~ 23V).
- 4) Interfaces with CMOS devices.
- 5) Four output modes: forward, reverse, stop (open), and brake.
- 6) Built-in diode absorbs surge currents.

### ●Block diagram



### ●Absolute maximum ratings ( $T_a = 25^\circ C$ )

Parameter	Symbol	Limits	Unit
Power supply voltage	$V_{CC}$	24	V
Power dissipation	$P_d$	2.2*1	W
Operating temperature	$T_{opr}$	$-25 \sim +75$	$^\circ C$
Storage temperature	$T_{stg}$	$-55 \sim +125$	$^\circ C$
Output current	$I_{OUT}$	1.2*2	A
Input voltage	$V_{IN}$	$-0.3 \sim V_{CC}$	V

\*1 Reduced by 22mW for each increase in  $T_a$  of  $1^\circ C$  over  $25^\circ C$ .

\*2 500  $\mu s$  pulse with a duty ratio of 1%.

### ●Measurement circuit

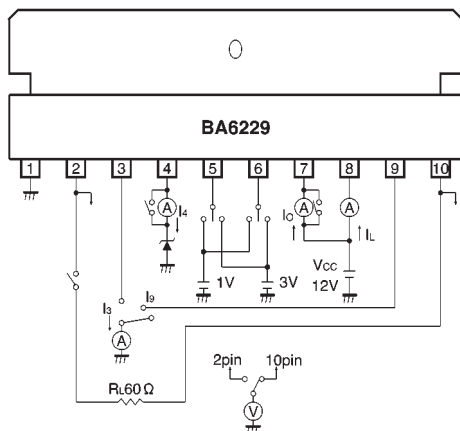


Fig.1

### ●Application example

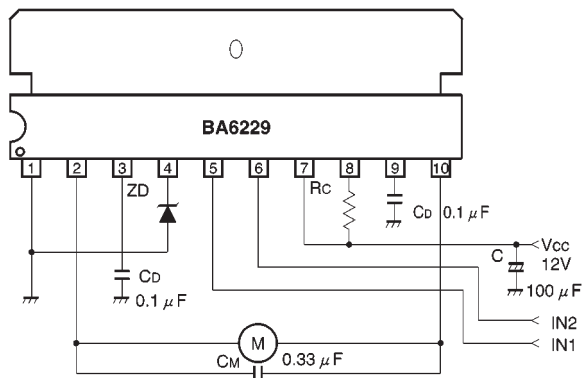


Fig.2

●Electrical characteristics (unless otherwise noted, Ta = 25°C and VCC1 = 12V)

Parameter	Symbol	Min.	Typ.	Max.	Unit	Conditions
Operating voltage 1	$V_{CC1}$	8.0	—	23	V	
Operating voltage 2	$V_{CC2}$	8.0	—	23	V	
Quiescent current	$I_Q$	—	1	3	mA	$R_L = \infty$
Input threshold voltage of pins 5 and 6	$V_T$	1	2	3	V	$R_L = \infty$
Output high level voltage for pins 2 and 10	$V_H$	6.5	7.0	8.0	V	$R_L = 60\ \Omega$ , pin5= “L”, pin6= “H” pin5= “H”, pin6= “L”
Output low level voltage for pins 2 and 10	$V_L$	—	0.8	1.2	V	$R_L = 60\ \Omega$ , pin5= “L”, pin6= “H” pin5= “H”, pin6= “L”
Output leakage current	$I_L$	—	—	500	$\mu A$	Current flowing into pin 8 when pins 5 and 6 are both HIGH or both LOW
Pin-4 bias current	$I_4$	0.3	0.7	1.8	mA	$R_L = 60\ \Omega$
Constant current of pins 3 and 9	$I_3, I_9$	0.4	0.8	2	mA	pin6= “H”, pin9=GND pin5= “H”, pin3=GND

### ●Operation notes

(1) The quality of these products have been carefully checked; however, use of the products with applied voltages, operating temperatures, or other parameters that exceed the absolute maximum rating given may result in the damage of the IC and the product it is used in. If the IC is damaged, the short mode and open modes cannot be specified, so if the IC is to be used in applications where parameters may exceed the absolute maximum ratings, then be sure to incorporate fuses, or other physical safety measures.

#### (2) Input pins

Voltage should never be applied to the input pins when the  $V_{CC}$  voltage is not applied to the IC. Similarly, when  $V_{CC}$  is applied, the voltage on each input pin should be less than  $V_{CC}$  and within the guaranteed range for the electrical characteristics.

#### (3) Back-rush voltage

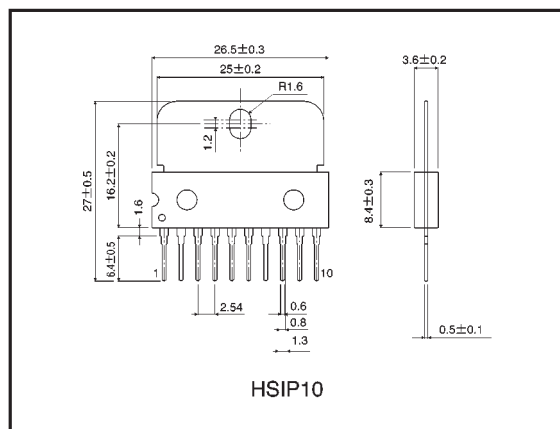
Depending on the ambient conditions, environment, or motor characteristics, the back-rush voltage may fluctuate. Be sure to confirm that the back-rush voltage will not adversely affect the operation of the IC.

#### (4) Large current line

Large currents are carried by the motor power supply and motor ground for these ICs.

Therefore, the layout of the pattern of the PC board and the constants of certain parameters for external components, such as the capacitor between the power supply and ground, may cause this large output current to flow back to the input pins, resulting in output oscillation or other malfunctions. To prevent this, make sure that the PC board layout and external circuit constants cause no problems with the characteristics of these ICs.

### ●External dimensions (Units: mm)



#### (5) Power dissipation

The power dissipation will fluctuate depending on the mounting conditions of the IC and the ambient environment. Make sure to carefully check the thermal design of the application where these ICs will be used.

#### (6) Power consumption

The power consumption by the IC varies widely with the power supply voltage and the output current. Give full consideration to the power dissipation rating and the thermal resistance data and transient thermal resistance data, to provide a thermal design so that none of the ratings for the IC are exceeded.

#### (7) ASO

Make sure that the output current and supply voltage do not exceed the ASO values.

#### (8) Precautions for input mode switching

To ensure reliability, it is recommended that the mode switching for the motor pass once through the open mode.

#### (9) In-rush current

There are no circuits built into these ICs that prevent in-rush currents. Therefore, it is recommended to place a current limiting resistor or other physical countermeasure.

#### (10) Factors regarding the thermal, power supply, and motor conditions

If the potential of the output pin sways greatly and goes below the potential of ground, the operation of the IC may malfunction or be adversely affected. In such a case, place a diode between the output and ground, or other measure, to prevent this.

### Notes

- No technical content pages of this document may be reproduced in any form or transmitted by any means without prior permission of ROHM CO.,LTD.
- The contents described herein are subject to change without notice. The specifications for the product described in this document are for reference only. Upon actual use, therefore, please request that specifications to be separately delivered.
- Application circuit diagrams and circuit constants contained herein are shown as examples of standard use and operation. Please pay careful attention to the peripheral conditions when designing circuits and deciding upon circuit constants in the set.
- Any data, including, but not limited to application circuit diagrams information, described herein are intended only as illustrations of such devices and not as the specifications for such devices. ROHM CO.,LTD. disclaims any warranty that any use of such devices shall be free from infringement of any third party's intellectual property rights or other proprietary rights, and further, assumes no liability of whatsoever nature in the event of any such infringement, or arising from or connected with or related to the use of such devices.
- Upon the sale of any such devices, other than for buyer's right to use such devices itself, resell or otherwise dispose of the same, no express or implied right or license to practice or commercially exploit any intellectual property rights or other proprietary rights owned or controlled by
- ROHM CO., LTD. is granted to any such buyer.
- Products listed in this document use silicon as a basic material.  
Products listed in this document are no antiradiation design.

The products listed in this document are designed to be used with ordinary electronic equipment or devices (such as audio visual equipment, office-automation equipment, communications devices, electrical appliances and electronic toys).

Should you intend to use these products with equipment or devices which require an extremely high level of reliability and the malfunction of which would directly endanger human life (such as medical instruments, transportation equipment, aerospace machinery, nuclear-reactor controllers, fuel controllers and other safety devices), please be sure to consult with our sales representative in advance.

#### About Export Control Order in Japan

Products described herein are the objects of controlled goods in Annex 1 (Item 16) of Export Trade Control Order in Japan.

In case of export from Japan, please confirm if it applies to "objective" criteria or an "informed" (by MITI clause) on the basis of "catch all controls for Non-Proliferation of Weapons of Mass Destruction.