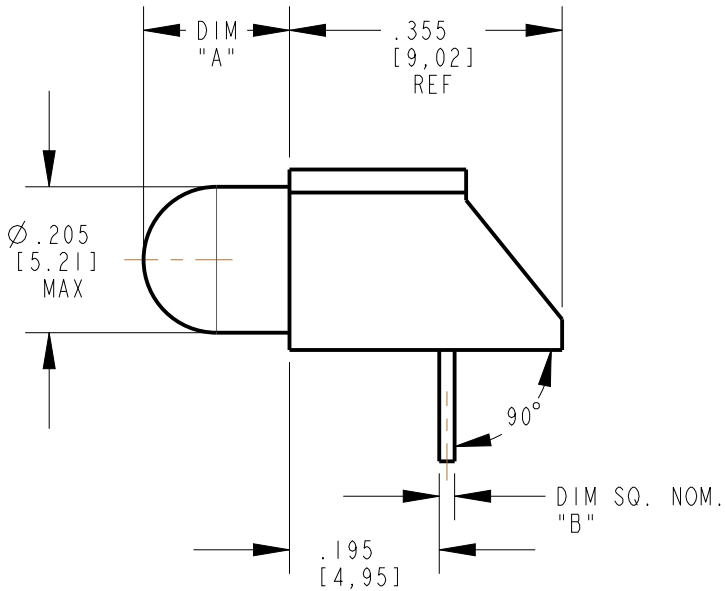
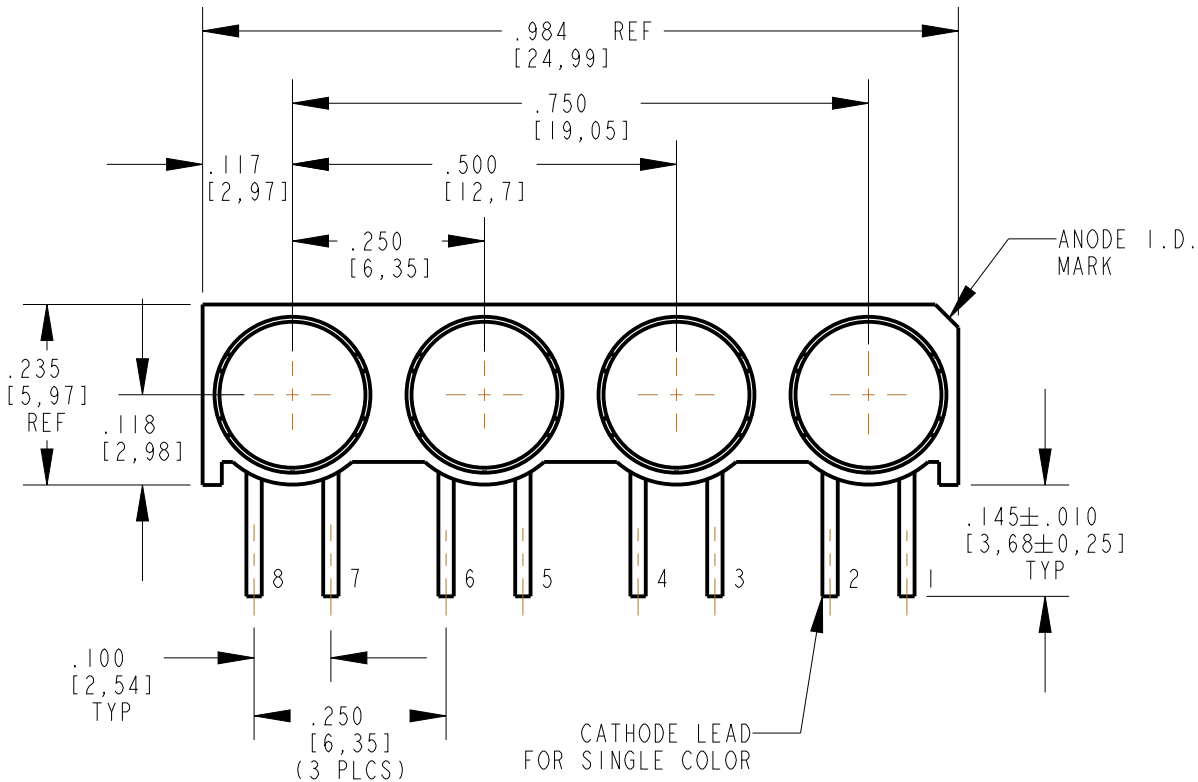
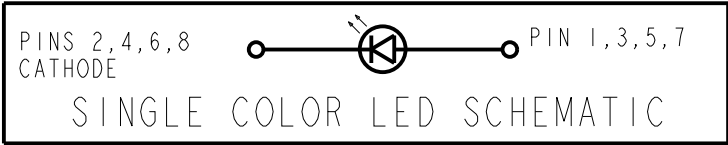
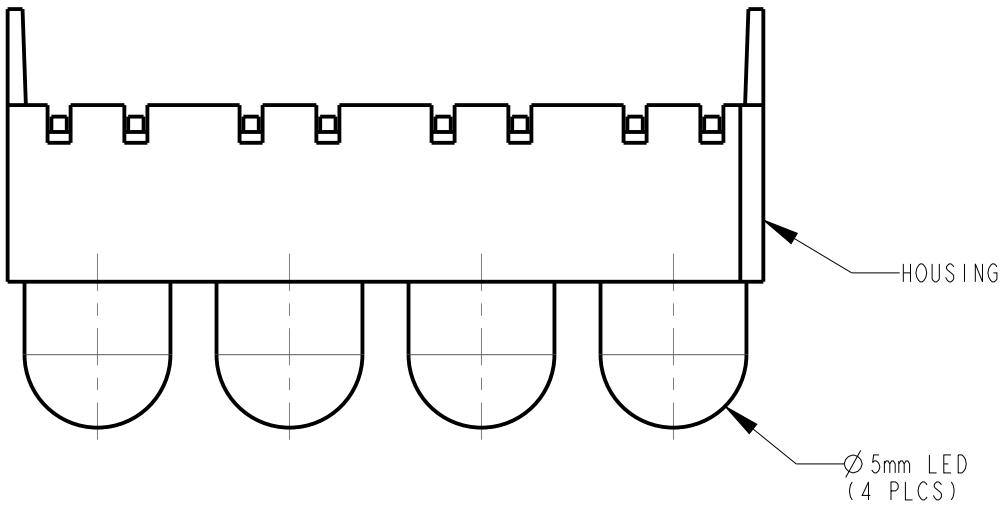


DIALIGHT PART NUMBER	LED COLOR	CODE	DIM "A"	DIM "B"	DIM "C"	REVISIONS			
						REV	ECN NO	DRN	DATE
550-2407-014F	RED DIFF.		.190	.020	.043	A	—	WFB	5-13-13
550-5307-014F	YELLOW DIFF.	+	.190	.020	.043	A	—	WFB	5-13-13



ATTENTION:
OBSERVE PRECAUTIONS FOR
HANDLING ELECTROSTATIC
SENSITIVE DEVICES

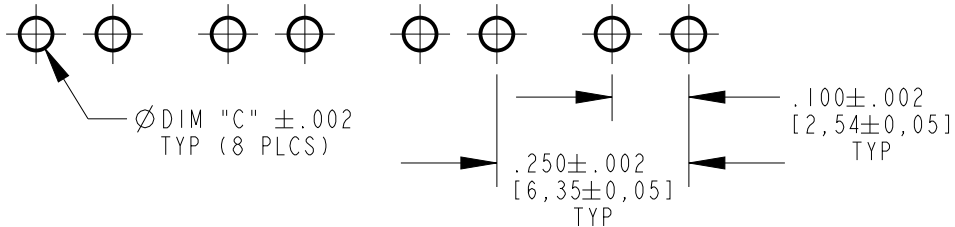
REV	ECN NO	REVISIONS	DRN	CKD	APP	QA	CM	DATE
A	—	NEW RELEASE	WFB	JTD	N.O.	RL	JN	5-13-13



LAMP PREPARATION BEFORE ASSEMBLY (CODE +)
SHEAR FLANGE - BODY DIA. AT BASE = .200 MAX

NOTES:

- LED LEADS TO BE FREE OF DEFORMATION AFTER BENDING AND CUTTING.
- LAMP MUST BE SEATED ALL THE WAY DOWN INTO HOUSING. BENDS MUST BE TIGHT. NO LONGITUDINAL TRAVEL ALONG AXIS ALLOWED.
- LED LEAD DIMENSIONS SHOWN ARE MEASURED AT HOUSING EXIT.
- LEADS TO FIT INTO HOLES SPACED AS PER PATTERN.
- PIN NUMBERS FOR REFERENCE ONLY, DESIGNATION NON-EXISTENT ON PART.
- FOR DIALIGHT CUSTOMER DRAWING REFER TO: C-18047.
- THIS ASSEMBLY CONTAINS ELECTROSTATIC DISCHARGE SENSITIVE DEVICES (ESDS). MAINTAIN ALL PRECAUTIONARY MEASURES DURING ASSEMBLY, HANDLING, AND STORAGE IN ACCORDANCE WITH IPC-A-610.
- THIS PRODUCT IS RoHS COMPLIANT. EACH BAG IS MARKED WITH RoHS COMPLIANT LABEL (SEE BOM FOR LABEL P/N) OR EQUIVALENT MARKINGS. LED MUST BE Pb FREE.



RECOMMENDED HOLE PATTERN GAUGE

THIS DRAWING AND THE CONTENTS HEREIN ARE CONFIDENTIAL AND THE SOLE PROPERTY OF DIALIGHT. REPRODUCTION OF THIS DRAWING OR CONSTRUCTION OF ANY PARTS WITHIN THIS DRAWING ARE FORBIDDEN WITHOUT THE WRITTEN CONSENT OF DIALIGHT.			
SCALE: 4.000 ALL DIM'S IN: INCHES (MM)	DRAWING NUMBER 550-XX07-014F		REV A
TOLERANCES: UNLESS OTHERWISE SPECIFIED FRACTIONS: ±1/64 DECIMALS (.XX): ±.02 DECIMALS (.XXX): ±.015 ANGLES: ±3° FINISH:	TITLE Ø 5mm QUAD CBI REVERSE POLARITY RoHS COMPLIANT MATERIAL		
FSCM 83330	Dialight 1501 ROUTE 34 SOUTH FARMINGDALE, NJ 07727		
SHEET 1 OF 1		FAMILY TABLE:	