

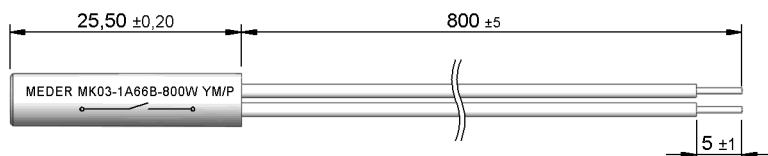
Preliminary Datasheet

Dimensions mm[inch]

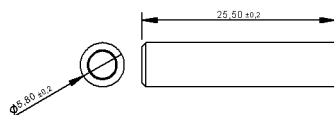
tolerances acc. to DIN ISO 2768-m
 Toleranzen gem. DIN ISO 2768-m

Isometric

Scale 1:2
 Maßstab 1:2



Housing



Cable

 twin cord LiYZ 2x0,14qmm
 Zwillingslitze LiYZ 2x0,14qmm

Terminals/Connector

 Ends tinned
 Enden verzinkt

Schematic



Marking

 according to EN60062/factory code
 gem. EN60062/Fertigungsstätte


| Magnetic properties | Conditions | Min | Typ | Max | Unit |
|---------------------|------------|-------------------|-----|-----|------|
| Pull-In | at 20°C | 21 | | 40 | AT |
| Test equipment | | KMS13+PK002+SA002 | | | |

| Special Product Data | Conditions | Min | Typ | Max | Unit |
|----------------------|--|----------------------------|-----|------|------|
| Contact - No. | | 66 | | | |
| Contact - form | | A - NO | | | |
| Contact rating | Any DC combination of V & A not to exceed their individual max.'s | | | 10 | W |
| Switching voltage | DC or Peak AC | | | 180 | V |
| Carry current | DC or Peak AC | | | 1,25 | A |
| Switching current | DC or Peak AC | | | 0,5 | A |
| Sensor-resistance | measured with 40% overdrive | | | 380 | mOhm |
| Housing material | | PBT glass fibre reinforced | | | |
| Case colour | | white | | | |
| Sealing compound | | Polyurethan | | | |

| Environmental data | Conditions | Min | Typ | Max | Unit |
|-------------------------|-----------------------------|-----|-----|-----|------|
| Shock | 1/2 sine wave duration 11ms | | | 50 | g |
| Vibration | from 10 - 2000 Hz | | | 20 | g |
| Operating temperature | cable not moved | -30 | | 70 | °C |
| Operating temperature | cable moved | -5 | | 70 | °C |
| Storage temperature | | -30 | | 70 | °C |
| Reach / RoHS conformity | | yes | | | |

| General data | Conditions | Min | Typ | Max | Unit |
|-----------------|------------|---|-----|-----|------|
| Mounting advice | | over 5m cable, a resistor is recommended. | | | |