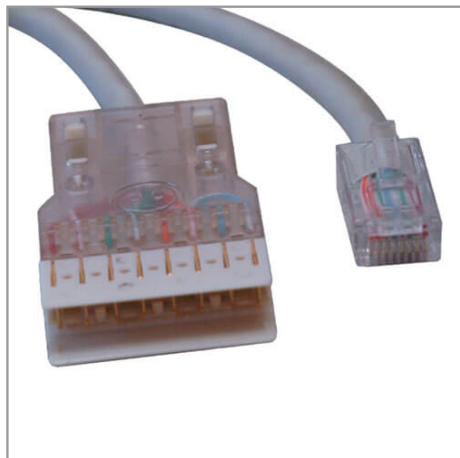




**Tripp Lite**  
1111 W. 35th Street  
Chicago, IL 60609 USA  
Telephone: 773.869.1234  
www.tripplite.com

## Cat5e 350MHz Cable RJ45M/110 Connector - Gray, 25-ft.

MODEL NUMBER: **N017-025-GY**



### Highlights

- RJ45 to 110, 25ft
- Easily connects to 110 Punch Down blocks
- Cat5e 100mb rated

### Package Includes

25ft RJ45 to 110 Cat5e Patch Cable

### Description

Tripp Lite's N017-025-GY, RJ45 to 110 Patch Cable, is made with 4-pair stranded Cat5e cable, and allows patching from equipment to 110 type connecting blocks, or connecting test equipment to a 110 patch bay.

### Features

- RJ45 to 110, 25ft
- 4-pair stranded Cat5e patch cable
- Gray PVC jacket

## Specifications

INPUT	
Cable Length (ft.)	25
Cable Length (m)	7.6
PHYSICAL	
Shipping Dimensions (hwd / in.)	11.00 x 7.00 x 1.00
Shipping Dimensions (hwd / cm)	27.94 x 17.78 x 2.54
Shipping Weight (lbs.)	0.65
Shipping Weight (kg)	0.29
Color	Gray
CONNECTIONS	



**Tripp Lite**  
1111 W. 35th Street  
Chicago, IL 60609 USA  
Telephone: 773.869.1234  
[www.tripplite.com](http://www.tripplite.com)

Side A - Connector 1	RJ45 (MALE)
Side B - Connector 1	110 (MALE)
<b>WARRANTY</b>	
Product Warranty Period (Worldwide)	Lifetime limited warranty

© 2018 Tripp Lite. All rights reserved. All product and company names are trademarks or registered trademarks of their respective holders. Use of them does not imply any affiliation with or endorsement by them. Tripp Lite has a policy of continuous improvement. Specifications are subject to change without notice. Tripp Lite uses primary and third-party agencies to test its products for compliance with standards. See a list of Tripp Lite's testing agencies:  
<https://www.tripplite.com/products/product-certification-agencies>