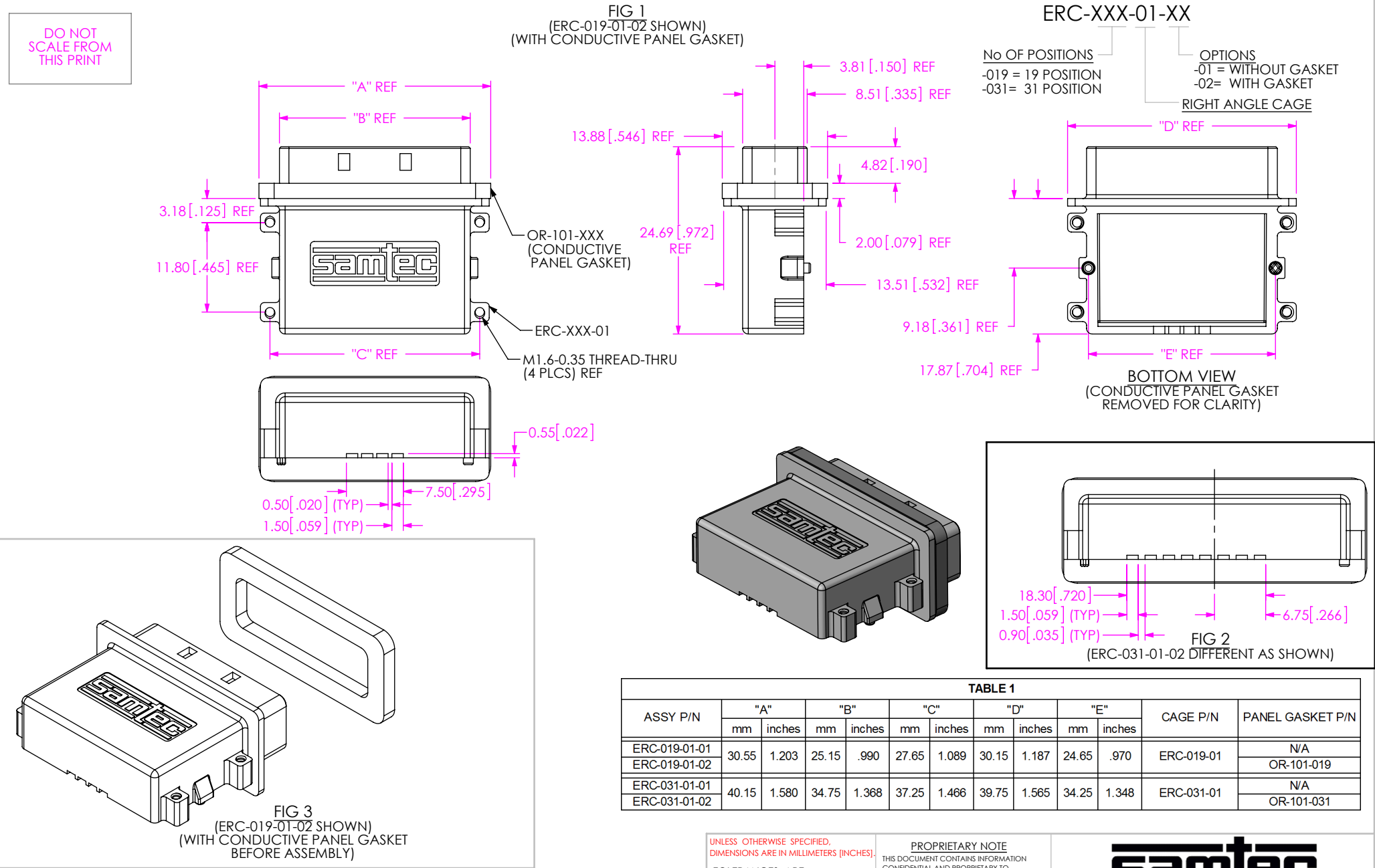


DO NOT  
SCALE FROM  
THIS PRINT



NOTES:

1. REPRESENTS A CRITICAL DIMENSION.
2. PARTS TO BE PACKAGED IN TRAYS, PROVIDED BY SAMTEC.

UNLESS OTHERWISE SPECIFIED,  
DIMENSIONS ARE IN MILLIMETERS [INCHES].

TOLERANCES ARE:  
DECIMALS ANGLES  
X.X: ±0.3 [.01] 2°  
X.XX: ±0.13 [.005]  
X.XXX: ±0.025 [.0010]

PROPRIETARY NOTE

THIS DOCUMENT CONTAINS INFORMATION  
CONFIDENTIAL AND PROPRIETARY TO  
SAMTEC, INC. AND SHALL NOT BE REPRODUCED  
OR TRANSFERRED TO OTHER DOCUMENTS OR  
DISCLOSED TO OTHERS OR USED FOR ANY  
PURPOSE OTHER THAN THAT WHICH IT WAS  
OBTAINED WITHOUT THE EXPRESSED WRITTEN  
CONSENT OF SAMTEC, INC.

**samtec**

520 PARK EAST BLVD, NEW ALBANY, IN 47150  
PHONE: 812-944-6733 FAX: 812-948-5047  
e-Mail: info@SAMTEC.com code: 55322

MATERIAL: DO NOT SCALE DRAWING SHEET SCALE: 2:1

DIECAST CAGE: ZINC ALLOY

PANEL GASKET: ORNI BEARING CONDUCTIVE FOAM

DESCRIPTION:  
ER18 RIGHT ANGLE PCB CAGE ASSY

DWG. NO.

ERC-XXX-01-XX

BY: KNOWLDEN 5/9/2007 SHEET 1 OF 1