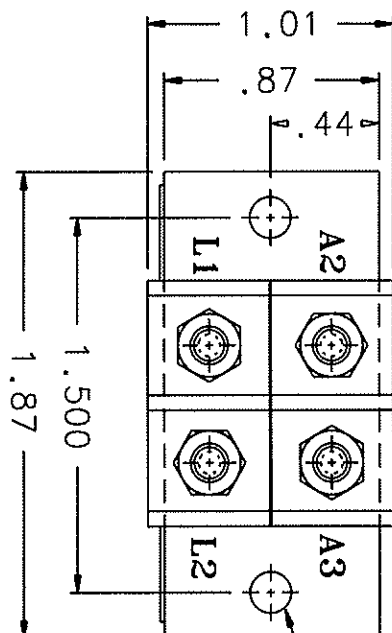
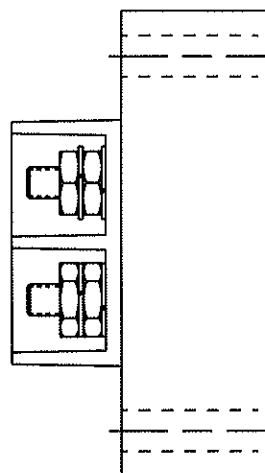
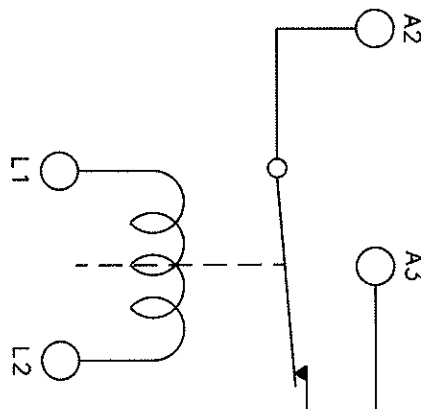


Q-50A

REV. J		RELEASED		REV. J	
REV.	DESCRIPTION	DATE	APPROVED	REV.	DESCRIPTION
H	40460 REDRAWN, *MAX* ADDED TO .59.	99/09/27	RS		
J	41494 *MAX* ADDED TO .76 & 1.03	00/02/01	RS		

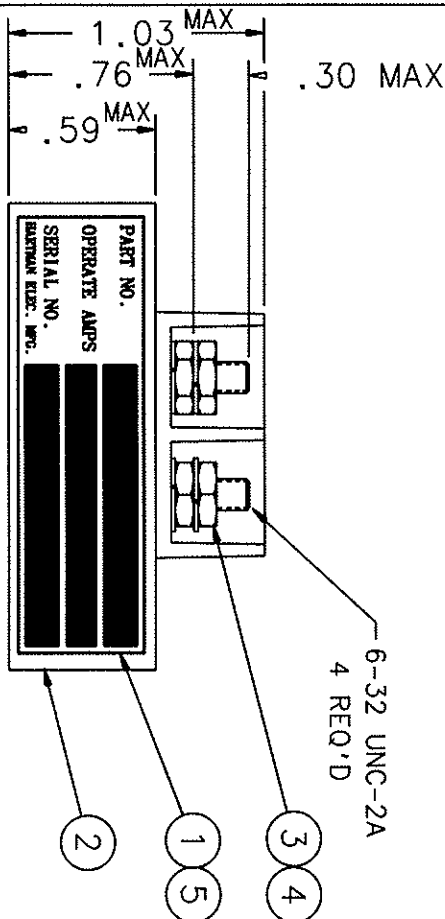


166 DIA. HOLE  
2 MTG HOLES



OPERATING CHARACTERISTICS  
PICKUP 3 1/2 AMPS D.C. MAX.  
DROPOUT 1/2 AMP MIN  
CONTINUOUS 20 AMPS MAX

MAX. WEIGHT 1.25 OZ.  
TEMP -55°C TO +71°C  
VIBRATION 10 G's TO 500HZ  
ALTITUDE 50,000 FT. MAX.  
CONTACT RATING .25 AMP RES. 28 VDC  
LAMP LOAD .08 AMP 28 VDC



6-32 UNC-2A  
4 REQ'D

QTY	PART OR IDENTIFYING NO.	NOMENCLATURE OR DESCRIPTION	CAGE NO.	DRAWING OR SPECIFICATION	MATERIAL OR NOTE
5	1	39529-024 OVERLAY			
4	4	51806-014 WASHER - LOCK NO. 6 SPLIT			
3	4	50406-034 NUT 6-32 X 1/4 X 5/64 HEX.			
2	1	35190-010 RELAY ASSEMBLY - PRIMARY			
1	1	34246-001 PLATE - NAME			
HARTMAN ELECTRICAL MANUFACTURING MASTFIELD, OHIO					
RELAY - CURRENT INDICATOR 20 AMP CONTINUOUS					
093					

2 PL DEC. 13 PL DEC. ANGLES * .06 * .010 * 1°	DR BY RLS 00/02/25	SIZE	CODE IDENT	DWG NO.
MATERIAL	CHK BY RES 00/02/25	C	74063	Q-50A
ENG BY 00/02/25	RELEASE	SCALE	NONE	SHEET
MF G 00/02/25	CONTR NO.			
GOVT APPVL				

# Mouser Electronics

Authorized Distributor

Click to View Pricing, Inventory, Delivery & Lifecycle Information:

[TE Connectivity:](#)

[Q50A](#)