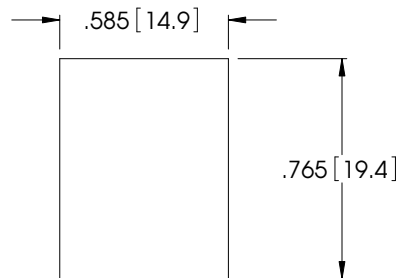
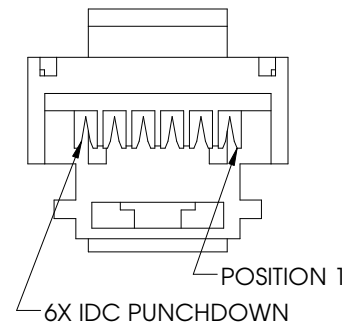
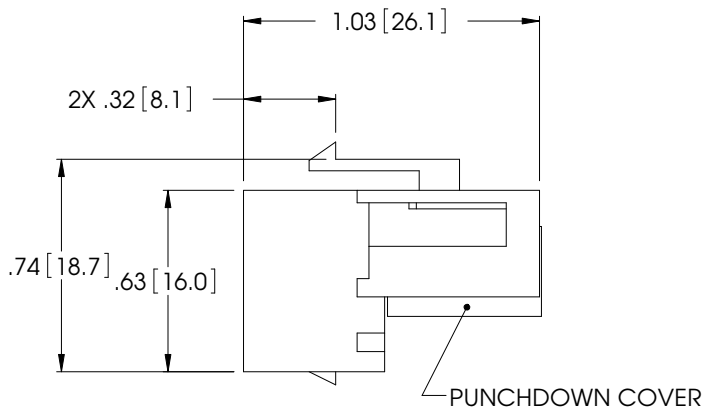
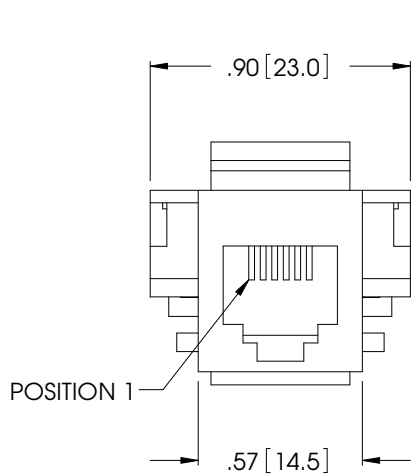


THE INFORMATION CONTAINED IN THIS DRAWING IS THE SOLE PROPERTY OF L-COM, INC. ANY REPRODUCTION IN PART OR WHOLE WITHOUT THE WRITTEN PERMISSION OF L-COM, INC. IS PROHIBITED.

REVISIONS			
REV	DESCRIPTION	DATE	APPROVED
A	INITIAL RELEASE	01/04/08	D. PARHAM



NOTES

MATERIAL:
HOUSING: ABS, COLOR: BLACK
PUNCHDOWN COVER: THERMOPLASTIC, COLOR: CLEAR
JACK CONTACTS: PHOSPHOR BRONZE

FINISH:
JACK CONTACTS: GOLD PLATED

MAXIMUM PANEL THICKNESS: .06"

RECOMMENDED
PANEL OPENING

RoHS Compliant ✓

UNLESS OTHERWISE SPECIFIED, DIMENSIONS ARE IN INCHES (mm)		APPROVALS		DATE
TOLERANCES TO BE: .X ±.1 (.25) ANGLES ±2° .XX ±.01 (.25) .XXX ±.005 (.13) OVERALL CABLE LENGTH TOL: ≤ 60 (1524) +3 (7.62) / - 0 > 60 (1524) +5% / -0%		DRAWN BY D. PARHAM		01/04/2008
		CHECKED BY M. MARTINEZ		01/04/2008
		APPROVED BY D. GALLAGHER		01/04/2008
		CONFIGURATION DETAILS OF UNDIMENSIONED FEATURES MAY VARY		
PROJ		COLOR VARIATIONS MAY OCCUR		

L-com CONNECTIVITY PRODUCTS		45 BEECHWOOD DRIVE NORTH ANDOVER, MA 01845	
CATEGORY		MODULAR	
PRODUCT DESCRIPTION		JACK CAT3 RJ12 BLACK	
SIZE A	FSCM NO. 43321	DWG. NO. MJSTLC312	REV. A
SCALE: NONE		CAD FILE: MJSTLC312.SLDDRW	
		SHEET 1 OF 1	