

UK and UKK Series Fused Terminal Blocks with Disconnect Lever

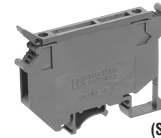
The particular feature of the fuse terminal blocks, UK5-HESI and UK6-HESI is the hinged disconnect lever with limit stop for fine fuses. These terminal blocks are with and without light indicator. The latter signals when the fuse insert has blown. Several disconnect levers can be coupled by means of the connection pin VS (call sales) in order to switch a three phase circuit on and off. **Note:** 250 and 24 Designations in part number relates to supply voltage for LED indicator.

Features

- ▶ Hinged Disconnect Lever
- ▶ Blown Fuse Indicator

Specifications

- ▶ Fuse Size: UK5 — 5 × 20, 5 × 25, 5 × 30 mm
- ▶ Fuse Size: UK6.3 — 6.3 × 32 mm (1/4" × 1 1/4")
- ▶ Fuse Size: UK10 — 10.3 × 38 mm
- ▶ Fuse Size: UKK5 — 5 × 20, 6.3 × 32 mm


 3004100
(Supplementary)

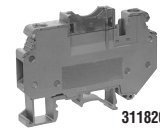
 3048616
(Branch)


| Stock No. | Mfr.'s Type | Phoenix No. | Description | Type of Protection | EACH | |
|-----------|-------------|-----------------------------|--|--------------------|-------|-------|
| | | | | | 1-9 | 10-24 |
| 809-0012 | 3004100 | UK 5-HESI | DIN Rail Mount, 26-10 AWG, 600 V | Supplementary | 7.86 | 7.21 |
| 809-0016 | 3004142 | UK 5 HESILA 250 | DIN Rail Mount, 26-8 AWG, 110-250 V with Light Indicator | Supplementary | 12.13 | 11.13 |
| 809-0014 | 3004126 | UK 5 HESILED 24 | DIN Rail Mount, 26-8 AWG, 15-30 V with Light Indicator | Supplementary | 12.13 | 11.13 |
| 809-0139 | 3004171 | UK 6.3 HESI | DIN Rail Mount, 26-8 AWG | Supplementary | 8.79 | 8.18 |
| 809-0140 | 3004249 | UK 6.3 HESILA 250 | DIN Rail Mount, with Light Indicator, 26-8 AWG | Supplementary | 15.50 | 13.84 |
| 809-0141 | 3004265 | UK 6.3 HESILED 24 | DIN Rail Mount, with Light Indicator, 26-8 AWG | Supplementary | 13.63 | 12.80 |
| 809-0142 | 3007204 | UKK 5 HESI (5 × 20) | DIN Rail Mount, 26-10 AWG | Supplementary | 16.66 | 15.27 |
| 809-0143 | 3007217 | UKK 5 HESI (6.3 × 32) | DIN Rail Mount, 26-10 AWG | Supplementary | 17.44 | 15.99 |
| 809-0145 | 3026654 | UKK 5 HESILED 24 (5 × 20) | DIN Rail Mount, 26-10 AWG, 15-30 V Light Indicator | Supplementary | 23.47 | 21.52 |
| 809-0146 | 0711629 | UKK 5 HESILA 250 (5 × 20) | DIN Rail Mount, 26-10 AWG, 110-250 V Light Indicator | Supplementary | 24.13 | 21.02 |
| 809-0147 | 0711616 | UKK 5 HESILA 250 (6.3 × 32) | DIN Rail Mount, 26-10 AWG, 110-250 V Light Indicator | Supplementary | 20.13 | 23.73 |
| 809-0148 | 0711632 | UKK 5 HESILED 24 (6.3 × 32) | DIN Rail Mount, 26-10 AWG, 15-30 V Light Indicator | Supplementary | 24.89 | 22.83 |
| 809-0765 | 3048386 | UK 10.3 HESI N | Automotive Style Fuse, 24-8 AWG, 110-690 V | Supplementary | 11.44 | 10.72 |
| 809-0804 | 3048399 | UK 10.3 HESILED N 690 | With Disconnect Lever, with Light Indicator, 24-8 AWG | Supplementary | 18.83 | 17.74 |
| 809-0932 | 3048580 | UK 10.3-CC HESI N | DIN Rail Mount 18-4 AWG, 600 | Branch | 12.09 | 11.15 |
| 809-1161 | 3048603 | UK 10.3-CC HESI 3POL | DIN Rail Mount 18-4 AWG, 600 | Branch | 41.15 | 38.83 |
| 809-0933 | 3048616 | UK 10.3-CC HESILED | DIN Rail Mount 18-4 AWG, 600 with Light Indication | Branch | 19.96 | 18.43 |
| 809-1160 | 3048632 | UK 10.3-CC HESILED 3POL | DIN Rail Mount 18-4 AWG, 600 with Light Indication | Branch | 67.18 | 63.40 |

UK Series Flat-Type Fuse Terminal Blocks

Flat-type fuses in accordance with ISO/DIS 8820/ DIN 72 581-3 have established a permanent position in automotive technology. The simple — and perhaps for the same reason reliable — principle of the "plug in fuse" has become a standard in many areas of vehicular technology.

| Stock No. | Mfr.'s Type | Phoenix No. | Description | EACH | | | |
|-----------|-------------|-------------|--|------|-------|-------|-------|
| | | | | 1-9 | 10-24 | 25-49 | 50-99 |
| 809-0138 | 3118203 | UK 6-FS/C | Fuse Terminal Block with Foot Mounting, 26-8 AWG | 8.14 | 7.47 | 6.89 | 6.40 |



3118203

Features

- ▶ Universal Mounting
- ▶ The Terminal Block Can Be Bridged on the Input Side
- ▶ Uses Standard Flat Blade Fuses
- ▶ Fuse Block also Accepts Automotive Style Fuses



DIN Rail Circuit Breakers



0712233



Thermal Miniature Circuit Breakers, TCP

Used with UK Series Flat-Type Fuse Terminal Blocks.

| Stock No. | Mfr.'s Type | Phoenix No. | Amps | EACH | | | |
|-----------|-------------|-------------|-------|-------|-------|-------|-------|
| | | | | 1-9 | 10-24 | 25-49 | 50-99 |
| 909-0007 | 0712123 | TCP 0.25 | 0.25 | 12.64 | 11.70 | 10.78 | 10.35 |
| 909-0011 | 0712152 | TCP 0.5 | 5.00 | 12.64 | 11.70 | 10.86 | 10.56 |
| 909-0013 | 0712194 | TCP 1 | 1.00 | 12.64 | 11.70 | 10.86 | 10.56 |
| 909-0014 | 0712217 | TCP 2 | 2.00 | 12.64 | 11.70 | 10.86 | 10.56 |
| 909-0015 | 0712233 | TCP 3 | 3.00 | 12.64 | 11.70 | 10.86 | 10.56 |
| 909-0016 | 0712259 | TCP 4 | 4.00 | 12.62 | 11.70 | 10.76 | 10.34 |
| 909-0017 | 0712275 | TCP 6 | 6.00 | 12.62 | 11.24 | 10.76 | 10.34 |
| 909-0018 | 0712291 | TCP 8 | 8.00 | 12.62 | 11.70 | 10.76 | 10.34 |
| 909-0019 | 0712314 | TCP 10 | 10.00 | 12.64 | 11.70 | 10.86 | 10.56 |

Base Terminal Blocks

Base terminal blocks for fuse, components and disconnect plugs are used in almost all electrical systems for the most varied switching tasks. As feed-through and base terminal blocks are often combined on one mounting rail, these base blocks are available in the design of the different terminal block ranges.



Three-Level Sensor Terminal Block Style

| Stock No. | Mfr.'s Type | Phoenix No. | Description | EACH | | | |
|-----------|-------------|-------------|-----------------|------|-------|-------|-------|
| | | | | 1-9 | 10-24 | 25-49 | 50-99 |
| 809-0449 | 2774237 | DIKD 1.5-TG | 30-14 AWG, Gray | 8.74 | 8.02 | 7.42 | 6.88 |

Three-Level Actuator Terminal Block Style

| | | | | | | | |
|----------|---------|-------------|-----------------|------|------|------|------|
| 809-0450 | 2717113 | DOK 1.5-TG | 30-14 AWG, Gray | 7.03 | 7.91 | 7.29 | 6.76 |
| 809-0451 | 3011054 | DOKD 1.5-TG | 30-14 AWG, Gray | 9.35 | 8.57 | 7.90 | 7.34 |

Four-Level Sensor and Actuator Terminal Block Style

| | | | | | | | |
|----------|---------|--------------------|-----------------|-------|-------|-------|-------|
| 809-0452 | 3011067 | VIOK 1.5-D/TG/D/PE | 24-12 AWG, Gray | 15.62 | 14.32 | 13.23 | 12.27 |
|----------|---------|--------------------|-----------------|-------|-------|-------|-------|

UK and UDK Series Terminal Block Style

| | | | | | | | |
|----------|---------|----------|-----------|-------|-------|-------|------|
| 809-0112 | 2777014 | UDK 4-TG | 28-12 AWG | 4.25 | 3.98 | 3.80 | 3.61 |
| 809-0113 | 2812018 | UK 4-TG | 28-12 AWG | 5.04 | 4.46 | 4.21 | 3.87 |
| 809-0114 | 3007042 | UKK 5-TG | 28-12 AWG | 12.35 | 11.32 | 10.45 | 9.71 |

QT Series Terminal Block Style

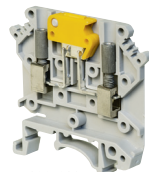
| | | | | | | | |
|----------|---------|-----------|-----------|------|------|------|------|
| 809-0120 | 3204036 | QT 1.5-TG | 22-16 AWG | 2.28 | 2.09 | 1.93 | 1.80 |
| 809-0121 | 3204175 | QT 2.5-TG | 18-14 AWG | 1.84 | 2.14 | 1.98 | 1.84 |

Knife Disconnect Terminal Blocks (MTK)

In measurement, regulation and control systems, disconnect terminal blocks are becoming more and more popular in order to rapidly localize faults and to permit inspection work to be carried out under zero voltage conditions.

Features

- ▶ Narrow Space Saving Construction
- ▶ High Current Carrying Capacity of Up to 15 A Due to Low Contact Resistance



3004032



Knife Disconnect Terminal Blocks

| Stock No. | Mfr.'s Type | Phoenix No. | Description | EACH | | | |
|-----------|-------------|--------------|-------------|------|-------|-------|-------|
| | | | | 1-9 | 10-24 | 25-49 | 50-99 |
| 809-0453 | 3004032 | UK 5-MTK-P/P | 22-12 AWG | 8.28 | 7.58 | 7.00 | 6.50 |
| 809-0455 | 3104013 | MTK-P/P | 28-12 AWG | 7.27 | 6.66 | 6.16 | 5.72 |

Double and Double Level Knife Disconnect Terminal Blocks

| | | | | | | | |
|----------|---------|---------------|-----------|-------|-------|-------|-------|
| 809-0456 | 2775210 | UDK 4-MTK-P/P | 30-10 AWG | 8.53 | 7.82 | 7.21 | 6.70 |
| 809-0457 | 2800004 | UKK 5-MTK-P/P | 26-12 AWG | 12.92 | 11.85 | 10.93 | 10.15 |

Knife Disconnect Terminal Blocks Accessories

| | | | | | | | |
|----------|---------|---|-----------|------|------|-----|-----|
| 809-0454 | 3101029 | — | End Cover | 1.15 | 1.00 | .95 | .89 |
|----------|---------|---|-----------|------|------|-----|-----|

Fuse, Component and Isolating Connectors

The ST-SI-UK 4 fuse connectors for 5 × 20 mm cartridge fuse inserts are available with or without light indicators. The version with a light indicator includes light diodes connected back-to-back as well as preresistors for the three voltage levels up to 60 V and a glow lamp with preresistors for voltage levels above 110 V. The connector housing is folded back to the side to change the fuse. The component connector, ST-BE is available as a single connector for 2-position components. The component itself is inserted from above and reliably clamped.



2802316



Component Connector

| Stock No. | Mfr.'s Type | Phoenix No. | Volts | EACH | | | |
|-----------|-------------|-------------|-------|------|-------|-------|-------|
| | | | | 1-9 | 10-24 | 25-49 | 50-99 |
| 809-0115 | 2802316 | ST-BE | — | 4.16 | 3.95 | 3.80 | 3.68 |

Fuse Connectors

| | | | | | | | |
|----------|----------|------------------|---------|-------|-------|-------|-------|
| 809-0119 | 0921011 | ST-SI-UK 4 | — | 3.55 | 3.26 | 3.01 | 2.79 |
| 809-0116 | 0921053* | ST-SILA250-UK 4 | 110-250 | 9.76 | 8.94 | 8.25 | 7.68 |
| 809-0117 | 0921024* | ST-SILED 12-UK 4 | 5-15 | 13.31 | 12.20 | 11.26 | 10.47 |
| 809-1300 | 0921037* | ST-SILED 24-UK 4 | 15-30 | 13.32 | 13.30 | 12.19 | 11.27 |

*With indicator light.