

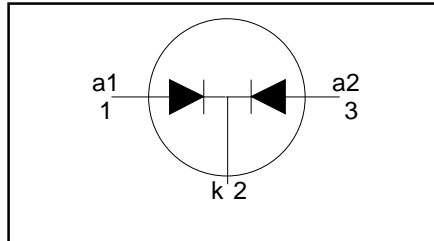
## Rectifier diodes Schottky barrier

## PBYR4045WT series

### FEATURES

- Low forward volt drop
- Fast switching
- Reverse surge capability
- High thermal cycling performance
- Low thermal resistance

### SYMBOL



### QUICK REFERENCE DATA

$$V_R = 40 \text{ V} / 45 \text{ V}$$

$$I_{F(AV)} = 40 \text{ A}$$

$$V_F \leq 0.58 \text{ V}$$

### GENERAL DESCRIPTION

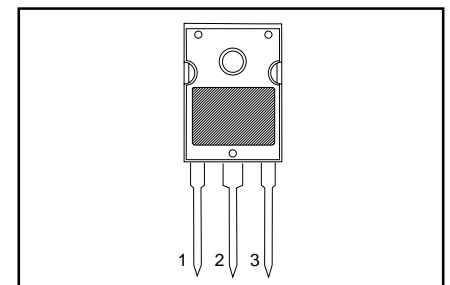
Dual, common cathode schottky rectifier diodes in a plastic envelope. Intended for use as output rectifiers in low voltage, high frequency switched mode power supplies.

The PBYR4045WT series is supplied in the conventional leaded SOT429 (TO247) package.

### PINNING

PIN	DESCRIPTION
1	anode 1 (a)
2	cathode (k)
3	anode 2 (a)
tab	cathode

### SOT429 (TO247)



### LIMITING VALUES

Limiting values in accordance with the Absolute Maximum System (IEC 134)

SYMBOL	PARAMETER	CONDITIONS	MIN.	MAX.		UNIT
		<b>PBYR40</b>		<b>40WT</b>	<b>45WT</b>	
$V_{RRM}$	Peak repetitive reverse voltage		-	40	45	V
$V_{RWM}$	Working peak reverse voltage		-	40	45	V
$V_R$	Continuous reverse voltage	$T_{mb} \leq 107^\circ\text{C}$	-	40	45	V
$I_{O(AV)}$	Average output current (both diodes conducting)	square wave; $\delta = 0.5$ ; $T_{mb} \leq 120^\circ\text{C}$	-	40		A
$I_{FRM}$	Repetitive peak forward current	square wave; $\delta = 0.5$ ; $T_{mb} \leq 120^\circ\text{C}$	-	40		A
$I_{FSM}$	Non-repetitive peak forward current	$t = 10 \text{ ms}$	-	300		A
		$t = 8.3 \text{ ms}$	-	325		A
		sinusoidal; $T_j = 125^\circ\text{C}$ prior to surge; with reapplied $V_{RRM(max)}$ pulse width and repetition rate limited by $T_{jmax}$	-	2		A
$I_{RRM}$	Peak repetitive reverse surge current		-	2		A
$T_j$	Operating junction temperature		-	150		$^\circ\text{C}$
$T_{stg}$	Storage temperature		- 65	150		$^\circ\text{C}$

### THERMAL RESISTANCES

SYMBOL	PARAMETER	CONDITIONS	MIN.	TYP.	MAX.	UNIT
$R_{th\ j-mb}$	Thermal resistance junction to mounting base	per diode	-	-	1.4	K/W
		both diodes	-	-	1	K/W
$R_{th\ j-a}$	Thermal resistance junction to ambient	in free air	-	45	-	K/W

# Rectifier diodes Schottky barrier

## PBYR4045WT series

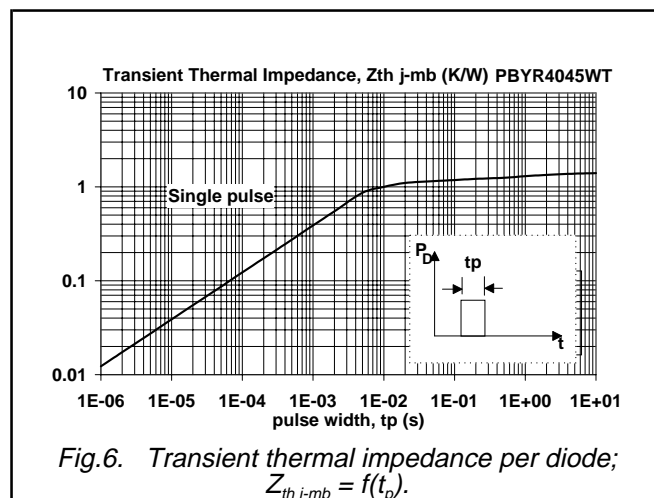
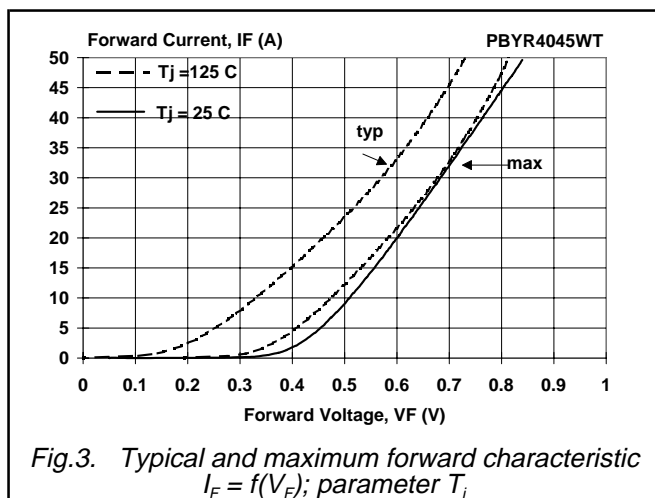
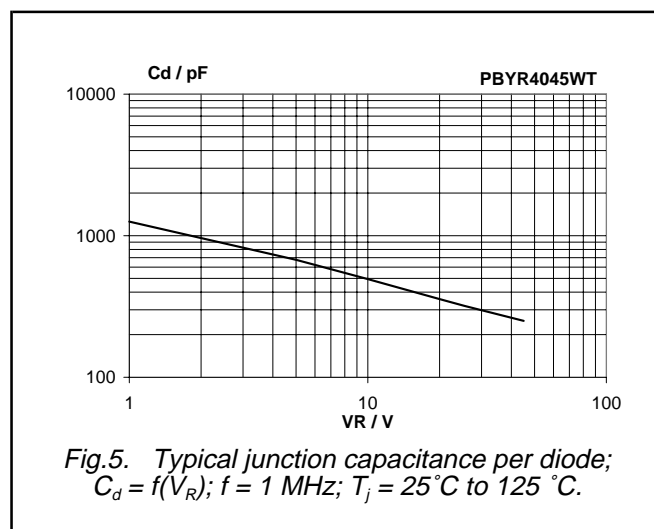
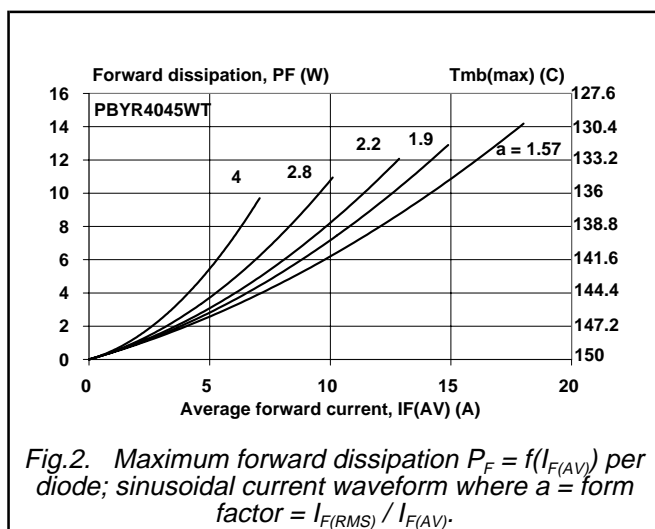
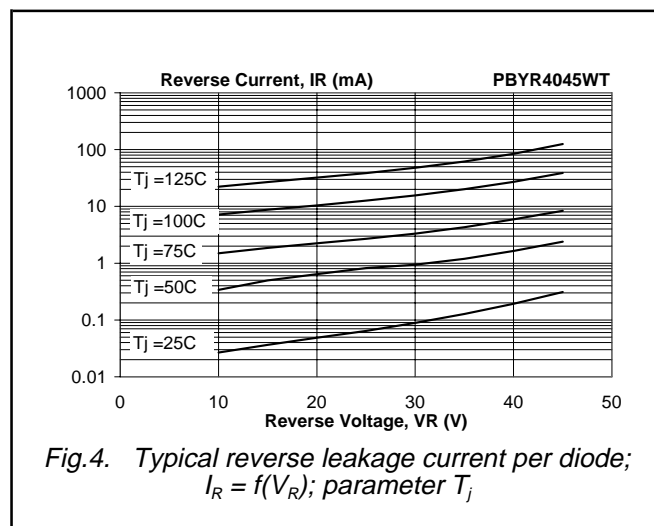
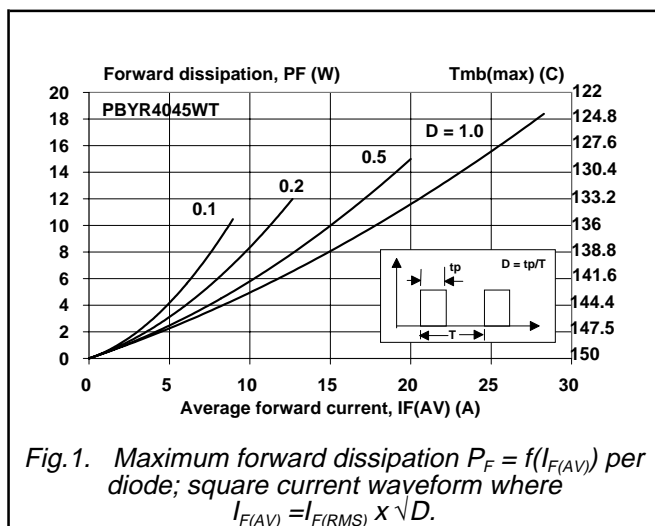
### ELECTRICAL CHARACTERISTICS

$T_j = 25^\circ\text{C}$  unless otherwise specified

SYMBOL	PARAMETER	CONDITIONS	MIN.	TYP.	MAX.	UNIT
$V_F$	Forward voltage per diode	$I_F = 20\text{ A}; T_j = 125^\circ\text{C}$	-	0.5	0.58	V
		$I_F = 40\text{ A}; T_j = 125^\circ\text{C}$	-	0.68	0.75	V
		$I_F = 20\text{ A}$	-	0.51	0.6	V
		$I_F = 40\text{ A}$	-	0.67	0.76	V
$I_R$	Reverse current per diode	$V_R = V_{RWM}; T_j = 100^\circ\text{C}$	-	0.4	2.5	mA
$C_d$	Junction capacitance	$V_R = V_{RWM}; T_j = 100^\circ\text{C}$	-	25	70	mA
		$V_R = 5\text{ V}; f = 1\text{ MHz}; T_j = 25^\circ\text{C to } 125^\circ\text{C}$	-	700	-	pF

# Rectifier diodes Schottky barrier

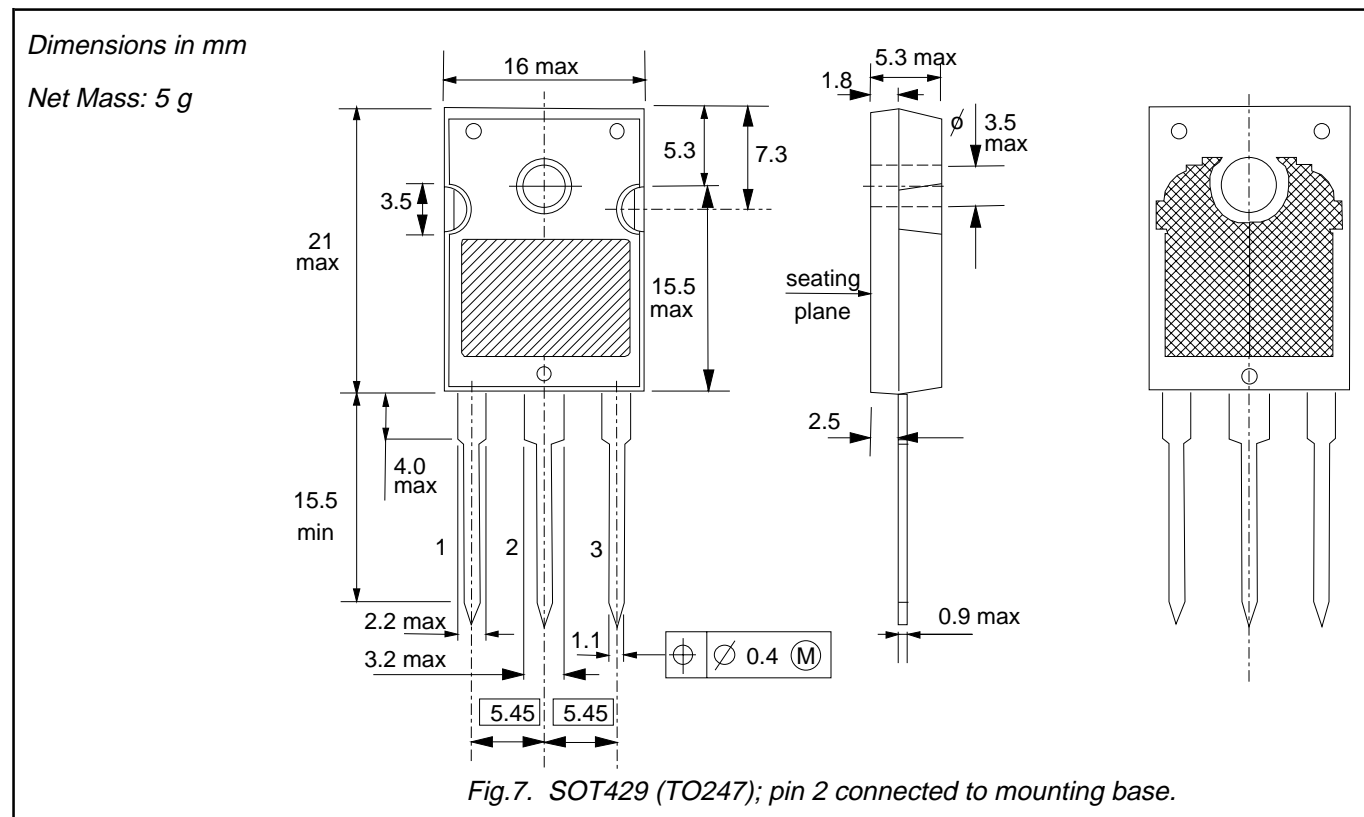
## PBYR4045WT series



# Rectifier diodes Schottky barrier

## PBYR4045WT series

### MECHANICAL DATA



#### Notes

1. Refer to mounting instructions for SOT429 envelope.
2. Epoxy meets UL94 V0 at 1/8".

---

**Rectifier diodes  
Schottky barrier**

---

**PBYR4045WT series**

---

**DEFINITIONS**

<b>Data sheet status</b>	
Objective specification	This data sheet contains target or goal specifications for product development.
Preliminary specification	This data sheet contains preliminary data; supplementary data may be published later.
Product specification	This data sheet contains final product specifications.
<b>Limiting values</b>	
Limiting values are given in accordance with the Absolute Maximum Rating System (IEC 134). Stress above one or more of the limiting values may cause permanent damage to the device. These are stress ratings only and operation of the device at these or at any other conditions above those given in the Characteristics sections of this specification is not implied. Exposure to limiting values for extended periods may affect device reliability.	
<b>Application information</b>	
Where application information is given, it is advisory and does not form part of the specification.	
<b>© Philips Electronics N.V. 1999</b>	
All rights are reserved. Reproduction in whole or in part is prohibited without the prior written consent of the copyright owner.	
The information presented in this document does not form part of any quotation or contract, it is believed to be accurate and reliable and may be changed without notice. No liability will be accepted by the publisher for any consequence of its use. Publication thereof does not convey nor imply any license under patent or other industrial or intellectual property rights.	

**LIFE SUPPORT APPLICATIONS**

These products are not designed for use in life support appliances, devices or systems where malfunction of these products can be reasonably expected to result in personal injury. Philips customers using or selling these products for use in such applications do so at their own risk and agree to fully indemnify Philips for any damages resulting from such improper use or sale.