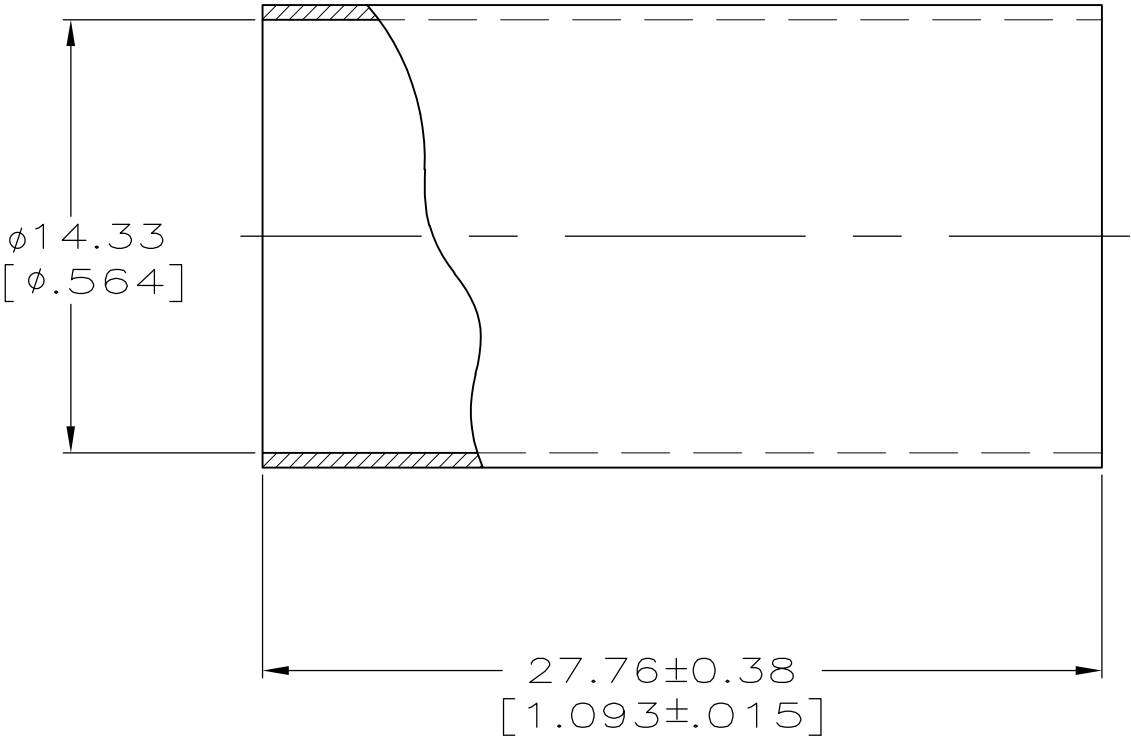

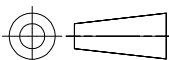




LOC	DIST	REVISIONS				
AJ	16	P	LTR	DESCRIPTION	DATE	APVD
			G	REVISED PER ECO-10-008441	27MAY10	HMR KW



- $\triangle 1$ COPPER ALLOY
- $\triangle 2$ SILVER PLATE PER QQ-S-365
- $\triangle 3$ TIN-LEAD PLATE PER ASTM-B-545, WITH SUPPLEMENTAL ANTI-FRETTING LUBRICANT.
- $\triangle 4$ TIN PLATE PER ASTM-B-545, WITH SUPPLEMENTAL ANTI-FRETTING LUBRICANT.

$\triangle 4$	9-225982-0
$\triangle 3$	225982-4
$\triangle 2$	225982-2
FINISH	PART NUMBER

THIS DRAWING IS A CONTROLLED DOCUMENT.		DWN J.L. GROFT 27 MAR 95		 Tyco Electronics Corporation Harrisburg, Pa 17105-3608			
DIMENSIONS: mm [INCHES]		CHK W. GRAY 28 MAR 95					
	TOLERANCES UNLESS OTHERWISE SPECIFIED: 0 PLC ± - 1 PLC ± - 2 PLC ± 0.13 [.005] 3 PLC ± - 4 PLC ± - ANGLES ± -	APVD W. GRAY 28 MAR 95		NAME FERRULE			
		PRODUCT SPEC —					
		APPLICATION SPEC —					
MATERIAL 	FINISH 	WEIGHT —		SIZE A3	CAGE CODE 00779	DRAWING NO C-225982	RESTRICTED TO —
		CUSTOMER DRAWING				SCALE 4:1	SHEET 1 OF 1