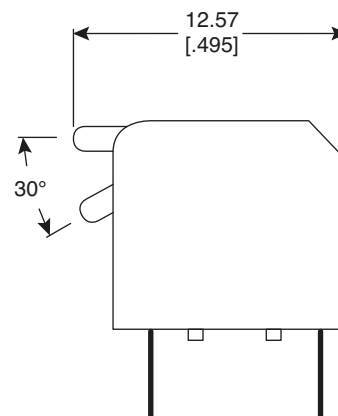
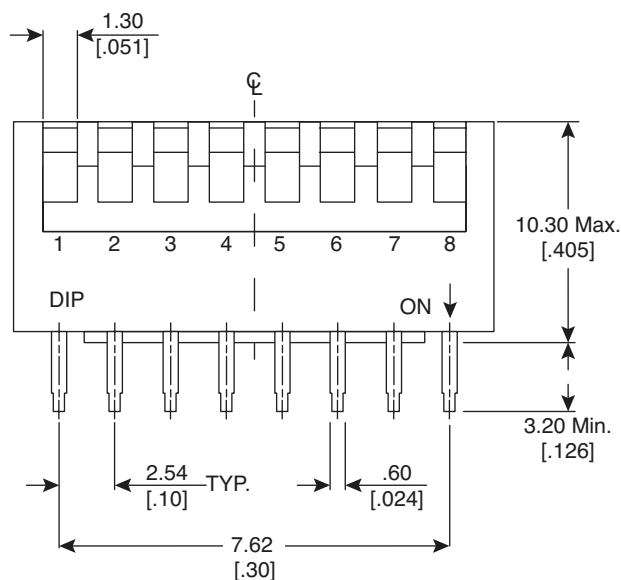
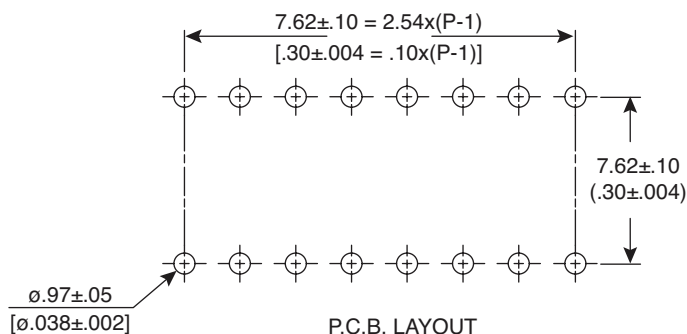
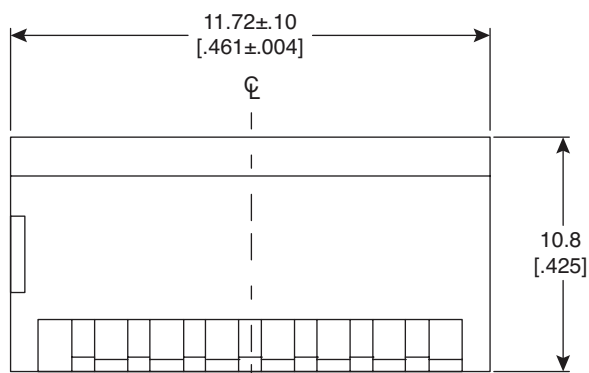


## Dimensions: mm (in.)

**Electrical Specifications:**

- Rating: Switching: 25mA/24VDC  
Non-Switching: 100mA/50VDC
- Contact Resistance: 50mΩ Max. (Initial)
- Insulation Resistance: 100MΩ Min.
- Dielectric Strength: 500V AC (50Hz or 60Hz) for 1 min.

**Soldering Process:**

- Manual Soldering:  
Soldering Temp and Continuous Time: Max. 350°C and Max. 5 seconds

**Mechanical Specifications:**

- Operating Temperature Range: -20° C to +70° C
- Storage Temperature Range: -40° C to +85° C

**Note:**

- RoHS Compliant

**Side Actuated DIP Switch**  
106-LP04-EV

**Mountain  
Switch**

# Mouser Electronics

Authorized Distributor

Click to View Pricing, Inventory, Delivery & Lifecycle Information:

Mountain Switch:

106-LP04-EV