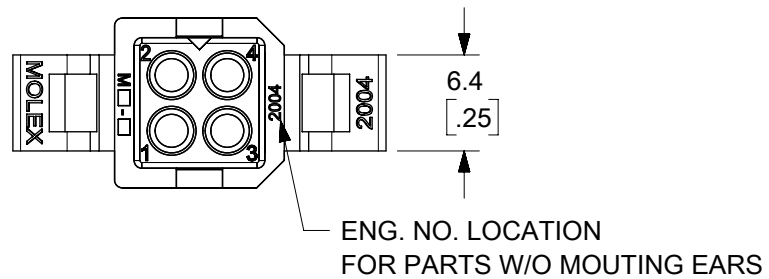


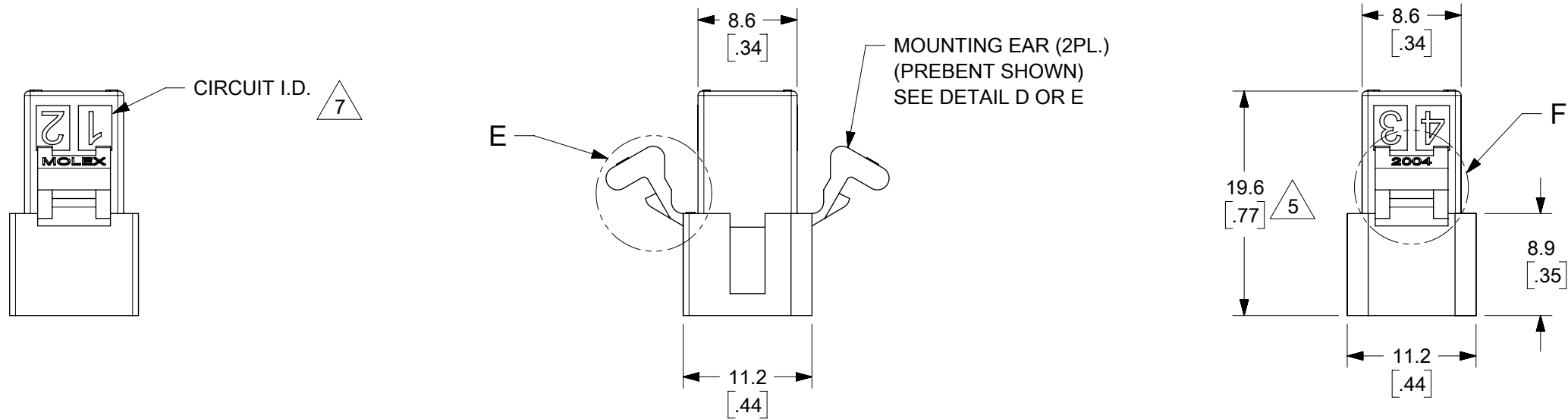
E

E



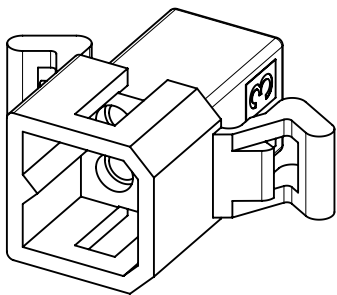
D

D



C

C



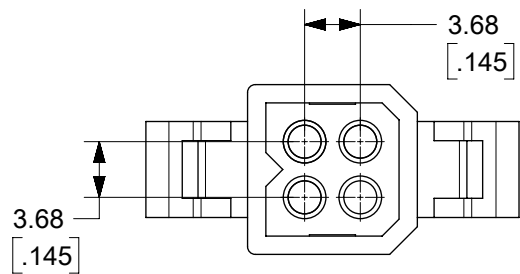
B

B

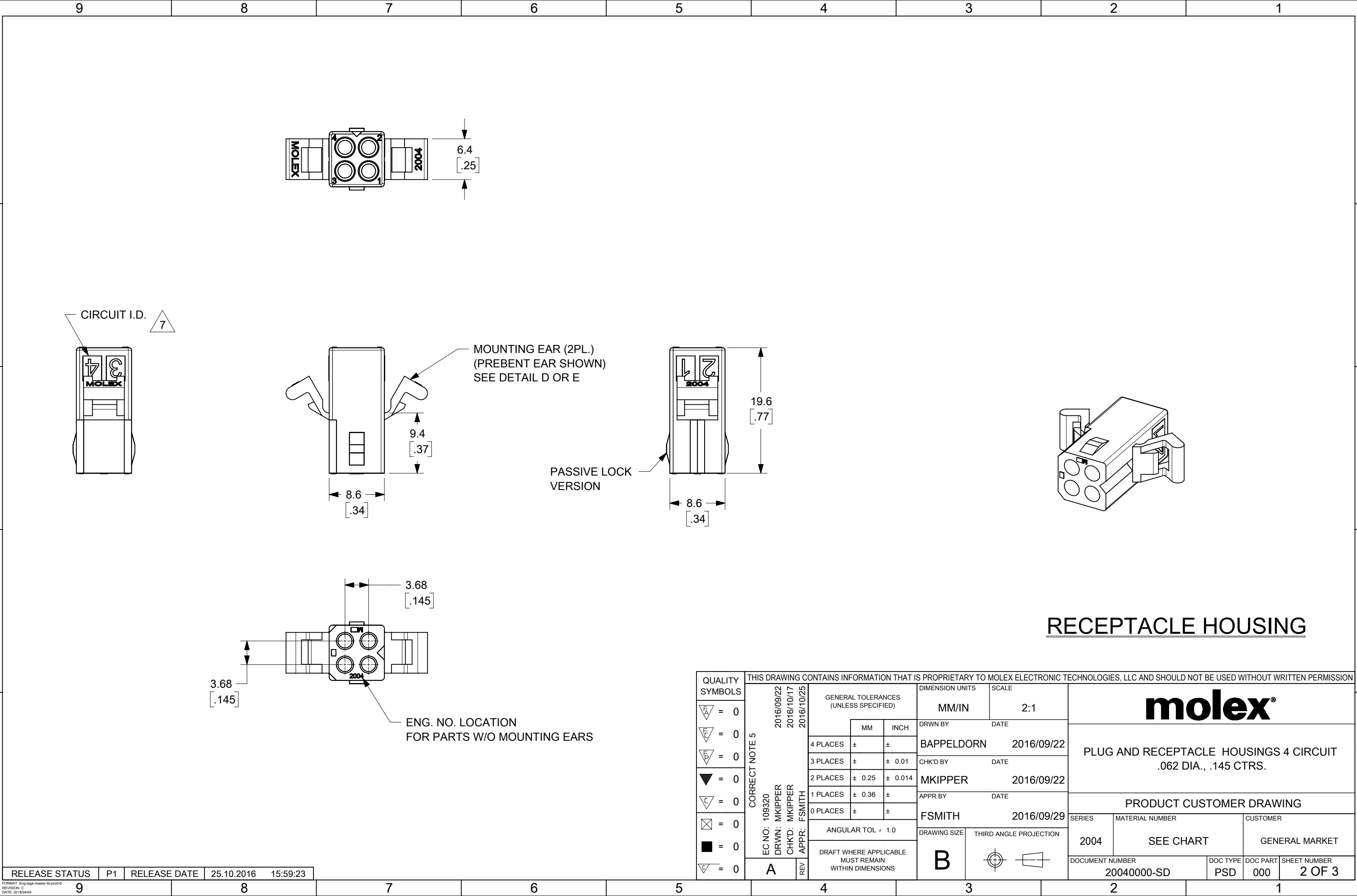
PLUG HOUSING

A

A



THIS DRAWING CONTAINS INFORMATION THAT IS PROPRIETARY TO MOLEX ELECTRONIC TECHNOLOGIES, LLC AND SHOULD NOT BE USED WITHOUT WRITTEN PERMISSION														
QUALITY SYMBOLS		CORRECT NOTE 5 EC NO: 109320 DRWN: MKIPPER CHK'D: MKIPPER APPR: FSMITH	2016/09/22 2016/10/17 2016/10/25	GENERAL TOLERANCES (UNLESS SPECIFIED)			DIMENSION UNITS		SCALE		<div>molex®</div>			
				MM	INCH	MM/IN	2:1							
<div><div>F_A</div></div> = 0						DRWN BY	DATE	<div>PLUG AND RECEPTACLE HOUSINGS 4 CIRCUIT .062 DIA., .145 CTRS.</div>						
<div><div>F_C</div></div> = 0						BAPPELDORN	2016/09/22							
<div><div>F_D</div></div> = 0						CHK'D BY	DATE							
<div><div>F_E</div></div> = 0						MKIPPER	2016/09/22							
<div><div>F_G</div></div> = 0						APPR BY	DATE	<div>PRODUCT CUSTOMER DRAWING</div>						
<div><div>F_H</div></div> = 0						FSMITH	2016/09/29							
<div><div>F_I</div></div> = 0						DRAWING SIZE	THIRD ANGLE PROJECTION	SERIES	MATERIAL NUMBER		CUSTOMER			
<div><div>F_J</div></div> = 0						B	<div><div><div></div></div><div><div></div></div></div>	2004	SEE CHART		GENERAL MARKET			
<div><div>F_K</div></div> = 0				DOCUMENT NUMBER				DOC TYPE	DOC PART	SHEET NUMBER				
<div><div>F_L</div></div> = 0	A	REV		20040000-SD				PSD	000	1 OF 3				



RECEPTACLE HOUSING

THIS DRAWING CONTAINS INFORMATION THAT IS PROPRIETARY TO MOLEX ELECTRONIC TECHNOLOGIES, LLC AND SHOULD NOT BE USED WITHOUT WRITTEN PERMISSION																
QUALITY SYMBOLS		CORRECT NOTE 5 2016/09/22 2016/10/17 2016/10/25 EC NO: 109320 DRWN: MKIPPER CHK'D: MKIPPER APPR: FSMITH A REV				GENERAL TOLERANCES (UNLESS SPECIFIED)		DIMENSION UNITS		SCALE		<div>molex®</div> PLUG AND RECEPTACLE HOUSINGS 4 CIRCUIT .062 DIA., .145 CTRS.				
						MM	INCH	MM/IN		2:1						
<div><div><div></div></div><div>= 0</div></div>						4 PLACES	±	±	BAPPELDORN		2016/09/22					
<div><div><div></div></div><div>= 0</div></div>						3 PLACES	±	± 0.01	CHK'D BY		DATE					
<div><div><div></div></div><div>= 0</div></div>						2 PLACES	± 0.25	± 0.014	MKIPPER		2016/09/22					
<div><div><div></div></div><div>= 0</div></div>						1 PLACES	± 0.36	±	APPR BY		DATE					
<div><div><div></div></div><div>= 0</div></div>						0 PLACES	±	±	FSMITH		2016/09/29					
<div><div><div></div></div><div>= 0</div></div>						ANGULAR TOL ± 1.0			DRAWING SIZE		THIRD ANGLE PROJECTION					
<div><div><div></div></div><div>= 0</div></div>						DRAFT WHERE APPLICABLE MUST REMAIN WITHIN DIMENSIONS			B		<div><div><div></div></div><div></div></div> <div><div><div></div></div><div></div></div>					
<div><div><div></div></div><div>= 0</div></div>																
<div><div><div></div></div><div>= 0</div></div>																
<div><div><div></div></div><div>= 0</div></div>																
<div><div><div></div></div><div>= 0</div></div>		SERIES					MATERIAL NUMBER					CUSTOMER				
<div><div><div></div></div><div>= 0</div></div>		2004					SEE CHART					GENERAL MARKET				
<div><div><div></div></div><div>= 0</div></div>		DOCUMENT NUMBER					DOC TYPE		DOC PART		SHEET NUMBER					
<div><div><div></div></div><div>= 0</div></div>		20040000-SD					PSD		000		2 OF 3					

PLUG	
PART NO.	ENG. NO.
03-06-2043	2004-P
03-06-7043	2004-PBK
03-06-2044	2004-P1
03-06-7044	2004-P1BK
46999-0719	2004-P2

RECEPTACLE	
PART NO.	ENG. NO.
03-06-1043	2004-R
03-06-6043	2004-RBK
03-06-1044	2004-R1
46999-0807	2004-R2

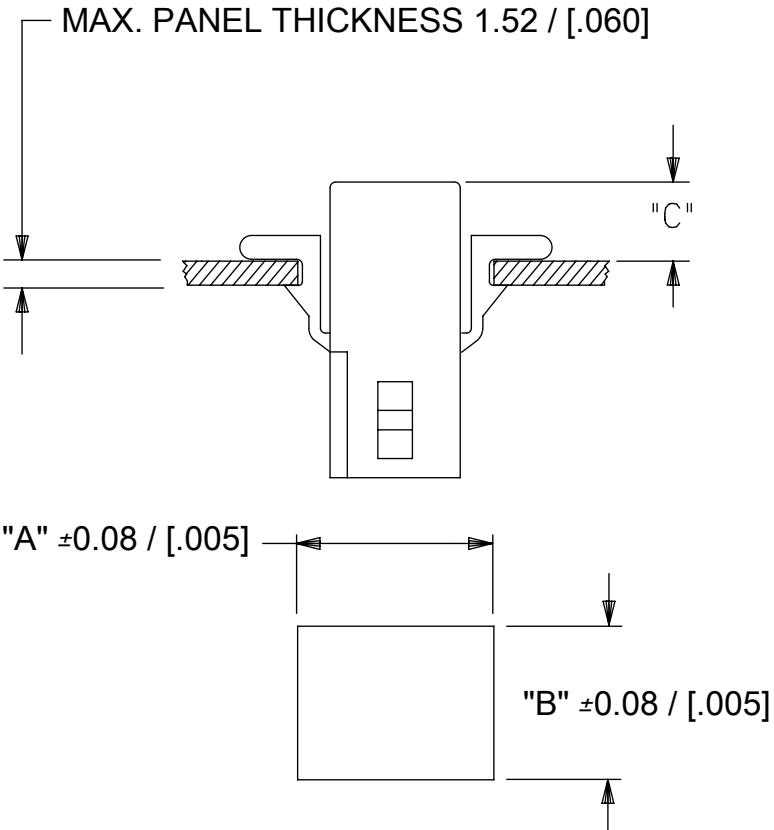
LEGEND:

P = PLUG
R = RECEPTACLE

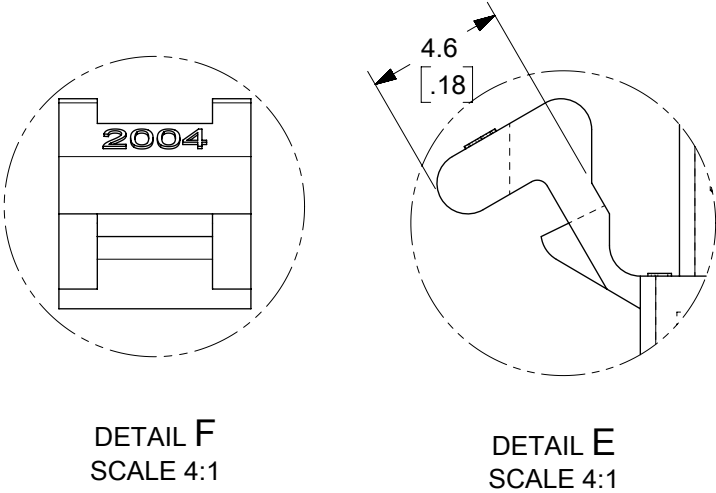
BLANK = WITH STANDARD EARS
1 = WITHOUT EARS
2 = WITH PREBENT EARS

COLOR: _____
BLANK = NATURAL
AM=AMBER BK=BLACK BU=BLUE
BN=BROWN GY=GRAY GN=GREEN
OR=ORANGE RD=RED YW=YELLOW

DETAIL D
STANDARD MOUNTING EARS
(SCALE 4:1)



- NOTES:
1. MATERIAL: NYLON 6/6 UL94V-2, COLOR: SEE LEGEND
 2. FINISH: NONE
 3. PRODUCT SPECIFICATION: PS-02-06
 4. PACKAGING SPECIFICATION: 20040000-PK
 5. THIS DIMENSION DEPENDS ON TOOLING AND MAY BE 0.75/(19.1) ON SOME PARTS.
 6. HOUSINGS FOR USE WITH MOLEX .062/(1.57) DIA. TERMINALS.
 7. CIRCUIT I.D. NUMBERS ON SIDE OF HOUSING DEPENDS ON TOOLING AND MAY OR MAY NOT BE PRESENT.
 8. PARTS CONFORM TO CLASS B REQUIREMENTS OF COSMETIC SPECIFICATION PS-45499-002.
 9. DRAWING REPLACES SD-2004-*



PRE-BENT MOUNTING EARS
(SCALE 4:1)

RECOMMENDED HOLE PATTERN

HOUSING	DIM. "A"		DIM. "B"		PREBENT EAR DIM. "C"		STD. EAR DIM. "C"	
	MM	IN	MM	IN	MM	IN	MM	IN
PLUG	15.62	.615	11.81	.465	6.6	.26	6.6	.26
RECEPTACLE	12.85	.506	10.16	.400	6.1	.24	6.1	.24

QUALITY SYMBOLS		THIS DRAWING CONTAINS INFORMATION THAT IS PROPRIETARY TO MOLEX ELECTRONIC TECHNOLOGIES, LLC AND SHOULD NOT BE USED WITHOUT WRITTEN PERMISSION														
<div><div>F</div><div>= 0</div></div>		CORRECT NOTE 5	2016/09/22 2016/10/17 2016/10/25	GENERAL TOLERANCES (UNLESS SPECIFIED)			DIMENSION UNITS		SCALE		<div>molex®</div>					
<div><div>F</div><div>= 0</div></div>					MM	INCH	MM/IN		1:1							
<div><div>F</div><div>= 0</div></div>				4 PLACES	±	±	DRWN BY		DATE		PLUG AND RECEPTACLE HOUSINGS 4 CIRCUIT .062 DIA., .145 CTRS.					
<div><div>F</div><div>= 0</div></div>				3 PLACES	±	± 0.01	BAPPELDORN		2016/09/22							
<div><div>F</div><div>= 0</div></div>				2 PLACES	± 0.25	± 0.014	CHK'D BY		DATE							
<div><div>F</div><div>= 0</div></div>				1 PLACES	± 0.36	±	MKIPPER		2016/09/22							
<div><div>F</div><div>= 0</div></div>				0 PLACES	±	±	APPR BY		DATE		PRODUCT CUSTOMER DRAWING					
<div><div>F</div><div>= 0</div></div>				ANGULAR TOL ± 1.0			FSMITH		2016/09/29							
<div><div>F</div><div>= 0</div></div>				DRAFT WHERE APPLICABLE MUST REMAIN WITHIN DIMENSIONS			DRAWING SIZE		THIRD ANGLE PROJECTION		SERIES		MATERIAL NUMBER		CUSTOMER	
<div><div>F</div><div>= 0</div></div>							B		<div><div>F</div><div>= 0</div></div>		2004		SEE CHART		GENERAL MARKET	
<div><div>F</div><div>= 0</div></div>		A		REV				DOCUMENT NUMBER		DOC TYPE		DOC PART		SHEET NUMBER		
<div><div>F</div><div>= 0</div></div>								20040000-SD		PSD		000		3 OF 3		