

MN6761S

External Synchronization Control LSI for Color Video Cameras

■ Overview

The MN6761S is an external synchronization control LSI for color video cameras.

When used in combination with a synchronizing signal generator (MN67601NS or MN67602PS), it provides external synchronization control for NTSC and PAL video systems.

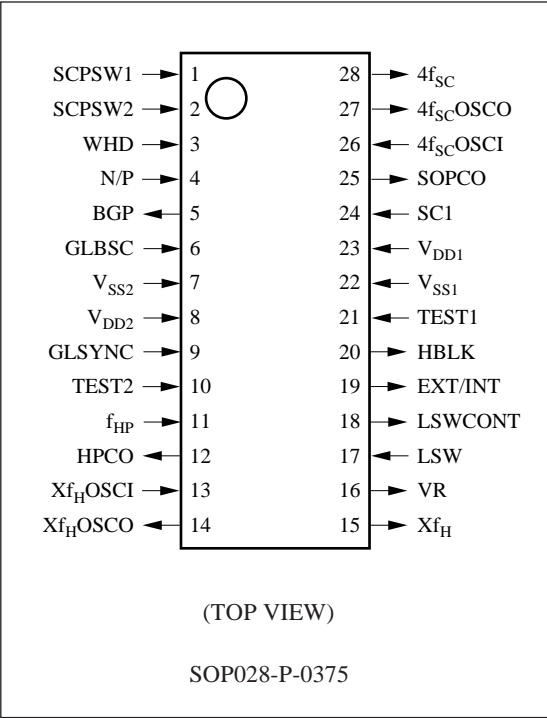
■ Features

- Synchronization of both the video camera and the VCR
- External synchronization inputs:
 - Composite synchronizing signal and burst subcarrier
- External synchronization techniques
 - Horizontal synchronization: phase-locked loop
 - Vertical synchronization: reset technique
 - Subcarrier synchronization: phase-locked loop
- Support for both NTSC and PAL systems
- Built-in feature for automatically switching between external and internal synchronization
- Built-in horizontal phase adjustment circuit

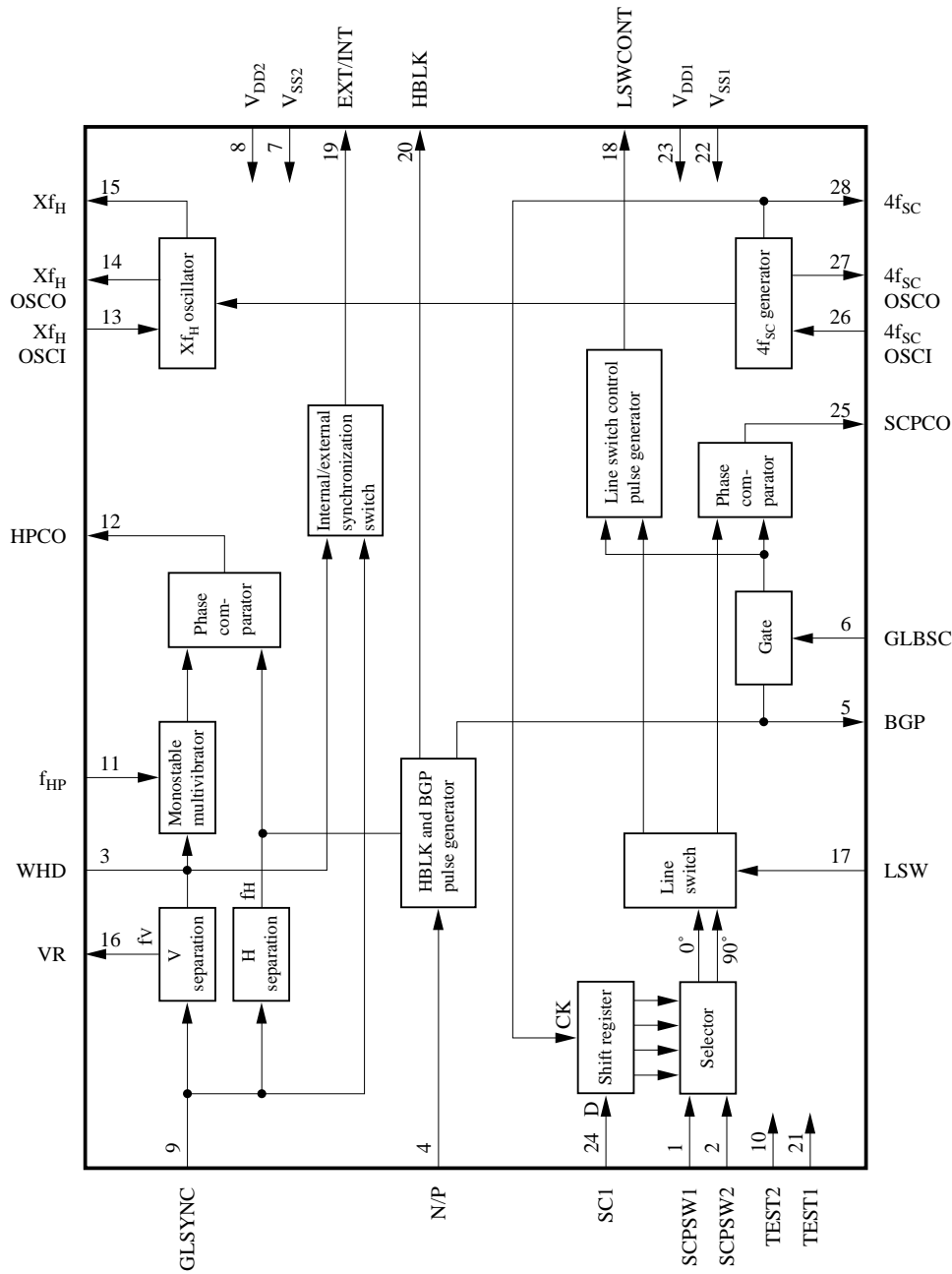
■ Applications

- Color video cameras

■ Pin Assignment



■ Block Diagram



■ Pin Descriptions

| Pin No. | Symbol | Pin Name | Function Description |
|---------|------------------|--|--|
| 23 | V_{DD1} | Power supply | "H" level (5V) power supply for subcarrier circuits |
| 22 | V_{SS1} | Power supply | "L" level (GND) power supply for subcarrier circuits |
| 8 | V_{DD2} | Power supply | "H" level (5V) power supply for synchronizing signal circuits |
| 7 | V_{SS2} | Power supply | "L" level (GND) power supply for synchronizing signal circuits |
| 9 | GLSYNC | External synchronizing signal input | Input pin for composite synchronizing signal derived from video signal (reference for horizontal and vertical signals) |
| 6 | CLBSC | External burst subcarrier input | Input pin for burst subcarrier signal derived from video signal (reference for subcarrier signals) |
| 3 | WHD | Horizontal synchronization input | Input pin for WHD signal from synchronizing signal generator |
| 11 | f_{HP} | Monostable multi-vibrator input | Pin for connecting CR circuit for adjusting delay for analog monostable multivibrator (thus adjusting horizontal phase) |
| 24 | SC1 | Subcarrier input | Input pin for SC1 signal from synchronizing signal generator |
| 1 2 | SCPSW1 SCPSW2 | Subcarrier phase switch inputs | Pin selecting which of the four phase signals generated from the SC1 signal goes to the phase comparator |
| 17 | LSW | Line switch input | For a PAL system, supply the LSW signal from the synchronizing signal generator. For an NTSC system, keep this pin at "H" level. |
| 4 | N/P | NTSC/PAL selection input | "H" level selects NTSC operation; "L" level, PAL operation. |
| 12 | HPCO | Horizontal phase comparator output | This pin is at "L" level when the WHD signal, after passing through the monostable multivibrator, leads the rising edge of the HSYNC signal derived by separating off the horizontal component of the GLSYNC signal and is at "H" level when the signal lags. At all other times, it is in the high-impedance state. |
| 13 | Xf_H OSCI | Oscillator input for the synchronization circuits | Clock oscillator pins for the synchronization circuits. Connect these pins to an inductor, capacitor, and variable capacitor. (The pins have built-in feedback resistors.) |
| 14 | Xf_H OSCO | Oscillator output for the synchronization circuits | The circuit oscillates during external synchronization mode. The oscillation stops for internal synchronization mode. The oscillator frequency, Xf_H is 14.31818 MHz ($910f_H$) for NTSC and 4.406 MHz ($282f_H$) for PAL. |
| 15 | Xf_H | Clock output for synchronizing signal circuits | Clock output pin for synchronizing signal circuits. This pin provides the clock (Xf_H) for the external synchronization mode and stays at "L" level for the internal synchronization mode. Connect to the EX910 f_H I pin of the synchronizing signal generator for NTSC operation and to the EX282 f_H I pin for PAL operation. |

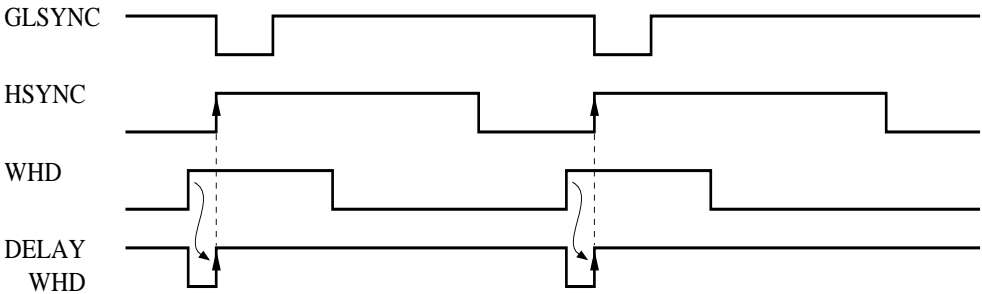
■ Pin Descriptions (continued)

| Pin No. | Symbol | Pin Name | Function Description |
|----------|-----------------------|--|---|
| 16 | VR | Vertical reset output | This pin generates a vertical reset pulse for the V-SERATION interval detected in the GLSYNC signal. Connect it to the VR pin of the synchronizing signal generator. |
| 25 | SCPCO | Subcarrier phase comparator output | This pin is at "L" level when the SC1 signal leads the GLBSC signal and is at "H" level when the signal lags. At all other times, it is in the high-impedance state. |
| 26 | 4f _{SC} OSCI | Oscillator input for subcarrier circuits | Clock oscillator pins for the subcarrier circuits. Connect these pins to a crystal oscillator, capacitor, and variable capacitor. (The pins have built-in feedback resistors.) The circuit oscillates during external synchronization mode. The oscillation stops for internal synchronization mode. The oscillator frequency, 4f _{SC} , is 14.31818 MHz for NTSC and 14.734 MHz for PAL. |
| 27 | 4f _{SC} OSCO | Oscillator output for subcarrier circuits | |
| 28 | 4f _{SC} | Subcarrier clock output | Clock output from subcarrier circuits. In external synchronization mode, this pin provides the (4f _{SC}) clock signal; in internal synchronization mode, it remains at "L" level. Connect this pin to the EX4f _{SC} I pin on the synchronizing signal generator. |
| 18 | LSWCONT | Line switch polarity control output | During PAL operation, this pin emits an error detection pulse if the LSW polarity is wrong, and the chip reverses the LSW polarity. During internal synchronization mode, this pin remains at "L" level. Connect this pin to the LSWCONT pin on the synchronizing signal generator. |
| 19 | EXT/INT | Automatic internal/external switching output | If the chip detects GLSYNC input, it switches to external synchronization mode and drives this pin at "H" level. Otherwise, it switches to internal synchronization mode and drives this pin at "L" level. Connect this pin to the EXT/INT pin on the synchronizing signal generator. |
| 5 | BGP | Burst gate pulse output | These pulses have a width of 2.5 μs (NTSC) or 2.3 μs (PAL) and trail the rising edge of the HSYNC signal by 5.3 μs (NTSC) or 5.6 μs. They are generated for only 10 H to 256 H (NTSC) or 304 H (PAL) after the VR pulse. |
| 20 | HBLK | Horizontal blanking output | These pulses have a width of 8.9 μs (NTSC) or 8.8 μs (PAL) and follow the rising edge of the HSYNC signal. |
| 21 10 | TEST1 TEST2 | Test inputs | Leave these test inputs open. (The pins include built-in pull-up resistors.) |

■ Timing Chart

1. Horizontal synchronization block

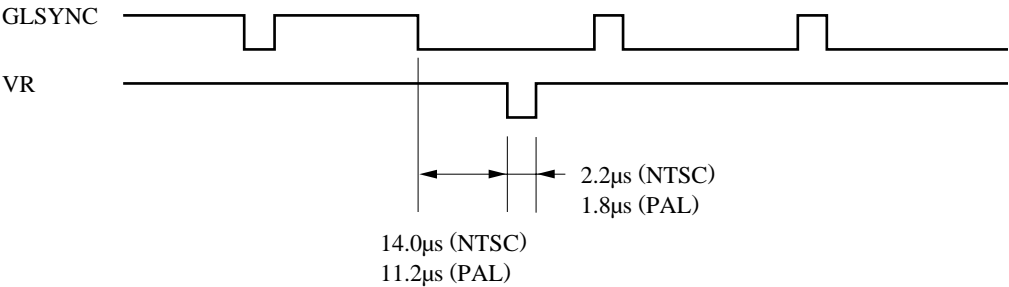
This block compares the phases of the HSYNC signal derived by separating off the horizontal component of the GLSYNC input and the WHD signal from the synchronizing signal generator after it has passed through the monostable multivibrator. It is thus possible to adjust the horizontal phase by adjusting the CR integral circuit's time constant.



Timing chart for horizontal pulse phase comparison

2. Vertical synchronization block

This block detects the V-SERATION interval in the GLSYNC input and generates a vertical reset (VR) pulse with 0.5 H of the start of that interval. It then issues no pulses for 256 H (NTSC) or 304 H (PAL) after this VR pulse.



Vertical reset pulse timing chart

3. Subcarrier synchronization block

This block converts the SC1 output from the synchronizing signal generator into four signals with the same frequency as the burst subcarrier, but different phases. In this phase-locked loop circuit, the phase of GLBSC is compared with the phase selected by 2 bits (SCPSW1 and SCPSW2).

During PAL operation, if the LSW polarity is wrong, this block sends an error detection pulse (LSWCONT) to the synchronizing signal generator and reverses the LSW polarity. It also adjusts the relationship between fields 1 through 4.

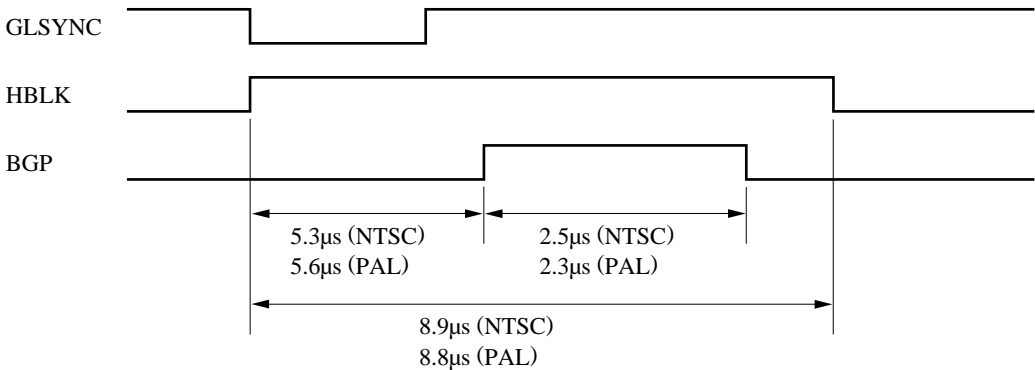
4. Oscillator blocks

The Xf_H and $4f_{SC}$ oscillator blocks operate only during external synchronization mode. Connecting a variable capacitor creates voltage-controlled oscillators that generate the synchronization signal circuit clock (Xf_H) and subcarrier circuit clock ($4f_{SC}$) for output to the synchronization signal generator.

5. Automatic internal/external switching block

If it detects a minimum of ten edges from the GLSYNC input, this block switches the chip to the external synchronization mode and drives the EXT/INT pin at "H" level. If there are no edges in the GLSYNC input for 10 H, this block switches the chip to the internal synchronization mode and drives this pin at "L" level.

HBLK and BGP plus generator

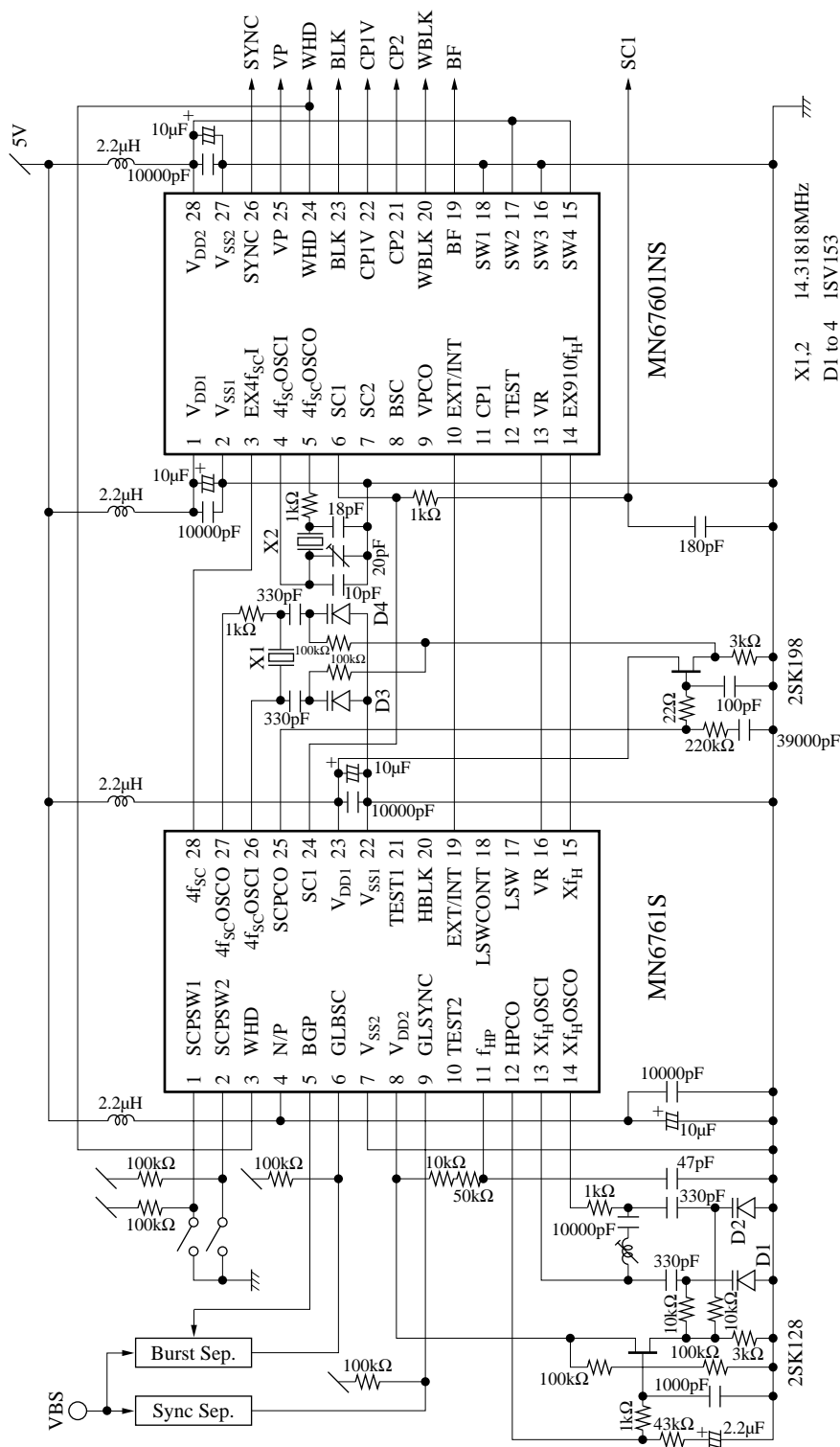


HBLK and BGP pulse timing chart

There is an HBLK pulse for each H.

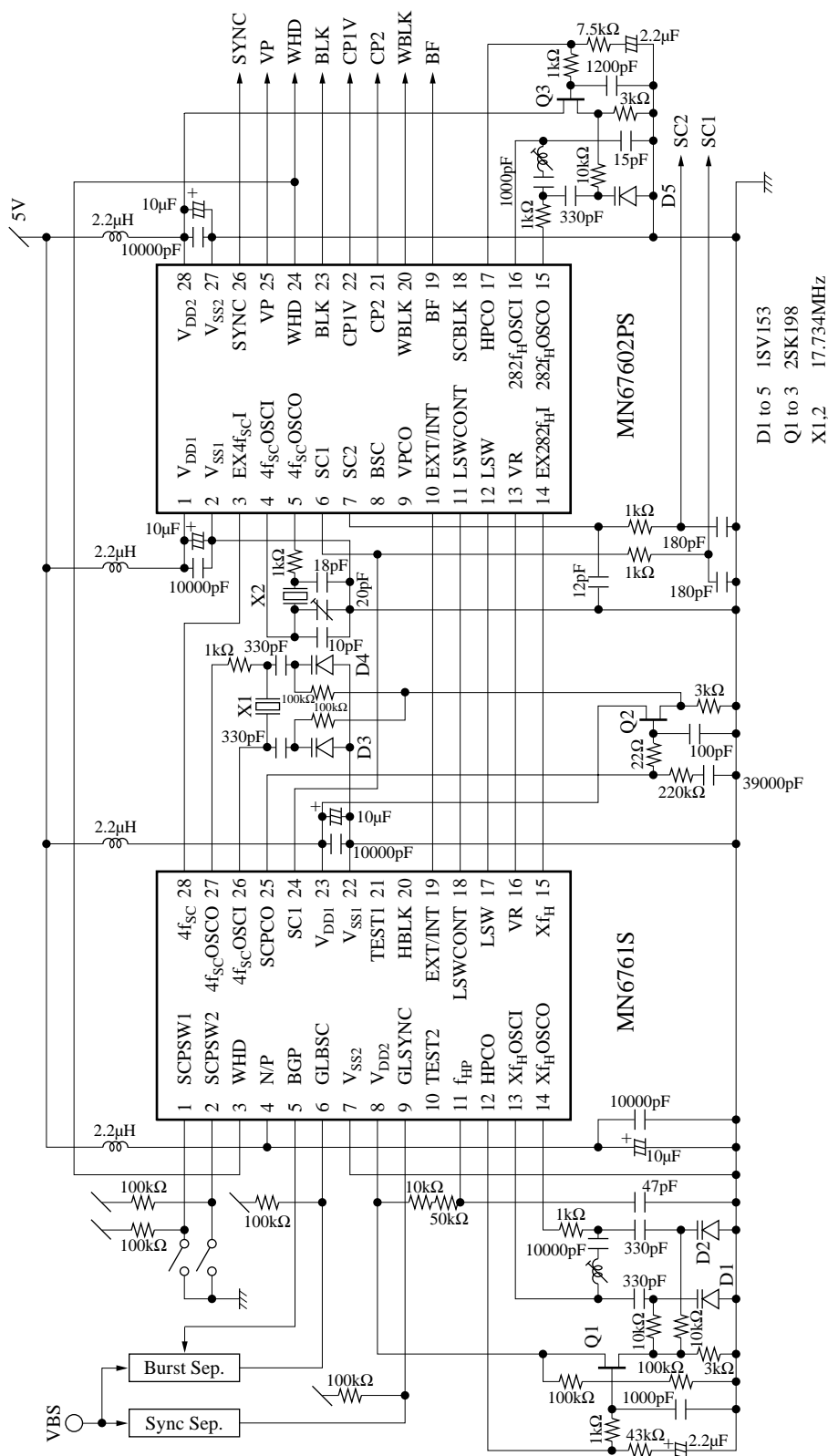
BGP pulses are generated for only 10 H to 256 H (NTSC) or 304 H (PAL) after the VR pulse.

1. External synchronization for NTSC system



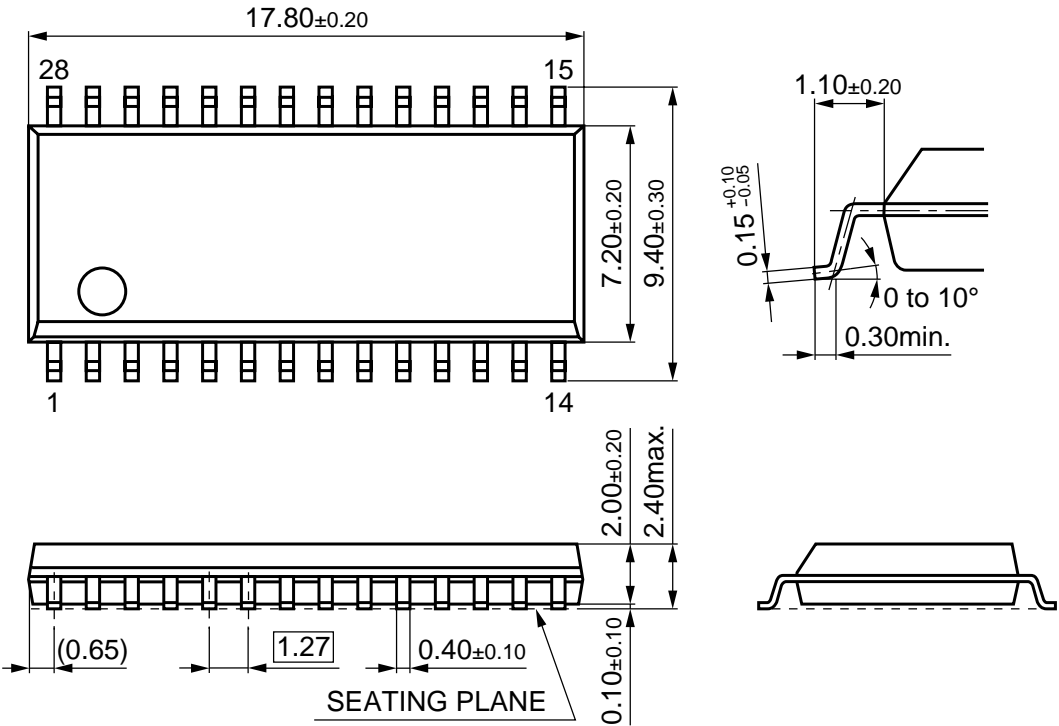
■ Application Circuit Example

2. External synchronization for PAL system



■ Package Dimensions (Unit: mm)

SOP028-P-0375



Request for your special attention and precautions in using the technical information and semiconductors described in this material

- (1) An export permit needs to be obtained from the competent authorities of the Japanese Government if any of the products or technologies described in this material and controlled under the "Foreign Exchange and Foreign Trade Law" is to be exported or taken out of Japan.
- (2) The technical information described in this material is limited to showing representative characteristics and applied circuit examples of the products. It does not constitute the warranting of industrial property, the granting of relative rights, or the granting of any license.
- (3) The products described in this material are intended to be used for standard applications or general electronic equipment (such as office equipment, communications equipment, measuring instruments and household appliances).
Consult our sales staff in advance for information on the following applications:
 - Special applications (such as for airplanes, aerospace, automobiles, traffic control equipment, combustion equipment, life support systems and safety devices) in which exceptional quality and reliability are required, or if the failure or malfunction of the products may directly jeopardize life or harm the human body.
 - Any applications other than the standard applications intended.
- (4) The products and product specifications described in this material are subject to change without notice for reasons of modification and/or improvement. At the final stage of your design, purchasing, or use of the products, therefore, ask for the most up-to-date Product Standards in advance to make sure that the latest specifications satisfy your requirements.
- (5) When designing your equipment, comply with the guaranteed values, in particular those of maximum rating, the range of operating power supply voltage and heat radiation characteristics. Otherwise, we will not be liable for any defect which may arise later in your equipment.
Even when the products are used within the guaranteed values, redundant design is recommended, so that such equipment may not violate relevant laws or regulations because of the function of our products.
- (6) When using products for which dry packing is required, observe the conditions (including shelf life and after-unpacking standby time) agreed upon when specification sheets are individually exchanged.
- (7) No part of this material may be reprinted or reproduced by any means without written permission from our company.

Please read the following notes before using the datasheets

- A. These materials are intended as a reference to assist customers with the selection of Panasonic semiconductor products best suited to their applications.
Due to modification or other reasons, any information contained in this material, such as available product types, technical data, and so on, is subject to change without notice.
Customers are advised to contact our semiconductor sales office and obtain the latest information before starting precise technical research and/or purchasing activities.
- B. Panasonic is endeavoring to continually improve the quality and reliability of these materials but there is always the possibility that further rectifications will be required in the future. Therefore, Panasonic will not assume any liability for any damages arising from any errors etc. that may appear in this material.
- C. These materials are solely intended for a customer's individual use.
Therefore, without the prior written approval of Panasonic, any other use such as reproducing, selling, or distributing this material to a third party, via the Internet or in any other way, is prohibited.