

## CMOS CURRENT MODE PWM CONTROLLER

### FEATURES

- Low Supply Current With CMOS Technology ..... 3.8mA Max
- Internal Reference ..... 5.1V
- Fast Rise/Fall Times ( $C_L = 1000\text{pF}$ ) ..... 50nsec
- Dual Push-Pull Outputs
- Direct-Power MOSFET Drive
- High Totem-Pole Output Drive ..... 300mA
- Differential Current-Sense Amplifier
- Programmable Current Limit
- Soft-Start Operation
- Double-Pulse Suppression
- Undervoltage Lockout
- Wide Supply Voltage Operation ..... 8V to 16V
- High Frequency Operation ..... 200kHz
- Available with Low OFF State Outputs
- Low Power, Pin-Compatible Replacement for UC3846

### ORDERING INFORMATION

Part No.	Package	Temperature Range
TC170COE	16-Pin SOIC (Wide)	0°C to +70°C
TC170CPE	16-Pin PDIP (Narrow)	0°C to +70°C

### GENERAL DESCRIPTION

The TC170 brings low-power CMOS technology to the current-mode-switching power supply controller market. Maximum supply current is 3.8 mA. Bipolar current-mode control integrated circuits require five times more operating current.

The dual totem-pole CMOS outputs drive power MOSFETs or bipolar transistors. The 50nsec typical output rise and fall times (1000pF capacitive loads) minimize MOSFET power dissipation. Output peak current is 300mA.

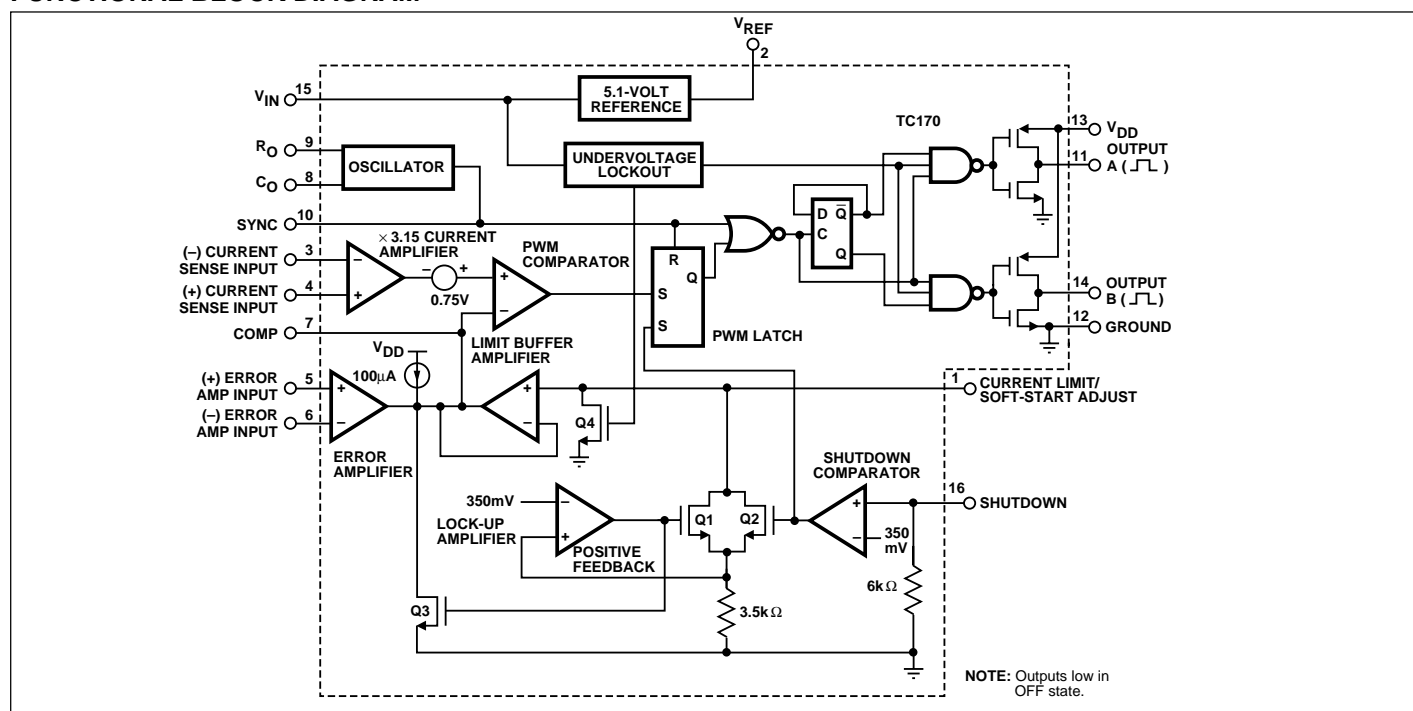
The TC170 contains a full array of system-protection circuits (see features).

Current-mode control lets users parallel power supply modules. Two or more TC170 controllers can be slaved together for parallel operation. Circuits can operate from a master TC170 internal oscillator or an external system oscillator.

The TC170 operates from an 8V to 16V power supply. An internal 2%, 5.1V reference minimizes external component count. The TC170 is pin compatible with the Unitrode UC1846/2846/3846 bipolar controller.

Other advantages inherent in current-mode control include superior line and load regulation and automatic symmetry correction in push-pull converters.

### FUNCTIONAL BLOCK DIAGRAM



# CMOS CURRENT MODE PWM CONTROLLER

## TC170

### ABSOLUTE MAXIMUM RATINGS\*

Supply Voltage .....	18V
Output Voltage .....	$V_{DD}$ or 18V
Analog Inputs .....	$-0.3V$ to $V_S + 0.3V$
Storage Temperature Range .....	$-65^{\circ}C$ to $+150^{\circ}C$
Lead Temperature (Soldering, 10 sec) .....	$+300^{\circ}C$
Maximum Chip Temperature .....	$150^{\circ}C$
Plastic Package Thermal Resistance:	
SOIC (Wide)	
$\theta_{JA}$ (Junction to Ambient) .....	$105^{\circ}C/W$
$\theta_{JC}$ (Junction to Case) .....	$23^{\circ}C/W$

PDIP (Narrow)	
$\theta_{JA}$ (Junction to Ambient) .....	$95^{\circ}C/W$
$\theta_{JC}$ (Junction to Case) .....	$55^{\circ}C/W$
Operating Temperature Range	
Commercial .....	$0^{\circ}C$ to $+70^{\circ}C$

\*Static-sensitive device. Unused devices must be stored in conductive material. Protect devices from static discharge and static fields. Stresses above those listed under Absolute Maximum Ratings may cause permanent damage to the device. These are stress ratings only and functional operation of the device at these or any other conditions above those indicated in the operational sections of the specifications is not implied. Exposure to Absolute Maximum Rating Conditions for extended periods may affect device reliability.

**ELECTRICAL CHARACTERISTICS:**  $V_{IN} = 16V$ ,  $R_O = 24k\Omega$ ,  $C_O = 1nF$ ,  $T_A = 25^{\circ}C$ , unless otherwise indicated.

Symbol	Parameter	Test Conditions	Min	Typ	Max	Unit
<b>Reference Voltage</b>						
$V_{REF}$	Output Voltage	$I_{OUT} = 1mA$	5	5.1	5.3	V
	Line Regulation	$V_{IN} = 8V$ to $16V$		5	15	mV
	Load Regulation	$I_{OUT} = 1mA$ to $10mA$		13	20	mV
$V_{RTC}$	Temperature Coefficient	Over Operating Temperature Range		0.4	0.5	mV/ $^{\circ}C$
<b>Oscillator</b>						
	Oscillator Frequency		35	42	46	kHz
	Voltage Stability	$V_{IN} = 8V$ to $16V$		1.1	1.5	%/V
	Temperature Stability	Over Operating Temperature Range		5	10	%
<b>Error Amplifier</b>						
$V_{OS}$	Input Offset Voltage				$\pm 30$	mV
$I_B$	Input Bias Current				$\pm 1$	nA
$V_{CMRR}$	Common-Mode Input Voltage	$V_{IN} = 8V$ to $16V$	0		$V_{DD} - 2V$	V
$A_{VOL}$	Open-Loop Voltage Gain	$V_{OUT} = 1V$ to $6V$	70			dB
BW	Unity Gain Bandwidth			1.2		MHz
CMRR	Common-Mode Rejection Ratio	$V_{CMV} = 0V$ to $14V$	60			dB
PSRR	Power Supply Rejection Ratio	$V_{IN} = 8V$ to $16V$	60			dB
<b>Current Sense Amplifier</b>						
	Amplifier Gain	Pin 3 = $0V$ to $1.1V$	3	3.15	3.3	V/V
	Maximum Differential Input Signal	$V_{PIN4} - V_{PIN3}$			$\leq 1.1$	V
	Common-Mode Input Voltage		0		$V_{DD} - 3V$	V
<b>Current Limit Adjust</b>						
	Current Limit Offset Voltage		0.5		1	V
$I_B$	Input Bias Current				1	nA
<b>Shutdown Terminal</b>						
$V_{TB}$	Threshold Voltage		0.3	0.35	0.4	V
$V_{IN}$	Input Voltage Range		0		$V_{DD}$	V
	Minimum Latching Current at Pin 1		125			$\mu A$
	Maximum Nonlatching Current at Pin 1				50	$\mu A$
<b>Output Stage</b>						
$V_{DD}$	Output Voltage	Pin 13	$V_{IN} - 0.5$	$V_{IN}$	$V_{IN} + 0.5$	V
$V_{OL}$	Output Low Level	$I_{SINK} = 20mA$			0.4	V
$V_{OL}$	Output Low Level	$I_{SINK} = 100mA$			2	V
$V_{OH}$	Output High Level	$I_{SOURCE} = 20mA$	$V_{DD} - 1V$			V

# CMOS CURRENT MODE PWM CONTROLLER

**TC170**

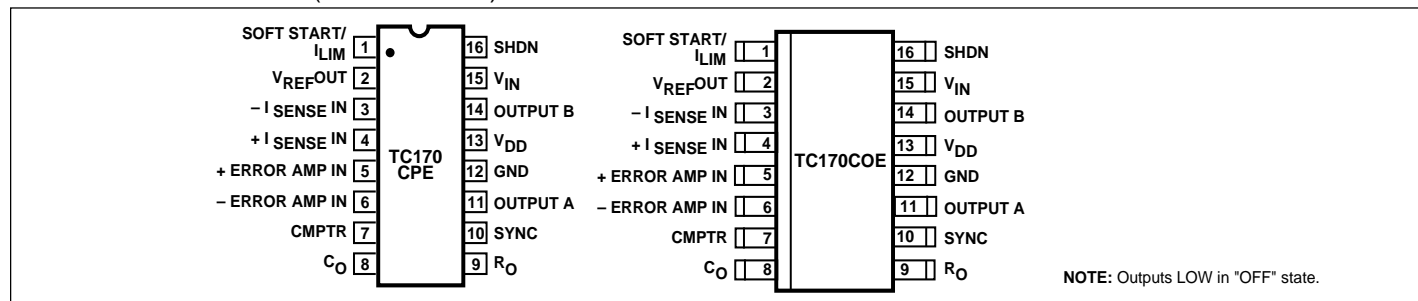
**ELECTRICAL CHARACTERISTICS:**  $V_{IN} = 16V$ ,  $R_O = 24k\Omega$ ,  $C_O = 1nF$ ,  $T_A = 25^\circ C$ , unless otherwise indicated.

Symbol	Parameter	Test Conditions	Min	Typ	Max	Unit
<b>Output Stage (Cont.)</b>						
$V_{OL}$	Output High Level	$I_{SOURCE} = 100mA$	$V_{DD} - 4V$			V
$t_R$	Output Rise Time	$C_L = 1000pF$		50	150	nsec
$t_F$	Output Fall Time	$C_L = 1000pF$		50	150	nsec
<b>Undervoltage Lockout</b>						
	Start-Up	Threshold	7.15	7.7	8.25	V
	Threshold Hysteresis		0.5	0.75	1	V
<b>Supply</b>						
$I_S$	Standby Supply Current			2.7	3.8	mA

## PIN DESCRIPTION

Pin No. (16-Pin Plastic DIP) Package	Symbol	Description
1	SOFT START/ $I_{LIM}$	Soft Start Adjust / Current Limit. For setting the peak current threshold of sense inputs (pins 3 and 4). Second function of this pin is Soft-Start Adjust.
2	$V_{REF}$ OUT	Reference supply output of 5.1 volts. It can supply a minimum of 10mA.
3	$-I_{SENSE}$ IN	$-$ Current Sense Input. Inverting input for sensing peak current of the pass transistor through series sense current monitor resistor.
4	$+I_{SENSE}$ IN	$+$ Current Sense Input. Non-inverting input used in conjunction with pin 3. This senses the positive end of current monitor resistor.
5	$+ERROR$ AMP IN	$+$ Error Amp In. Non-inverting input for output voltage regulation.
6	$-ERROR$ AMP IN	$-$ Error Amp In. Inverting input of the amplifier for the reference voltage.
7	CMPTR	For compensation of the feedback loop response.
8	$C_O$	Timing capacitor ( $C_O$ ) input to set oscillator frequency in conjunction with pin 9, $R_O$ , resistor input. Second function is for setting crossover dead time of pin 11 and 14 outputs.
9	$R_O$	Timing resistor ( $R_O$ ) input to set oscillator frequency by setting constant current charge rate to charge capacitor $C_O$ .
10	SYNC	For PWM controller oscillator synchronization of two or more controllers. Or as a clock input to sync oscillator from external signal.
11	OUTPUT A	A output drive of phase A from push pull transistors.
12	GND	Ground return for all input and output pins.
13	$V_{DD}$	Supplies power to operate the output drivers only.
14	OUTPUT B	Output of phase B from push pull transistors.
15	$V_{IN}$	Voltage bias supply for all TC170 circuits except the output transistors.
16	SHDN	Input pin to disable both output drives to 0V OFF.

## PIN CONFIGURATIONS (DIP and SOIC)



## TC170

### Peak Current Limit Setup

Resistors R1 and R2 at the current limit input (pin 1) set the TC170 peak current limit (Figure 1). The potential at pin 1 is easily calculated:

$$V1 = V_{REF} \frac{R2}{R1 + R2}$$

R1 should be selected first. The shutdown circuit feature is not latched for  $(V_{REF} - 0.35)/R1 < 50\mu A$  and is latched for currents greater than  $125\mu A$ .

The error amplifier output voltage is clamped from going above V1 through the limit buffer amplifier. Peak current is sensed by RS and amplified by the current amplifier which has a fixed gain of 3.15.

$I_{PCL}$ , the peak current limit, is the current that causes the PWM comparator noninverting input to exceed V1, the potential at the inverting input. Once the comparator trip point is exceeded, both outputs are disabled.

$I_{PCL}$  is easily calculated:

$$I_{PCL} = \frac{V1 - 0.75V}{3.15 (RS)}$$

where:

$$V1 = V_{REF} \frac{R2}{R1 + R2}$$

$V_{REF}$  = Internal voltage reference = 5.1V

3.15 = Gain of current-sense amplifier

0.75V = Current limit offset

Both driver outputs (pins 11 and 14) are OFF (LOW) when the peak current limit is exceeded. When the sensed current goes below  $I_{PCL}$ , the circuit operates normally.

### Output Shutdown

The TC170 outputs can be turned OFF quickly through the shutdown input (pin 16). A signal greater than 350 mV at pin 16 forces the shutdown comparator output HIGH. The PWM latch is held set, disabling the outputs.

Q2 is also turned ON. If  $V_{REF}/R1$  is greater than  $125\mu A$ , positive feedback through the lockup amplifier and Q1 keeps the inverting PWM comparator inverting input below 0.75V. Q3 remains ON even after the shutdown input signal is removed, because of the positive feedback. The state can be cleared only through a power-up cycle. Outputs will be disabled whenever the potential at pin 1 is below 0.75V.

The shutdown terminal gives a fast, direct way to disable the TC170 output transistors. System protection and remote shutdown applications are possible.

The input pulse to pin 16 should be at least 500nsec wide and have an amplitude of at least 1V in order to get the minimum propagation delay from input to output. If these parameters are met, the delay should be less than 600nsec at 25°C; however, the delay time will increase as the device temperature rises.

### Soft Restart From Shutdown

A soft restart can be programmed if nonlatched shutdown operation is used.

A capacitor at pin 1 will cause a gradual increase in potential toward V1. When the voltage at pin 1 reaches 0.75V, the PWM latch set input is removed and the circuit establishes a regulated output voltage. The soft-start operation forces the PWM output drivers to initially operate with minimum duty cycle and low peak currents.

Even if a soft start is not required, it is necessary to insert a capacitor between pin 1 and ground if the current  $I_L$  is greater than  $125\mu A$ . This capacitor will prevent "noise triggering" of the latch, yet minimize the soft-start effect.

### Soft-Start Power-Up

During power-up, a capacitor at R1, R2 initiates a soft-start cycle. As the input voltage (pin 15) exceeds the undervoltage lockout potential (7.7V), Q4 is turned OFF, ending undervoltage lockout. Whenever the PWM comparator inverting input is below 0.5V, both outputs are disabled.

When the undervoltage lockout level is passed, the capacitor begins to charge. The PWM duty cycle increases until the operating output voltage is reached. Soft-start operation forces the PWM output drivers to initially operate with minimum duty cycle and low peak current.

### Current-Sense Amplifier

The current-sense amplifier operates at a fixed gain of 3.15. Maximum differential input voltage ( $V_{PIN4} - V_{PIN3}$ ) is 1.1V. Common-mode input voltage range is 0V to  $V_{IN} - 3V$ .

Resistive-sensing methods are shown in Figure 2. In Figure 2(A), a simple RC filter limits transient voltage spikes at pin 4, caused by external output transistor-collector capacitance. Transformer coupling (Figure 3) offers isolation and better power efficiency, but cost and complexity increase.

In order to minimize the propagation delay from the input to the current amplifier to the output terminals, the current ramp should be in the order of 1μsec in width (min). Typical time delay values are in the 300 to 400nsec region at 25°C. The delay time increases with device temperature so that at 50°C, the delay times may be increased by as much as 100nsec.

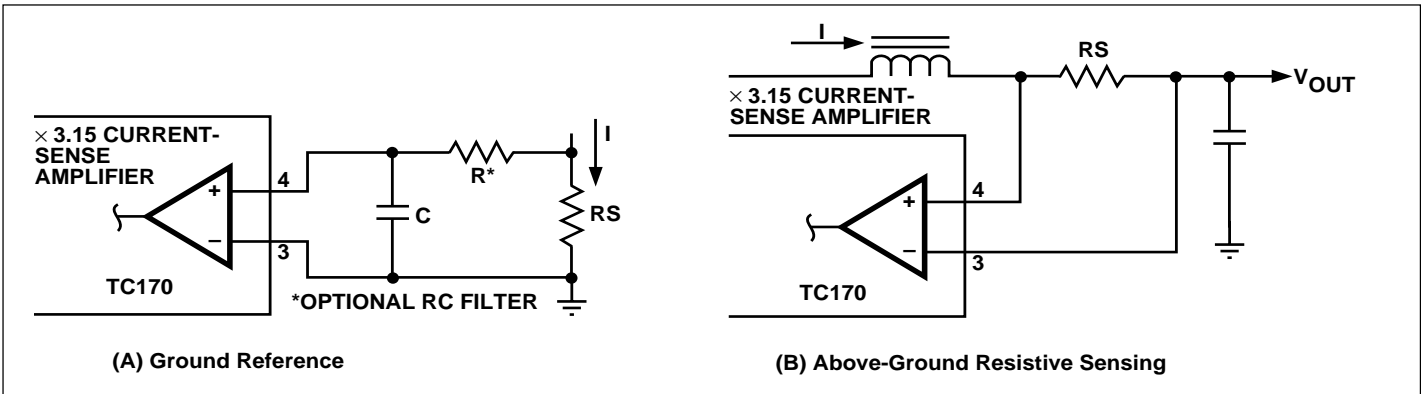
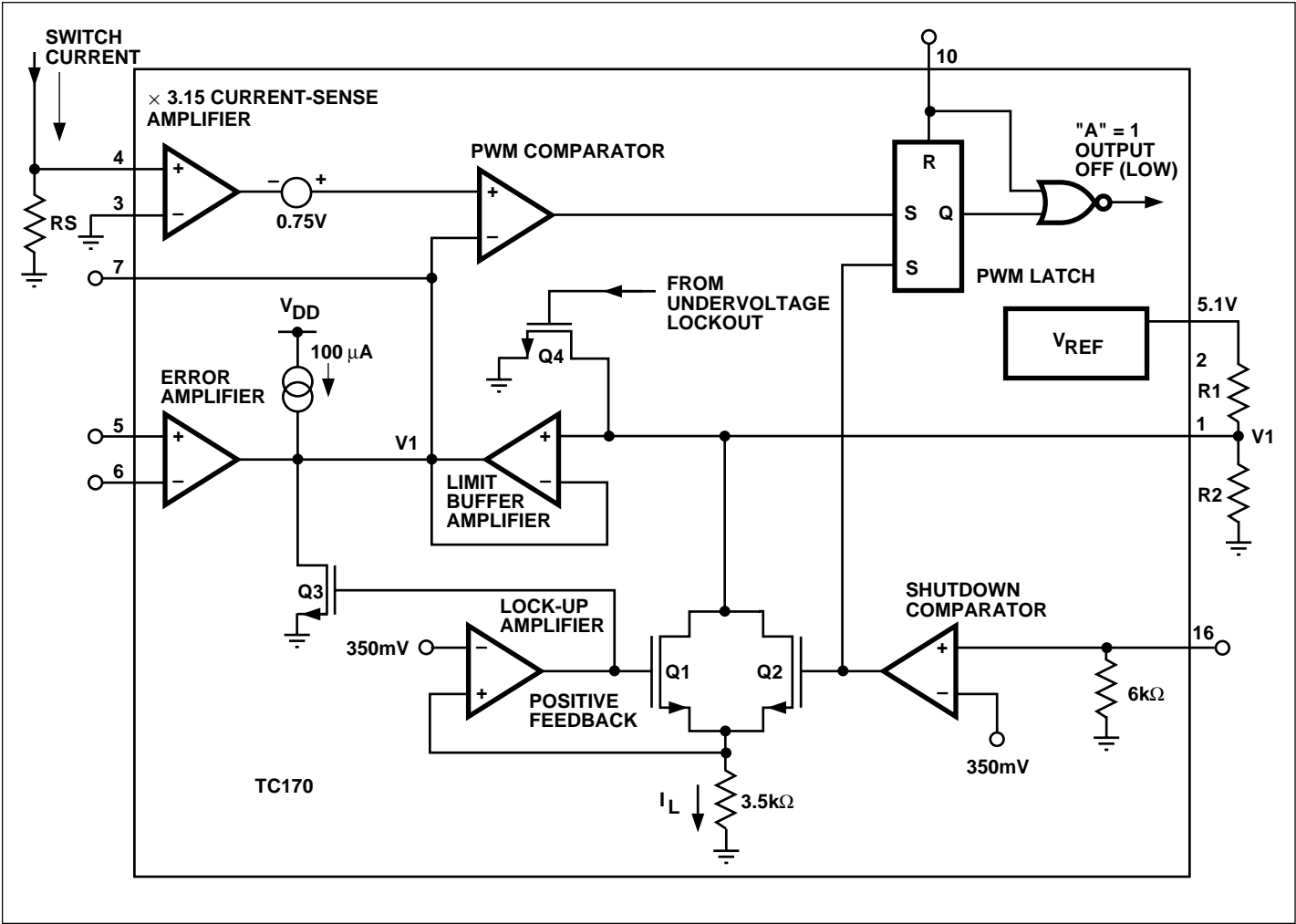


Figure 2. Resistive Sensing

## TC170

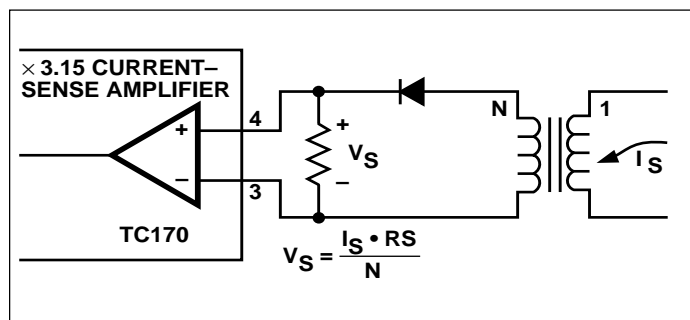


Figure 3 Transformer Isolated Current Sense

## Undervoltage Lockout

The undervoltage lockout circuit forces the TC170 outputs OFF (low) if the supply voltage is below 7.7V. Threshold hysteresis is 0.75V and guarantees clean, jitter-free turn-on and turnoff points. The hysteresis also reduces capacitive filtering requirements at the PWM controller supply input (pin 15).

## Circuit Synchronization

Current-mode-controlled power supplies can be operated in parallel with a common load. Paralleled converters will equally share the load current. Voltage-mode controllers unequally share the load current, decreasing system reliability.

Two or more TC170 controllers can be slaved together for parallel operation. Circuits can operate from a master TC170 internal oscillator with an external driver (Figure 4). Devices can also be slaved to an external oscillator (Figure 5). Disable internal slave device oscillators by grounding pin 8. Slave controllers derive an oscillator from the bidirectional synchronization output signal at pin 10.

Pin 10 is bidirectional in that it is intended to be both a sync output and input. This is accomplished by making the output driver "weak." This is advantageous in that it eliminates an additional pin from the package but does not enable the device to directly drive another device. In order to make it an effective driver, a buffer is required (Figure 4). In order to use pin 10 as a sync input, it is necessary to overcome the internal driver. This requires a pulse with an amplitude equal to  $V_{IN}$ . Since  $V_{IN}$  must be above 8.25V for the undervoltage lockout to be disabled, a CMOS or open-collector TTL driver should be used.

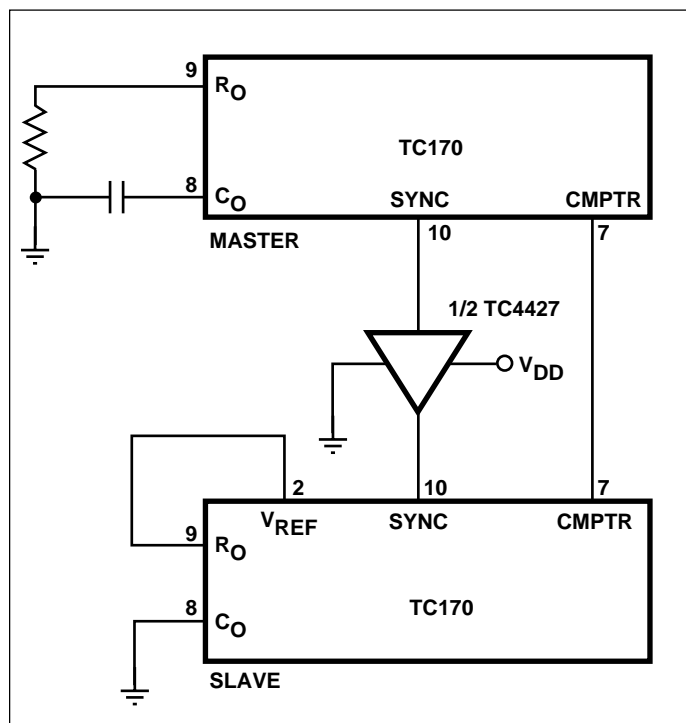


Figure 4. Master/Slave Parallel Operation

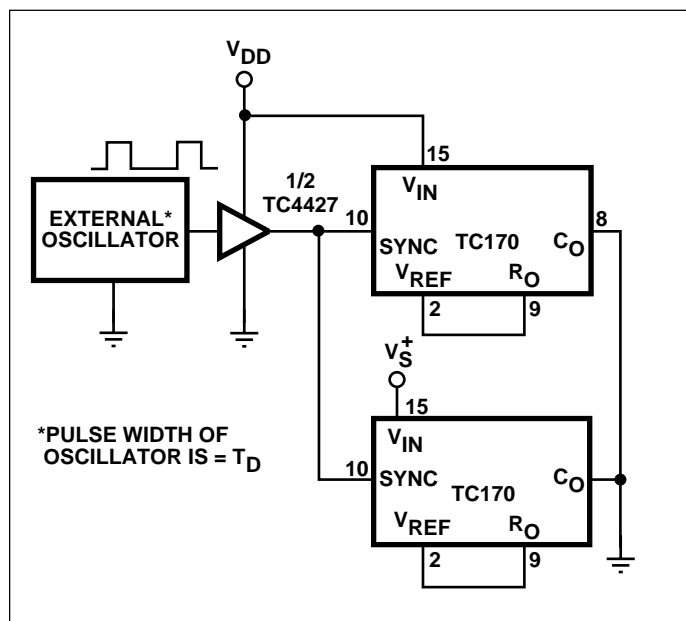


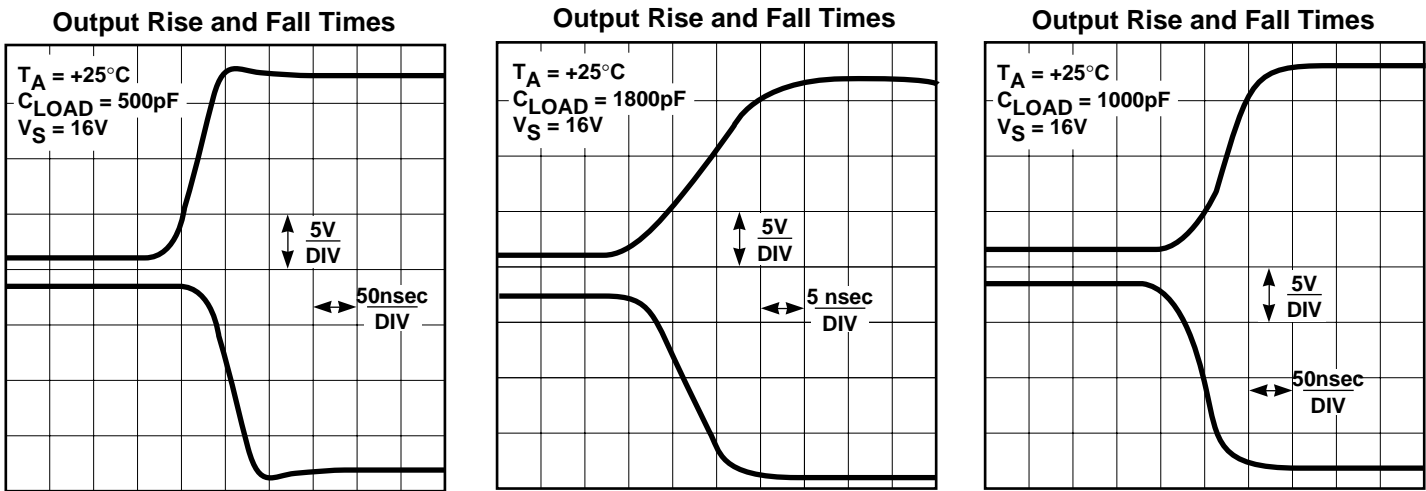
Figure 5. External Clock Synchronization



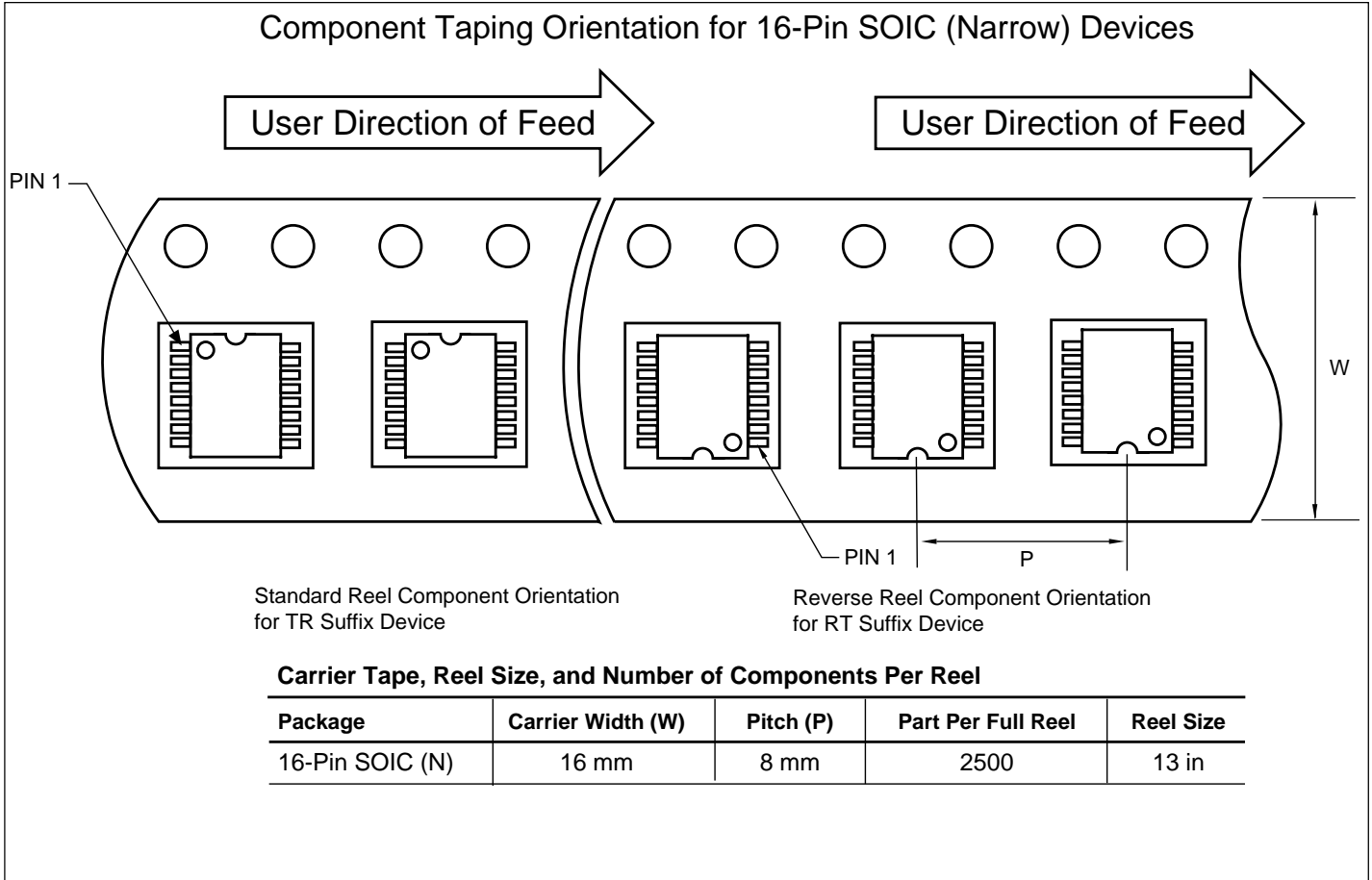
## TC170-5 10/7/99

TC170

TYPICAL CHARACTERISTICS

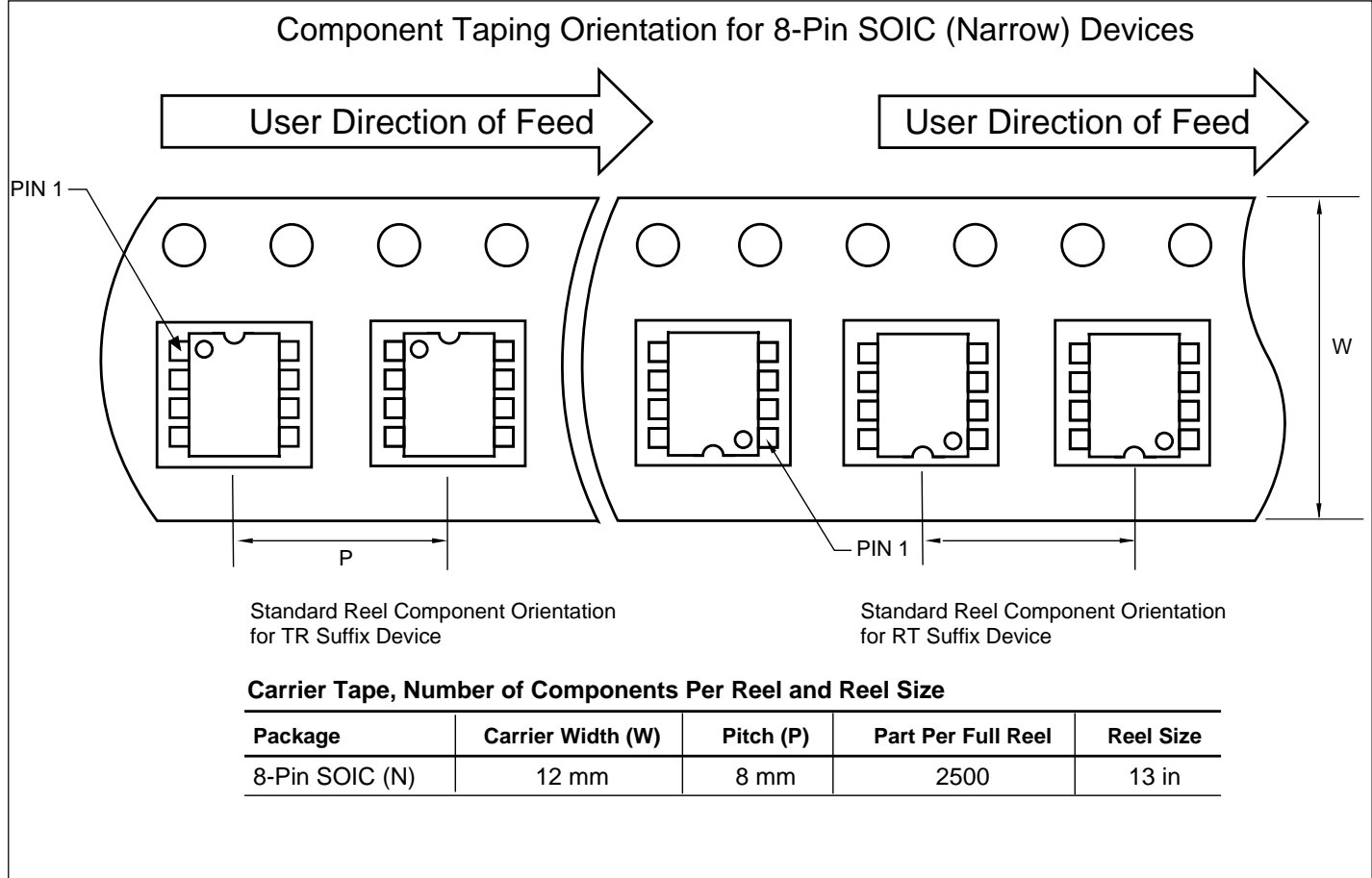


TAPING FORM





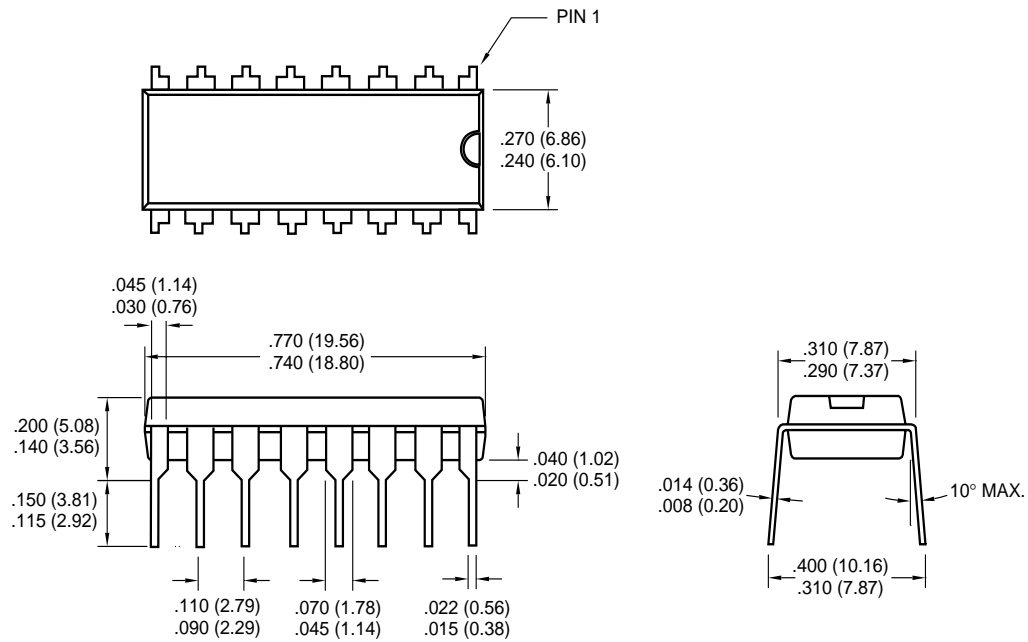
TAPING FORM



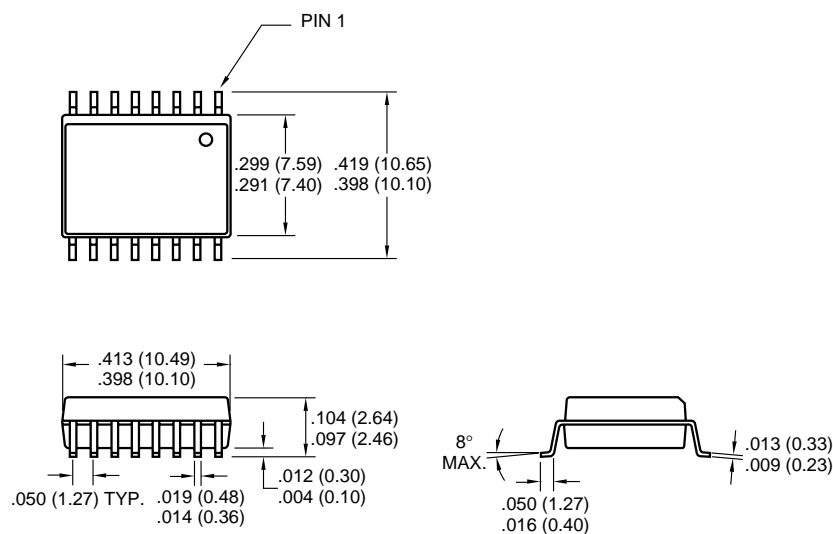
## TC170

### PACKAGE DIMENSIONS

16-Pin PDIP (Narrow)



16-Pin SOIC (Wide)



Dimensions: inches (mm)



## WORLDWIDE SALES AND SERVICE

### AMERICAS

#### Corporate Office

2355 West Chandler Blvd.  
Chandler, AZ 85224-6199  
Tel: 480-792-7200 Fax: 480-792-7277  
Technical Support: 480-792-7627  
Web Address: <http://www.microchip.com>

#### Rocky Mountain

2355 West Chandler Blvd.  
Chandler, AZ 85224-6199  
Tel: 480-792-7966 Fax: 480-792-7456

#### Atlanta

500 Sugar Mill Road, Suite 200B  
Atlanta, GA 30350  
Tel: 770-640-0034 Fax: 770-640-0307

#### Austin

Analog Product Sales  
8303 MoPac Expressway North  
Suite A-201  
Austin, TX 78759  
Tel: 512-345-2030 Fax: 512-345-6085

#### Boston

2 Lan Drive, Suite 120  
Westford, MA 01886  
Tel: 978-692-3848 Fax: 978-692-3821

#### Boston

Analog Product Sales  
Unit A-8-1 Millbrook Tarry Condominium  
97 Lowell Road  
Concord, MA 01742  
Tel: 978-371-6400 Fax: 978-371-0050

#### Chicago

333 Pierce Road, Suite 180  
Itasca, IL 60143  
Tel: 630-285-0071 Fax: 630-285-0075

#### Dallas

4570 Westgrove Drive, Suite 160  
Addison, TX 75001  
Tel: 972-818-7423 Fax: 972-818-2924

#### Dayton

Two Prestige Place, Suite 130  
Miamisburg, OH 45342  
Tel: 937-291-1654 Fax: 937-291-9175

#### Detroit

Tri-Atria Office Building  
32255 Northwestern Highway, Suite 190  
Farmington Hills, MI 48334  
Tel: 248-538-2250 Fax: 248-538-2260

#### Los Angeles

18201 Von Karman, Suite 1090  
Irvine, CA 92612  
Tel: 949-263-1888 Fax: 949-263-1338

#### Mountain View

Analog Product Sales  
1300 Terra Bella Avenue  
Mountain View, CA 94043-1836  
Tel: 650-968-9241 Fax: 650-967-1590

#### New York

150 Motor Parkway, Suite 202  
Hauppauge, NY 11788  
Tel: 631-273-5305 Fax: 631-273-5335

#### San Jose

Microchip Technology Inc.  
2107 North First Street, Suite 590  
San Jose, CA 95131  
Tel: 408-436-7950 Fax: 408-436-7955

#### Toronto

6285 Northam Drive, Suite 108  
Mississauga, Ontario L4V 1X5, Canada  
Tel: 905-673-0699 Fax: 905-673-6509

### ASIA/PACIFIC

#### China - Beijing

Microchip Technology Beijing Office  
Unit 915  
New China Hong Kong Manhattan Bldg.  
No. 6 Chaoyangmen Beidajie  
Beijing, 100027, No. China  
Tel: 86-10-85282100 Fax: 86-10-85282104

#### China - Shanghai

Microchip Technology Shanghai Office  
Room 701, Bldg. B  
Far East International Plaza  
No. 317 Xian Xia Road  
Shanghai, 200051  
Tel: 86-21-6275-5700 Fax: 86-21-6275-5060

#### Hong Kong

Microchip Asia Pacific  
RM 2101, Tower 2, Metroplaza  
223 Hing Fong Road  
Kwai Fong, N.T., Hong Kong  
Tel: 852-2401-1200 Fax: 852-2401-3431

#### India

Microchip Technology Inc.  
India Liaison Office  
Divyasree Chambers  
1 Floor, Wing A (A3/A4)  
No. 11, OisShaughnessey Road  
Bangalore, 560 025, India  
Tel: 91-80-2290061 Fax: 91-80-2290062

#### Japan

Microchip Technology Intl. Inc.  
Benex S-1 6F  
3-18-20, Shinyokohama  
Kohoku-Ku, Yokohama-shi  
Kanagawa, 222-0033, Japan  
Tel: 81-45-471-6166 Fax: 81-45-471-6122

#### Korea

Microchip Technology Korea  
168-1, Youngbo Bldg. 3 Floor  
Samsung-Dong, Kangnam-Ku  
Seoul, Korea  
Tel: 82-2-554-7200 Fax: 82-2-558-5934

### ASIA/PACIFIC (continued)

#### Singapore

Microchip Technology Singapore Pte Ltd.  
200 Middle Road  
#07-02 Prime Centre  
Singapore, 188980  
Tel: 65-334-8870 Fax: 65-334-8850

#### Taiwan

Microchip Technology Taiwan  
11F-3, No. 207  
Tung Hua North Road  
Taipei, 105, Taiwan  
Tel: 886-2-2717-7175 Fax: 886-2-2545-0139

### EUROPE

#### Australia

Microchip Technology Australia Pty Ltd  
Suite 22, 41 Rawson Street  
Epping 2121, NSW  
Australia  
Tel: 61-2-9868-6733 Fax: 61-2-9868-6755

#### Denmark

Microchip Technology Denmark ApS  
Regus Business Centre  
Lautrup høj 1-3  
Ballerup DK-2750 Denmark  
Tel: 45 4420 9895 Fax: 45 4420 9910

#### France

Arizona Microchip Technology SARL  
Parc d'Activite du Moulin de Massy  
43 Rue du Saule Trapu  
Batiment A - 1er Etage  
91300 Massy, France  
Tel: 33-1-69-53-63-20 Fax: 33-1-69-30-90-79

#### Germany

Arizona Microchip Technology GmbH  
Gustav-Heinemann Ring 125  
D-81739 Munich, Germany  
Tel: 49-89-627-144 0 Fax: 49-89-627-144-44

#### Germany

Analog Product Sales  
Lochhamer Strasse 13  
D-82152 Martinsried, Germany  
Tel: 49-89-895650-0 Fax: 49-89-895650-22

#### Italy

Arizona Microchip Technology SRL  
Centro Direzionale Colleoni  
Palazzo Taurus 1 V. Le Colleoni 1  
20041 Agrate Brianza  
Milan, Italy  
Tel: 39-039-65791-1 Fax: 39-039-6899883

#### United Kingdom

Arizona Microchip Technology Ltd.  
505 Eskdale Road  
Winnesh Triangle  
Wokingham  
Berkshire, England RG41 5TU  
Tel: 44 118 921 5869 Fax: 44-118 921-5820

All rights reserved. © 2001 Microchip Technology Incorporated. Printed in the USA. 1/01  Printed on recycled paper.

01/09/01

Information contained in this publication regarding device applications and the like is intended through suggestion only and may be superseded by updates. It is your responsibility to ensure that your application meets with your specifications. No representation or warranty is given and no liability is assumed by Microchip Technology Incorporated with respect to the accuracy or use of such information, or infringement of patents or other intellectual property rights arising from such use or otherwise. Use of Microchip's products as critical components in life support systems is not authorized except with express written approval by Microchip. No licenses are conveyed, implicitly or otherwise, except as maybe explicitly expressed herein, under any intellectual property rights. The Microchip logo and name are registered trademarks of Microchip Technology Inc. in the U.S.A. and other countries. All rights reserved. All other trademarks mentioned herein are the property of their respective companies.