

4

3

2

1

THIS DRAWING IS UNPUBLISHED.

RELEASED FOR PUBLICATION

SEP. 2005

© COPYRIGHT 2005

ALL RIGHTS RESERVED.

LOC
E

DIST
B

REVISIONS

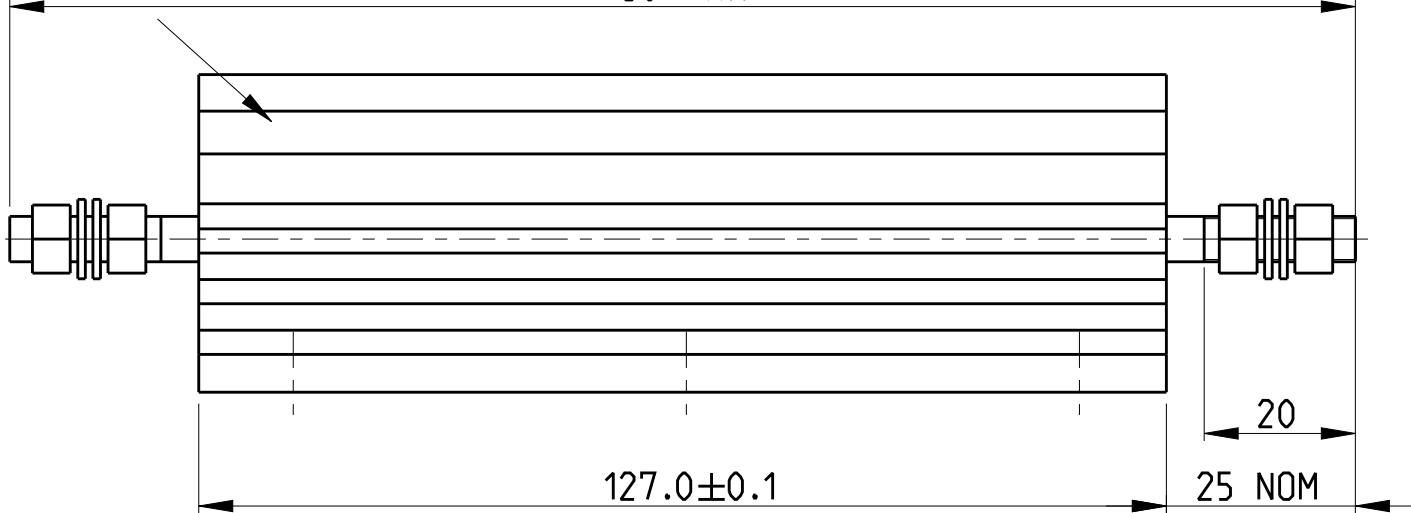
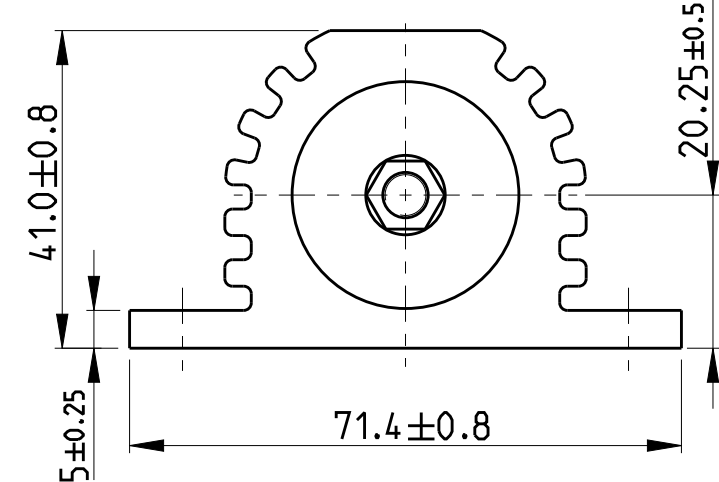
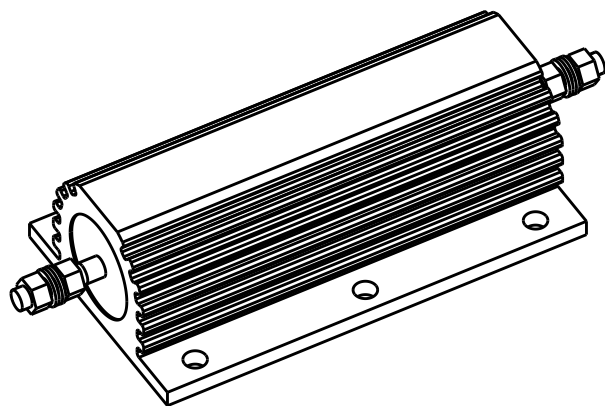
P	LTR	DESCRIPTION	DATE	DWN	APVD
	A2	ECR-11-020603	07AUG2012	KR	QP

M6 ST/STEEL TERMINAL STUDS.
EACH SUPPLIED WITH :
2 OFF M6 ST/STEEL FULL NUTS
2 OFF M6/STEEL PLAN WASHERS

- 1 FOR FURTHER INFORMATION SEE DATA SHEET FOR HS SERIES-ALUMINIUM HOUSED RESISTORS
- 2 FOR A SPECIFIC PN FOR A RESISTANCE VALUE AND TOLERANCE, PLEASE REFER TO DMF

GOLD ANODISED
ALUMINIUM HOUSINGS

RoHS Compliant



THIS DRAWING IS A CONTROLLED DOCUMENT.

DIMENSIONS:	TOLERANCES UNLESS OTHERWISE SPECIFIED:
mm	
	0 PLC ±0.5
	1 PLC ±0.2
	2 PLC ±0.1
	3 PLC ±
	4 PLC ±
	ANGLES ±5°
MATERIAL -	FINISH -

DWN	28.SEP.05
CHK	DAVE KENNEDY
	29.SEP.05
J CATCHPOLE	
APVD	29.SEP.05
J CATCHPOLE	
PRODUCT SPEC	
-	
APPLICATION SPEC	
-	
WEIGHT	-



TE Connectivity

NAME				HSC 300	
SIZE	CAGE CODE	DRAWING NO	RESTRICTED TO		
A3	00779	C-1630027	-		
CUSTOMER DRAWING			SCALE	SHEET	REV
			1:1	1 OF 1	A2